

Figure S1. The comparison between the widths of teeth 13 between the boys (group 1 – R-CLP, group 2 – L-CLP, group 3 – BCLP, group 4 – healthy individuals). Statistically significant values were presented in red

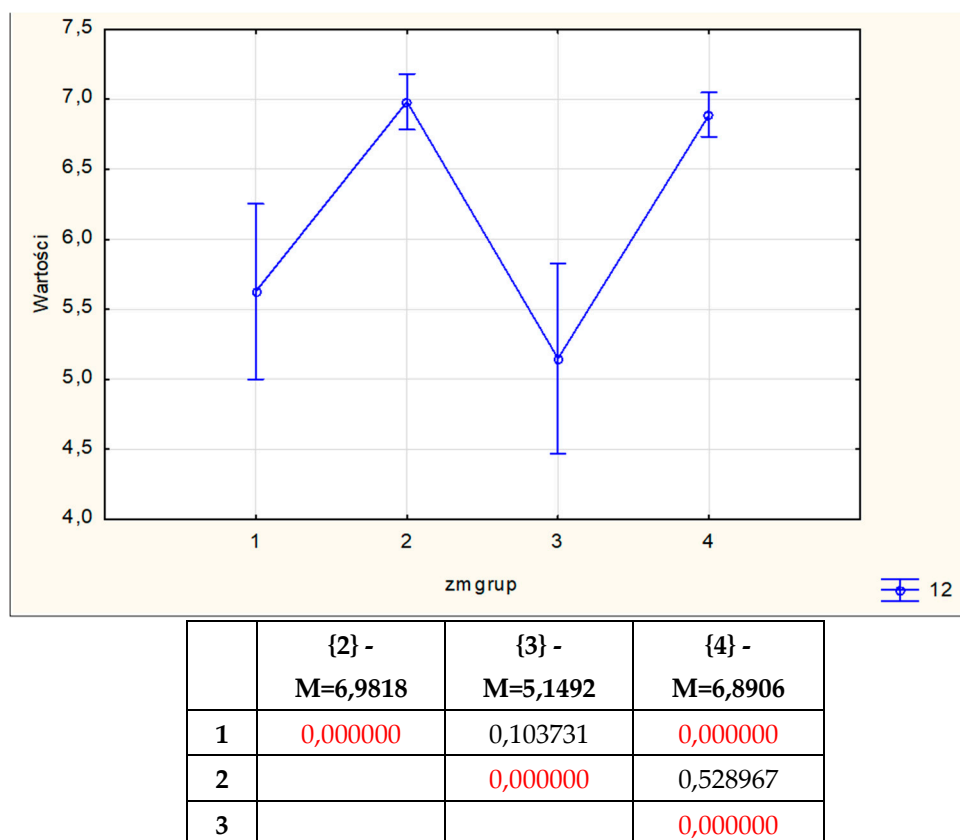
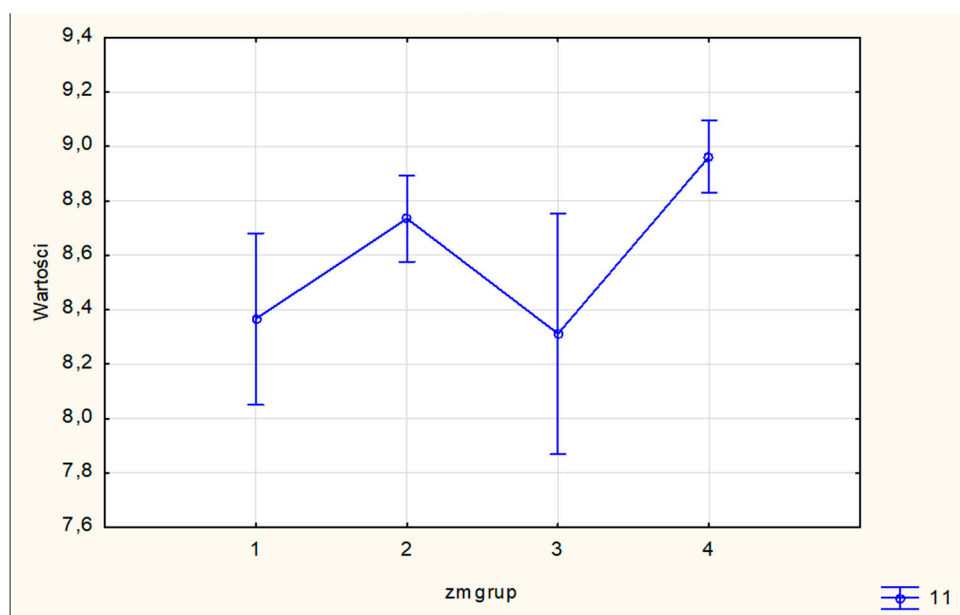
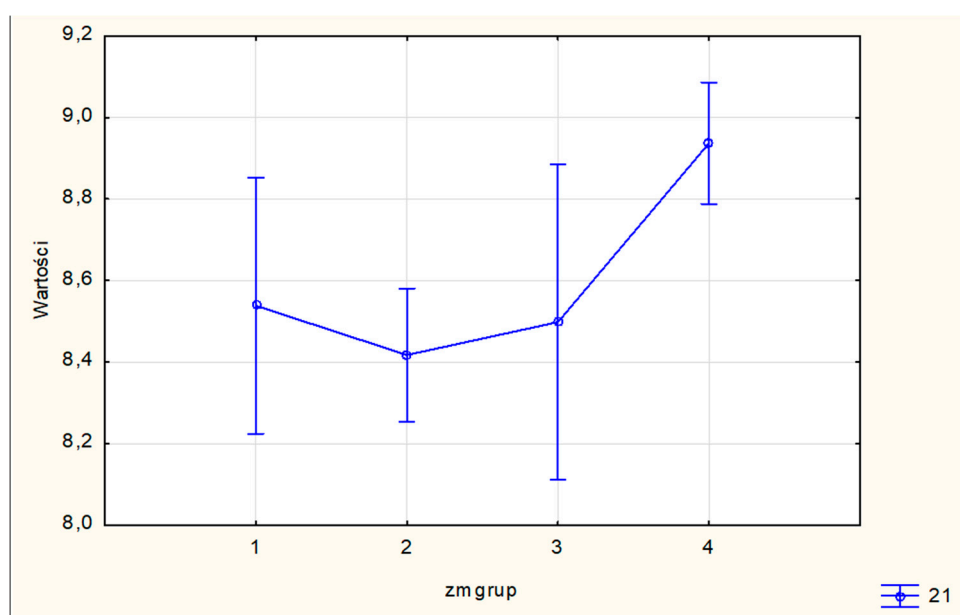


Figure S2. The comparison between the widths of teeth 12 between the boys (group 1 – R-CLP, group 2 – L-CLP, group 3 – BCLP, group 4 – healthy individuals. Statistically significant values were presented in red



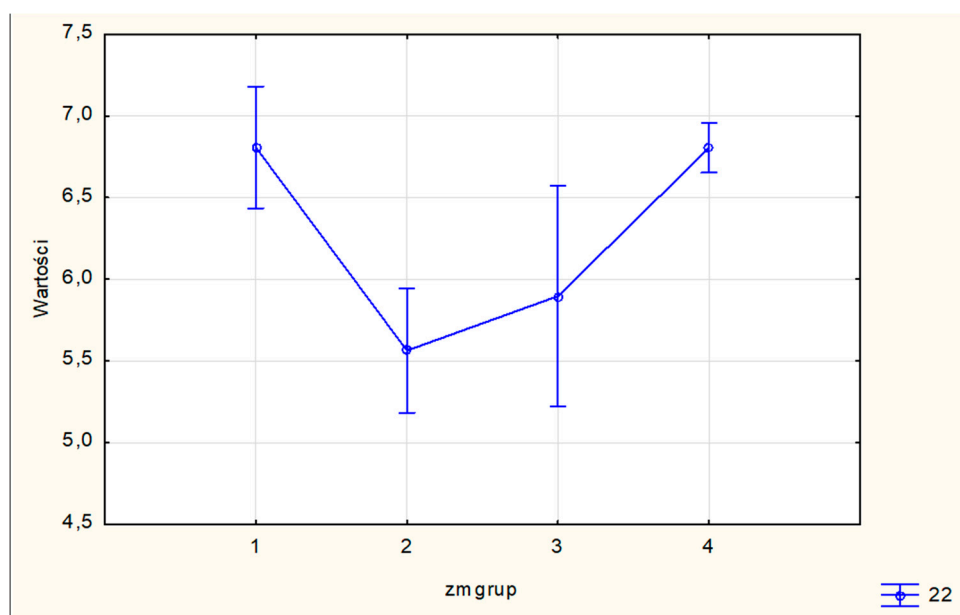
1	0,022089	0,781389	0,000227
2		0,011511	0,058681
3			0,000110

Figure S3. The comparison between the widths of teeth 11 between the boys (group 1 – R-CLP, group 2 – L-CLP, group 3 – BCLP, group 4 – healthy individuals. Statistically significant values were presented in red



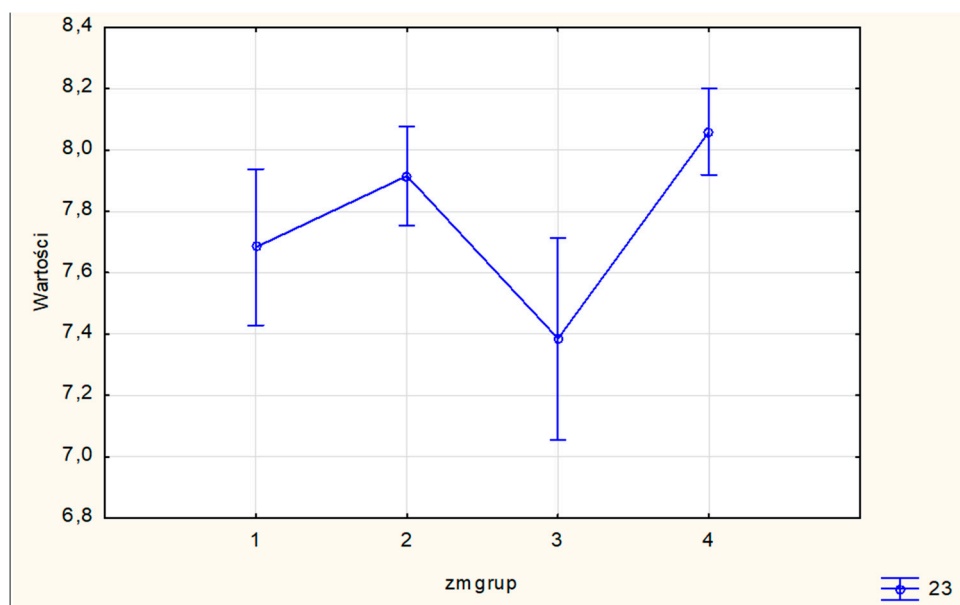
	{2} - M=8,4176	{3} - M=8,4984	{4} - M=8,9373
1	0,442692	0,835472	0,011164
2		0,631742	0,000037
3			0,009175

Figure S4. The comparison between the widths of teeth 21 between the boys (group 1 – R-CLP, group 2 – L-CLP, group 3 – BCLP, group 4 – healthy individuals. Statistically significant values were presented in red



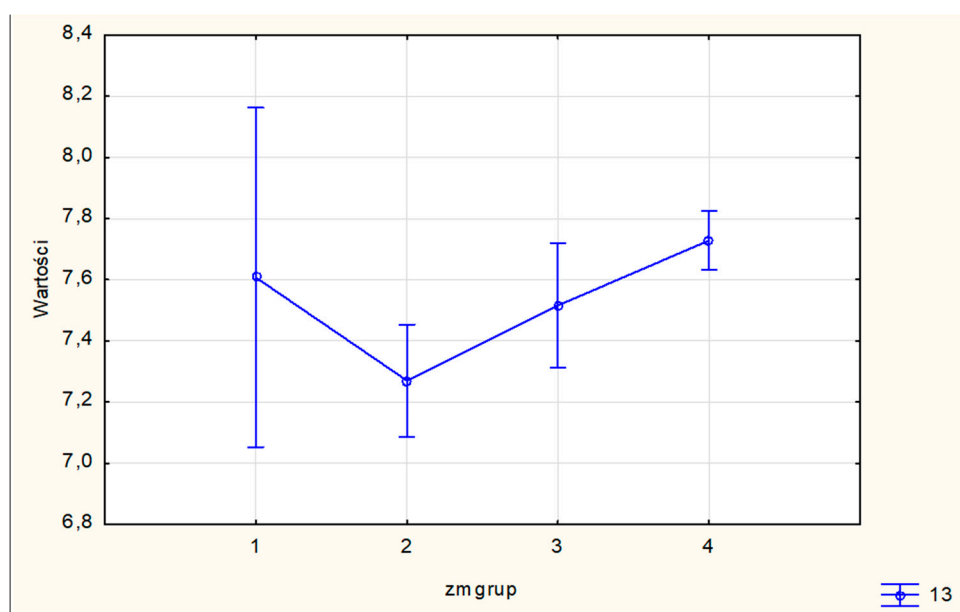
	{2} - M=5,5643	{3} - M=5,8975	{4} - M=6,8056
1	0,000000	0,005623	0,993564
2		0,271458	0,000000
3			0,002027

Figure S5. The comparison between the widths of teeth 22 between the boys (group 1 – R-CLP, group 2 – L-CLP, group 3 – BCLP, group 4 – healthy individuals. Statistically significant values were presented in red



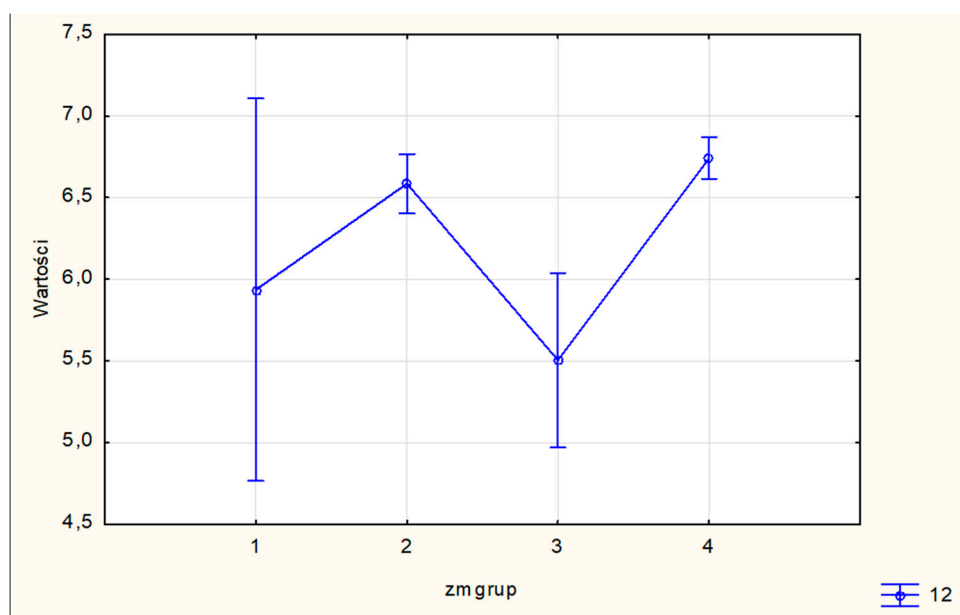
	{2} - M=7,9151	{3} - M=7,3850	{4} - M=8,0598
1	0,105035	0,090111	0,007228
2		0,000811	0,198508
3			0,000016

Figure S6. The comparison between the widths of teeth 23 between the boys (group 1 – R-CLP, group 2 – L-CLP, group 3 – BCLP, group 4 – healthy individuals). Statistically significant values were presented in red



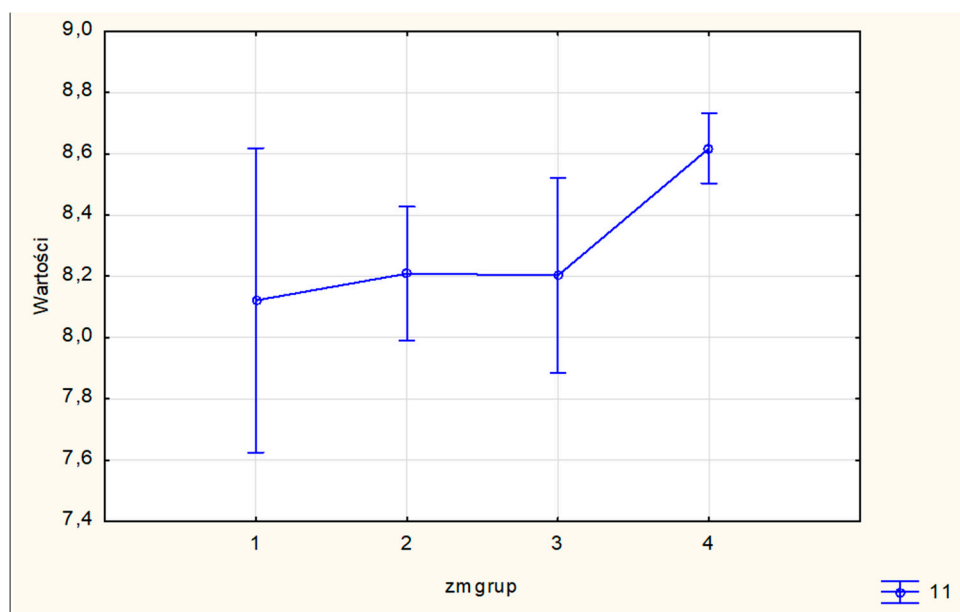
	{2} - M=7,2700	{3} - M=7,5156	{4} - M=7,7285
1	0,081498	0,666299	0,504214
2		0,099507	0,000005
3			0,110729

Figure S7. The comparison between the widths of teeth 13 between the girls (group 1 – R-CLP, group 2 – L-CLP, group 3 – BCLP, group 4 – healthy individuals). Statistically significant values were presented in red



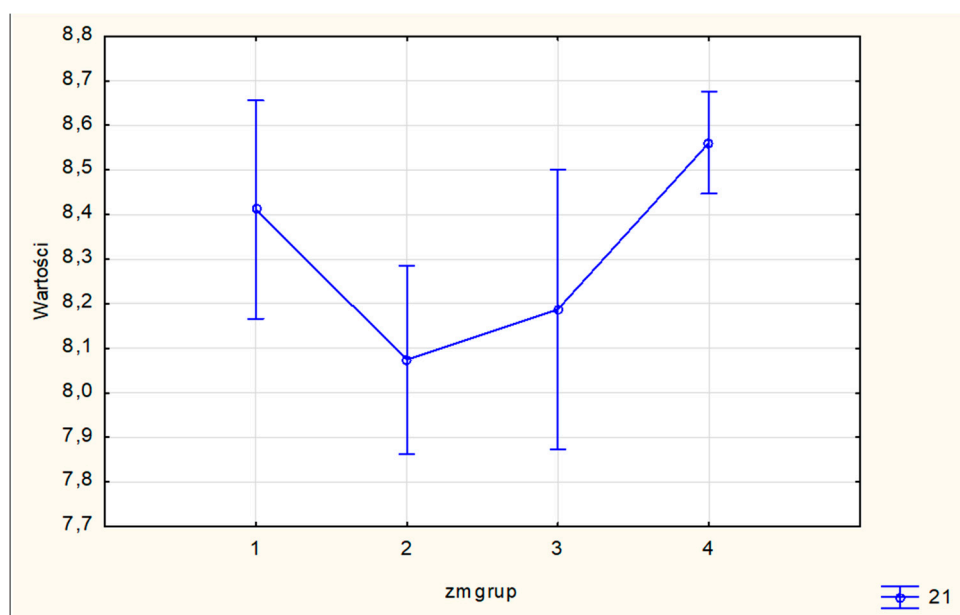
	{2} - M=8,2086	{3} - M=8,2029	{4} - M=8,6181
1	0,706336	0,748043	0,023961
2		0,974083	0,000532
3			0,008528

Figure S8. The comparison between the widths of teeth 12 between the girls (group 1 – R-CLP, group 2 – L-CLP, group 3 – BCLP, group 4 – healthy individuals. Statistically significant values were presented in red



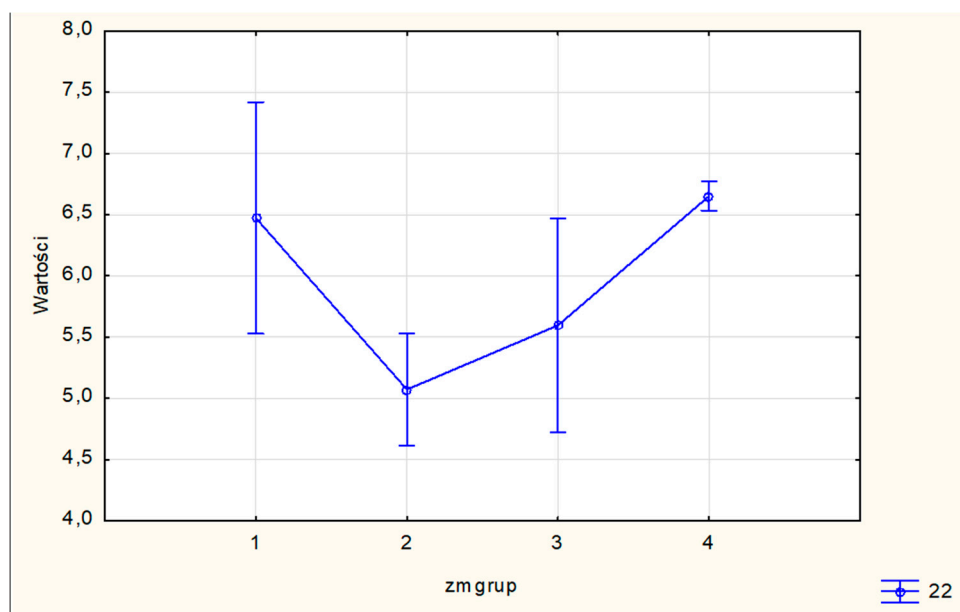
	{2} - M=8,2086	{3} - M=8,2029	{4} - M=8,6181
1	0,706336	0,748043	0,023961
2		0,974083	0,000532
3			0,008528

Figure S9. The comparison between the widths of teeth 11 between the girls (group 1 – R-CLP, group 2 – L-CLP, group 3 – BCLP, group 4 – healthy individuals). Statistically significant values were presented in red



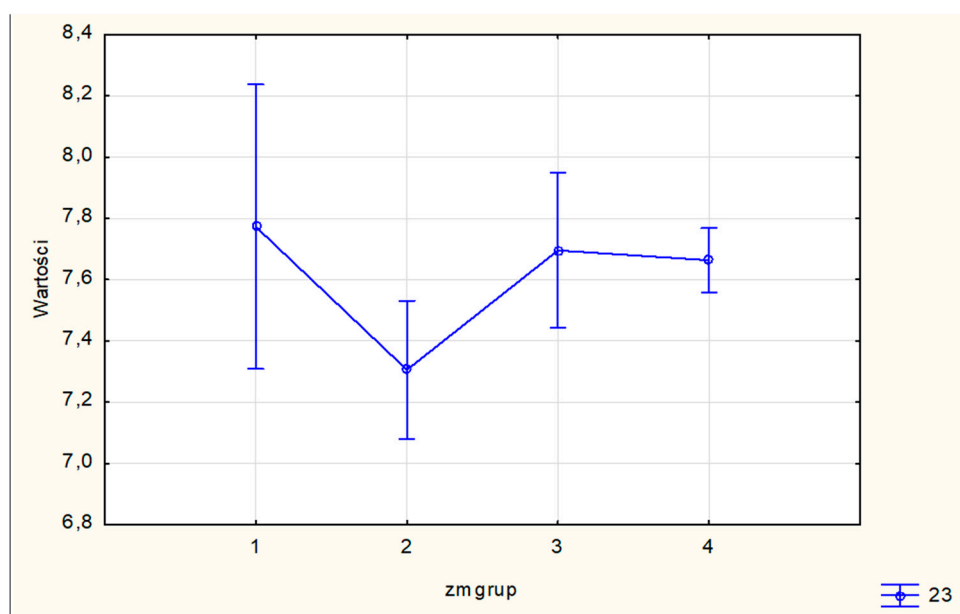
	{2} - M=8,0741	{3} - M=8,1876	{4} - M=8,5614
1	0,134549	0,361894	0,475537
2		0,503748	0,000033
3			0,013841

Figure S10. The comparison between the widths of teeth 21 between the girls (group 1 – R-CLP, group 2 – L-CLP, group 3 – BCLP, group 4 – healthy individuals). Statistically significant values were presented in red



	{2} - M=5,0725	{3} - M=5,5964	{4} - M=6,6523
1	0,000184	0,023475	0,579970
2		0,061072	0,000000
3			0,000008

Figure S11. The comparison between the widths of teeth 22 between the girls (group 1 – R-CLP, group 2 – L-CLP, group 3 – BCLP, group 4 – healthy individuals. Statistically significant values were presented in red



	{2} - M=7,3054	{3} - M=7,6953	{4} - M=7,6630
1	0,032282	0,744529	0,590436
2		0,018035	0,001274
3			0,824340

Figure S12. The comparison between the widths of teeth 23 between the girls (group 1 – R-CLP, group 2 – L-CLP, group 3 – BCLP, group 4 – healthy individuals. Statistically significant values were presented in red