

Table S1. Antimicrobial susceptibility of strain OS4^T and the related *Jannaschia* species.

Antibiotics	OS4^T	14858^T	GSW-M26^T
Clarithromycin	S	S	S
Ceftriaxone	S	S	S
Penicillin	S	R	S
Erythromycin	S	S	S
Cefotaxime	S	S	S
Rifampicin	S	S	S
Norfloxacin	S	S	S
Polymyxin B	S	S	S
Vancomycin	S	S	S
Lincomycin	S	S	S
Kanamycin	R	R	S
Carbenicillin	R	R	R
Neomycin	R	R	S
Chloramphenicol	R	R	S
Gentamycin	R	R	R
Ofloxacin	R	R	R
Oxytetracycline	R	R	R
Streptomycin	R	I	I
Ampicillin	R	R	R
Tobramycin	R	R	R
Tetracycline	R	R	R
Clindamycin	R	R	R

R: resistant to certain antibiotics; S: susceptible to certain antibiotics.

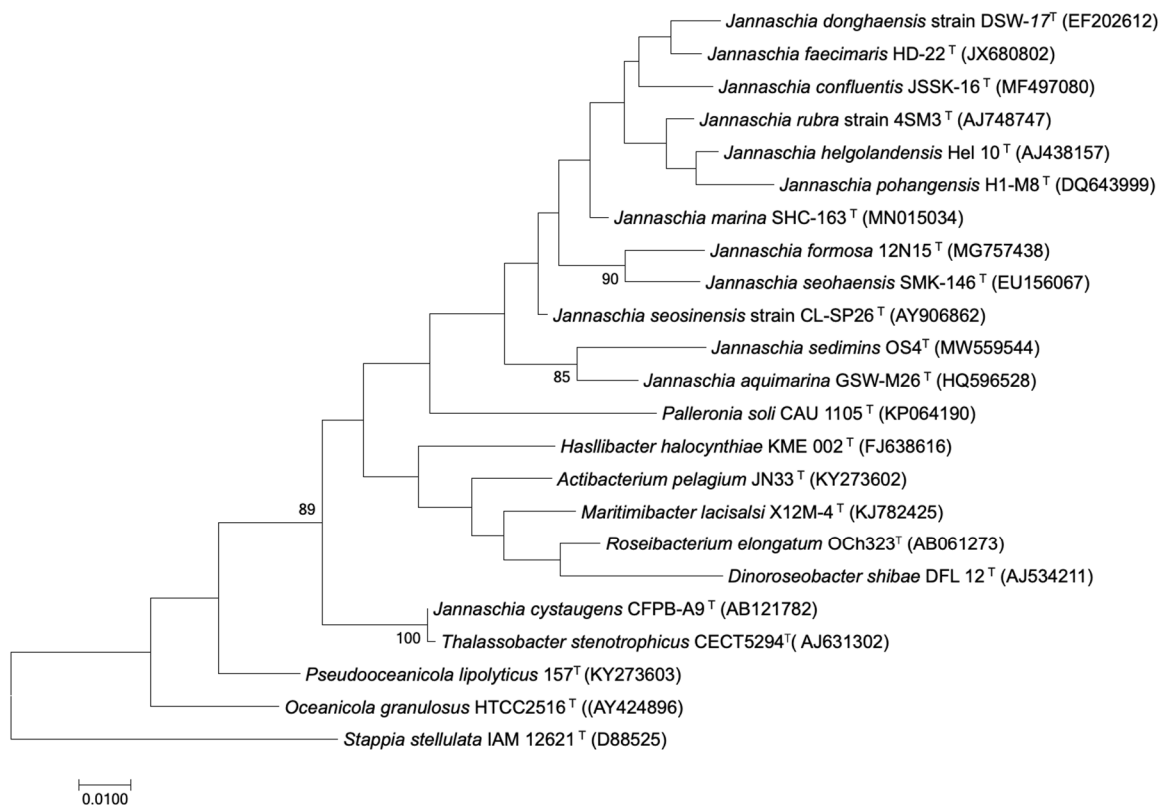


Figure S1. Phylogenetic relationship of strain OS4^T and other related species. Maximal likelihood phylogenetic tree based on 16S rRNA gene sequences, showing the relationships of strain OS4^T and related species. B *Stappia stellulata* IAM12621^T (GenBank accession number, D88525) was used as an outgroup. Bar, 0.01 substitutions per nucleotide position.

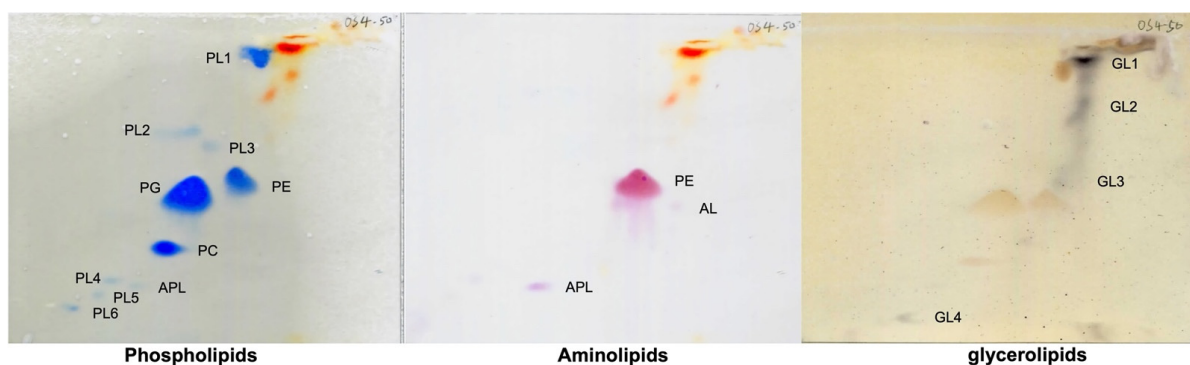


Figure S2. The polar lipid composition of OS4^T.