

## **Supporting information:**

### **Content:**

Figure S1. The central line of the triplet of TEMPO spin-probe with yeast cells (Fig. S1) with superhyperfine structure (295 K, magnetic field sweep range of 1 mT, magnetic field modulation of 0.01 mT).

Figure S2. The central line of the triplet of TEMPO spin- probe with yeast cells after CREM analysis.

Figure S3. The central line of the triplet of TEMPOL spin- probe with yeast cells (Fig. S4) with superhyperfine structure (295 K, magnetic field sweep range of 1 mT).

Figure S4. The central line of the triplet of TEMPOL spin- probe with yeast cells after CREM analysis.

Figure S5. ESR spectrum of yeast cells without the spin probes studied (240 K, magnetic field sweep range of 13 mT, magnetic field modulation of 0.2 mT, incubation time 30 min).

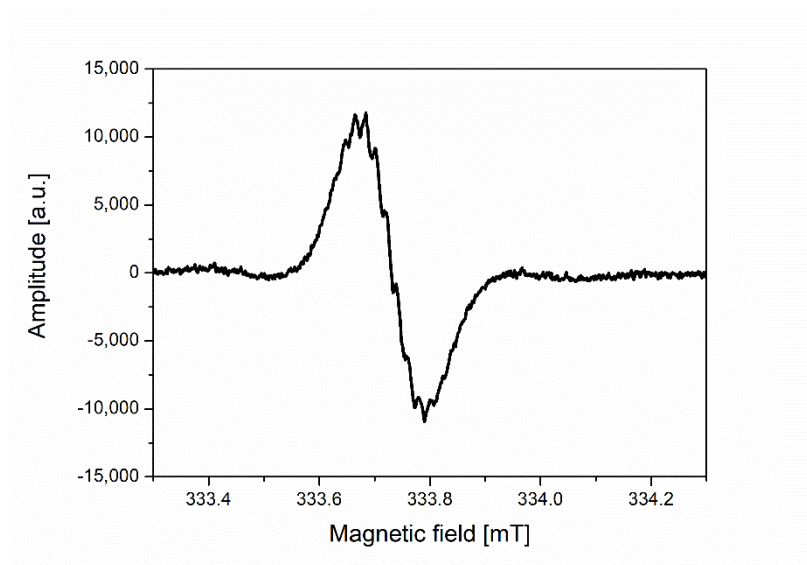


Figure S1.

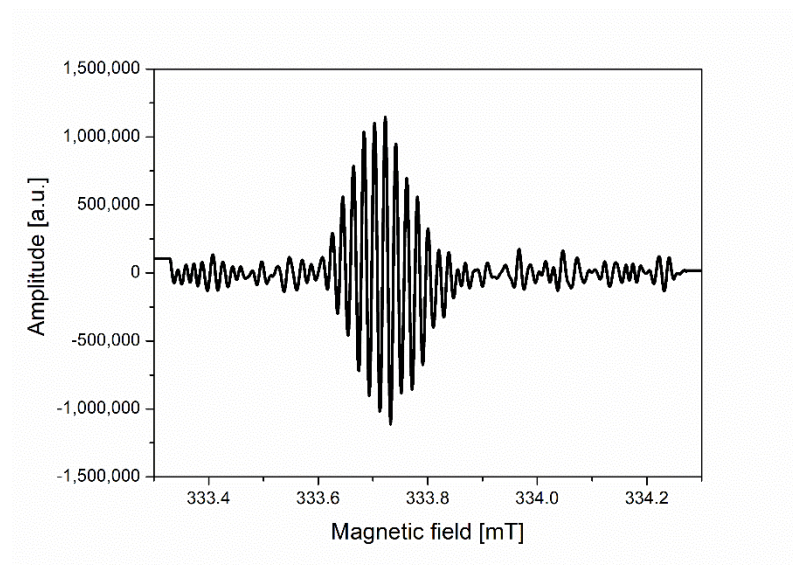


Figure S2.

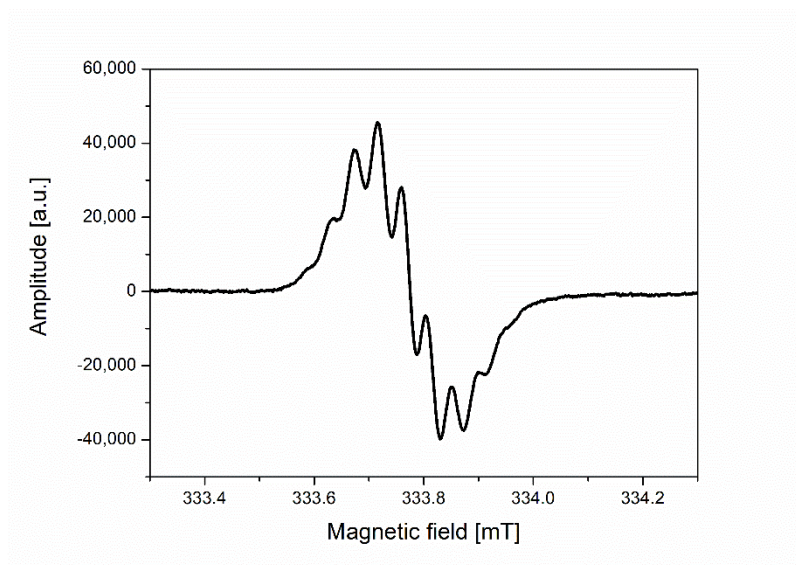


Figure S3.

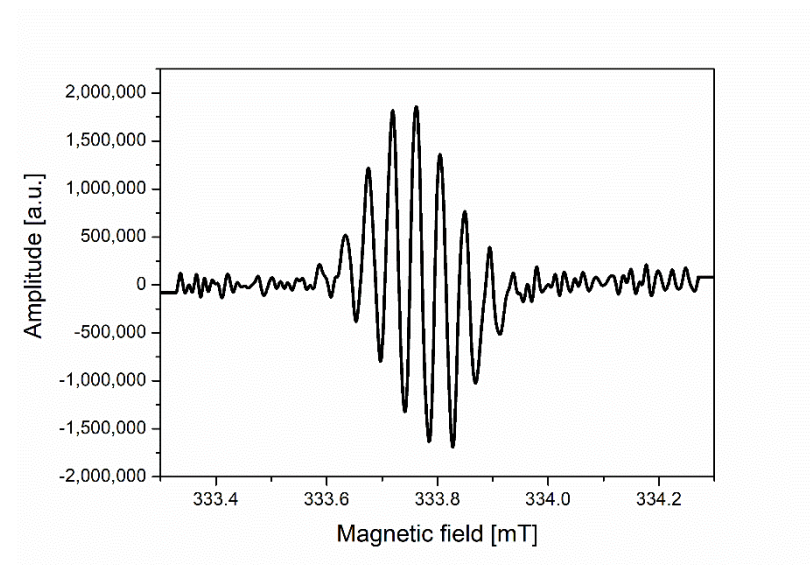


Figure S4.

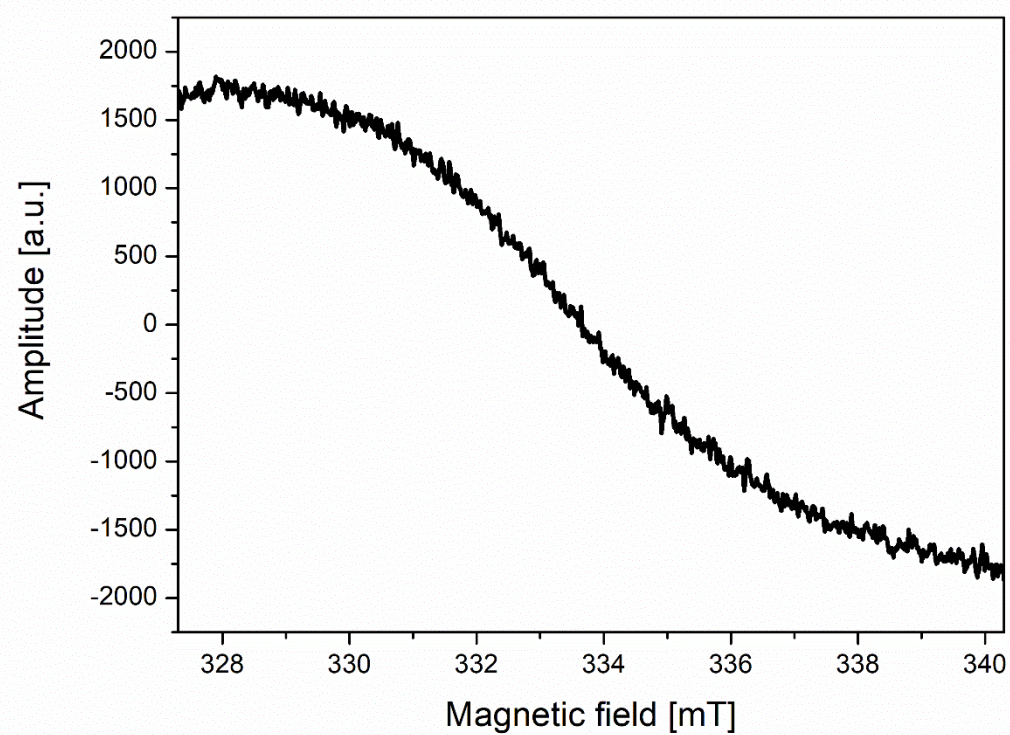


Figure S5.