

Supplementary materials for
On the set of Fellini's movies:
investigating and preserving multi-material stage costumes exploiting
spectroscopic and mass spectrometric techniques

Francesca Sabatini

University of Pisa, Department of Chemistry and Industrial Chemistry
Via Moruzzi, 13, I-56126 Pisa (Italy)
f.sabatini4@gmail.com

Jacopo La Nasa

University of Pisa, Department of Chemistry and Industrial Chemistry
Via Moruzzi, 13, I-56126 Pisa (Italy)
jacopo.lanasa@for.unipi.it

Camilla Guerrini

University of Pisa, Department of Chemistry and Industrial Chemistry
Via Moruzzi, 13, I-56126 Pisa (Italy)
kamill.96@hotmail.it

Francesca Modugno *

University of Pisa, Department of Chemistry and Industrial Chemistry
Via Moruzzi, 13, I-56126 Pisa (Italy)
francesca.modugno@unipi.it

Sara Bonadio

Opificio delle Pietre Dure
Via Alfani, 78, I-50121 Firenze (Italy)
sara.bonadio@virgilio.it

Federica Ursino

Opificio delle Pietre Dure
Via Alfani, 78, I-50121 Firenze (Italy)
derikkia@hotmail.it

Isetta Tosini

Opificio delle Pietre Dure
Via Alfani, 78, I-50121 Firenze (Italy)
isetta.tosini@beniculturali.it

Maria Perla Colombini

University of Pisa, Department of Chemistry and Industrial Chemistry
Via Moruzzi, 13, I-56126 Pisa (Italy)
maria.perla.colombini@unipi.it

Ilaria Degano*

University of Pisa, Department of Chemistry and Industrial Chemistry
Via Moruzzi, 13, I-56126 Pisa (Italy)
ilaria.degano@unipi.it

Table S1: Sample list with relative sampling point and analysis performed.

	Sample	Sampling point	FTIR	SEM-EDX	Py/GC-MS	HPLC-DAD-MS
Il Casanova	C1	Warp	-	X	X	X
	C2	Lace applied on the neckline	X	X	X	X
	C3	Volant applied on the sleeve	-	X	-	X
	C4	Corset	-	X	-	X
	C5	Decoration of the hat	-	X	X	X
	C7	Lace applied on the sleeve	-	X	X	X
	C8	Right sleeve of the corset	X	X	X	-
	C9	Lace applied on the right side of the neckline	X	-	-	-
	C10	Volant applied on the left sleeve	X	X	-	-
	C11	Corset decoration on the right side	X	X	X	-
	C12	Trimming on the left side of the neckline	X	X	-	-
	C13	Lace applied on the sleeve	X	-	-	-
	C14	Decoration of the top part of the hat	X	X		
Rome	T	Lining of the tunic	X	-	X	X
	P	Inside trimming of the chasuble	X	-	X	X

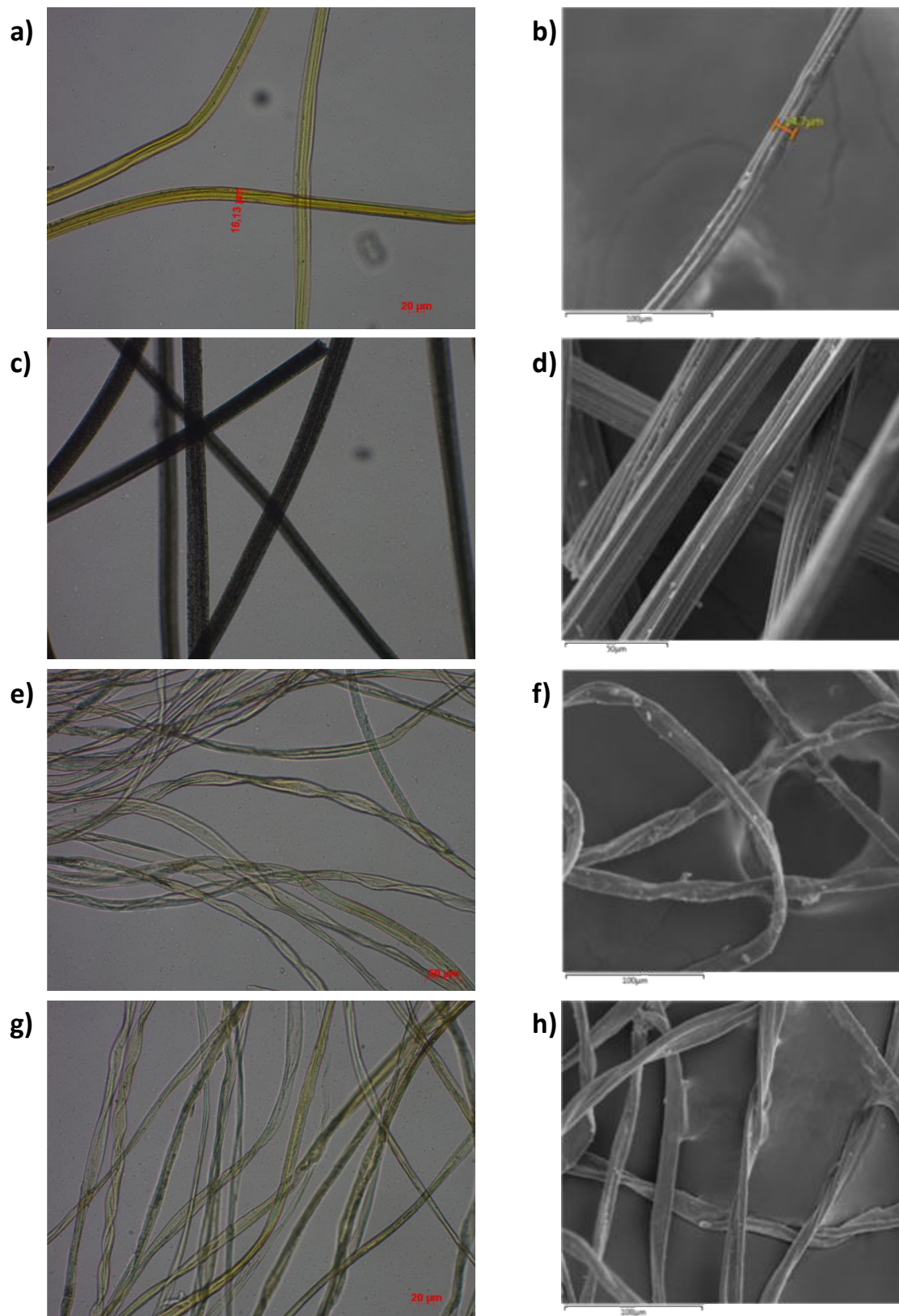


Figure S1: 10x OM images and Secondary Electron images (SE) of samples: C1 (**a** and **b**); C2 (**c** and **d**); C3 (**e** and **f**); C4 (**g** and **h**).

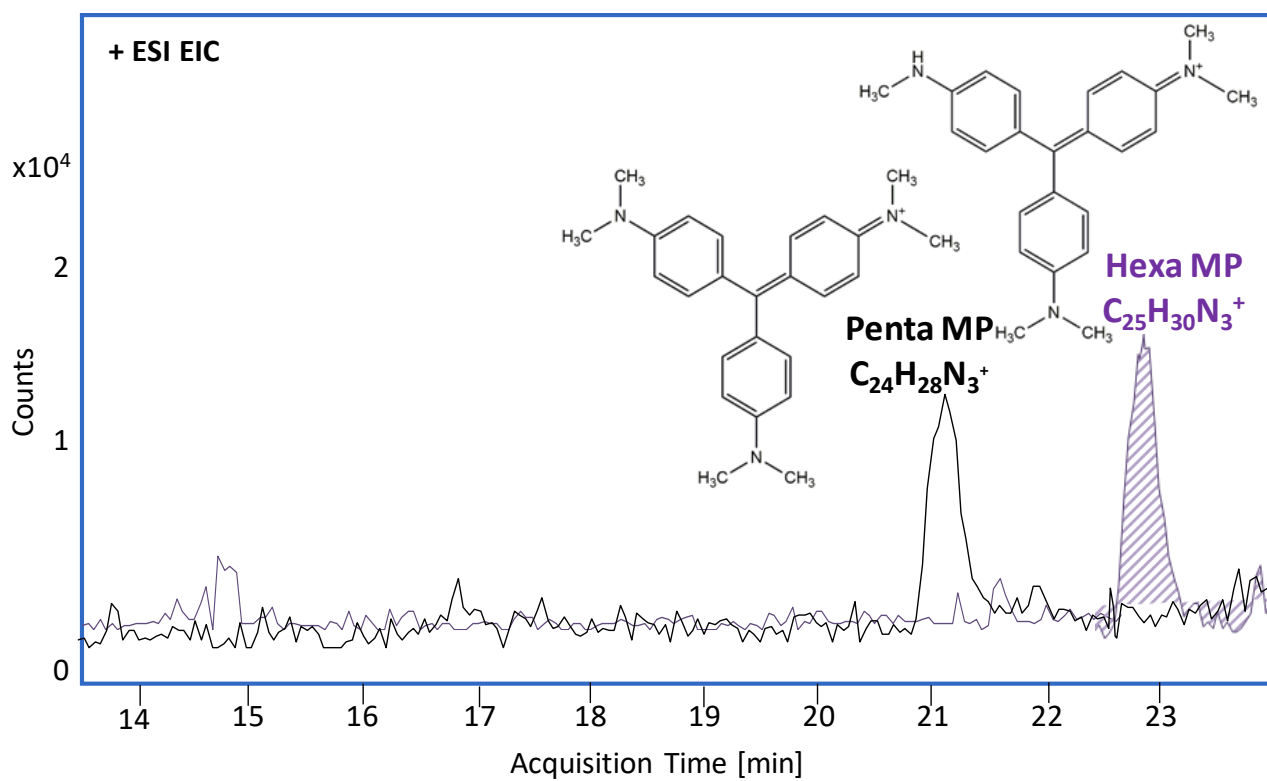


Figure S2: LC-ESI-Q-ToF EIC of $C_{24}H_{28}N_3^+$ (penta-N-methyl pararosaniline) and $C_{25}H_{30}N_3^+$ (hexa-N-methyl pararosaniline) from extracts of sample C5. Positive acquisition mode.

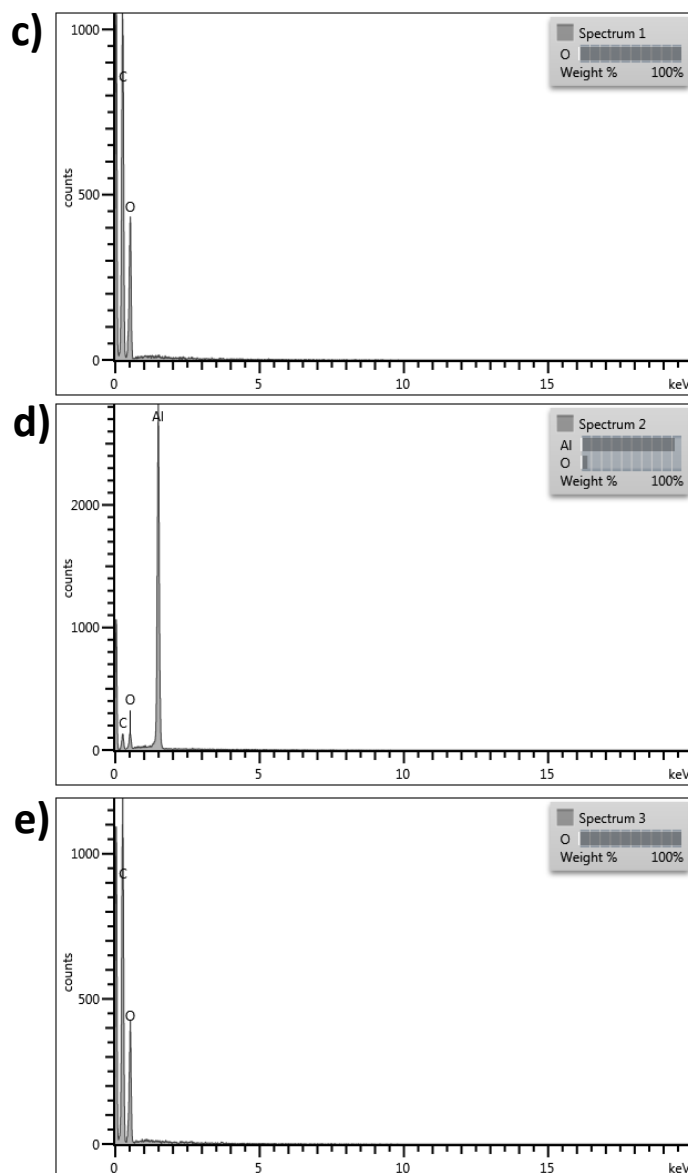
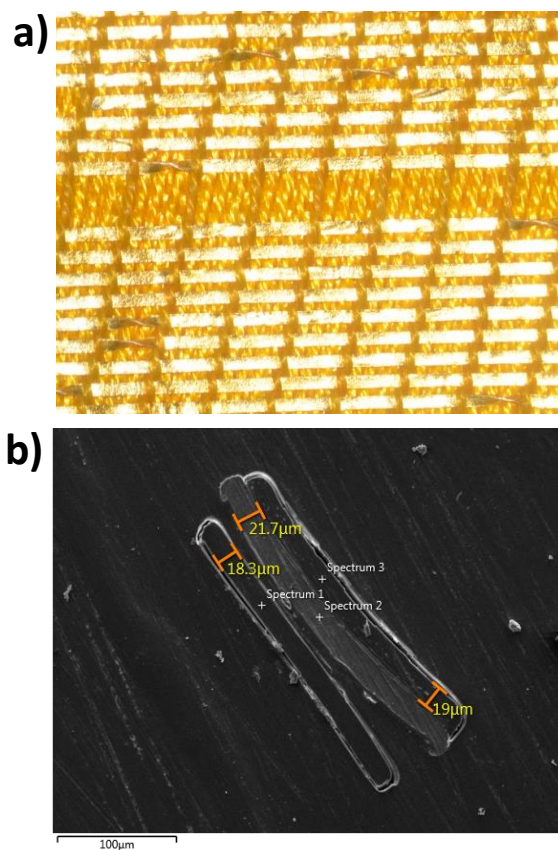


Figure S3: a) OM image of sample C8; **b)** Secondary Electron image (SE) of sample C8; **c)** EDX spectrum of the point labeled as 1 in **b)**; **d)** EDX spectrum of the point labeled as 2 in **b)**; **e)** EDX spectrum of the point labeled as 3 in **b)**

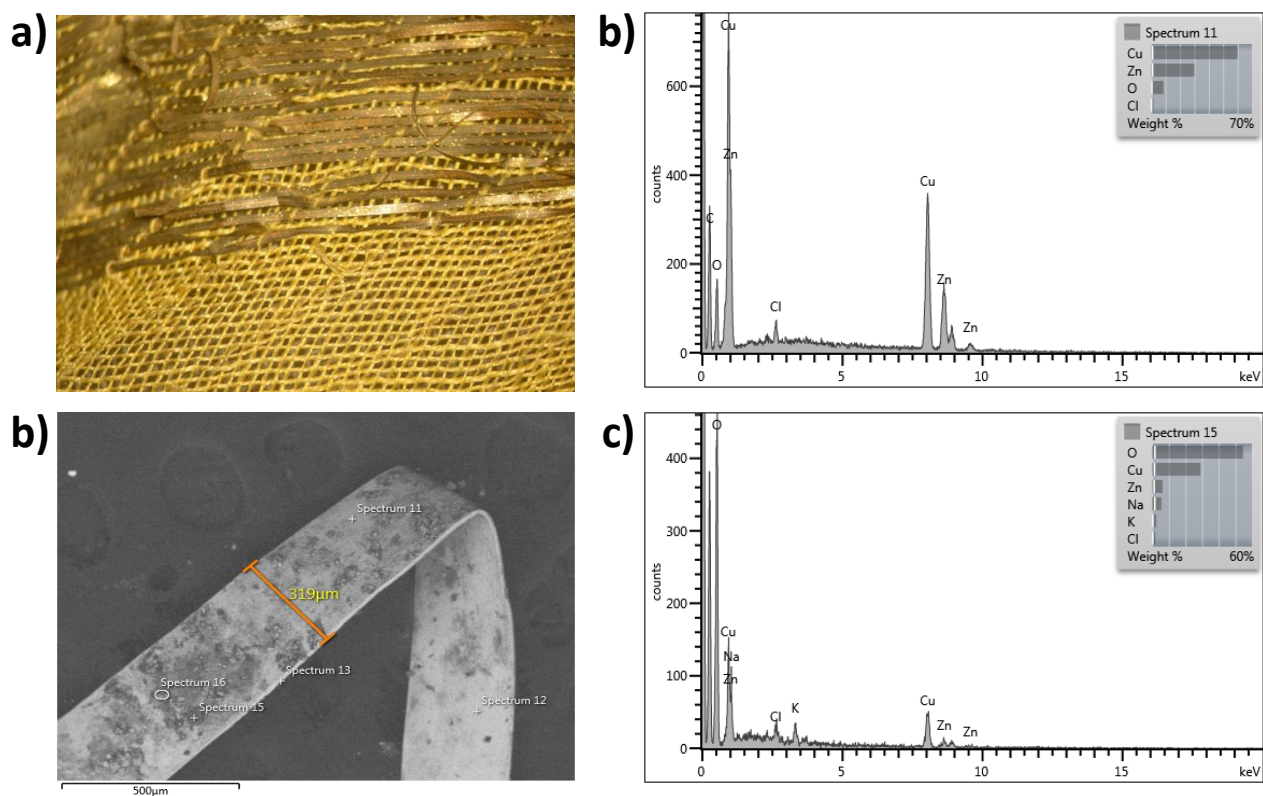


Figure S4: a) OM image of sample C11; **b)** Secondary Electron image (SE) of sample C11; **c)** EDX spectrum of the point labeled as 11 in **b)**; **d)** EDX spectrum of the point labeled as 15 in **b)**.

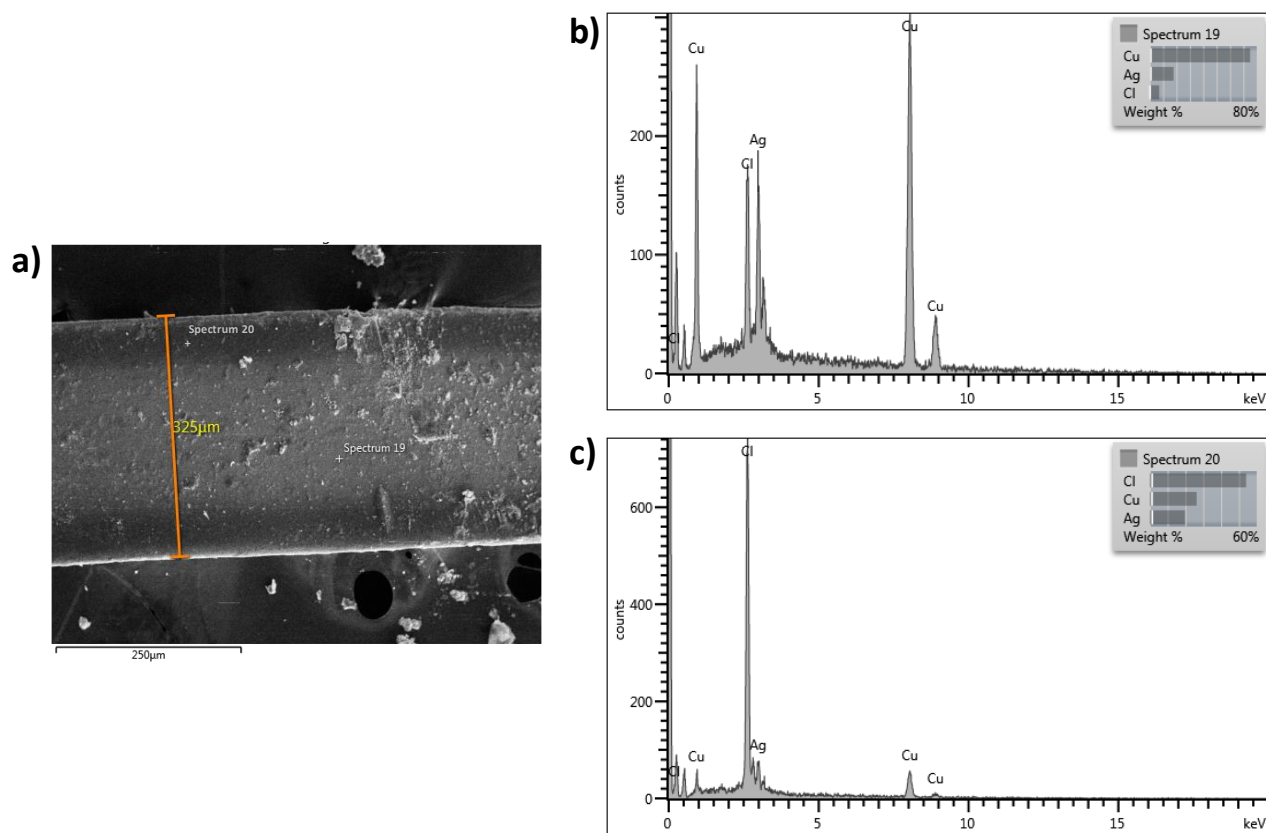


Figure S5: a) Secondary Electron image (SE) of sample C14; **b)** EDX spectrum of the point labeled as 19 in **a)**; **c)** EDX spectrum of the point labeled as 20 in **a)**.