

Supplementary Materials

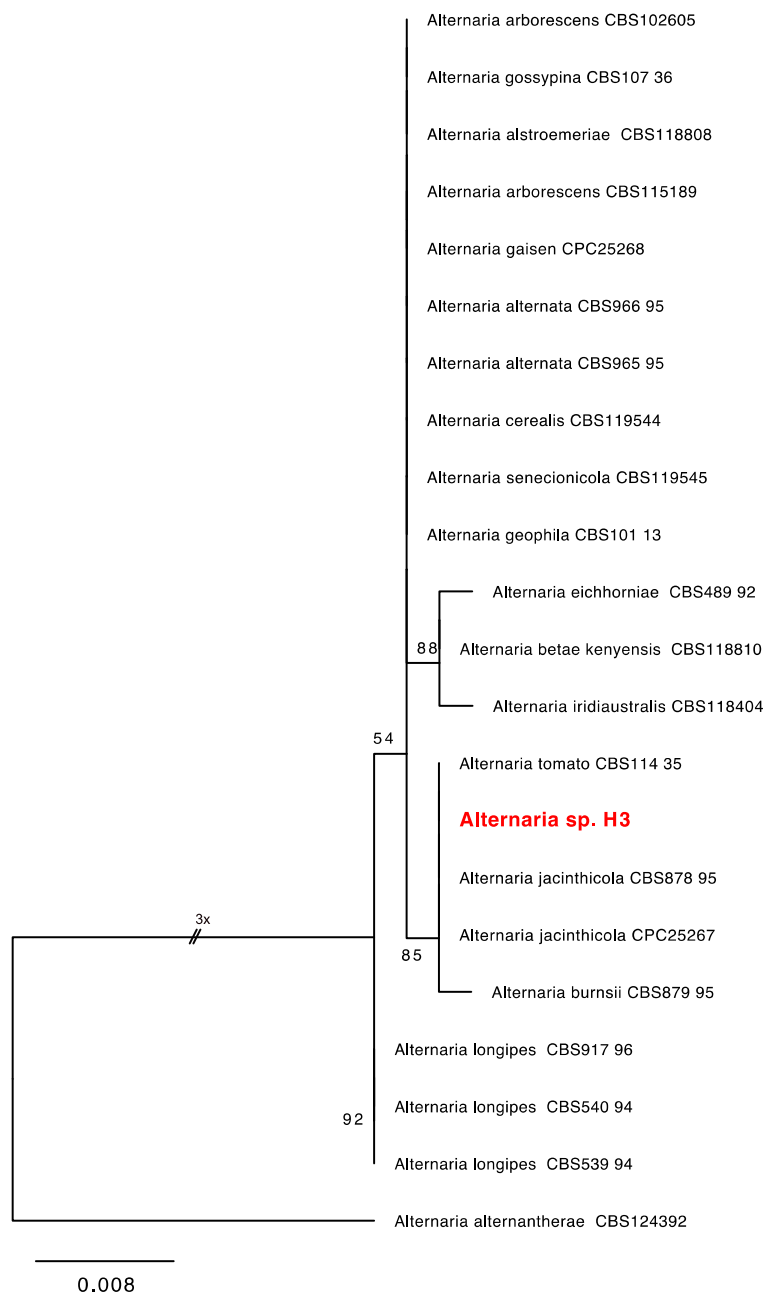


Figure S1: Phylogram generated from maximum likelihood analysis based on ITS sequence data of analysed *Alternaria* species. Isolates derived from this study are in red. The tree is rooted to *A. alternantherae* (CBS124392)

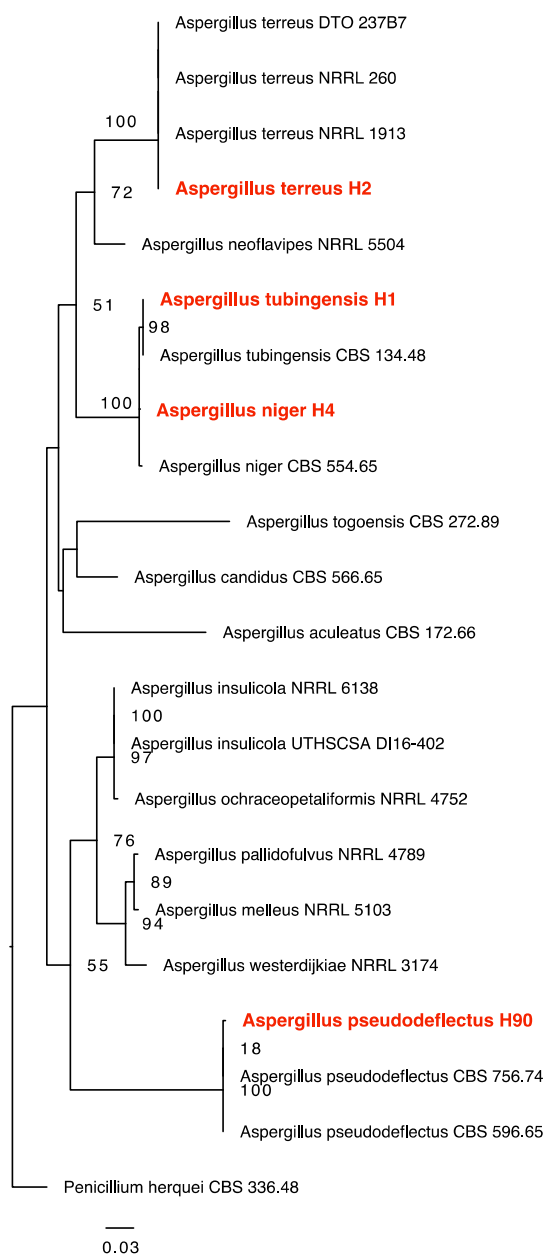


Figure S2: Phylogram generated from maximum likelihood analysis based on ITS sequence data of analysed *Aspergillus* species. Isolates derived from this study are in red. The tree is rooted to *Penicillium herquei* (CBS 336.48)

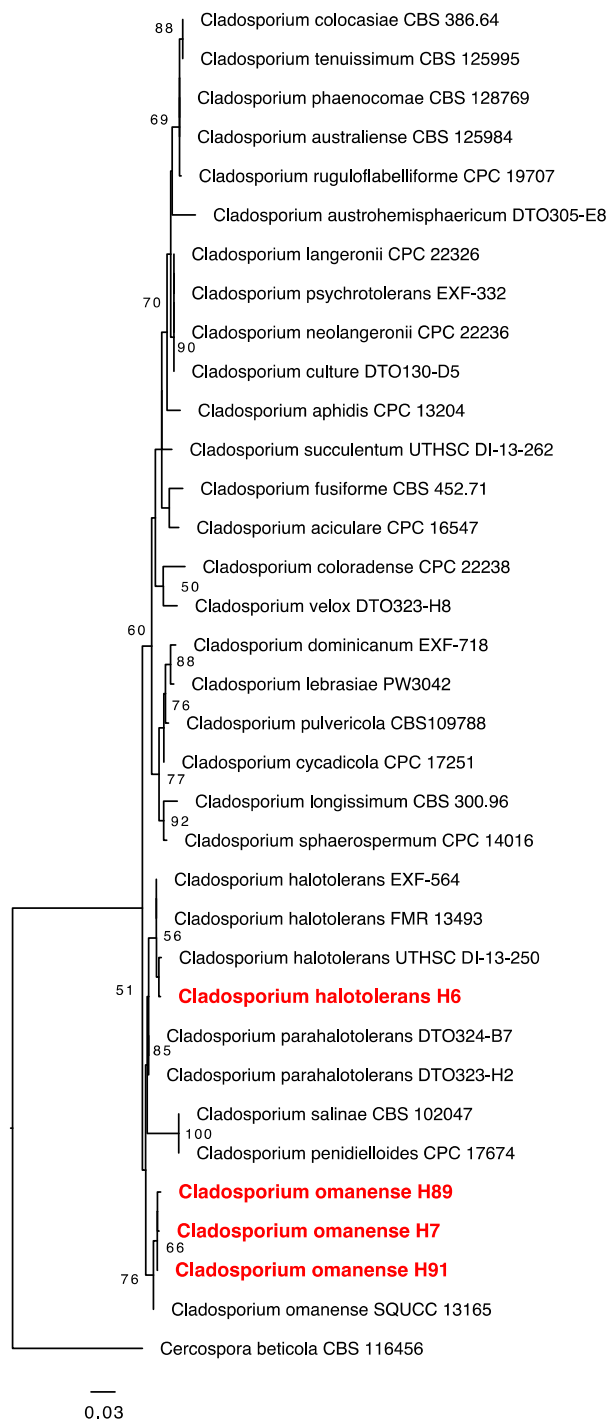


Figure S3: Phylogram generated from maximum likelihood analysis based on ITS sequence data of analysed *Cladosporium* species. Isolates derived from this study are in red. The tree is rooted to *Cercospora beticola* (CBS 116456).

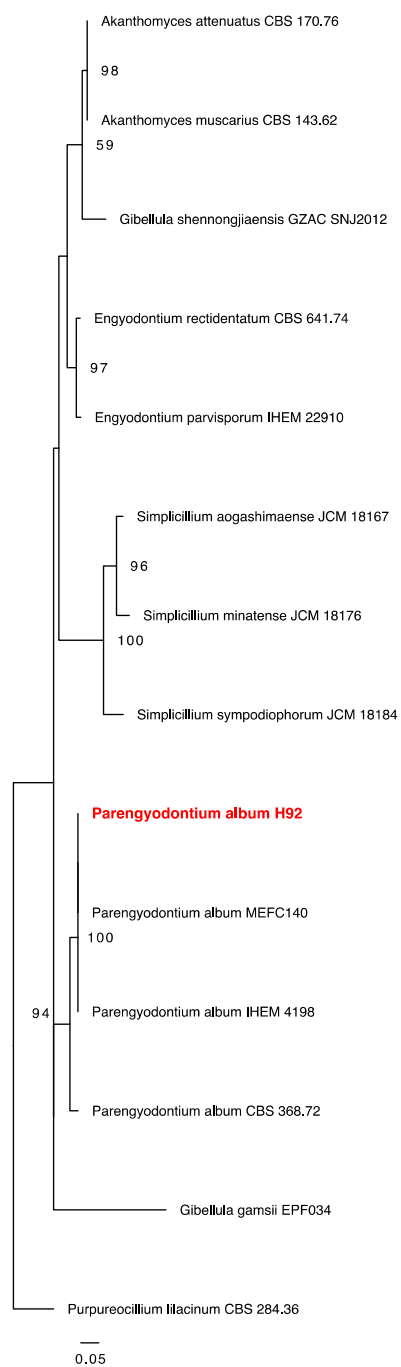


Figure S4: Phylogram generated from maximum likelihood analysis based on ITS sequence data of analysed *Parengyodontium* species. Isolates derived from this study are in red. The tree is rooted to *Purpureocillium lilacinum* (CBS 284.36).