

Supplementary Files

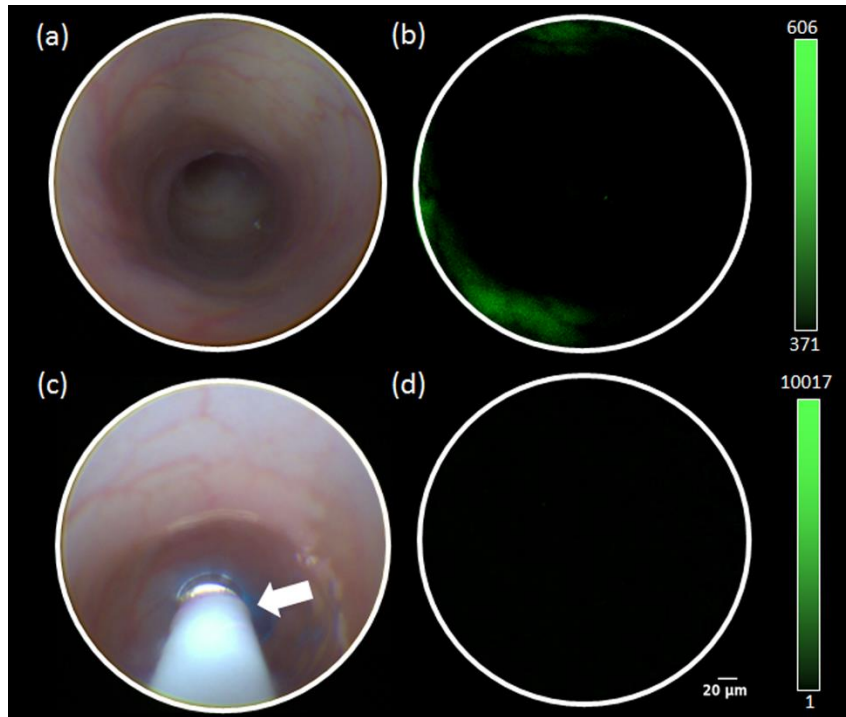


Figure S1. *In vivo* DSFE imaging of normal mouse colon without bacterial injection. (a) White light, and (b) fluorescence images of normal mouse colon using WFE system. (c) Contacted CFEM probe (white arrow) in normal mouse colon. (d) Fluorescence image of the CFEM probe. The measured fluorescent signal was 76.0 ± 48.0 . Note that the color scale bars of the fluorescence images (b and d) are the same as figure 4.

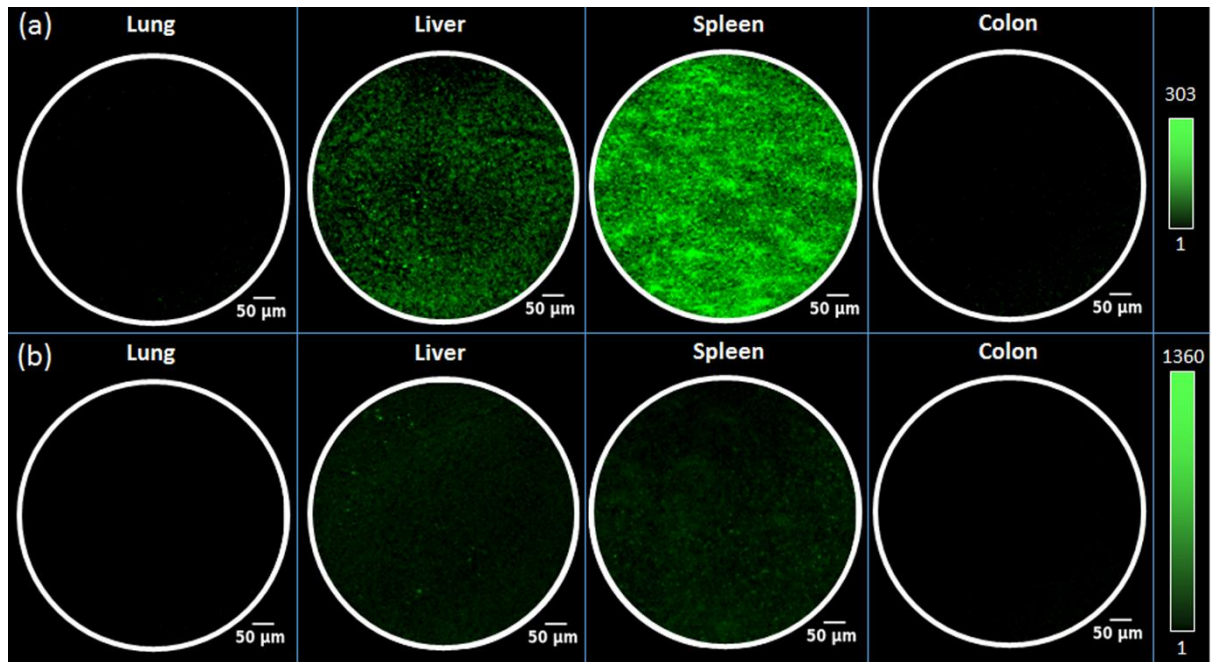


Figure S2. *Ex vivo* autofluorescence image of normal mouse organ without bacterial injection using CFEM. (a) Autofluorescence images of each organ with an optimized fluorescence scale bar with the spleen. (b) Autofluorescence images of each organ after scale adjustment same as figure 5. The fluorescence signal intensity of lung, liver, spleen, and colon were 24.0 ± 23.8 , 103.0 ± 54.9 , 117.0 ± 66.2 , and 25 ± 21.6 , respectively.