

Supplementary Materials

Exploration of a extracellular polymeric substance from earthworm gut bacterium (*Bacillus licheniformis*) for bioflocculation and heavy metal removal potential

Isolation and characterization of the microorganism

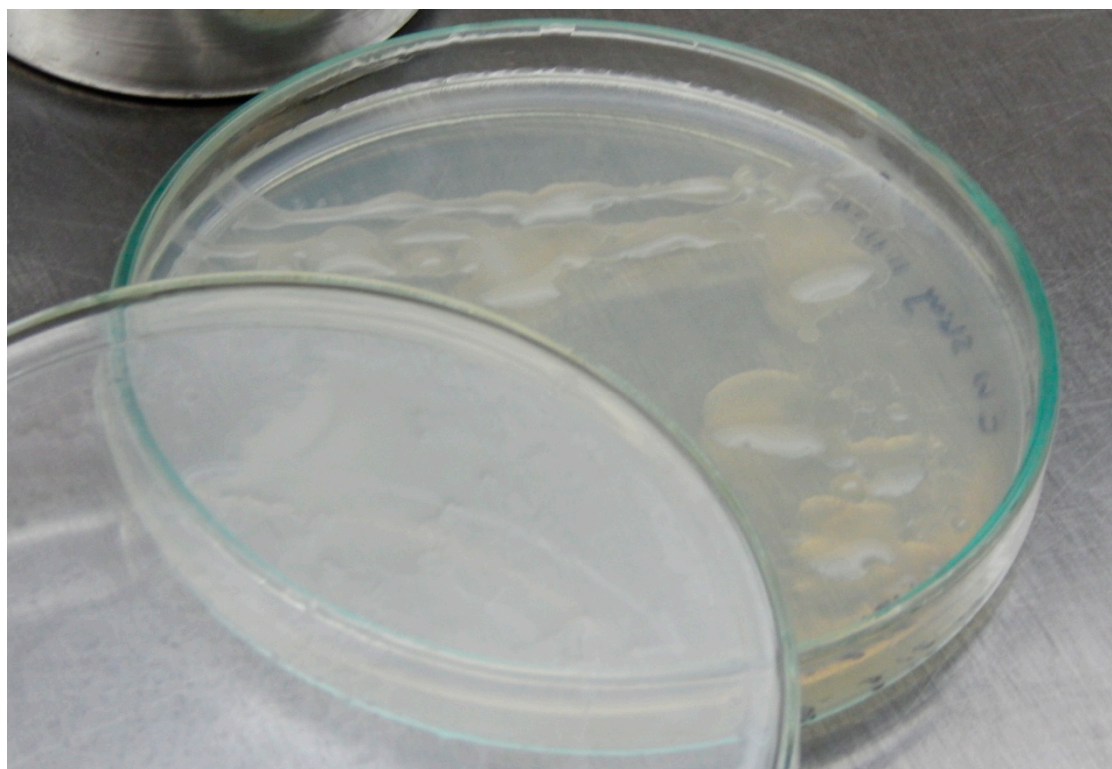


Figure 1. The isolation of the bacteria with a characteristic slimy, mucoid phenotypic nature from the gut of the earthworm *Metaphire posthuma*.

Determination of Cu(II) and Zn(II) adsorption efficiency

Calibration curve:

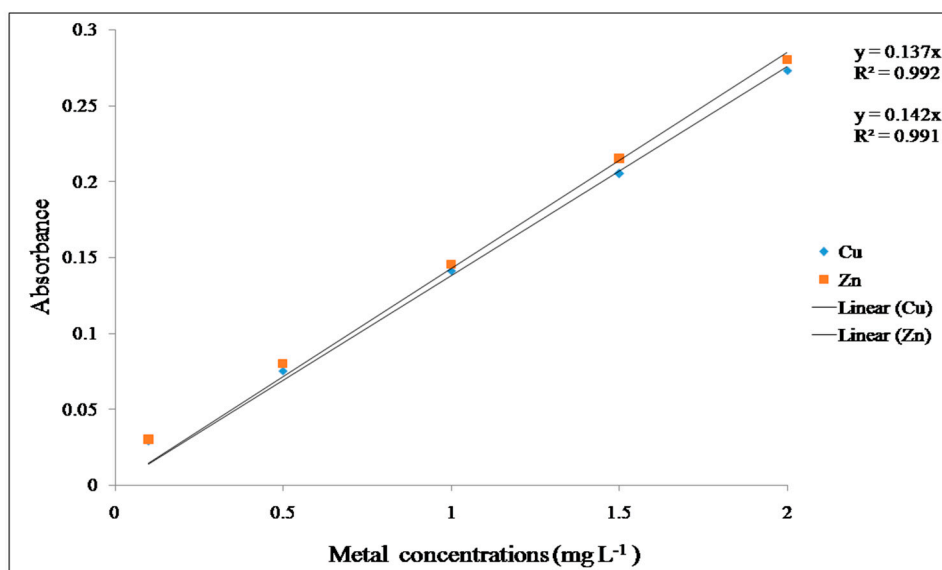


Figure 2. Atomic absorption spectroscopy (AAS) standard curve for metals Cu(II) and Zn(II).