

Figure S1: Data associated with the response surface methodology, implanted to optimize the 1-propanol organosolv treatment. A, desirability function; B, correlation between actual (measured) and predicted values. Number designated with different color in the inset tables denote statistically different values.

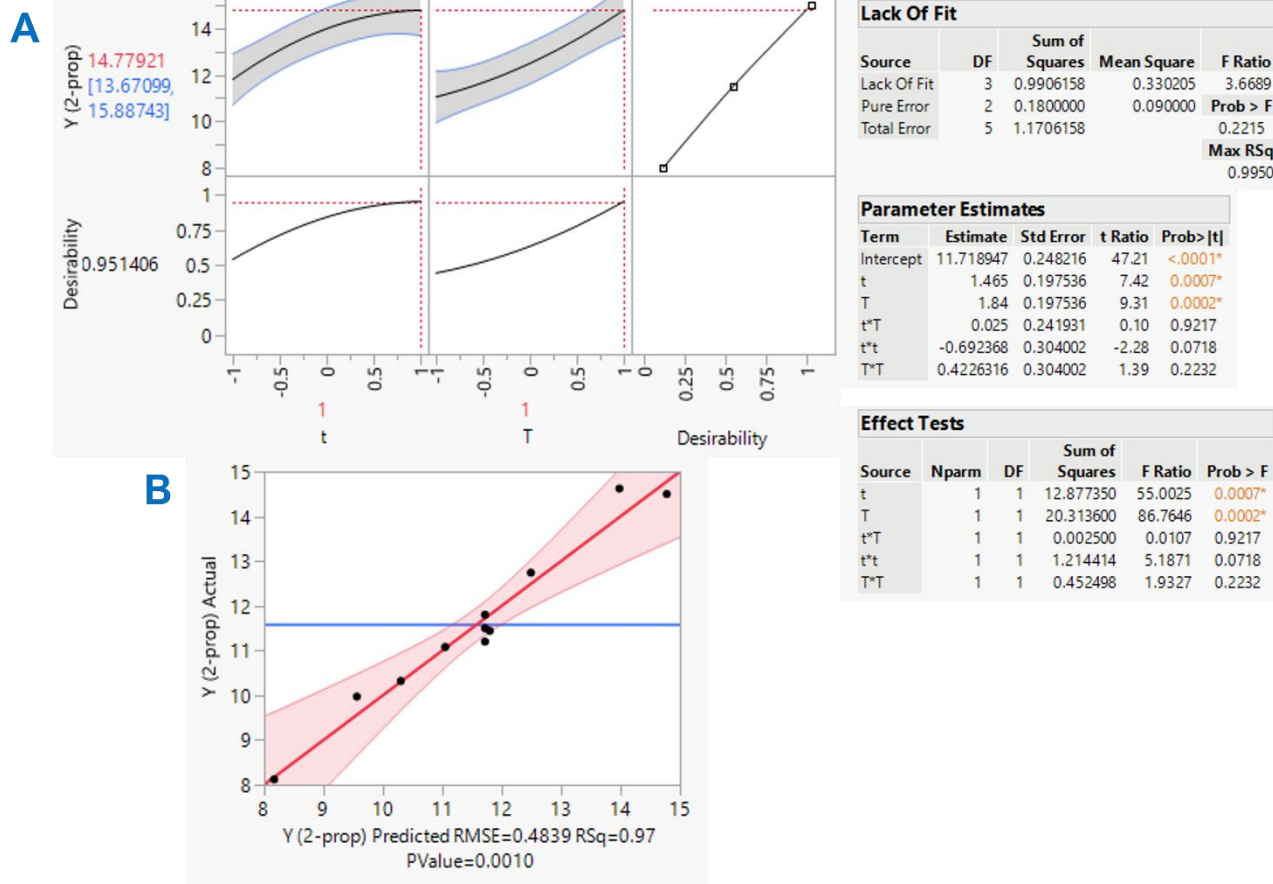


Figure S2: Data associated with the response surface methodology, implanted to optimize the 2-propanol organosolv treatment. A, desirability function; B, correlation between actual (measured) and predicted values. Number designated with different color in the inset tables denote statistically different values.

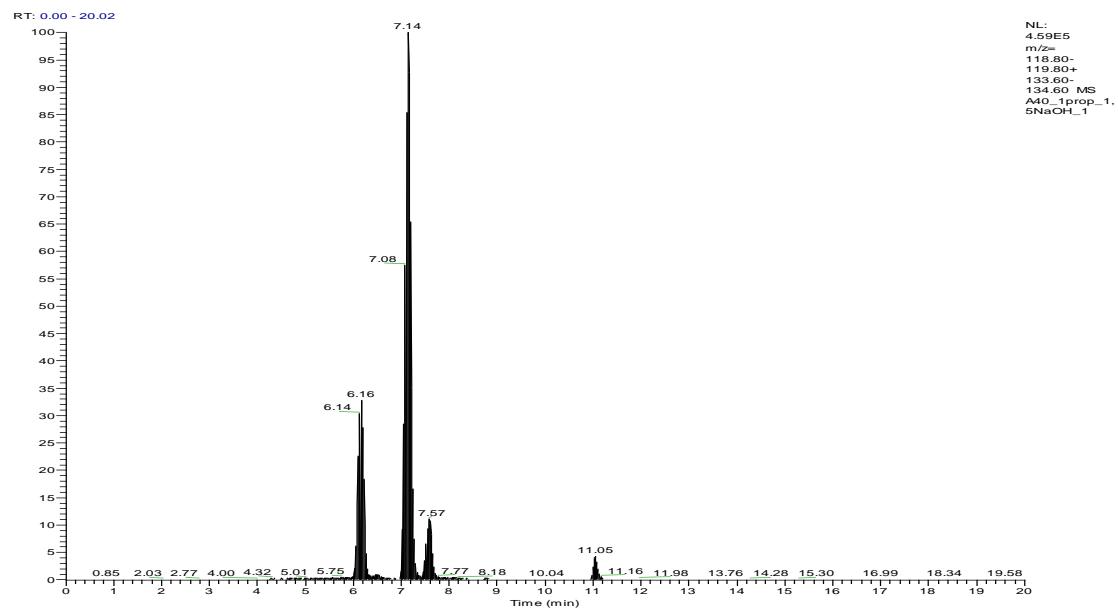
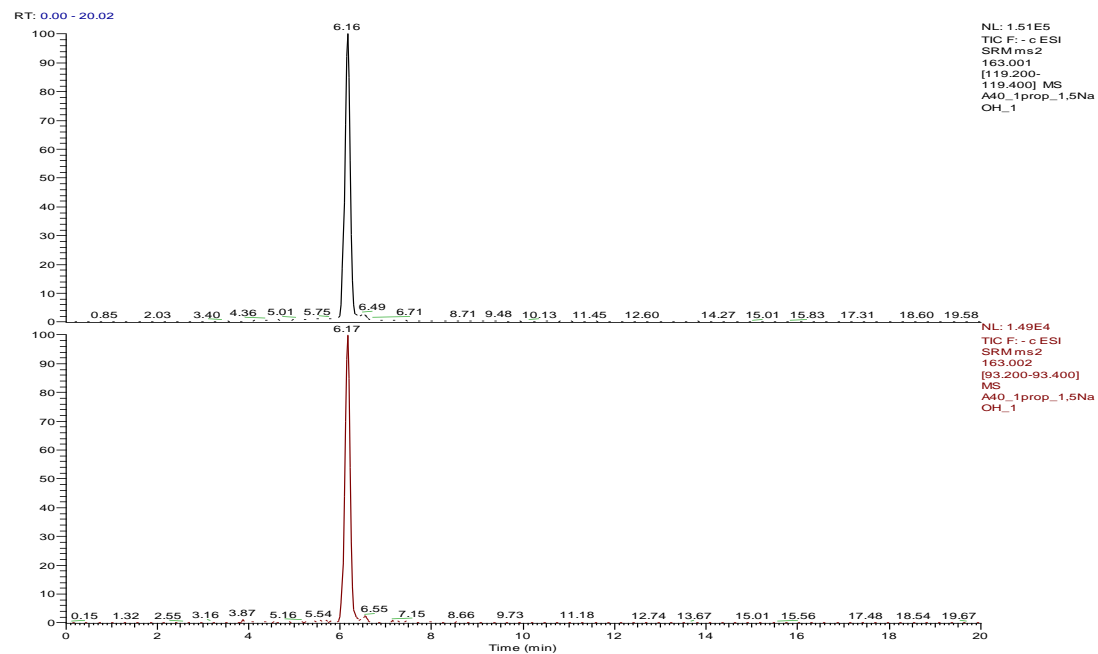


Figure S3: A representative total ion chromatogram of 1-propanol extract obtained under optimized conditions: RT 6.16 min, p-coumaric acid; RT 7.14 min, ferulic acid).

p-Coumaric acid: m/z 163.1 \rightarrow 119.3, 163.1 \rightarrow 93.3



Ferulic acid: m/z 193 \rightarrow 134.1, 193 \rightarrow 178.1

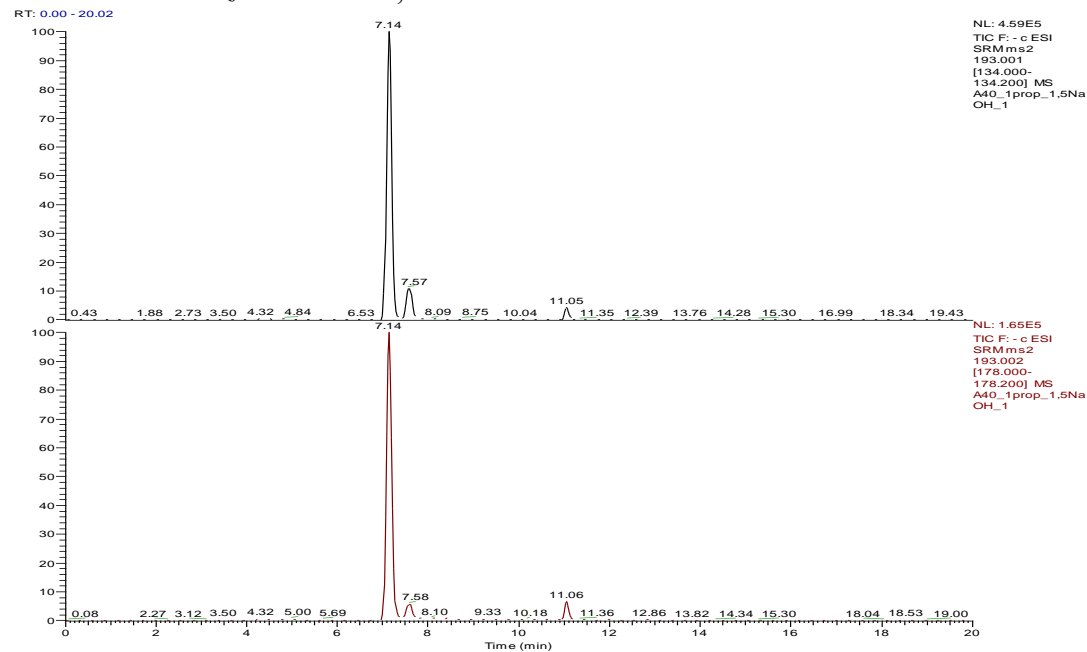


Figure S4: Fragmentation patterns of p-coumaric and ferulic acids.