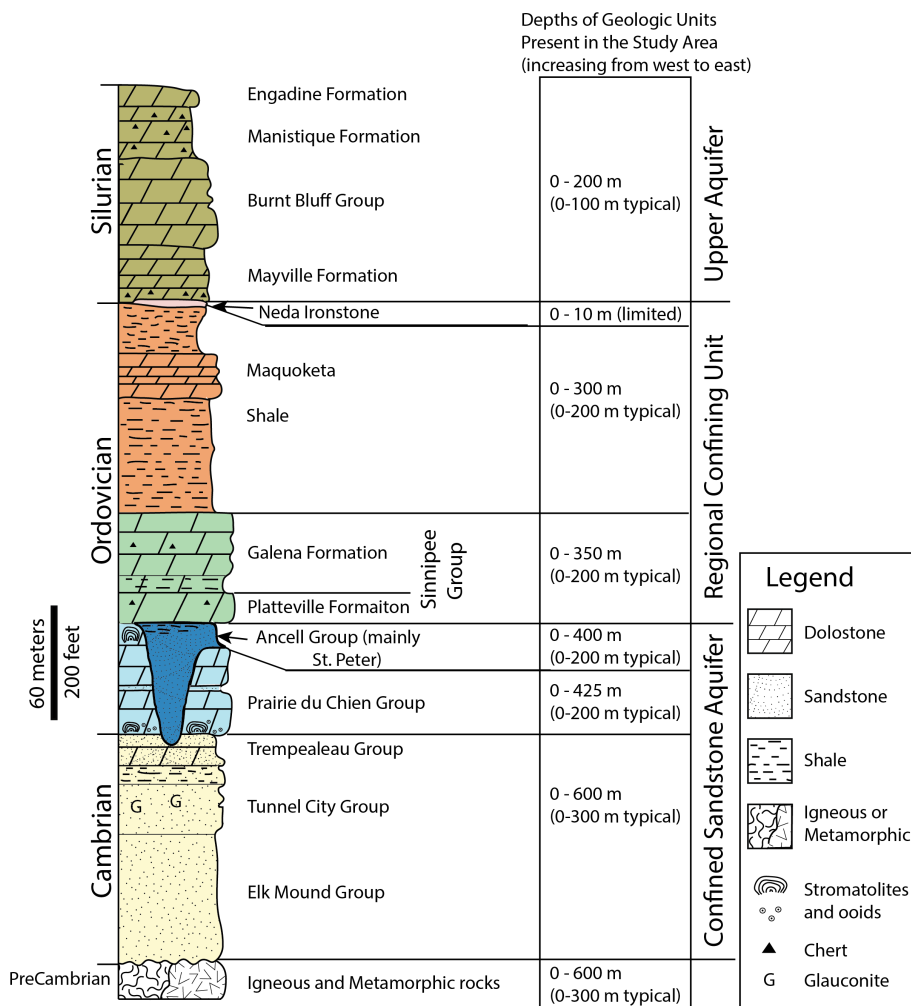


**Table S3.** Wells in the central Brown County portion of the Northeast GMA that reported static water level elevations below the top of the confined aquifer at some point between 2005 and 2016.

Municipality	Well Number and Identifier <sup>1</sup>	Top of Confined Aquifer <sup>2</sup>	Lowest Potentiometric Surface Elevation (m)
De Pere	Well #3; BF185	132.0 m	90.5 m
De Pere	Well #5; BF187	111.9 m	97.8 m
De Pere	Well #6; BF188	136.5 m	102.4 m
Ashwaubenon	Well #4; BF208	137.1 m	97.5 m
Ashwaubenon	NRRM-1; BN-0435	130.5 m	<< 129.5 m

<sup>1</sup> Values are either Wisconsin Unique Well Number or WGNHS unique well identifier. <sup>2</sup>Elevation of the top of the confined Cambrian-Ordovician sandstone aquifer in meters above sea level.



**Figure S3.** Simplified stratigraphic column for Paleozoic bedrock in northeastern Wisconsin, USA (modified from [18]). Pleistocene sediments are not shown here for simplicity, but range in thickness from 0 to 100 m in the Northeast GMA.