

Metamorphic Conditions and Raman Spectroscopic Carbonaceous Material Thermometry of Host Schists of Olympiada and Eldorado Gold Deposits (Yenisey Ridge, Russia)

Vasiliy Sukhorukov ^{1,2,*}, Valeriya Volkova ¹, Peter Nevolko ^{1,2} and Pavel Kozlov ³

¹ Sobolev Institute of Geology and Mineralogy, Siberian Branch of Russian Academy of Sciences, Koptugaav. 3, 630090 Novosibirsk, Russia

² Department of Geology and Geophysics, Novosibirsk State University, Pirogova str. 2, 630090 Novosibirsk, Russia

³ Zavaritskii Institute of Geology and Geochemistry, Ural Branch of the Russian Academy of Sciences, 7 per. Pochtovii, Ekaterinburg 620151, Russia

* Correspondence: svp@igm.nsc.ru

Supplementary Materials

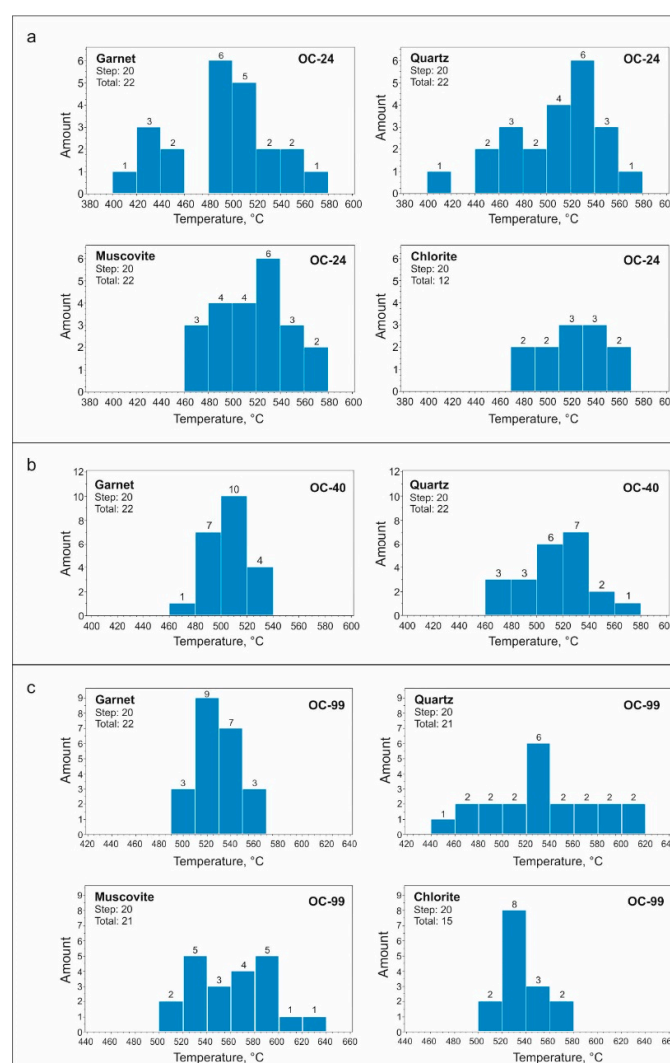


Figure S1. Distribution histograms of temperatures estimated with carbonaceous material thermometry [3] for different mineral phases. **a**—OC-24, **b**—OC-40, **c**—OC-99.

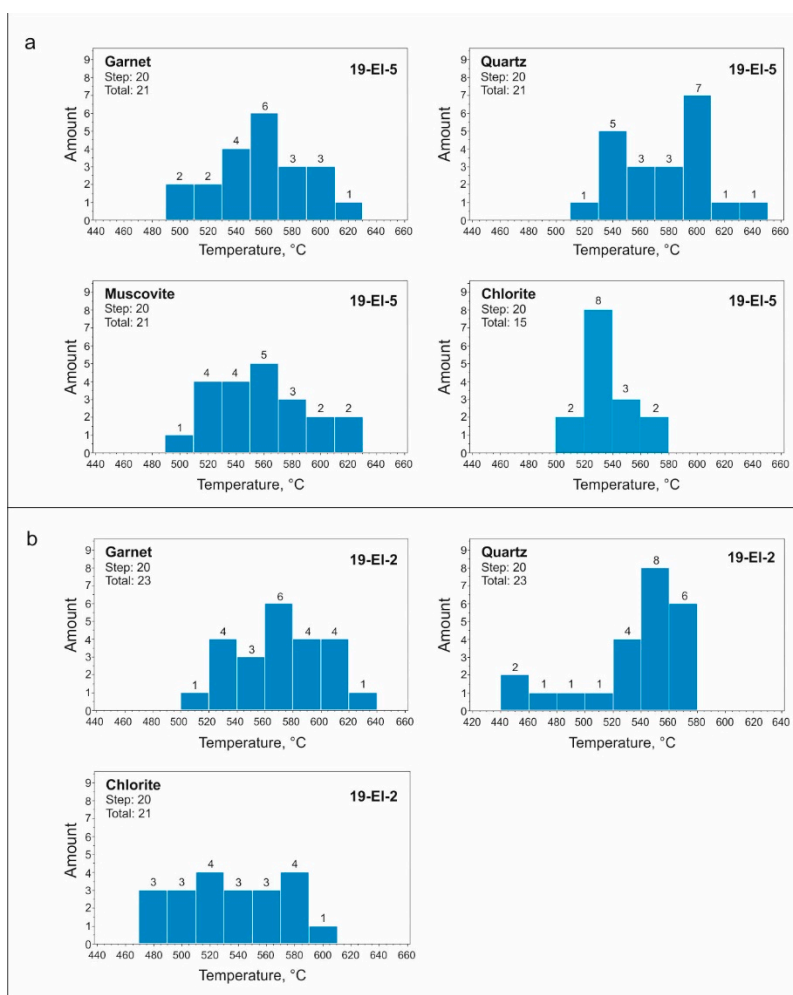


Figure S2. Distribution histograms of temperatures estimated with carbonaceous material thermometry [3] for different mineral phases. **a**—19-EI-5, **b**—19-EI-2.