

Supplementary Figures

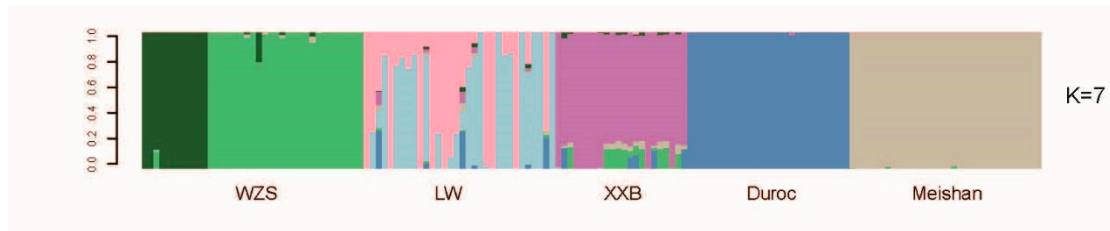


Figure S1. The optimal number $K=7$ of the population structure

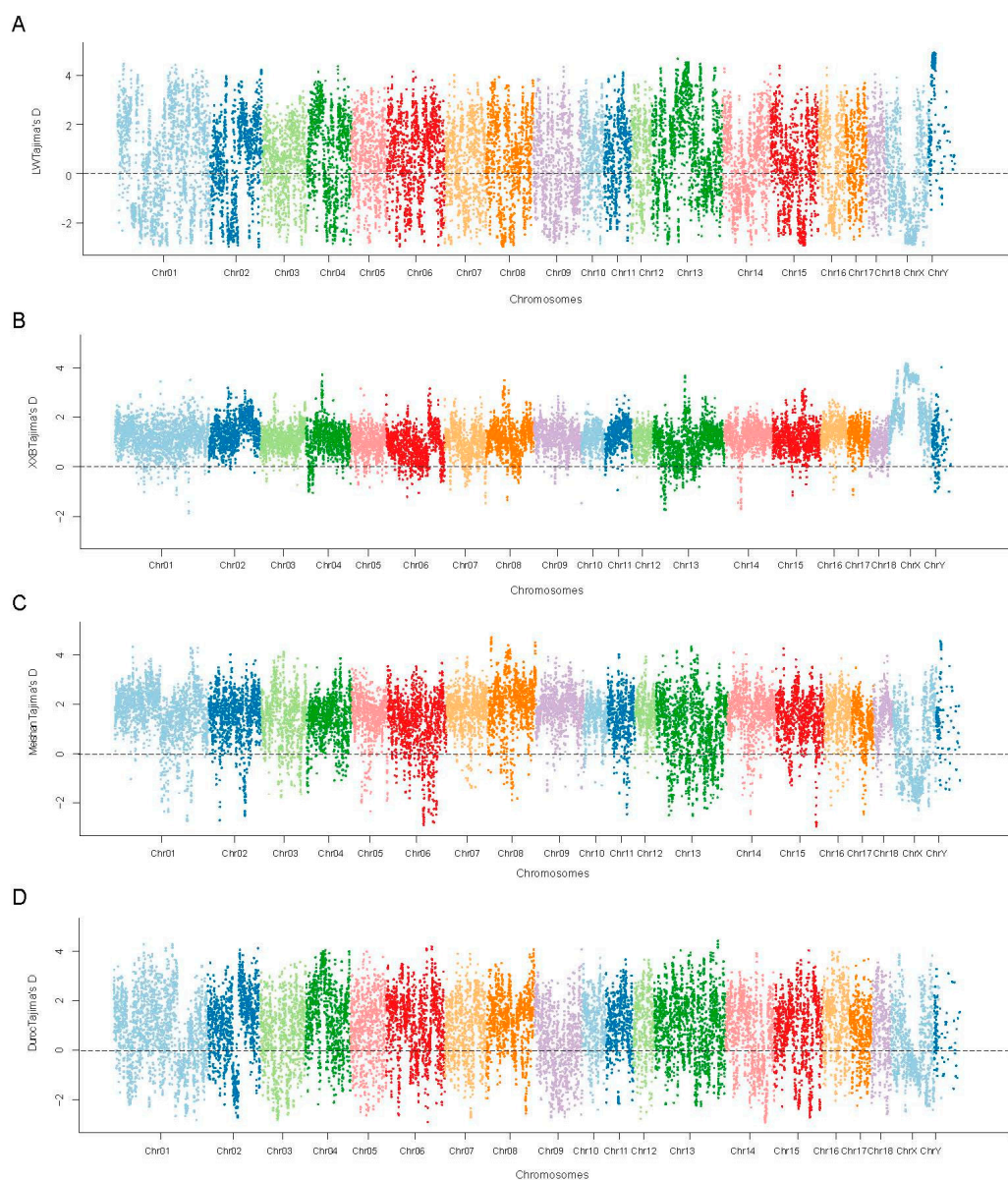


Figure S2. The Tajima's D distribution on the chromosomes of four pig populations. (A) LW. (B) XXB. (C) Meishan. (D) Duroc.

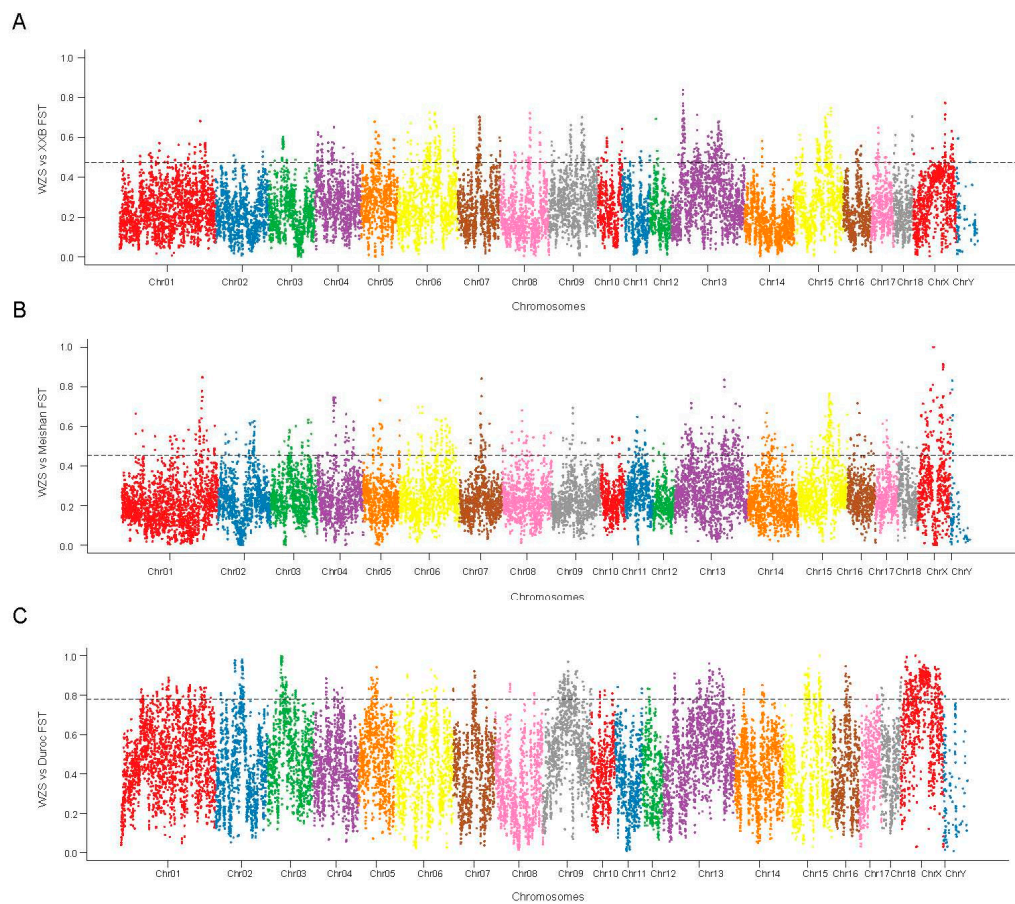


Figure S3. The F_{ST} distribution on the chromosomes between WZS pigs and other pigs. **(A)** WZS and XXB. **(B)** WZS and Meishan. **(C)** WZS and Duroc.

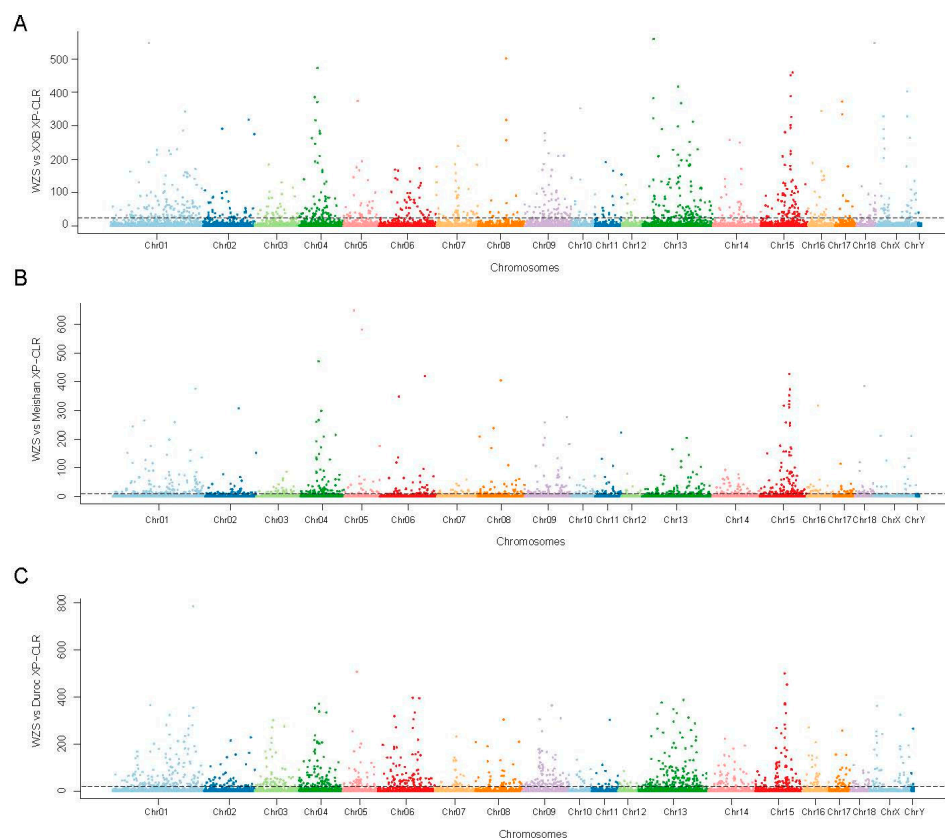


Figure S4. The XP-CLR distribution on the chromosomes between WZS pigs and other pigs. **(A)** WZS and XXB. **(B)** WZS and Meishan. **(C)** WZS and Duroc.

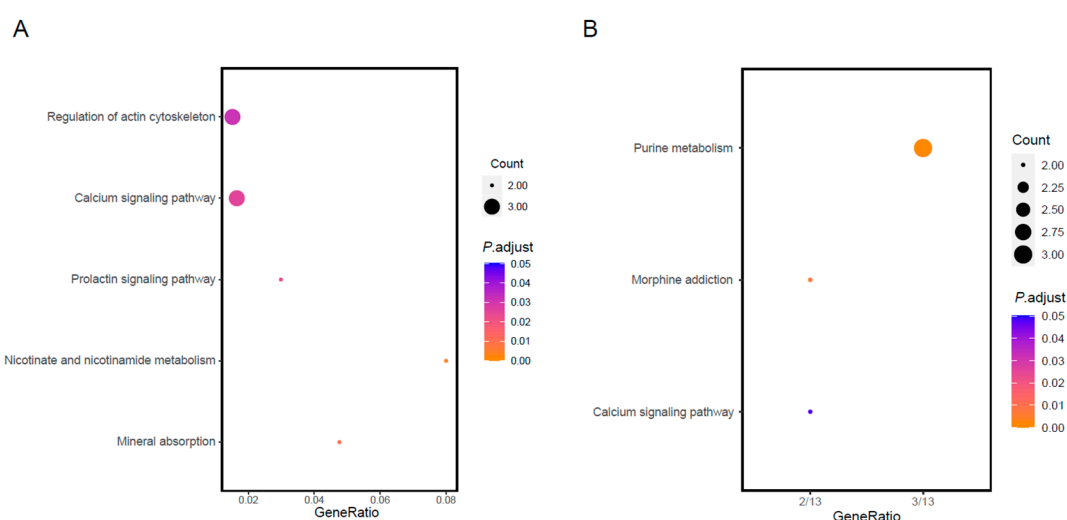


Figure S5. The KEGG enrichment of the top 5% genetic area between WZS and other pigs. **(A)** WZS and Meishan. **(B)** WZS and Duroc.