

Figure S1. PCR amplified *cox I* DNA. 1; molecular marker, 2; control negative (PCR water), 3; *Hyalomma kumari* *cox I*, 4; control positive (*Hyalomma anatolicum* *cox I*).



Figure S2. PCR amplified 16S rDNA. 1; molecular marker, 4; control negative (PCR water), 2-3,5-7; *Hyalomma kumari* 16S rDNA, 8; control positive (*Hyalomma anatolicum* 16S rDNA).



Figure S3. PCR amplified ITS-2 DNA. 1; molecular marker, 5; control negative (PCR water), 2-3; *Hyalomma kumari* ITS-2 DNA, 4; control positive (*Hyalomma anatolicum* ITS-2).



Figure S4. PCR amplified Rickettsial *ompA*. 1; molecular marker, 4; control negative (PCR water), 2; *Rickettsia conorii ompA*, 3; control positive (*Rickettsia massiliae ompA*).

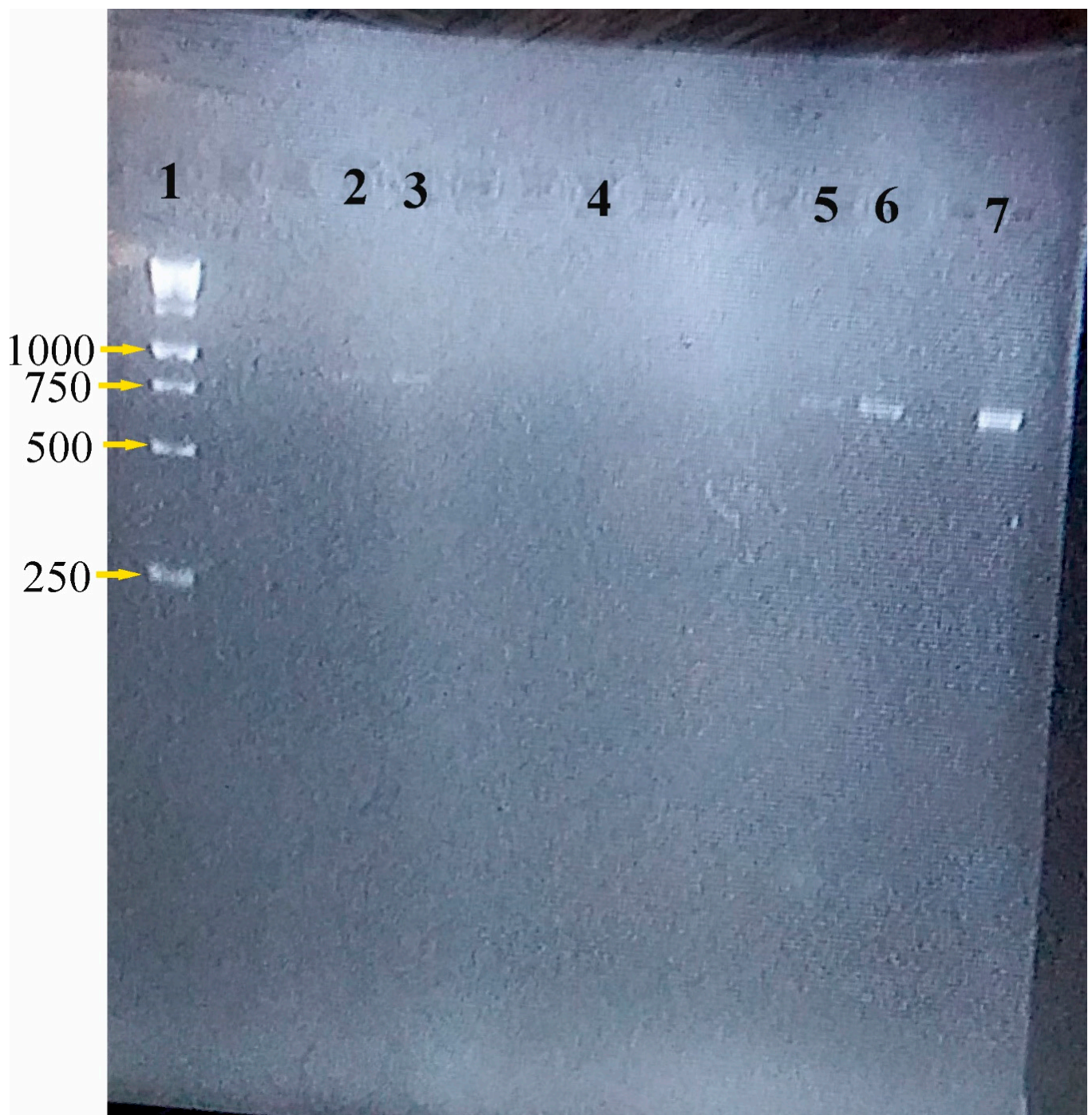


Figure S5. PCR amplified Rickettsial *ompB*. 1; molecular marker, 4; control negative (PCR water), 2-3,5-6; *Rickettsia conorii ompB*, 7; control positive (*Rickettsia massiliae ompB*).



Figure S6. PCR amplified Rickettsial *gltA*. 1; molecular marker, 4; control negative (PCR water), 2; *Rickettsia conorii gltA*, 3; control positive (*Rickettsia massiliae gltA*).