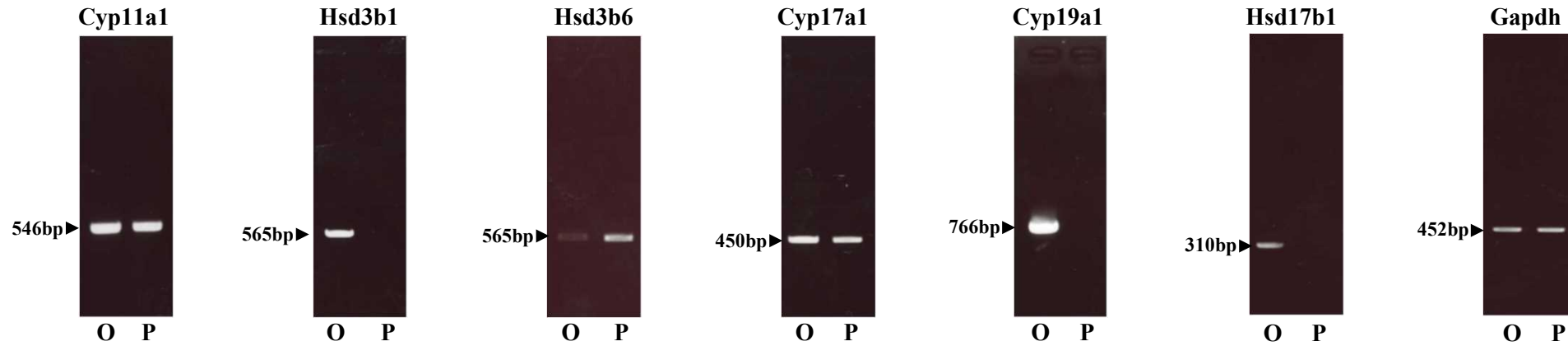


Supplementary Table S1. Primers used in each experiment.

PCR primers	Forward primers	Reverse primers
RT-PCR		
murine Cyp11a1	F- ttccgcttttctttagtccat	R- gtgtctccttgatgctggcttt
murine Hsd3b1	F- actgcaggaggtcagagct	R- gccagtaacacacagaatacc
murine Hsd3b6	F- tctggaggagatcagggtc	R- gcccgtaacaccgagaatatt
murine Cyp17a1	F- aaataataacactggggaaggc	R- tgggtgtgggtgtaatgagatgg
murine Cyp19a1	F- tcaataccaggctcctggcta	R- gtatgcactgattcacgttc
murine Hsd17b1	F- actgtgccagcaagttgcgc	R- aagcggctcgtggagaagtag
murine Gapdh	F- accacagtccatgccatcac	R- tccaccacctgttgctgta
guinea pig Cyp11a1	F- ttgagtcacacacaaatgtca	R- tggcctgaatgttctcatagg
guinea pig Hsd3b	F- atcgtccacttgttggtgaag	R- ctcatgtgttcttgacgat
guinea pig Cyp17a1	F- tgcattgatctgcttcagtgtc	R- tgcattgatctgcttcagtgtc
guinea pig Cyp19a1	F- gcacagcagagaaattggaag	R- caccaggacgactttcatcat
guinea pig Hsd17b1	F- actgtgcaagcaagttgcgc	R- aagcgtcgtgagagaagtag
guinea pig Gapdh	F- accacagtccatgccatcac	R- tccaccacctgttgctgta
ovine CYP11A1	F- gtgtctcaggacttcgtcagc	R- ccatctcgtacaagtgcact
ovine HSD3B1	F- tgggtgtggaggagaaggatctg	R- tgggtaccttcacattgacgttc
ovine CYP17A1	F- tcctgtcagacaacaaaagg	R- cacaaccttcattctttcca
ovine CYP19A1	F- gtccgaagttgtgcctattgcagc	R- cctccaacctgtccagatgctgg
ovine HSD17B1	F- ttgtgcgagagctggtgcattct	R- aggaatcgtcgtggtgaagta
bovine CYP11A1	F- gtgtctcaggacttcgtcagc	R- ccatctcgtacaagtgcatt
bovine HSD3B1	F- tgggtgtggaggagaaggatctg	R- tgggtaccttcacattgacgttc
bovine CYP17A1	F- tcctgtcagacaacaaaagg	R- cacaaccttcattctttcca
bovine CYP19A1	F- aagccttagaggatgatgtc	R- ggtctcgtcgtgatgaagg
bovine HSD17B1	F- ttgtgcgagagctggtgcattct	R- aggaatcgtcgtggtgaagta
bovine GAPDH	F- tgtccagtattgattccacc	R- tccaccacctgttgctgta
human CYP11A1	F- tagtgtctccttgatgctgg	R- gaaaggaagtgttcaccacg
human HSD3B1	F- tggaatctgaaaaacggcggc	R- tgagcttggtccctgtcact
human HSD3B2	F- tggaatctaaaaatggtgat	R- tgggtgtgtccctgttgcc
human CYP17A1	F- gaaggcatcatagacaacctga	R- acattctggtcaatctcctgt
human CYP19A1	F- ctggaagaatgtatggactt	R- gatcatttcagcatgtttt
human HSD17B1	F- atgacgtttattgcgccagc	R- ccggaacgtcgccgaacactt
human β -actin	F- gggaaatcgtgcgtgacattaag	R- tgtgttggtgacaggtctttg
Bisulfite		
ovine HSD17B1	F- gatataataaagggtgggga	R- ataataataaccactatac

(A) mouse



(B) Guinea pig

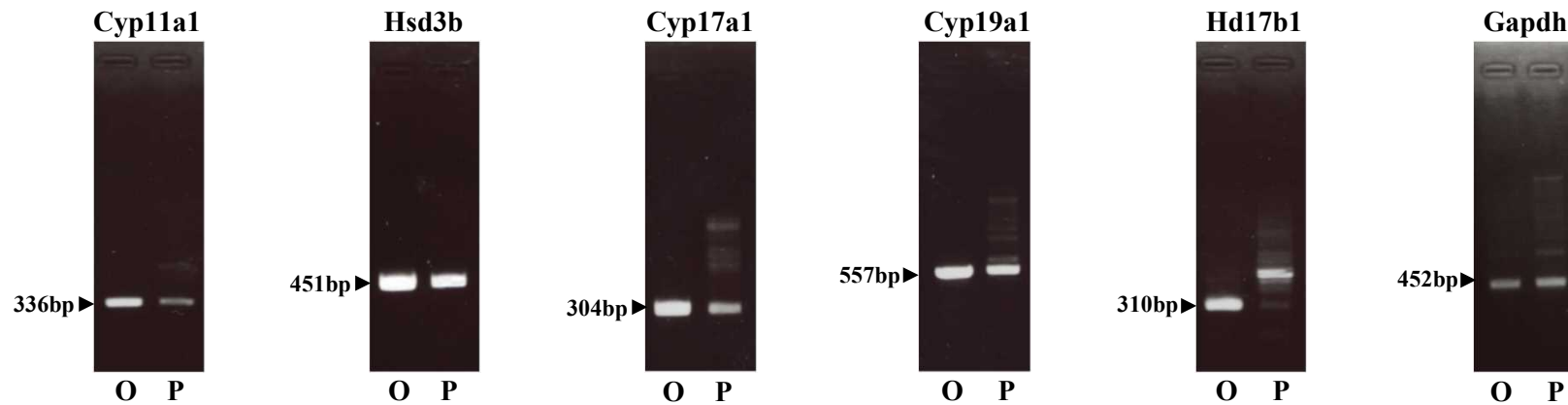
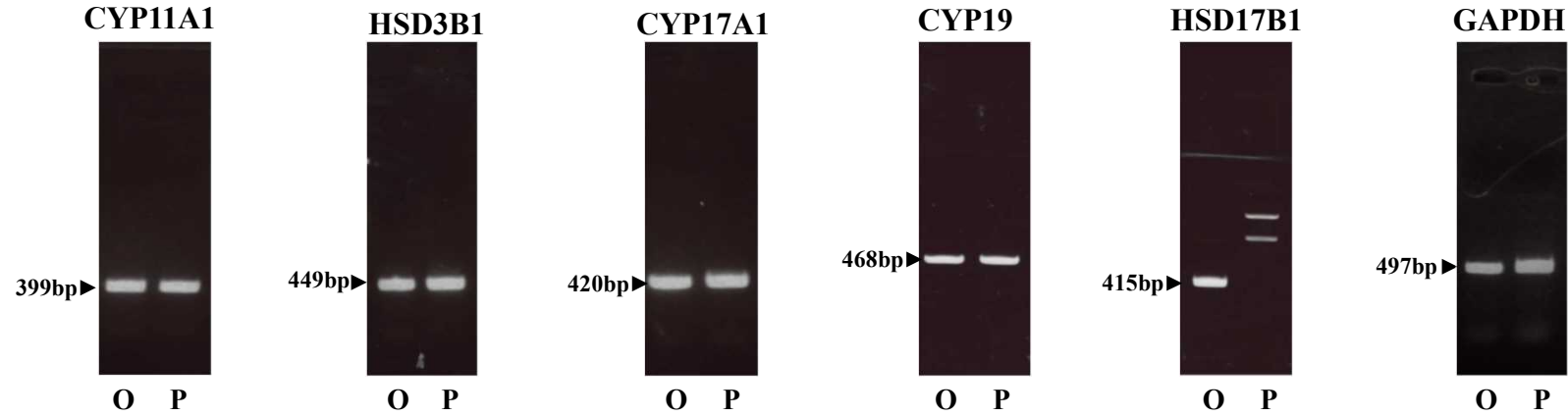


Figure S1. The whole images of RT-PCR analyses in Figure 2.
Lanes O and P represent an ovary and placenta, respectively.

(C) Porcine



(D) Ovine

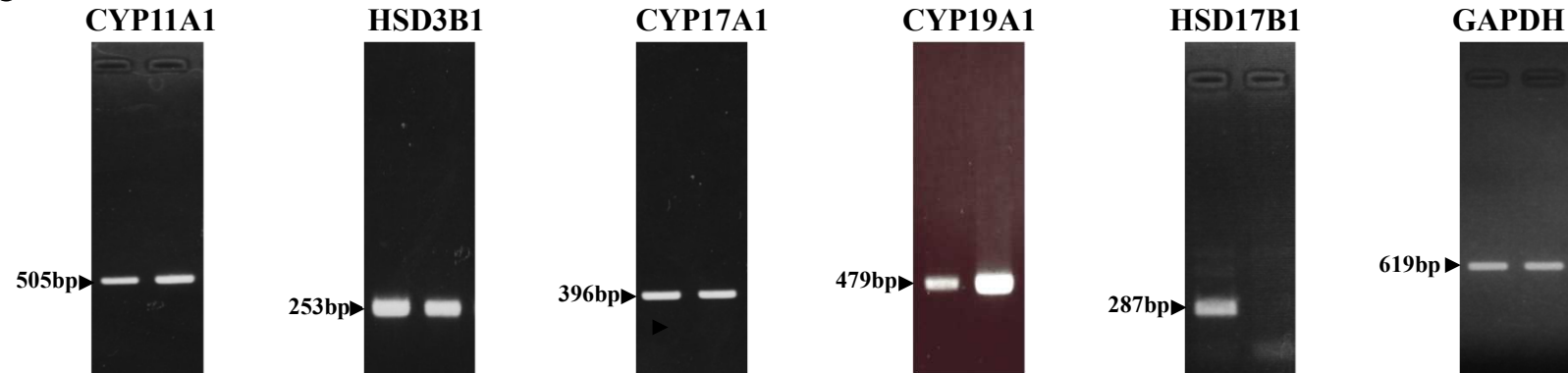
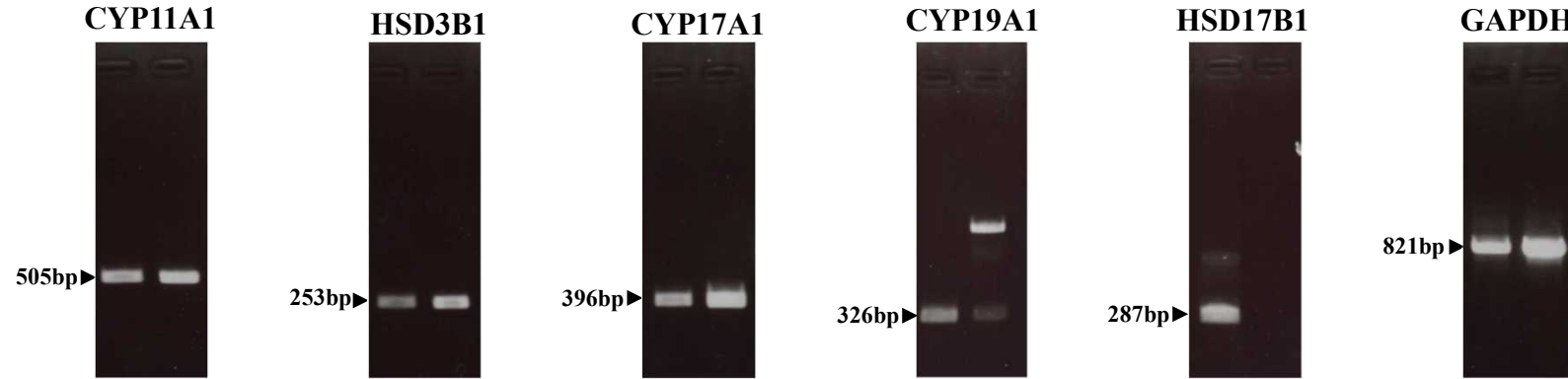


Figure S1. The whole images of RT-PCR analyses in Figure 2 (continued).
Lanes O and P represent an ovary and placenta, respectively.

(E) Bovine



(F) human

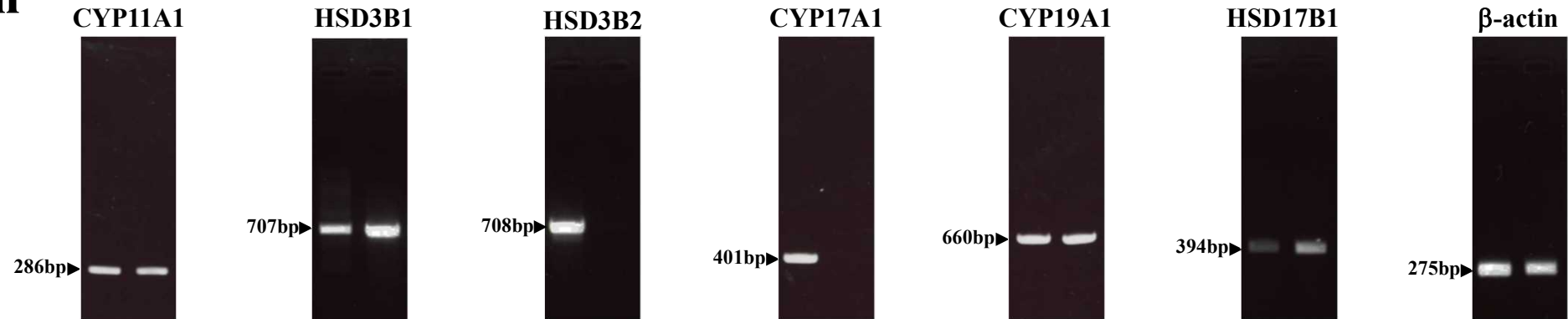


Figure S1. The whole images of RT-PCR analyses in Figure 2 (continued).
Lanes O and P represent an ovary and placenta, respectively.

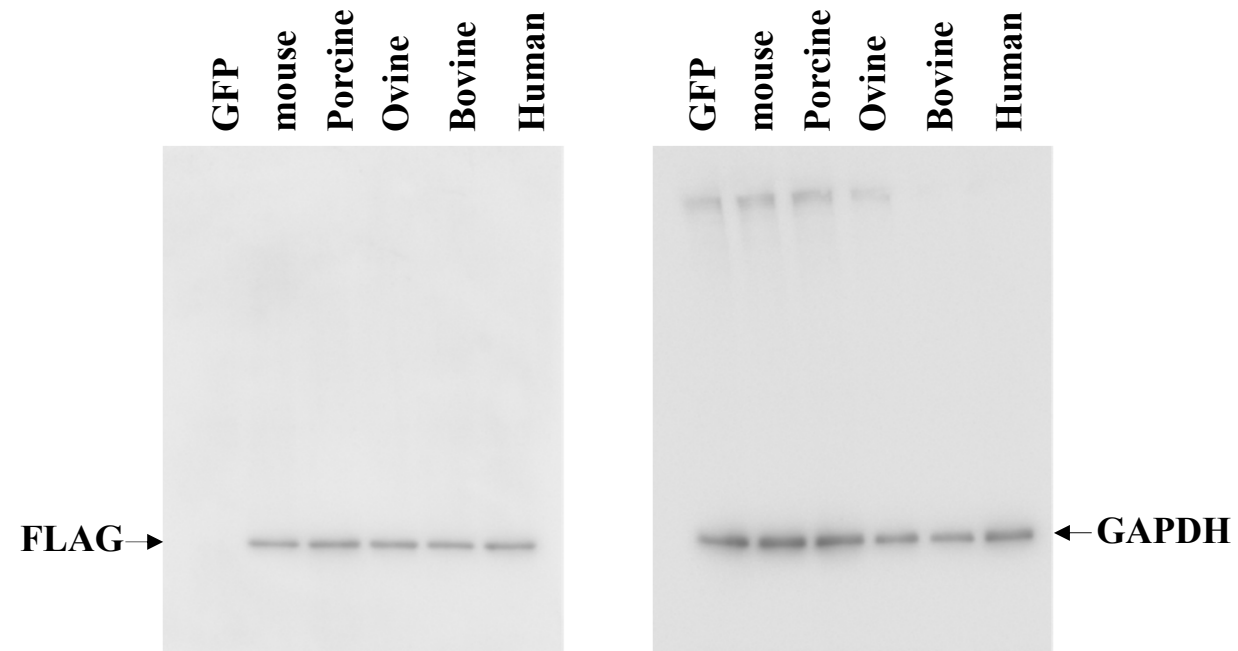


Figure S2. The whole images of western blot analyses in Figure 4(A).