

Figure S1. Original Western blot figures of Figure 2. (A) rEtROP17 was probed with mouse anti-His tag monoclonal antibody. (B) rEtROP17 was probed with chicken anti-*E. tenella* serum. (C) rEtROP17 was probed with normal chicken serum.

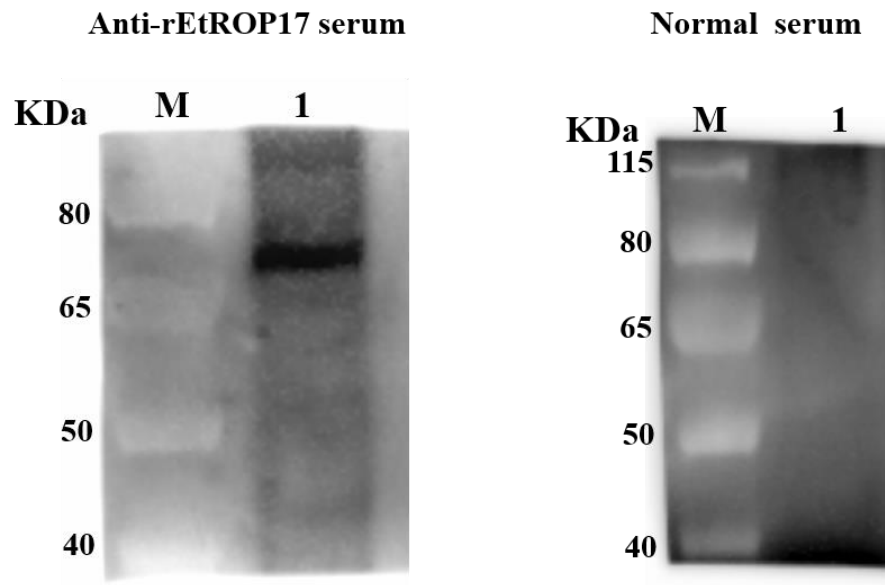


Figure S2. Original Western blot figures of Figure 3. Western blot analysis of protein extracts of merozoites, using mouse anti-rEtROP17 serum and normal mouse serum, respectively.