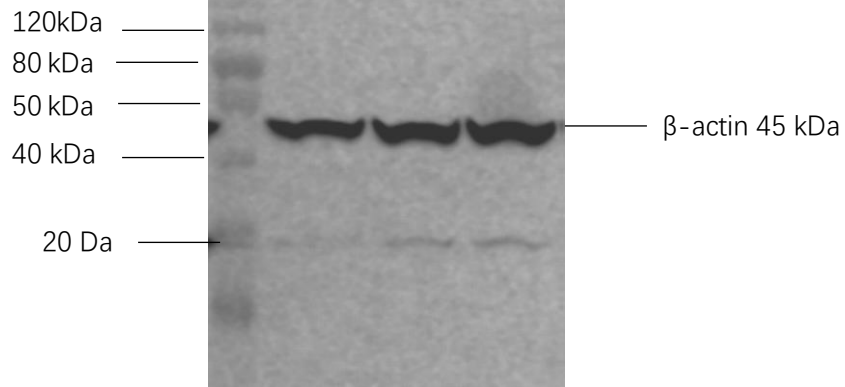
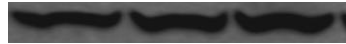
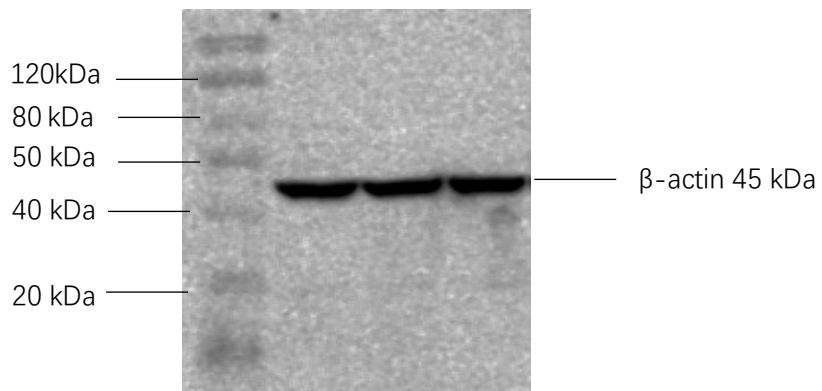


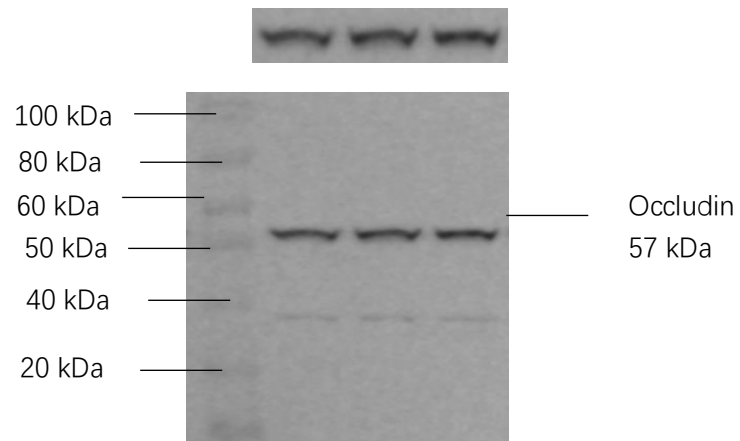
Jejunum  $\beta$ -actin



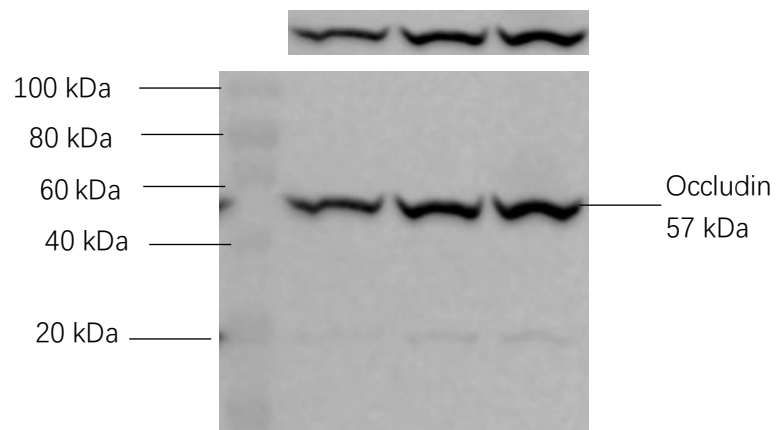
Ileum  $\beta$ -actin



Jejunum Occludin 57 kDa



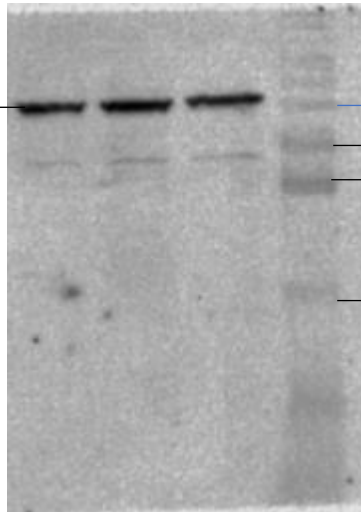
Ileum Occludin 57 kDa



Jejunum ZO-1



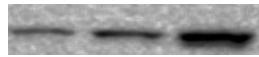
ZO-1  
220 kDa



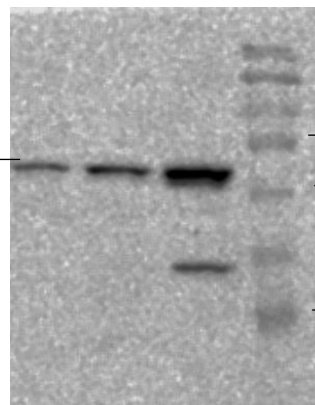
200 kDa  
120 kDa  
80 kDa

50 kDa

Ileum ZO-1



ZO-1  
220 kDa



200 kDa  
120 kDa  
80 kDa  
50 kDa