

Supplementary Materials: The following are available online at www.mdpi.com/xxx/s1, Figure S1: Calibration curves used in the MTT assay: (a) calibration curve used to establish the relationship between absorbance and the amount of MSCs in growth conditions ($r^2 = 0.96$) and (b) calibration curve used to establish the relationship between absorbance and the amount of MSCs in neurogenic conditions ($r^2 = 0.98$). Figure S2: Calibration logarithmic curve used to evaluate the sensitivity of PrP^{Sc} detection of the EEB-Scrapie HerdCheck kit, where $y = 0.626\ln(x) + 0.4023$ and $r^2 = 0.9911$. Figure S3: Full Western blotting membranes used for PrP^{Sc} determination in oBM-MSCs (BM1, BM2, BM3) infected with scrapie inocula at passages 1 to 3 (P1, P2, P3). MWSC = molecular weight marker; C (+) = positive control.

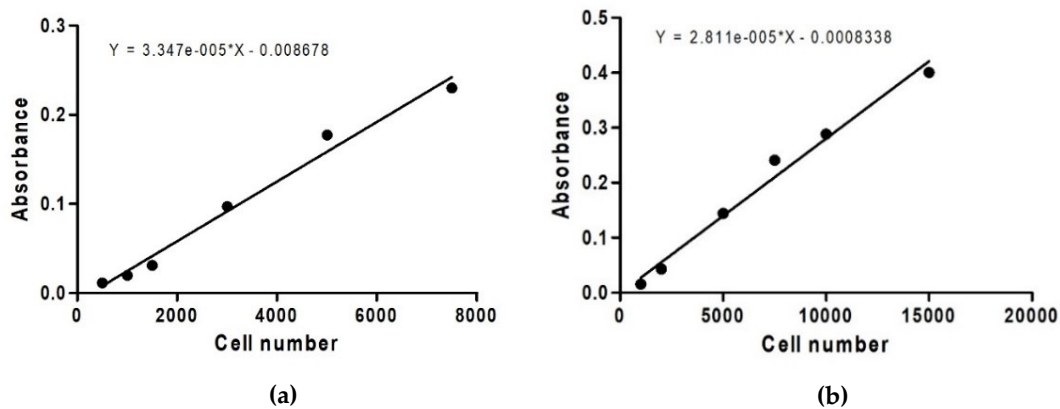


Figure S1. Calibration curves used in the MTT assay: a) calibration curve used to establish the relationship between absorbance and the amount of MSCs in growth conditions ($r^2 = 0.96$) and b) calibration curve used to establish the relationship between absorbance and the amount of MSCs in neurogenic conditions ($r^2 = 0.98$).

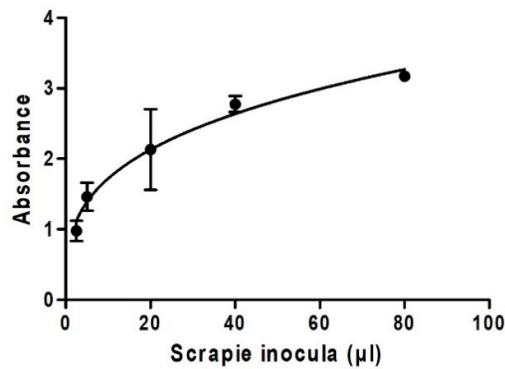
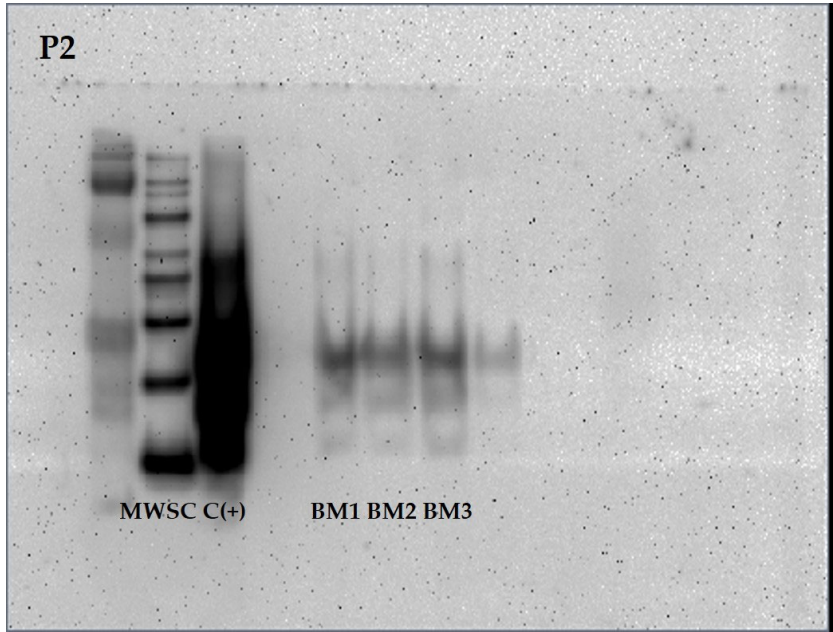
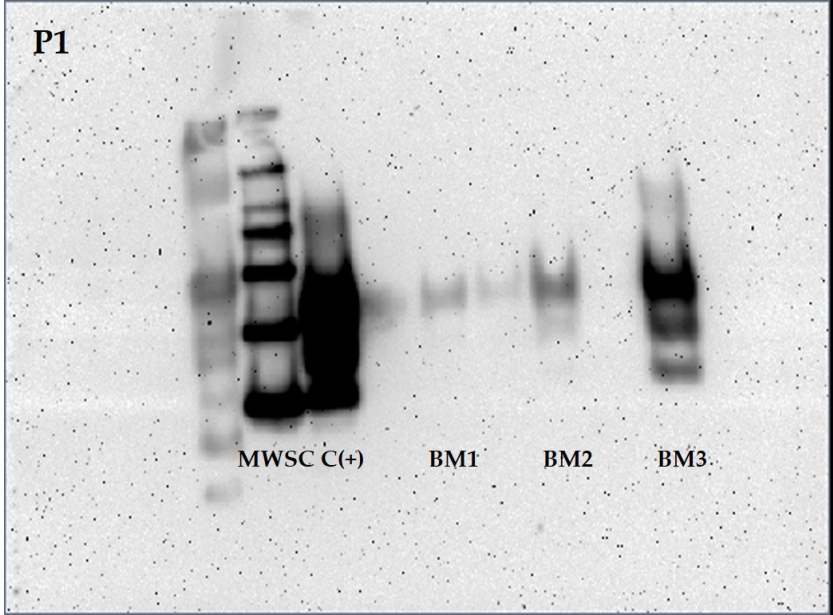


Figure S2. Calibration logarithmic curve used to evaluate the sensitivity of PrP^{Sc} detection of EEB-Scrapie HerdCheck kit, where $y = 0.626\ln(x) + 0.4023$ and $r^2 = 0.9911$.



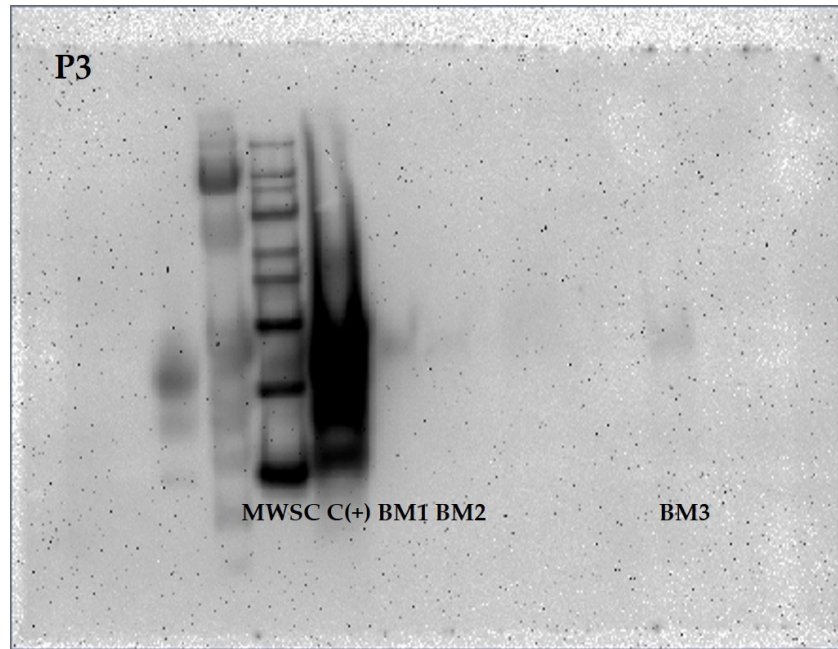


Figure S3. Full Western-Blotting membranes of PrP^{Sc} determination in oBM-MSCs (BM1, BM2, BM3) infected with scrapie inocula at passages 1 to 3 (P1, P2, P3). MWSC= Molecular weight marker; C (+) = Positive control.