

Table S1. Primers sequence used for qRT-PCR

Gene ¹		Primer sequence (5'→3')	Accession ID
<i>CYP2E1</i>	F	CGTGGAATGGAGAAGGAAA	NM_000773.4
	R	GGTGATGAACCGCTGAATCT	
<i>CAT</i>	F	GAAGTGTCCCTACCGTGCTCGA	NM_001752.4
	R	CCAGAATATTGGATGCTGTGCTCCAGG	
<i>SOD</i>	F	AATGGACCAGTGAAGGTGTGGGG	NM_000454.5
	R	CACATTGCCCAAGTCTCCAACATGC	
<i>GPX</i>	F	CGGCCCAGTCGGTGTATGC	NM_001329503.2
	R	CGTGGTGCCTCAGAGGGAC	
<i>SREBP1c</i>	F	CGGAGCCATGGATTGCACT	NM_001005291.3
	R	TAGGCCAGGGAAGTCACTG	
<i>FAS</i>	F	TCGTGGGCTACAGCATGGT	NM_004104.5
	R	GCCCTCTGAAGTCGAAGAAGAA	
<i>PPARα</i>	F	CAAACCTGGACCTGAACGAT	NM_001362873.2
	R	GAACGGTTTCCTTAGGCTTT	
<i>CPT1</i>	F	TTTCCTTGCTGAGGTGCTCT	NM_004377.4
	R	TCTCGCCTGCAATCATGTAG	
<i>ACO</i>	F	TCTGTTGACCTTGTTGAGCAA	NM_001185039.2
	R	CAAGCACAGAGCCAAGTGTCAC	
<i>GAPDH</i>	F	ACCCACTCCTCCACCTTTG	NM_001357943.2
	R	CTCTTGCTCTTGCTGGG	

¹ *CYP2E1*, Cytochrome P450 2E1; *CAT*, catalase; *SOD*, superoxide dismutase; *GPX*, glutathione peroxidase; *SREBP1c*, sterol regulatory element-binding protein 1; *FAS*, fatty acid synthase; *PPARα*, peroxisome proliferator-activated receptor alpha; *CPT1*, carnitine palmitoyltransferase 1; *ACO*, acyl-CoA 1; *GAPDH*, glyceraldehyde 3-phosphate dehydrogenase.

Table S2. The minimum inhibitory concentrations (MIC) cut-off value from EFSA.

Antimicrobials	Microbiological cut-off values ($\mu\text{g/mL}$)		
	<i>L. brevis</i>	<i>L. fermentum</i>	<i>L. reuteri</i>
Ampicillin	2	2	2
Gentamicin	16	16	8
Kanamycin	64	64	64
Streptomycin	64	64	64
Tetracycline	8	8	32
Chloramphenicol	4	4	4
Erythromycin	1	1	1
Vancomycin	n.r. ¹	n.r.	n.r.
Clindamycin	4	4	4

¹ n.r., not required.

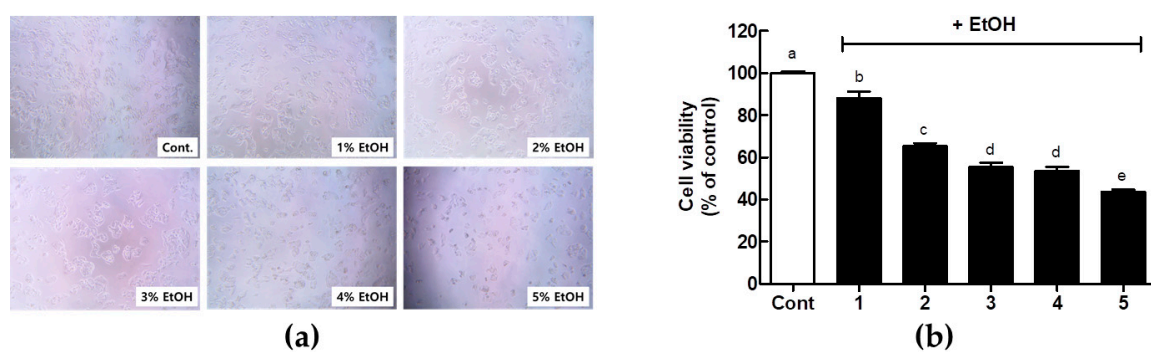


Figure S1. The viability of ethanol (EtOH) on HepG2 cells. The cells were treated with various concentrations of EtOH 1 (1 - 5%) for 24 h. The data was expressed as the mean \pm SD ($n = 3$). Different letters on the column meant significant at $p < 0.05$ based on Duncan's test.

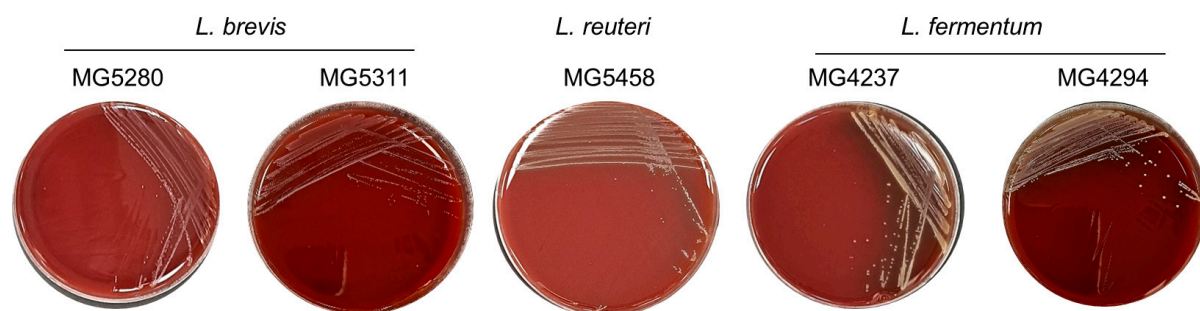


Figure S2. The hemolytic activity of LAB strains.