

## Supplementary Material

# PHA Production from Cheese Whey and “Scotta”: Comparison between a Consortium and a Pure Culture of *Leuconostoc mesenteroides*

Francesca Bosco <sup>1,\*</sup>, Simona Cirrincione <sup>2</sup>, Riccardo Carletto <sup>3</sup>, Luca Marmo <sup>1</sup>, Francesco Chiesa <sup>4</sup>,  
Roberto Mazzoli <sup>2</sup> and Enrica Pessione <sup>2</sup>

<sup>1</sup> Department of Applied Science and Technology, Politecnico di Torino, 10129 Turin, Italy; francesca.bosco@polito.it (F.B.); luca.marmo@polito.it (L.M.)

<sup>2</sup> Structural and Functional Biochemistry, Laboratory of Microbial Biochemistry and Proteomics, Department of Life Sciences and Systems Biology, Università di Torino, 10123 Torino, Italy; simona.cirrincione@ispa.cnr.it (S.C.); roberto.mazzoli@unito.it (R.M.); enrica.pessione@unito.it (E.P.)

<sup>3</sup> CNR-STIIMA, Consiglio Nazionale delle Ricerche- Istituto di Sistemi e Tecnologie Industriali Intelligenti per il Manifatturiero Avanzato, 13900 Biella, Italy; riccardoandrea.carletto@stiima.cnr.it (R.C.)

<sup>4</sup> Department of Veterinary Science (DSV), Università degli Studi di Torino, 10095, Grugliasco-TO, Italy; francesco.chiesa@unito.it (F.C.)

\* Correspondence: francesca.bosco@polito.it; Tel: +39-011-0904696

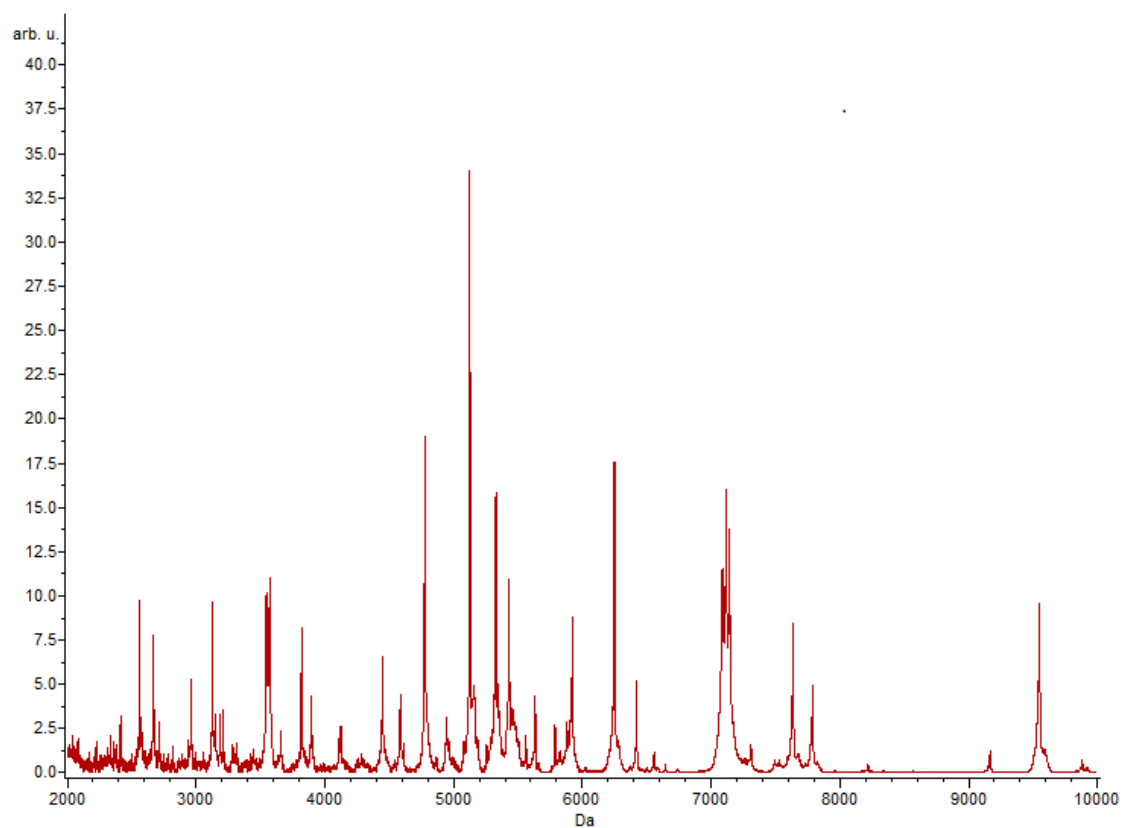


Figure S1. Report of the identification of *Leuconostoc mesenteroides* obtained by means of MALDI Biotyper.