

SUPPLEMENTARY MATERIAL

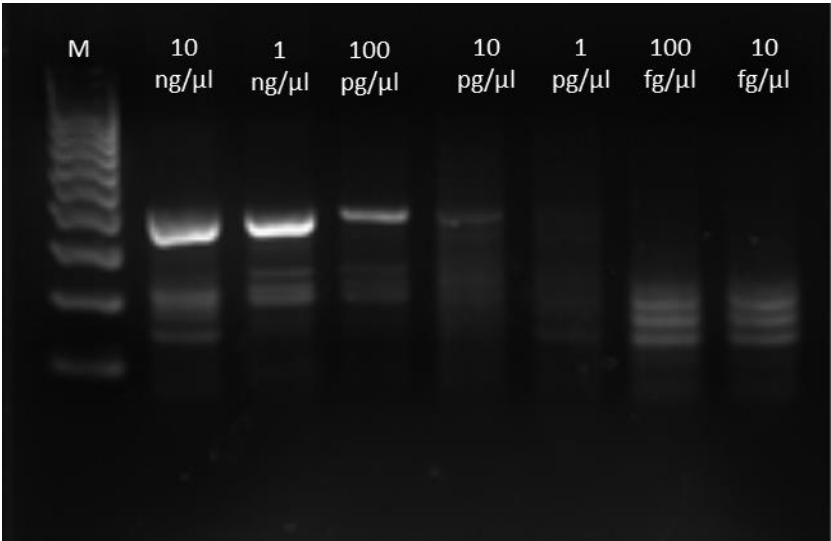


Figure S1: Sensitivity analysis of *B. cenocepacia* J2315 by PMAxx-RPA exo assay with agarose gel electrophoresis. DNA samples (94.3 ng/μl) were spectrophotometrically determined at A260 and using 10-fold serial diluted genomic DNA (approx. 10 ng/μL, 1 ng/μL, 100 pg/μL, 10 pg/μL, 1 pg/μL, and 100 fg/μL) of *B. cenocepacia* J2315.

Table S1. Sequence information of the cluster 3558

No. of cluster	ID	Size	Start	Stop	Sequence	Consensus sequence
3558	1	26	283	309	ACGCTGTCGTCGACGA TCATCAGCCT	ATGCTCTGAAATXATTCCXCTCGGXXXXTGGGTCGACCCXXXCGTXCAXTAXXTXCTXGA XCAXGAXGCXXXXACXTTCGAXXCGXTXGGXCXXGCGATCGAXXGXTXGCXGCXXTX XTCGAXCAXXGXTXCCAGCXXTXCCGATGTGGXTGTGTATGGCXXTCTTCATCGGXXT XGGXXTGTGGCGXTXGGCTGGCGXTTXGCXXTGTXXXXACXXXTCXXTXCTXCTGA TXXTXGCXACXGGTTCTGGGAXCAGACXXTXATXACGCTXGGXCTXACGCTGTCGTC GACGATCATCAGCCTXGXGCTXGGCATXCCGCTCGGCXTCTGGGCXGCXAAGACAA XXGGTXGCXGCXXXXTTCGXCXCGXTXCTXGAXXTGATGCAACGATGCCXGCXTTCGT XTAXCTGATTCCGGCXGCXATGXTGTTCGGXCTXGGXCGXTGCCXGGXATCCTGTCGA CGGTGATCTTCGCGATGCGGCCXGCXGTGCGXTXACGAGCCTXGGXATXCGXCAXG TGAAXCGXGAGATXGTCGAXGCXGGXCAGGCXTTXGGXTGXACGCCXTGGCAXXTXCT XTACAAXGTXCAXTTXCCGAAXGCGXTGCCGTCGATCATGCAAGGXTXAACAGACG ATCATGATGGCGCTGTCGATGGTATCATXGCXTCGATGGTGGXGCXGGCGGXTXG GCAACGAXGTGCTXGCXAGXATCCAGCGXTXGAXATCGGXTXGGXTTCGAXAGCGG XXTGTGCGTGTGTGCTXGCGATCATXCTXGAXCGXATCACCAXAGCTTXXGGXCGXG CXCCXGGXXCXXXXXGCXCCGXTTTCXCGGXTXAAGCAXXTXXTXCGXXXXAA XXXXXXXXXXCAXGCXTXA
	2	32	460	492	ATCCTGTCGACGGTGA TCTTCGCGATGCCGCC	
	3	32	634	666	AACCAGACGATCATG ATGGCGCTGTCGATGG T	