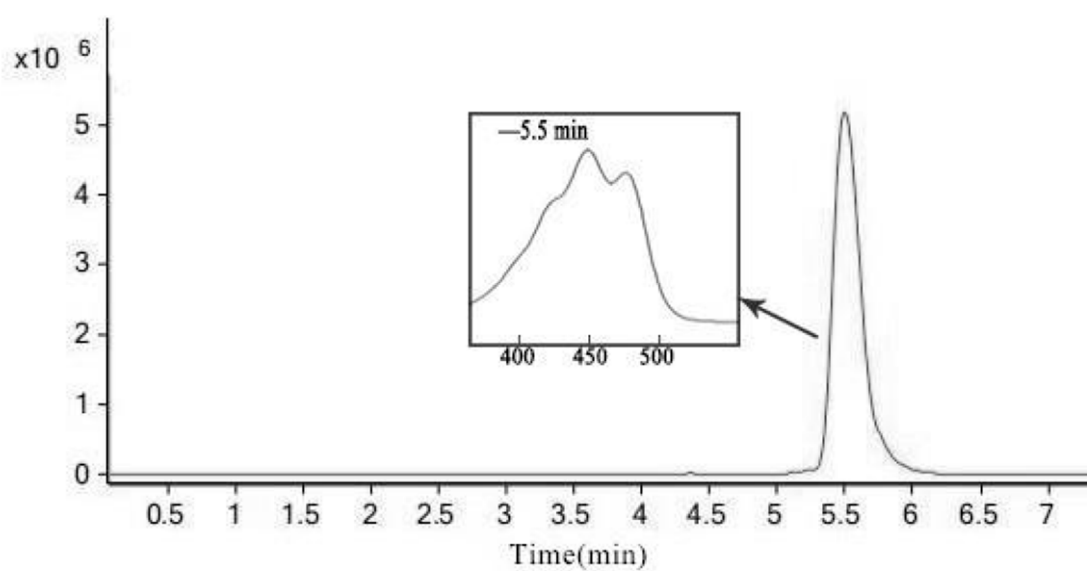
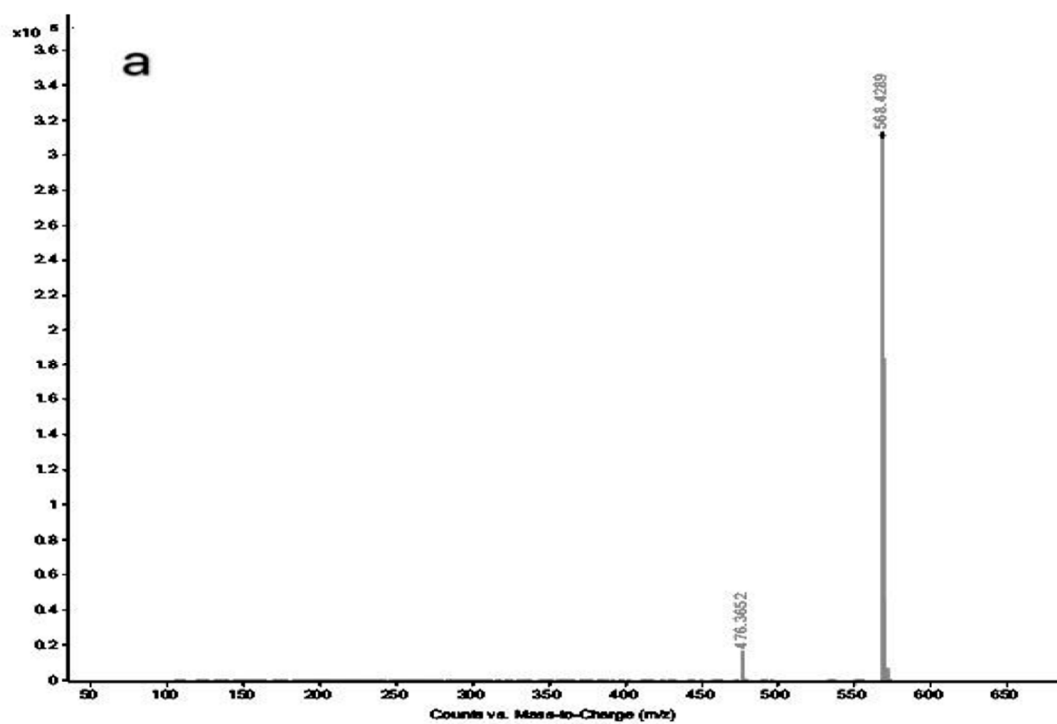


(a)

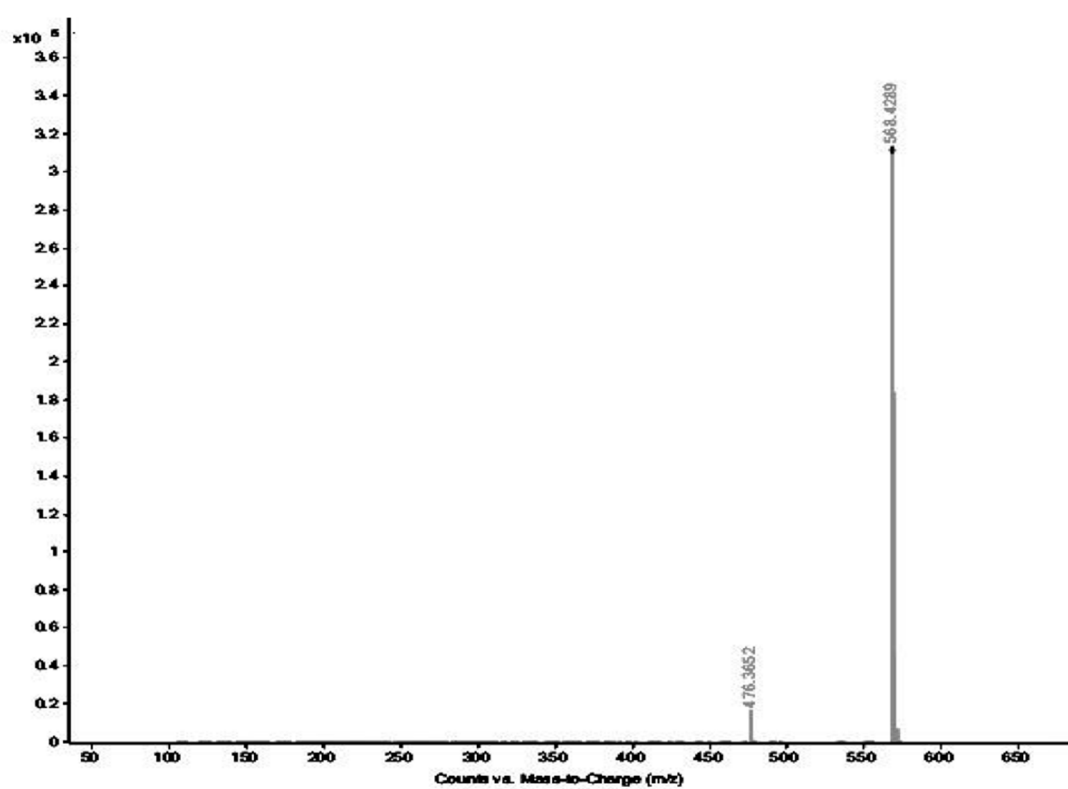


(b)

Figure S6. (a) Peaks and scanning profiles of standard lutein; (b) Peaks and scanning profiles of the extract of *S. morindae* NBD5 on LC-Q-TOF/MS [15].

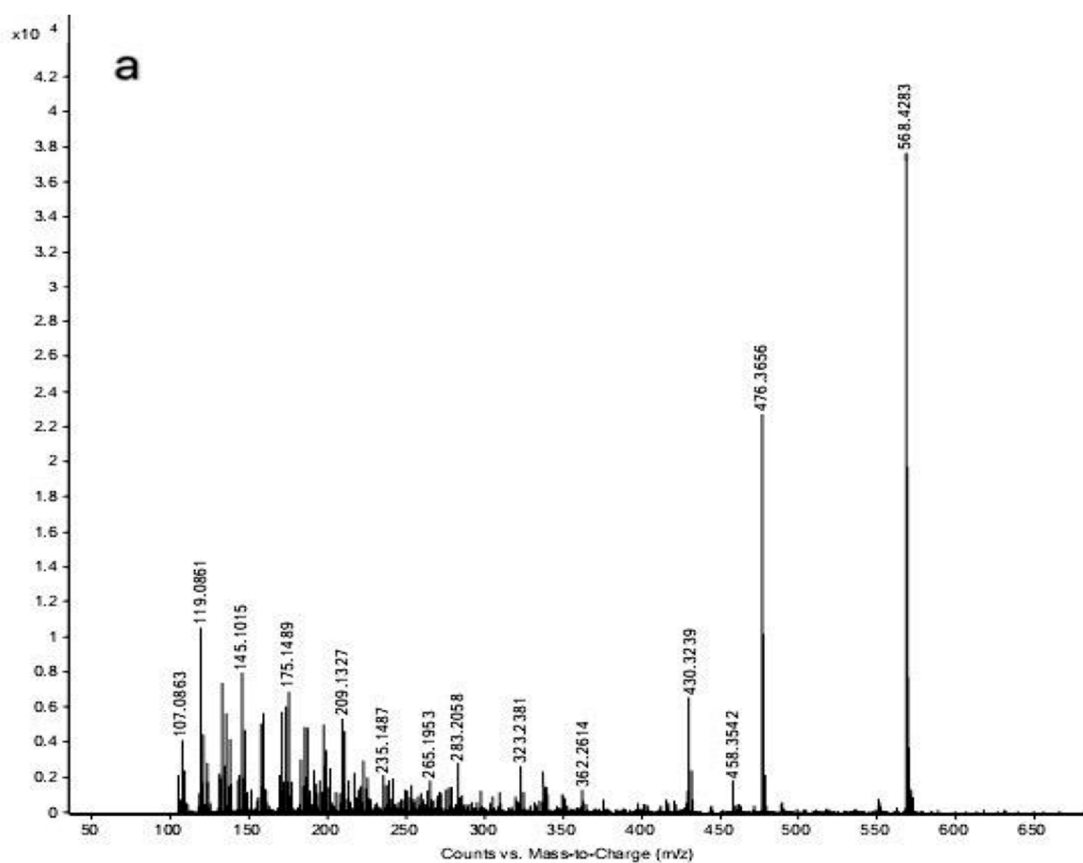


(a)

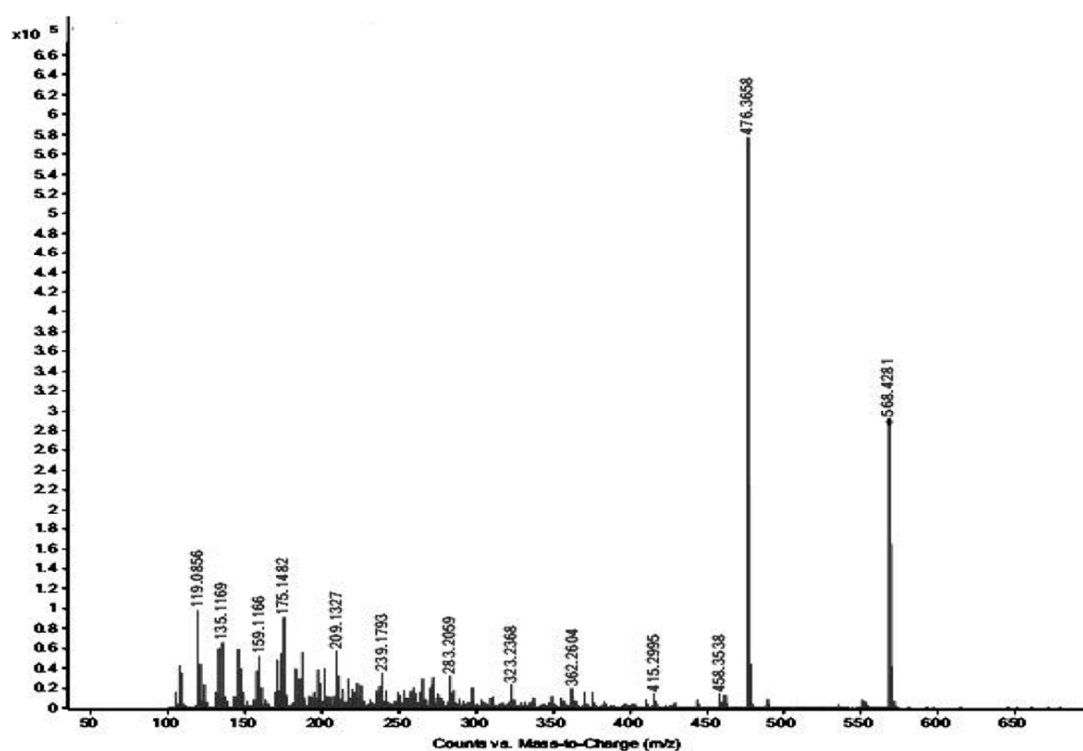


(b)

Figure S7. (a) First-order mass spectrometry of standard lutein on LC-Q-TOF/MS; (b) First-order mass spectrometry of the extract of *S. morindae* NBD5 on LC-Q-TOF/MS [15].



(a)



(b)

Figure S8. (a) Second-order mass spectrometry of standard lutein on LC-Q-TOF/MS; (b) Second-order mass spectrometry of the extract of *S. morindae* NBD5 on LC-Q-TOF/MS [15].

References

15. Wang, J.; Wu, P.; Chen, J.; Yan, H. Biodegradation of microcystin-RR by a new isolated *Sphingopyxis* sp. USTB-05. *Chin. J. Chem. Eng.* **2010**, *18*, 108–112.