

**Supplemental Figure S1:**

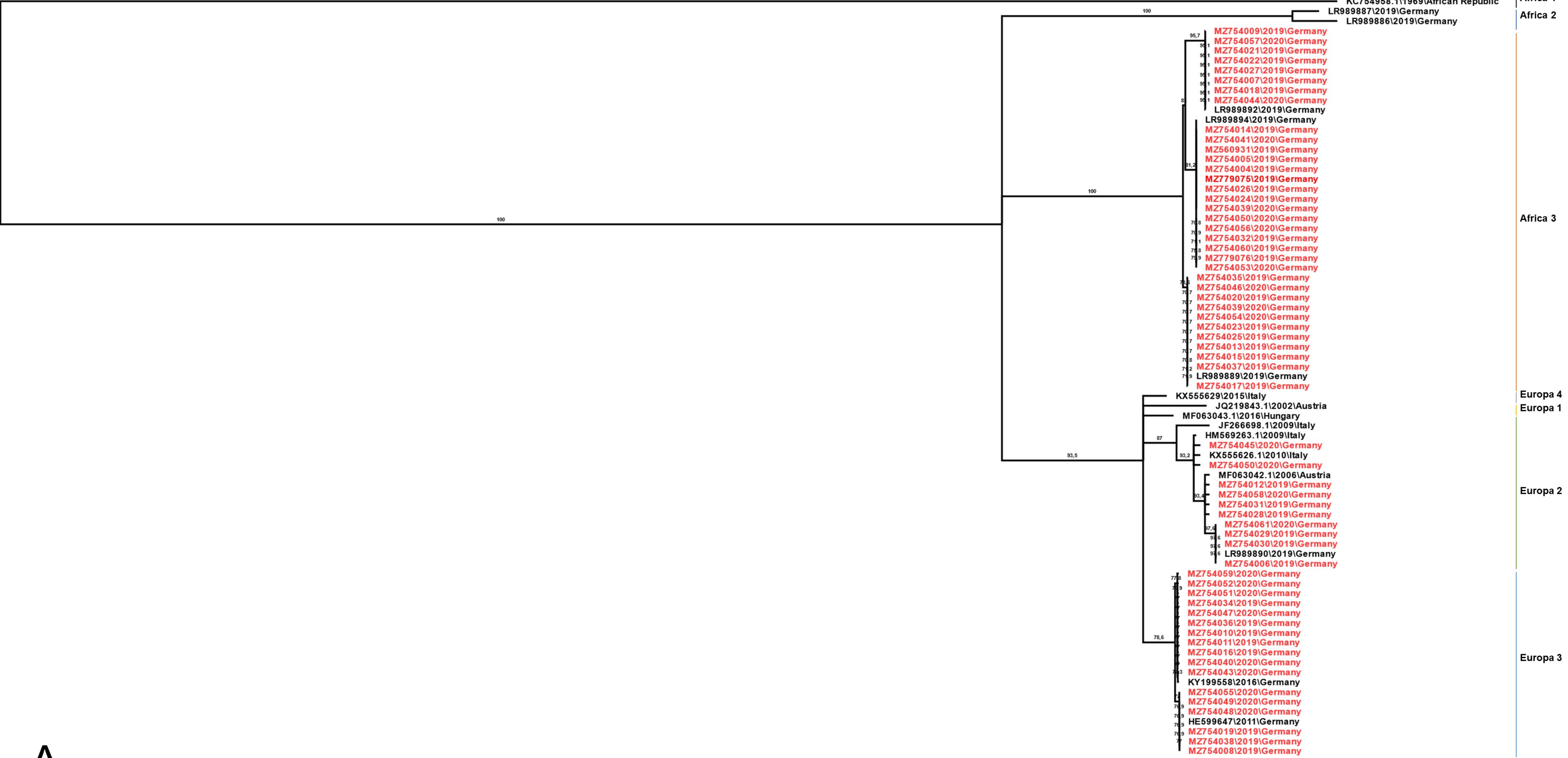
Phylogenetic analysis of USUV strains detected in birds from Germany in 2019 and 2020.

**A)** Partial envelope genome nucleotide sequences (1200 bp) sequenced by the Friedrich Loeffler Institute.

**B)** Partial nucleotide sequences for the envelope protein (800 bp) sequenced by the University of Leipzig.

Sequences are labeled by codes containing the GenBank accession number, year of sample collection and country of origin. The sequences from Germany described in this paper are highlighted in red.







B.

