

Table S1. Primer sequence used in this study.

Origin	Gene ¹	Sequence (3'→5')	
		Forward	Reverse
Human	<i>MMP-1</i>	GCATATCGATGCTGCTCTTTC	GATAACCTGGATCCATAGATCGTT
	<i>MMP-3</i>	CAAAACATATTTCTTTGTAGAGGACAA	TTCAGCTATTTGCTTGGGAAA
	<i>GAPDH</i>	ACCCACTCCTCCACCTTTG	ACCCACTCCTCCACCTTTG
Mouse	<i>IL-6</i>	GAGACTTCCATCCAGTTGCCT	TGGGAGTGGTATCCTCTGTGA
	<i>TNF-</i>	TGTCTACTCCTCAGAGCCCC	TGAGTCCTTGATGGTGGTGC
	<i>GAPDH</i>	TCTCCCTCACAATTCCATCC	GGGTGCAGCGAACTTTATTG

¹*MMP*, matrix metalloproteinase; *IL*, interleukin; *TNF*, tumor necrosis factor; *GAPDH*, glyceraldehyde 3-phosphate dehydrogenase.

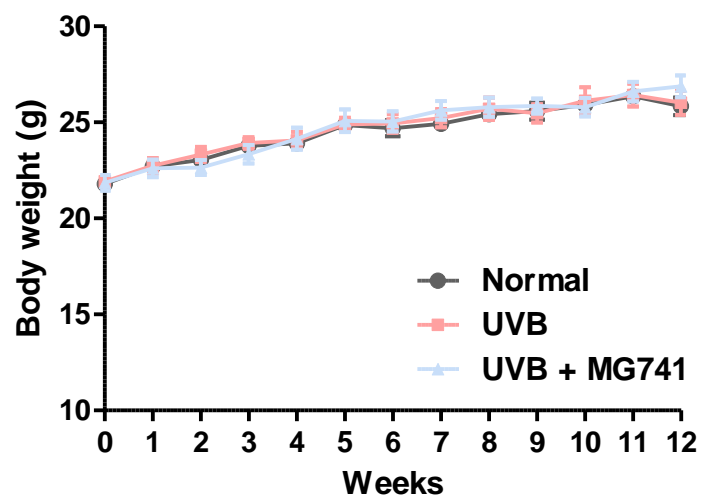


Figure S1. Body weight change against administration of *Bi. lactis* MG741 in UVB-exposed HR-1 mice. Data indicated mean \pm SEM ($n = 6$).

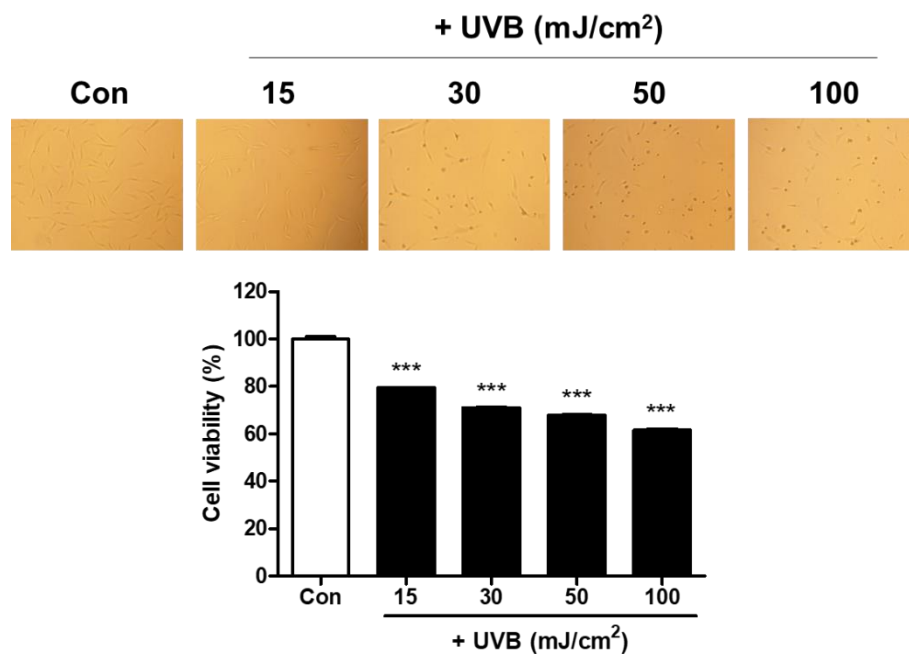


Figure S2. Cell morphology and viability against UVB treatment on Hs68 cells. UVB (15, 30, 50 and 100 mJ/cm²) exposed Hs68 cells, for 24 h. The data indicated mean \pm SEM in triplicate. Statistical differences are showed with *** $p < 0.001$ compared to control (non-expose UVB).