

Supplementary Information

Manuscript ID: actuators-1556171

Title: Paper-based cantilever beam mini actuator using hygro-thermal response.

Authors: Ireta-Muñoz Laura Alejandra , Cueva-Perez Isaias, Saucedo-Dorantes Juan José and Pérez-Cruz Angel,*

Current control

The design of a current control to supply at mini actuator was performance following the diagram show in figure S1. Where current control was designed through the value selection to Resistance 1 (R1) which was settled at 1.8 Ohm to deliver a current of 542 mA. This value changed because of the sample resistance added in series with R1.

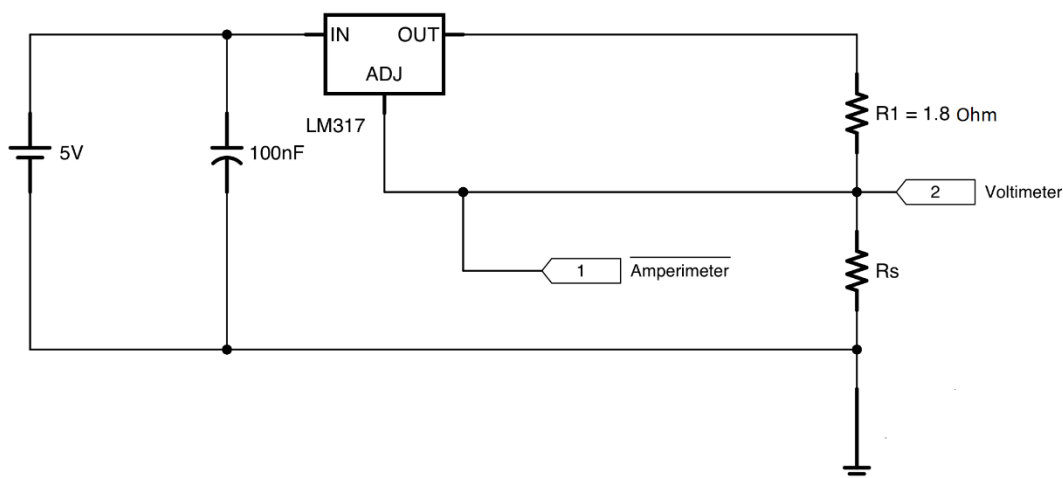


Figure S1. Current Control Diagram.