

Table S1. Sex of peccaries, body weight, parasites and hemopathogens, individually identified.

Animal Identification	Sex	Body weight (kg)	Ectoparasite	Hemopathogen	Fecal sample
1	M	21		<i>Trypanosoma evansi</i>	Strongylida, <i>Ascaris suum</i>
2	M	18		<i>Leishmania braziliensis</i> , <i>Mycoplasma</i> sp.	<i>Balantidium</i> sp.
3	F	17.3		<i>T. evansi</i>	Strongylida
4	M	16.1		<i>Mycoplasma</i> sp.	<i>Balantidium</i> sp., Strongylida
5	F	20		Not detected	<i>Balantidium</i> sp., Strongylida
6	F	11.9		<i>L. braziliensis</i> , <i>Mycoplasma</i> sp.	<i>Balantidium</i> sp., Strongylida
7	F	22.3		Not detected	<i>Balantidium</i> sp., Strongylida
8	F	8.7		<i>Mycoplasma</i> sp.	<i>Balantidium</i> sp., Strongylida
9	F	20.8		Not detected	<i>Balantidium</i> sp., Strongylida
10	F	17.2		<i>Mycoplasma</i> sp.	<i>Balantidium</i> sp., Strongylida
11	F	10.7		Not detected	<i>Balantidium</i> sp., Strongylida, <i>Entamoeba polecki</i>
12	M	20.2	<i>Amblyomma sculptum</i>	<i>T. evansi</i> , Anaplasmataceae granulocyte hemobacteria	<i>Balantidium</i> sp.

	F	26.3	<i>T. evansi</i> , Anaplasmataceae granulocyte hemobacteria	<i>Balantidium</i> sp., Strongylida
14	F	21.3	<i>L. braziliensis</i>	<i>Balantidium</i> sp.
15	F	24.8	<i>Mycoplasma</i> sp., Anaplasmataceae granulocyte hemobacteria	<i>Balantidium</i> sp., <i>E. polecki</i>
16	M	23.1	<i>L. braziliensis</i> , <i>Mycoplasma</i> sp.	<i>Balantidium</i> sp.
17	F	13.5	not detected	<i>Balantidium</i> sp., <i>E. polecki</i> , <i>Iodamoeba bütschlii</i> , Strongylida, Spiruridae,
18	F	15	not detected	Strongylida
19	F	23.2	<i>Mycoplasma</i> sp.	<i>Balantidium</i> sp., <i>E. polecki</i> , <i>I. bütschlii</i>
20	F	24	<i>L. braziliensis</i> , <i>T. evansi</i> , <i>Mycoplasma</i> sp., Anaplasmataceae granulocyte hemobacteria	<i>Balantidium</i> sp.
21	M	22.5	<i>Mycoplasma</i> sp.	<i>Balantidium</i> sp., Strongylida, Spiruridae

22	F	17.8		<i>L. braziliensis</i> , <i>T. evansi</i> , <i>Mycoplasma</i> sp.	<i>Balantidium</i> sp., Strongylida
23	M	ND		<i>L. braziliensis</i> , <i>Mycoplasma</i> sp.	<i>Balantidium</i> sp., Strongylida
24	F	ND	<i>A. sculptum</i>	<i>L. braziliensis</i> , <i>Mycoplasma</i> sp	<i>E. polecki</i>

M= Male; F= Female.

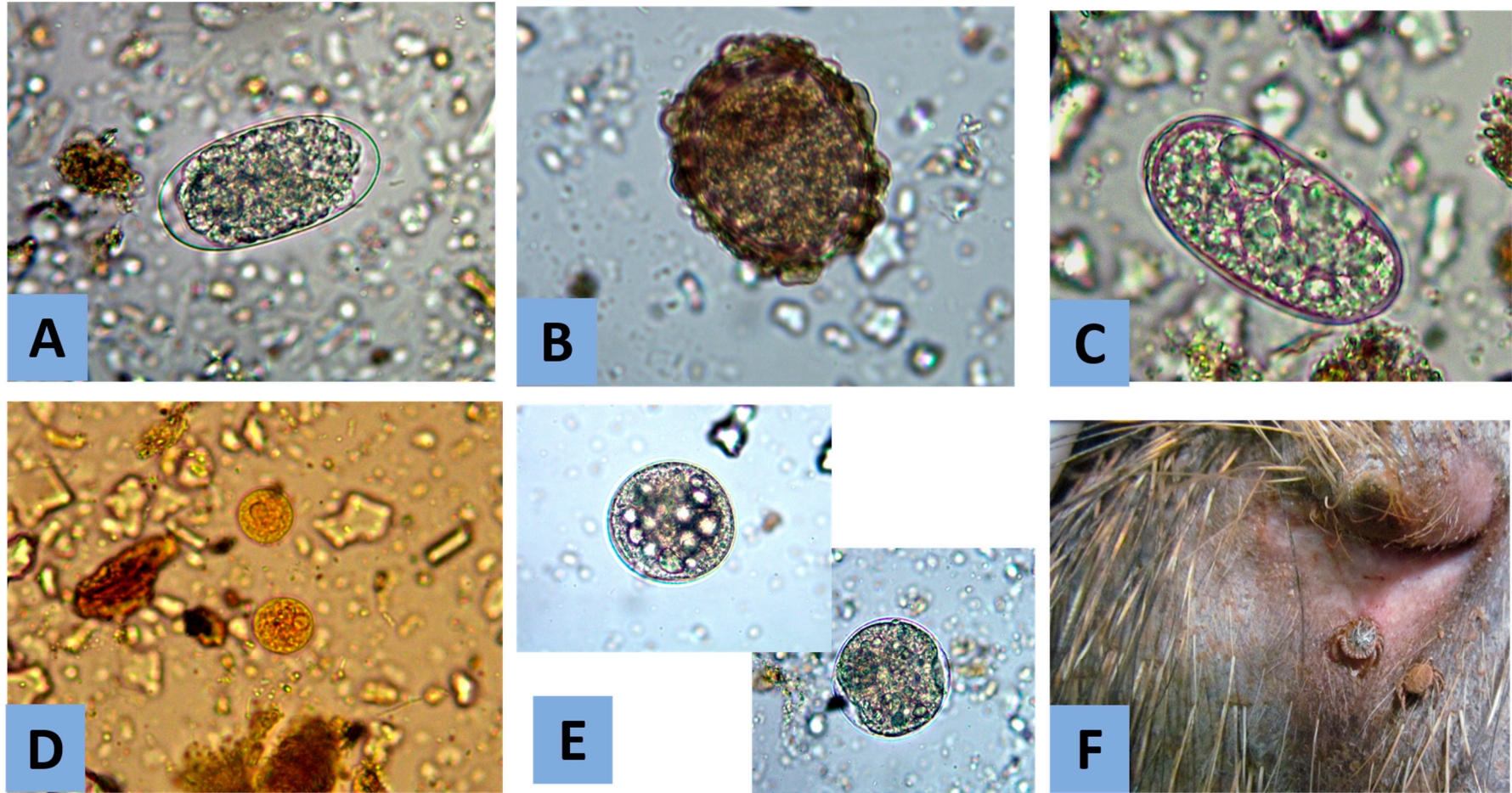


Figure S1. (A–E): Eggs and cysts found in fecal samples from peccary: A) Strongylida egg; B) *Ascaris* sp. eggs; C) Spiruridae egg; D) *Entamoeba polecki* cysts; E) *Balantidium* sp. cysts; F: Pair of *Amblyomma sculptum* attached below the tail of a collared peccary.