

Figure S1. Comparative serum killing differences between *M. agalactiae* type strain PG2 and another field strain GM139 treated with *M. agalactiae*-sensitized sheep serum obtained on Day 17 post infection. Serum killing differs significantly between these two wild-type strains with **** $p < 0.0001$.

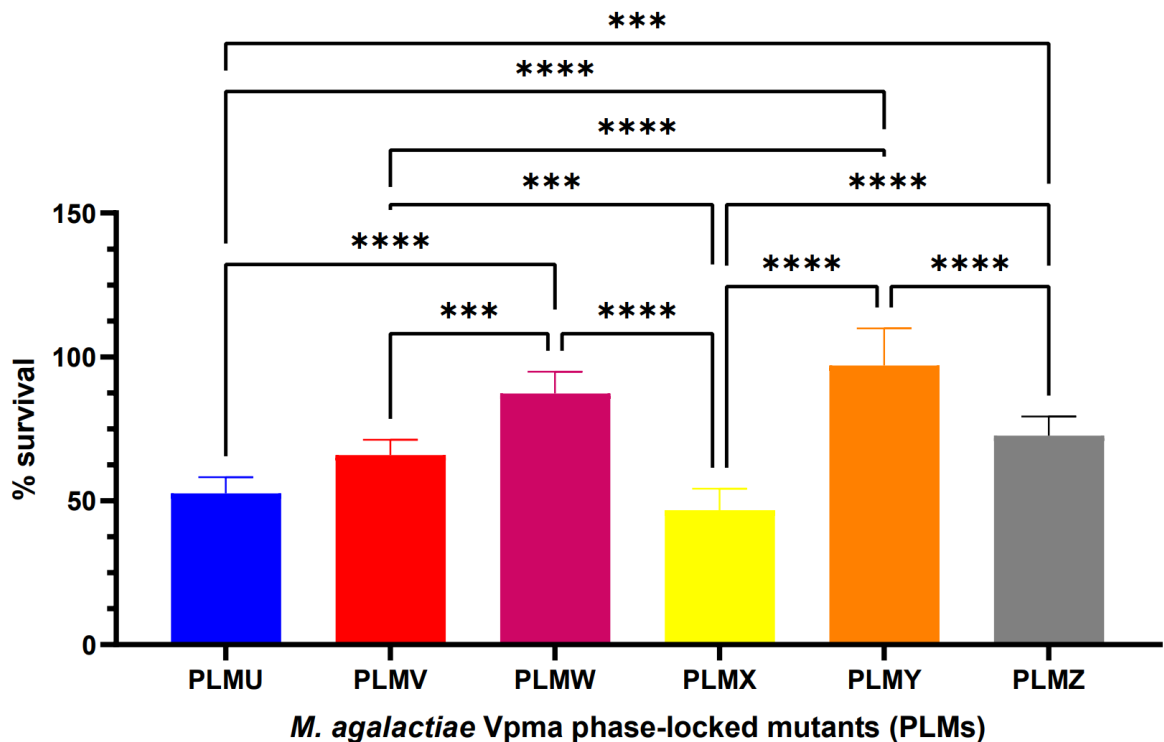


Figure S2. Comparative serum killing differences between the six different Vpma Phase-Locked Mutants (PLMs) treated with *M. agalactiae*-sensitized sheep serum obtained on Day 17 post infection. Mean survival percentages are significantly different between all the Phase-Locked Mutants except for Phase-Locked Mutant U (PLMU) vs. Phase-Locked Mutant X (PLMX), Phase-Locked Mutant V (PLMV) vs. Phase-Locked Mutant Z (PLMZ), and Phase-Locked Mutant W (PLMW) vs. Phase-Locked Mutant Y (PLMY). *** $p < 0.001$; **** $p < 0.0001$.

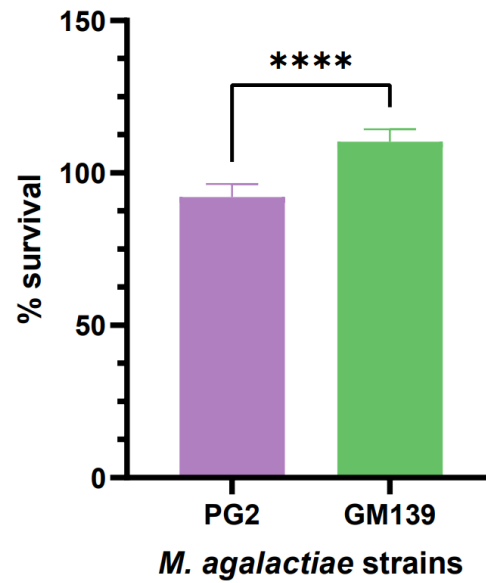


Figure S3. Comparative serum killing differences between *M. agalactiae* type strain PG2 and another field strain GM139 treated with guinea pig serum complement. Serum killing differs significantly between these two wild-type strains with **** $p < 0.0001$.

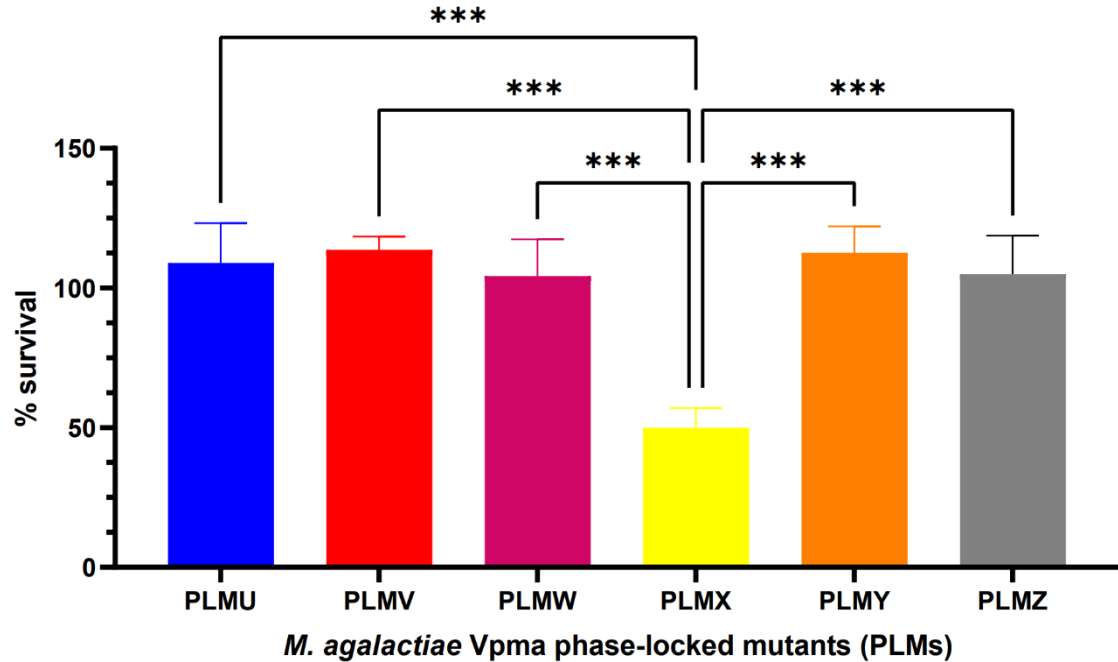


Figure S4. Comparative serum killing differences between the six different Vpma Phase-Locked Mutants (PLMs) treated with guinea pig serum complement. Mean survival values are significantly different only between Phase-Locked Mutant X (PLMX) and the other five PLMs. *** $p < 0.001$.