

Table S1. Results of pathogenicity tests.

Strain	Host	Mean diameter of rotting potato tissue ± Standard Deviation [mm]	Mean surface area of rotting chicory tissue ± Standard Deviation [cm ²]
<i>Pectobacterium atrosepticum</i>			
DPMP134	Potato tuber	20.7 ± 1.5	17.2 ± 1.7
DPMP634	Potato tuber	15.7 ± 4.5	0.9 ± 0.5
*IFB5050	Potato stem	20.2 ± 1.0	27.1 ± 1.2
*IFB5205	Potato stem	24.0 ± 1.7	nt
*ICMP1526^T	Potato stem	8.6 ± 1.3	0
<i>Pectobacterium brasiliense</i>			
DPMP224	Potato tuber	12.3 ± 1.6	11.2 ± 1.3
DPMP374	Potato tuber	21.3 ± 0.6	16.2 ± 0.6
DPMP396	Bittersweet	15.7 ± 1.0	38.1 ± 0.9
DPMP55	Potato tuber	21.0 ± 4.6	14.1 ± 1.1
*IFB5258	Sugar Beet	15.7 ± 1.0	2.1 ± 0.1
*IFB5369	Potato tuber	21.0 ± 2.0	16.91 ± 0.9
* LMG2137^T	Potato tuber	13.0 ± 1.0	10.6 ± 0.4
<i>Pectobacterium carotovorum</i>			
DPMP189	Potato tuber	19.7 ± 1.6	13.2 ± 0.4
DPMP199	Potato tuber	14.0 ± 2.6	17.4 ± 0.7
DPMP200	Potato tuber	17.9 ± 1.0	37.7 ± 0.9
DPMP399	Sugar beet	22.0 ± 0.9	23.1 ± 0.6
*DPMP510	Potato stem	13.0 ± 0.9	11.4 ± 0.6
*LMG2401	Carrot	6.0 ± 1.0	nt
*LMG2404^T	Potato	12.6 ± 0.9	0
<i>Pectobacterium parmentieri</i>			
DPMP136	Potato tuber	15.7 ± 0.7	25.7 ± 1.9
*IFB5322	Potato stem	17.6 ± 0.4	0
*SCC3193	Potato	30.0 ± 1.2	1.9 ± 0.1
<i>Pectobacterium parvum</i>			
DPMP20	Potato	23.4 ± 0.5	38.5 ± 1.6
*IFB5220	Potato stem	15.4 ± 2.4	39.5 ± 3.5
*s421^T	Potato	14.3 ± 2.3	nt
<i>Pectobacterium odoriferum</i>			
DPMP293	Celery	19.2 ± 4.0	13.7 ± 1.1
*IFB5295	Carrot	16.2 ± 0.4	11.7 ± 2.0
*CFBP1878^T	Chicory	11.6 ± 0.8	9.5 ± 1.8
<i>Pectobacterium polaris</i>			
DPMP286	Potato	19.2 ± 4.7	36.2 ± 3.7
DPMP380	Sugar beet	12.5 ± 2.5	26.8 ± 1.9
DPMP397	Bittersweet	8.7 ± 0.6	8.6 ± 1.0
DPMP403	Sugar beet	22.2 ± 2.4	12.4 ± 1.8
*IFB5222	Potato stem	10.6 ± 1.0	36.2 ± 5.8
*NIBIO1006^T		12.5 ± 4.4	42.5 ± 4.5
<i>Pectobacterium versatile</i>			
DPMP204	Potato	22.0 ± 4.0	21.8 ± 2.9
DPMP387	Red beet	16.3 ± 4.7	29.7 ± 3.1
DPMP335	Peppers felepano	25.5 ± 3.0	24.7 ± 3.9
DPMP248	Potato	18.9 ± 2.3	16.5 ± 2.2
DPMP337	Fennel	19.3 ± 2.4	13.1 ± 2.9
DPMP198	Cactus	22.1 ± 2.4	17.8 ± 2.4
DPMP633	Potato tuber	19.3 ± 2.7	6.9 ± 1.0
*IFB5169	Potato stem	35.4 ± 3.0	0
*SCC1		14.0 ± 1.0	21.8 ± 3.4
<i>Pectobacterium zantedeschiae</i>			
9M^T = DPMP423	Calla lilly	21.9 ± 1.2	24.6 ± 10.4
<i>Dickeya dadantii</i>			
DPMP625		21.6 ± 1.3	0
* 3937^T		25.0 ± 5.0	13.06 ± 2.4
<i>Negative control</i>			
		0	0

* reference strains and strains that were isolated from plants with disease symptoms

^T – Type Strain

Table S2. Comparison of the potato tissue maceration ability of the 27 strains isolated from asymptomatic plant samples in contrast to 17 strains originating from plants with disease symptoms. Strains abbreviations: * strains isolated from symptomatic plants, ^T - type strains. Means \pm SD of diameters of the rotten tissues is depicted. Three independent experiments with nine technical replications were conducted. Means marked with a different letter (a, b, c, ... p) are significantly different according to the Games-Howell test followed by a post-hoc analysis applying Welch and Brown-Forsythe corrections for nonhomogeneous variances criterion at $p < 0.02$.

	x
* CFBP1878T	abcdef
* DPMP510	abcdegh
* ICMP1526 T	acfg
* IFB5050	ijklmno
* IFB5169	abcdefghijklmnop
* IFB5205	ijklmp
* IFB5222	abcdf
* IFB5258	cdeghijmno
* IFB5295	cdeghijkn
* IFB5322	ghijkn
* IFB5369	bdehijklmnop
* LMG2137 T	abcdegh
* LMG2404	abcdegh
* s421T	abcdefghijklmno
* SCC3193	p
*LMG2401	f
*NIBIO1006T	abcdefghijklmnop
*SCC1	abcdeghjn
9MT	iklm
DPMP134	ehijklmno
DPMP136	cdeghijn
DPMP189	ehijklmno
DPMP198	abcdeghijklmnop
DPMP199	abcdefghijklmnop
DPMP20	lp
DPMP200	hijklmno
DPMP204	abcdefghijklmnop
DPMP224	abcdeghno
DPMP248	abcdefghijklmnop
DPMP286	abcdefghijklmnop
DPMP293	abcdefghijklmnop
DPMP335	abcdefghijklmnop
DPMP337	abcdefghijklmnop
DPMP353	ijklmno
DPMP374	lmo
DPMP380	abcdefghijklmnop
DPMP387	abcdefghijklmnop

DPMP396	cdeghijkn
DPMP397	abf
DPMP399	kl
DPMP403	abcdeghijklmnop
DPMP511	abcdeghijklmnop
DPMP55	abcdeghijklmnop
DPMP625	ijklm
DPMP633	abcdeghijklmnop
DPMP634	abcdeghijklmnop
* 3937 T	abcdeghijklmnop

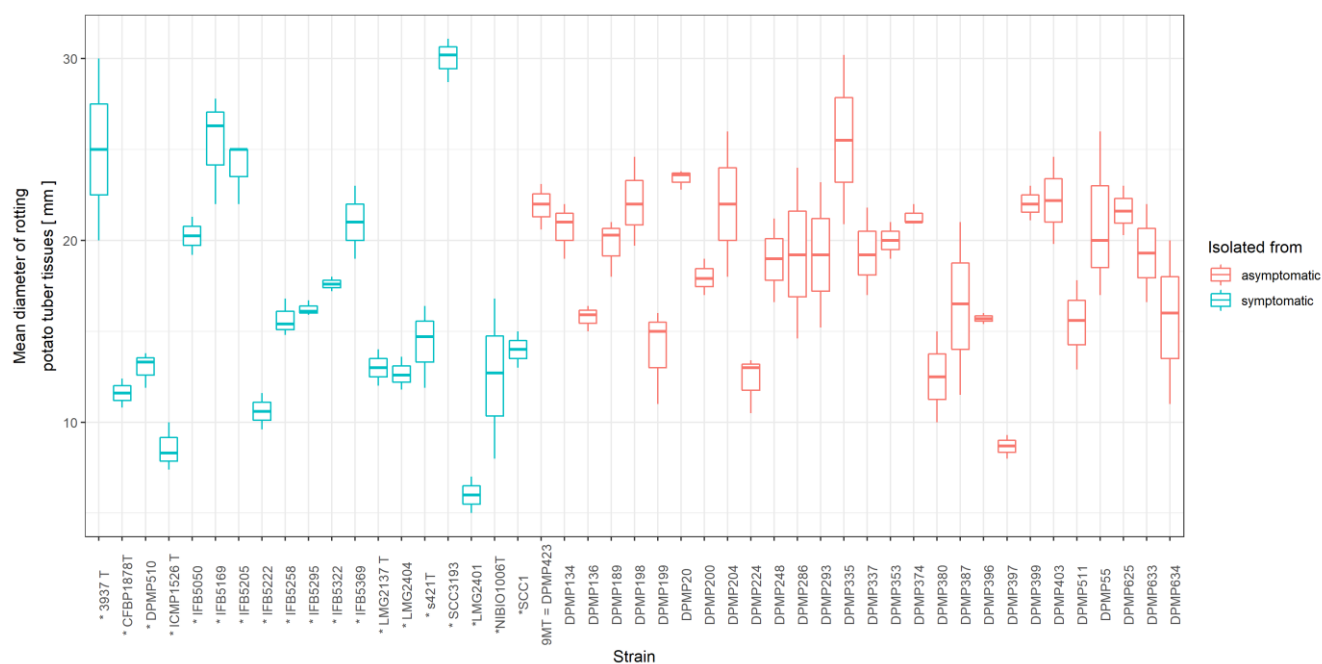


Figure S1. Comparison of the potato tissue maceration ability of the 26 strains isolated from asymptomatic plant samples in contrast to 21 strains originating from plants with disease symptoms. Strains abbreviations: * strains isolated from symptomatic plants, ^T - type strains.

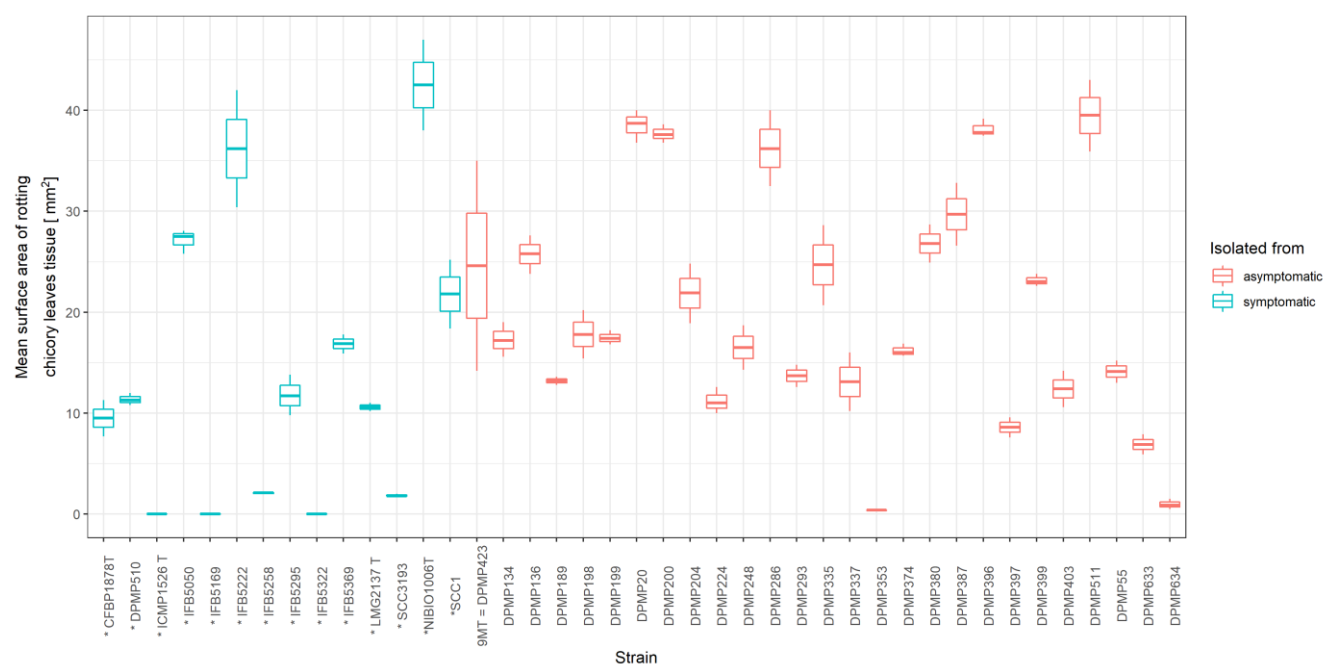


Figure S2. Comparison of the chicory tissue maceration ability of the 26 strains isolated from asymptomatic plant samples in contrast to 18 strains originating from plants with disease symptoms. Strains abbreviations: * strains isolated from symptomatic plants, T - type strains.