

Figure S1: gene expression levels of TLR7, TLR9, IFNL1, IFNL2, IFNL3, ISG15, and CCL5 in cervical mucosa cells of HPV-negative and HPV-positive women. Relative mRNA expression values (y -axis), calculated using the threshold cycle relative quantification ($2^{-\Delta Ct}$) and log-transformed, are reported. Horizontal lines indicate the median value of the group indicated below the x -axis. All p -values calculated using Mann–Whitney tests for comparisons between two groups were >0.05 .

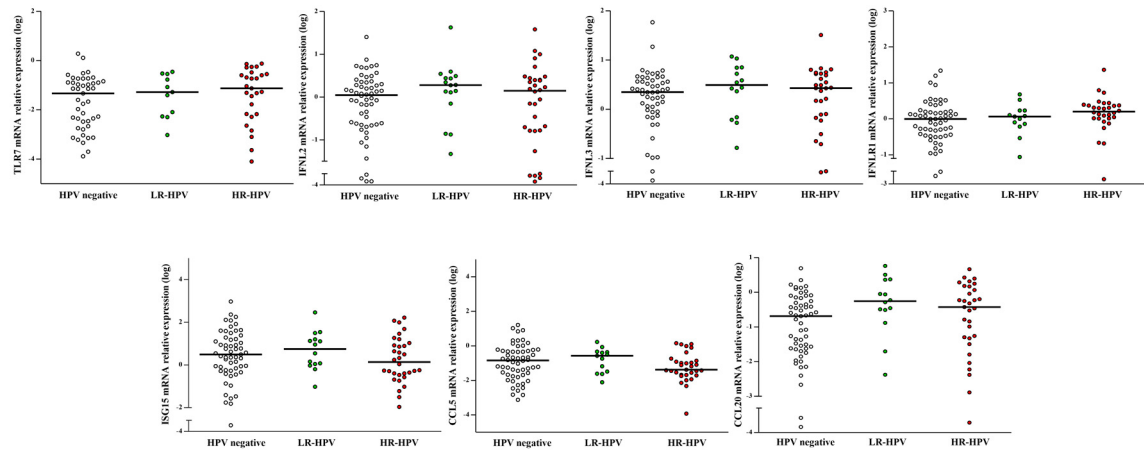


Figure S2: gene expression levels of TLR7, IFNL2, IFNL3, IFNL1, ISG15, CCL5, and CCL20 in cervical mucosa cells of HPV-negative and HPV-positive women. Relative mRNA expression values (y -axis), calculated using the threshold cycle relative quantification ($2^{-\Delta Ct}$) and log-transformed, are reported. Horizontal lines indicate the median value of the group indicated below the x -axis. All p -values calculated using Kruskal–Wallis tests for comparisons between three groups were >0.05 .

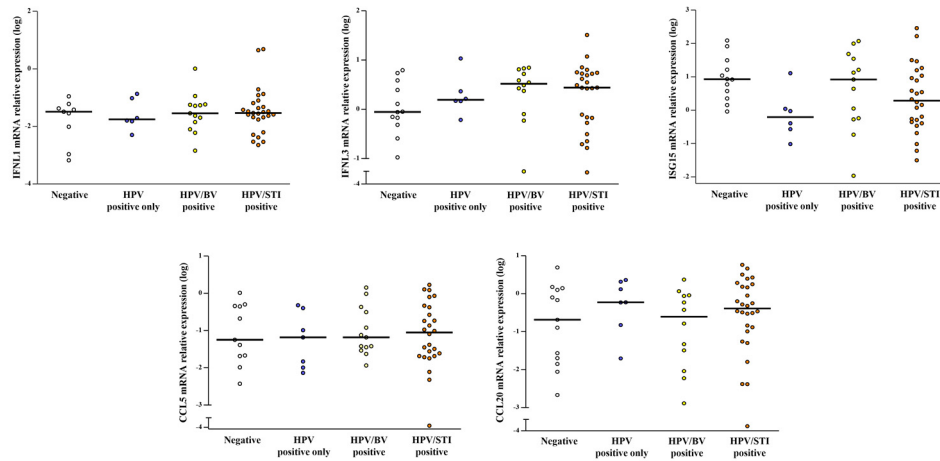


Figure S3: Gene expression levels of IFNL1, IFNL3, ISG15, CCL5, and CCL20 in cervical mucosa cells of negative, HPV-positive, HPV/BV-positive, and HPV/STI-positive women. Relative mRNA expression values (y -axis), calculated using the threshold cycle relative quantification ($2^{-\Delta C_t}$) and log-transformed, are reported for the genes. Horizontal lines indicate the median value of the group indicated below the x -axis. All p -values calculated with the Jonckheere–Terpstra (JT) test for trends were >0.05 .

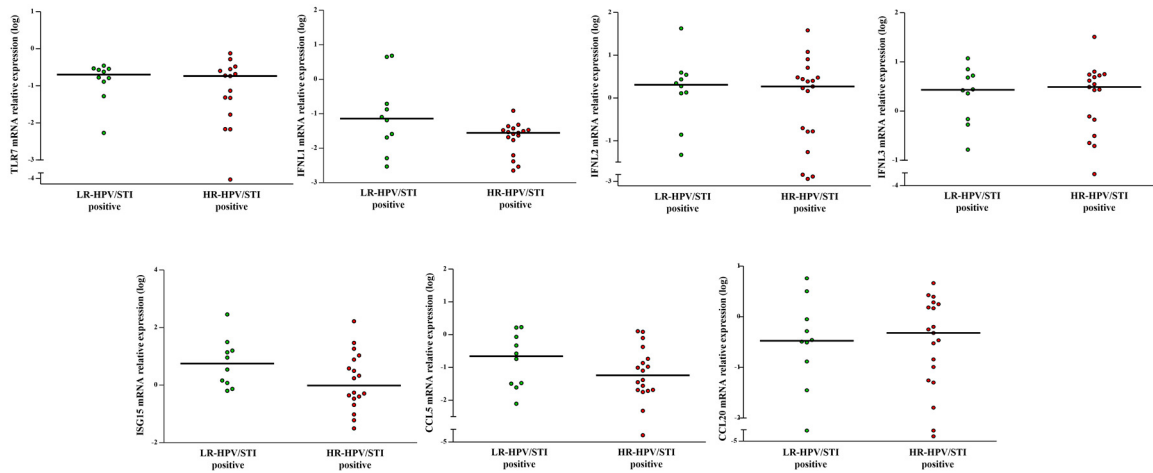


Figure S4: Gene expression levels of TLR7, IFNL1, IFNL2, IFNL3, ISG15, CCL5, and CCL20 in cervical mucosa cells of LR-HPV/STI-positive and HR-HPV/STI-positive women. Relative mRNA expression values (y -axis), calculated using the threshold cycle relative quantification ($2^{-\Delta C_t}$) and log-transformed, are reported for the genes. Horizontal lines indicate the median value of the group indicated below the x -axis. All p -values calculated with Mann–Whitney tests for comparisons between two groups were >0.05 .