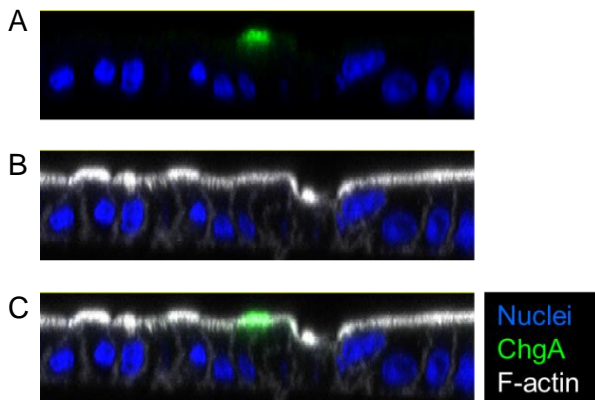


Supplementary Figure 1 (S1). Enteroid monolayers were stained with anti-F-actin to visualize the brush border (blue), anti-NHE3 to visualize the NHE3 transporter (red) and Hoechst to visualize nuclei (light blue). *S. sonnei* 1233-SP was staining with CFSE prior to invasion (green).



Supplementary Figure 2 (S2). Enteroid monolayers were stained with anti-chromogranin A (ChgA) for enteroendocrine cells (green) (A and C) and anti-F-actin to visualize the brush border (white) (B and C), and Hoechst to visualize nuclei (blue) (A, B, and C).