

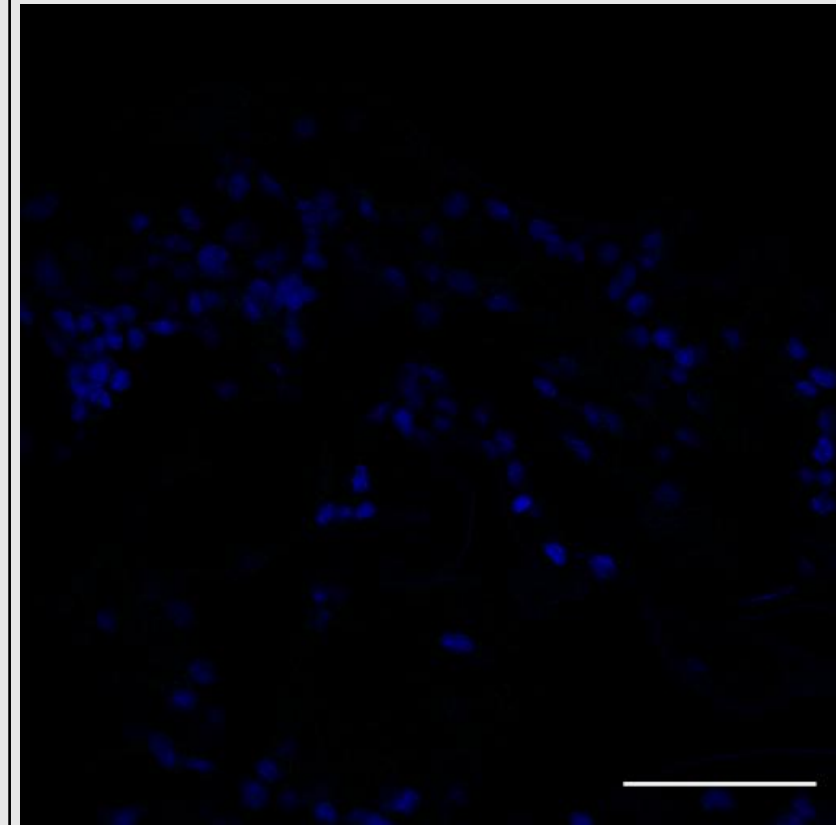
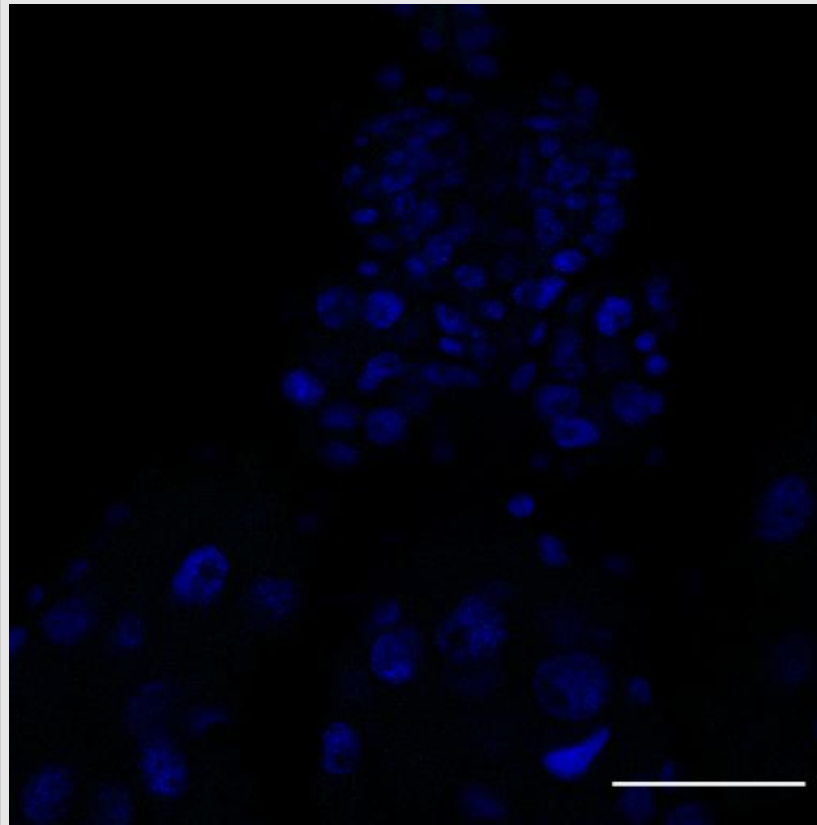
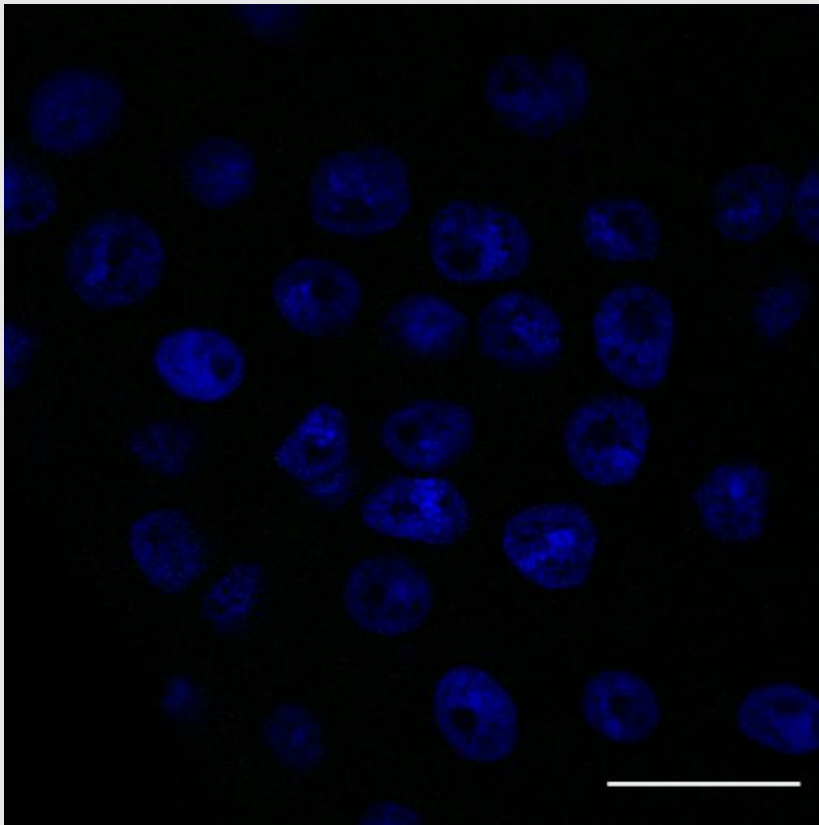
Controls: No antibody with DAPI staining

Green-488nm laser (493-634 nm emission) & Blue-405 nm laser (410-497nm emission)

Salivary Gland

Gut

Musculature



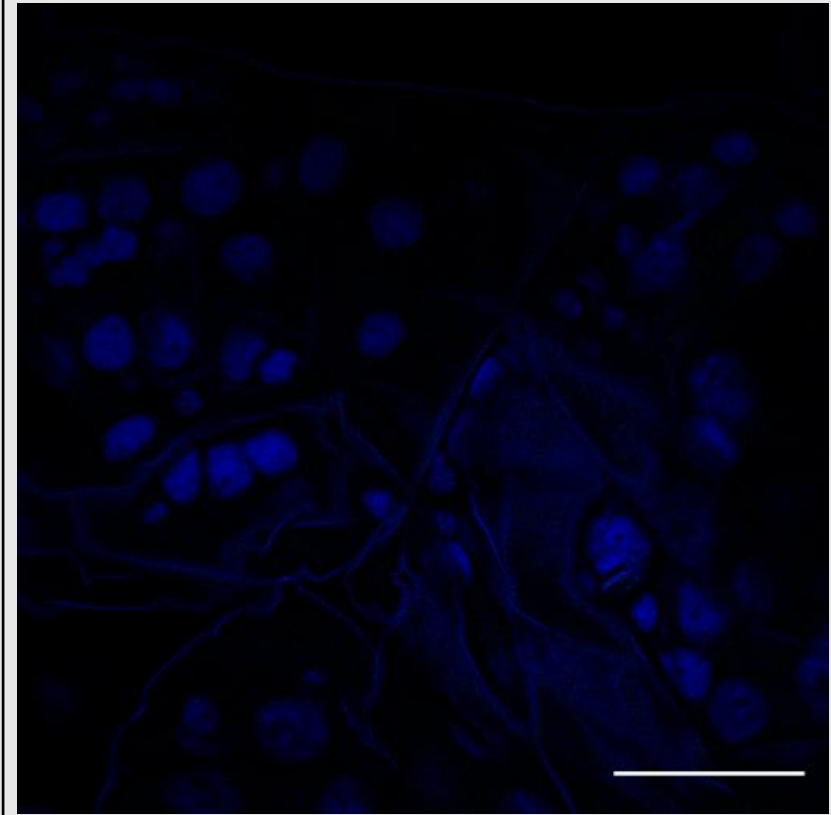
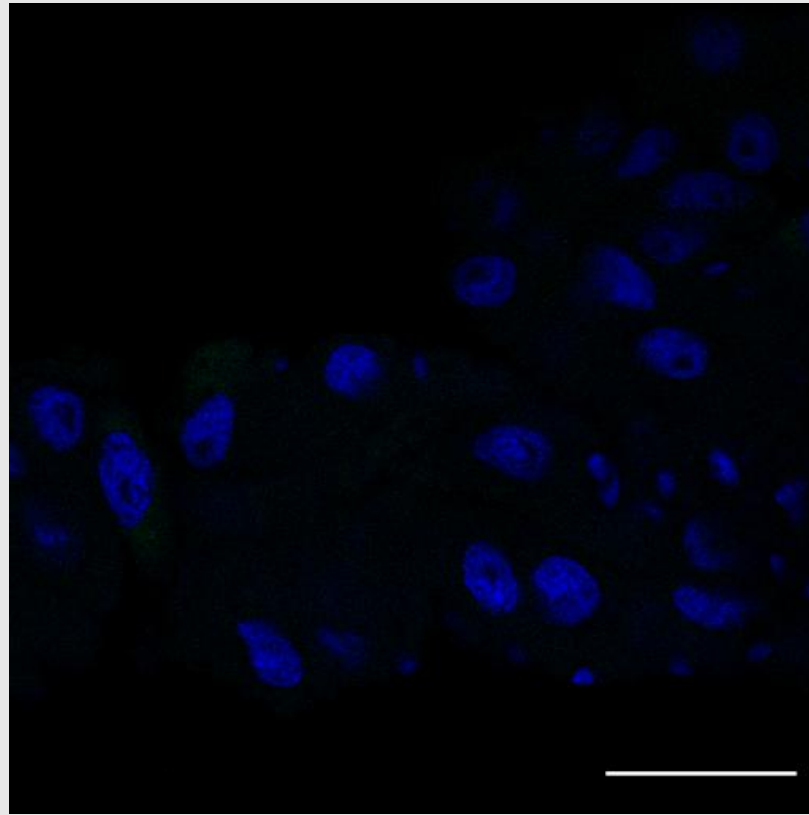
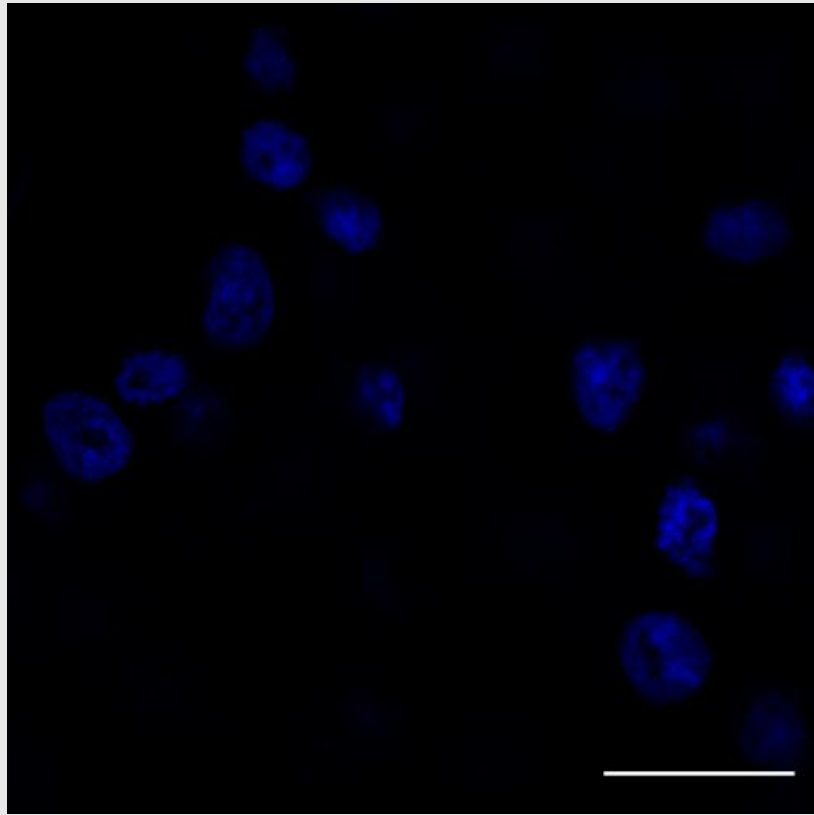
Controls: Primary antibody only with DAPI

Green-488nm laser (493-634 nm emission) & Blue-405 nm laser (410-497nm emission)

Salivary Gland

Gut

Musculature



Controls: Secondary antibody only with DAPI

Green-488nm laser (493-634 nm emission) & Blue-405 nm laser (410-497nm emission)

Salivary Gland

Gut

Musculature

