

Figure S1. Rarefaction curve of bacterial (A) and fungal (B) species under the three host conditions. H: healthy aphids, M: mycotized aphids; S: starved aphids. Three replicates were set up for each condition.

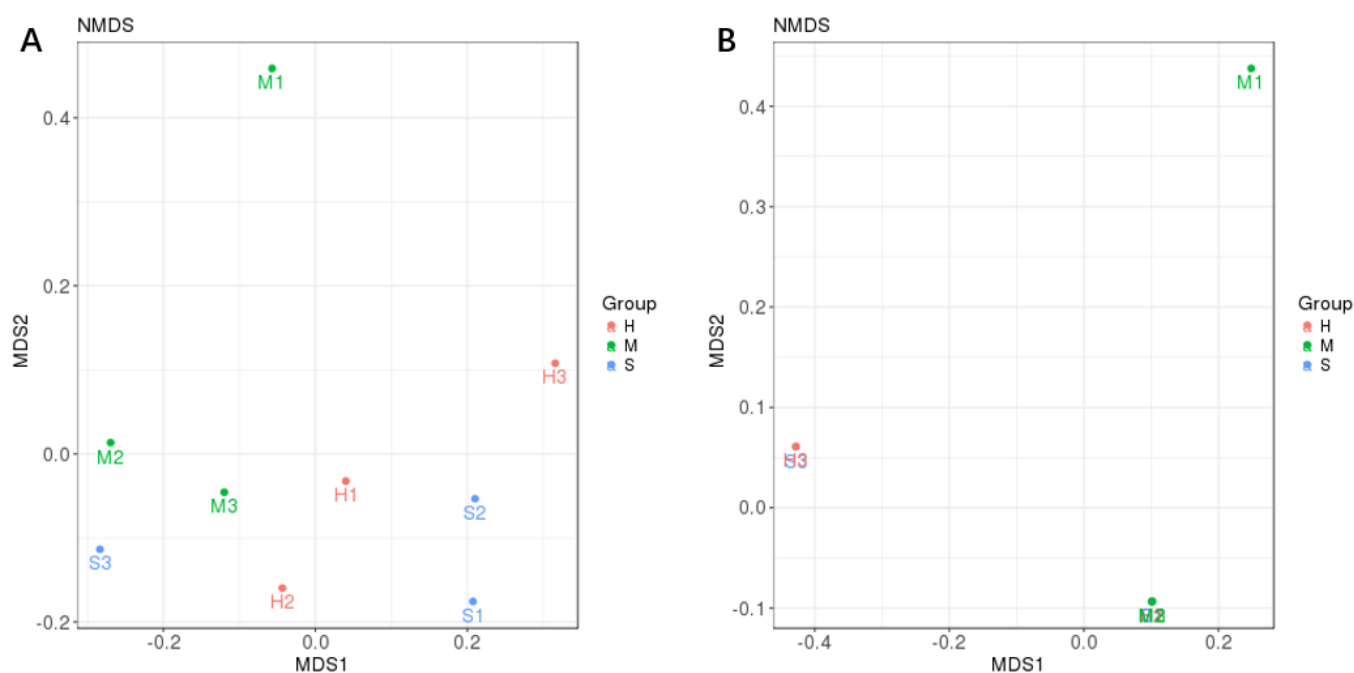


Figure S2. NMDS analysis of aphid-associated bacterial (A) and fungal (B) flora under the three different conditions. H: healthy aphids, M: mycotized aphids; S: starved aphids. The points in the figure represent the samples, and the distance between the points indicates the degree of difference.

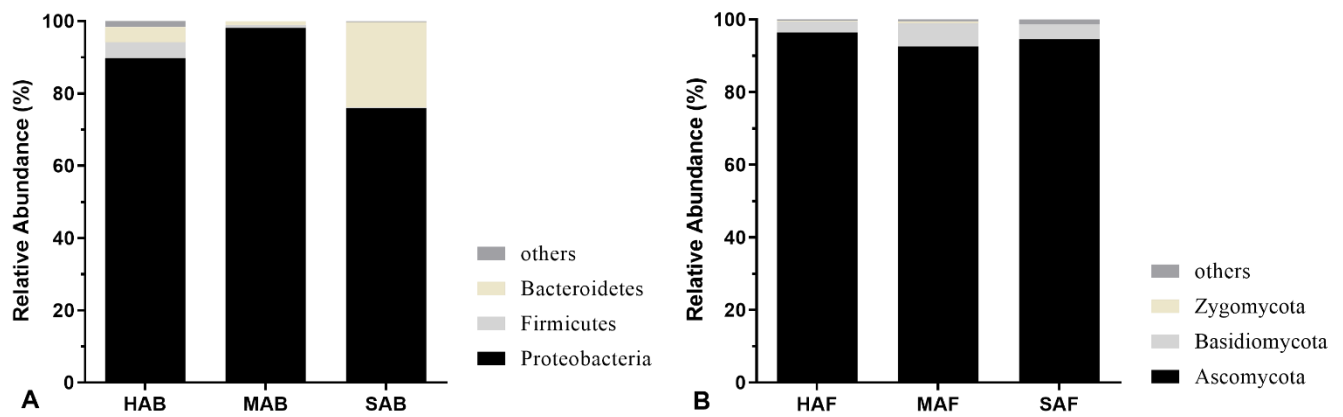


Figure S3. Relative composition of bacterial (A) and fungal (B) phyla in aphid-associated microbial communities under the three different conditions. HAB and HAF indicate healthy aphids, MAB and MAF mycotized aphids, SAB and SAF starved aphids.

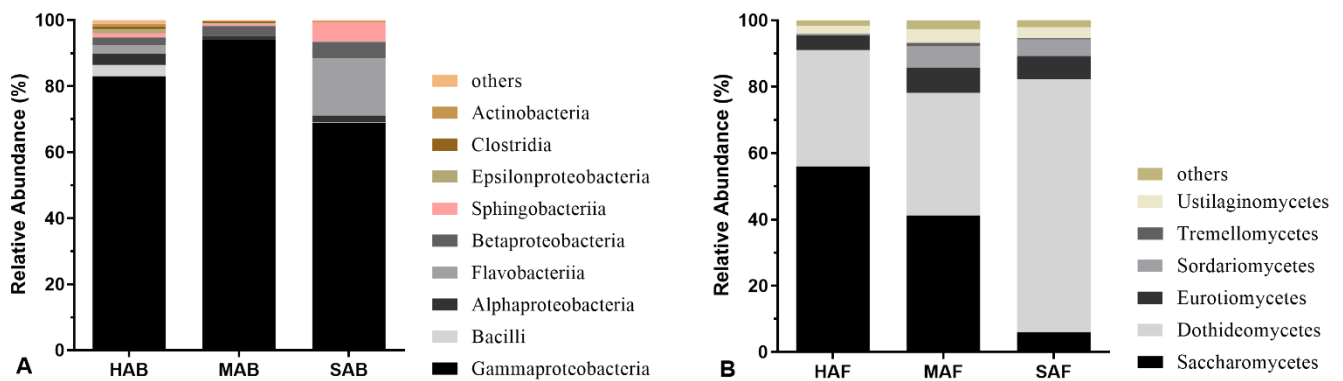


Figure S4. Relative composition of bacterial (A) and fungal (B) classes in aphid-related microbiomes under the three different conditions. HAB and HAF indicate healthy aphids, MAB and MAF mycotized aphids, SAB and SAF starved aphids.

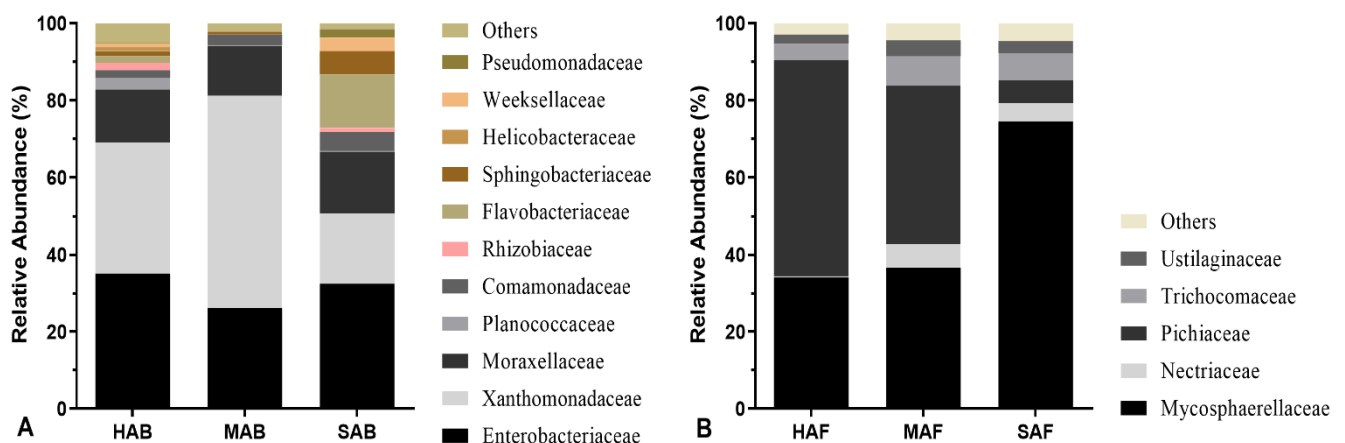


Figure S5. Relative compositions of bacterial (A) and fungal (B) families in aphid-related microbiomes under the three different conditions. HAB and HAF indicate healthy aphids, MAB and MAF mycotized aphids, SAB and SAF starved aphids.