

Supplementary Material: College Students' Knowledge of Ticks in Oklahoma: Assessment and Insights

Survey Supplemental File:

Below we are going to provide some statements about ticks. Please select True, Not True, or I don't know.

1. Ticks are in a majority of Oklahoma counties.

- ☐ True
- ☐ Not True
- ☐ I don't know

2. Ticks in Oklahoma may carry diseases.

- ☐ True
- ☐ Not True
- ☐ I don't know

3. Ticks can jump.

- ☐ True
- ☐ Not True
- ☐ I don't know

4. Ticks reside up in trees.

- ☐ True
- ☐ Not True
- ☐ I don't know

5. Ticks live in the grass.

- ☐ True
- ☐ Not True
- ☐ I don't know

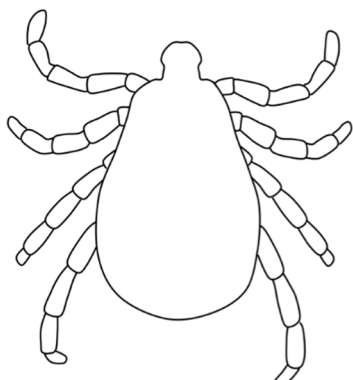
Next we are going to ask tick-related questions. Please select the answer or answers that seem most fitting.

6. Which of the following is the most prevalent disease spread by ticks in Oklahoma?

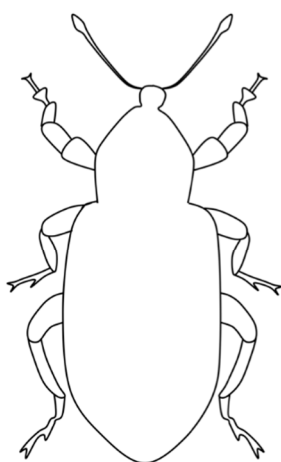
- ☐ A. Lyme disease
- ☐ B. Heartland virus
- ☐ C. Ehrlichiosis
- ☐ D. Rocky Mountain spotted fever
- ☐ E. Tularemia

7. Which of the following is a tick?

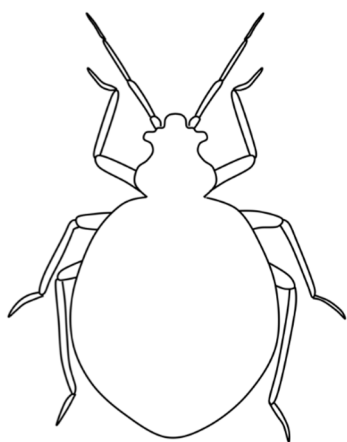
☐



☐



☐



Below we are going to ask you some questions about any prior experience with ticks.

8. Have you ever seen a tick on your pet?

- ☐ Yes
- ☐ No
- ☐ Not sure
- ☐ Not applicable
- ☐ Prefer not to answer

9. Do you check your pet for ticks after spending time outdoors?

- ☐ Yes
- ☐ No
- ☐ Not sure
- ☐ Not applicable
- ☐ Prefer not to answer

10. Have you ever been bitten by a tick?

- ☐ Yes
- ☐ No
- ☐ Not sure
- ☐ Not applicable
- ☐ Prefer not to answer

11. Have you ever seen a physician after being bitten by a tick?

- ☐ Yes
- ☐ No
- ☐ Not sure
- ☐ Not applicable
- ☐ Prefer not to answer

12. Do you know someone with a tick-borne disease?

- ☐ Yes
- ☐ No
- ☐ Not sure
- ☐ Not applicable
- ☐ Prefer not to answer

13. Have you ever developed a rash after being bitten by a tick?

- ☐ Yes
- ☐ No
- ☐ Not sure
- ☐ Not applicable
- ☐ Prefer not to answer