

1848

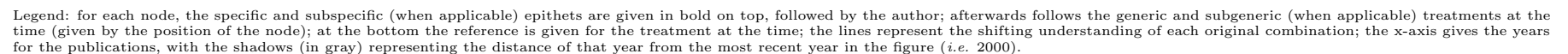
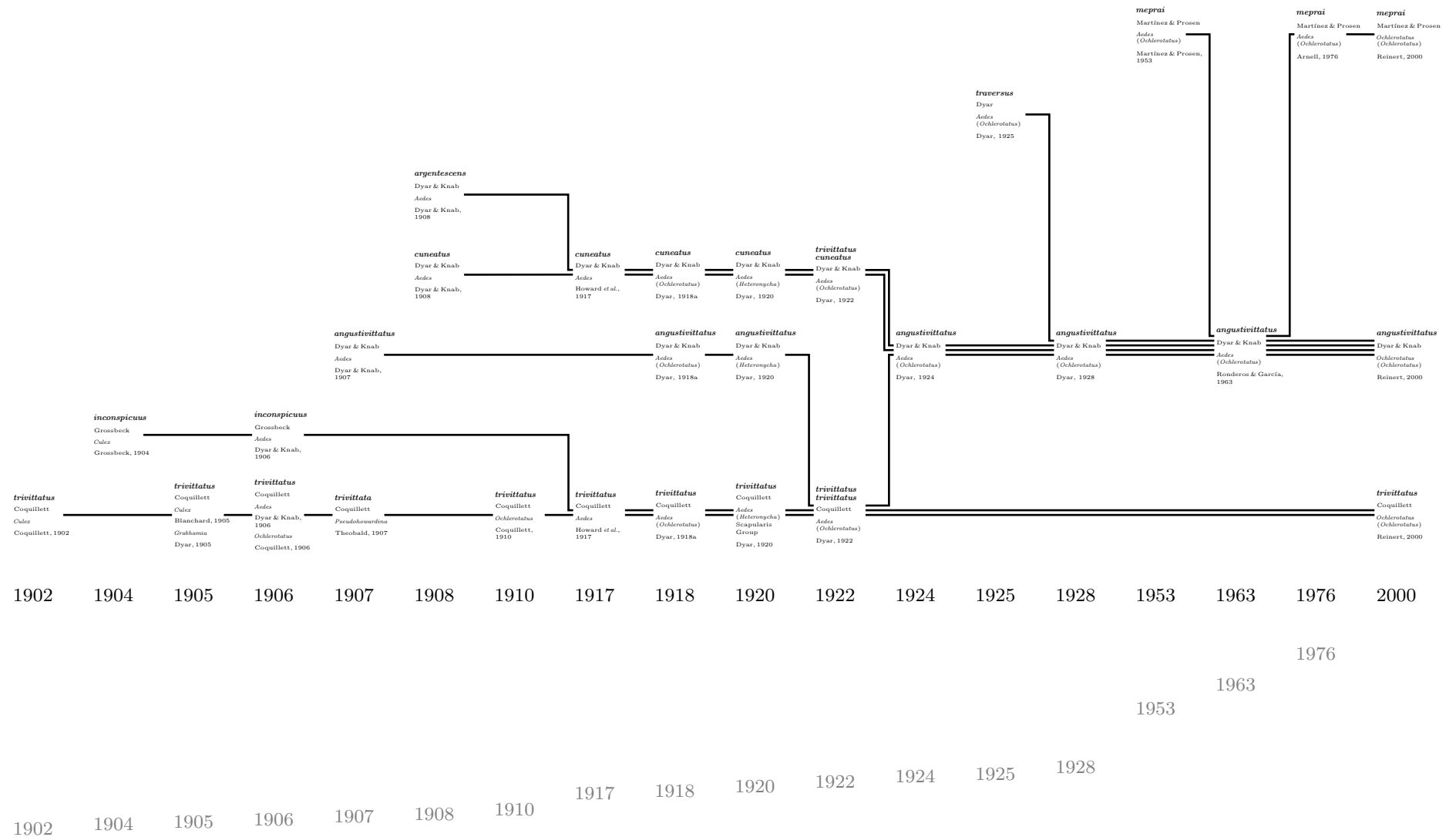


Figure S2. . The taxonomic history of the names within *Ochlerotatus* (*Ochlerotatus*) Lynch Arribálzaga, 1891: the original combinations *Aedes* (*Ochlerotatus*) *meprai* Martínez & Prosen, 1953; *Aedes* (*Ochlerotatus*) *trivittatus* Dyar, 1925; *Aedes argentescens* Dyar & Knab, 1908; *Aedes cuneatus* Dyar & Knab, 1908; *Aedes angustivittatus* Dyar & Knab, 1907; *Culex inconspicuus* Grossbeck, 1904 and *Culex trivittatus* Coquillett, 1902.



Legend: for each node, the specific and subspecific (when applicable) epithets are given in bold on top, followed by the author; afterwards follows the generic and subgeneric (when applicable) treatments at the time (given by the position of the node); at the bottom the reference is given for the treatment at the time; the lines represent the shifting understanding of each original combination; the x-axis gives the years for the publications, with the shadows (in gray) representing the distance of that year from the most recent year in the figure (*i.e.* 2000).

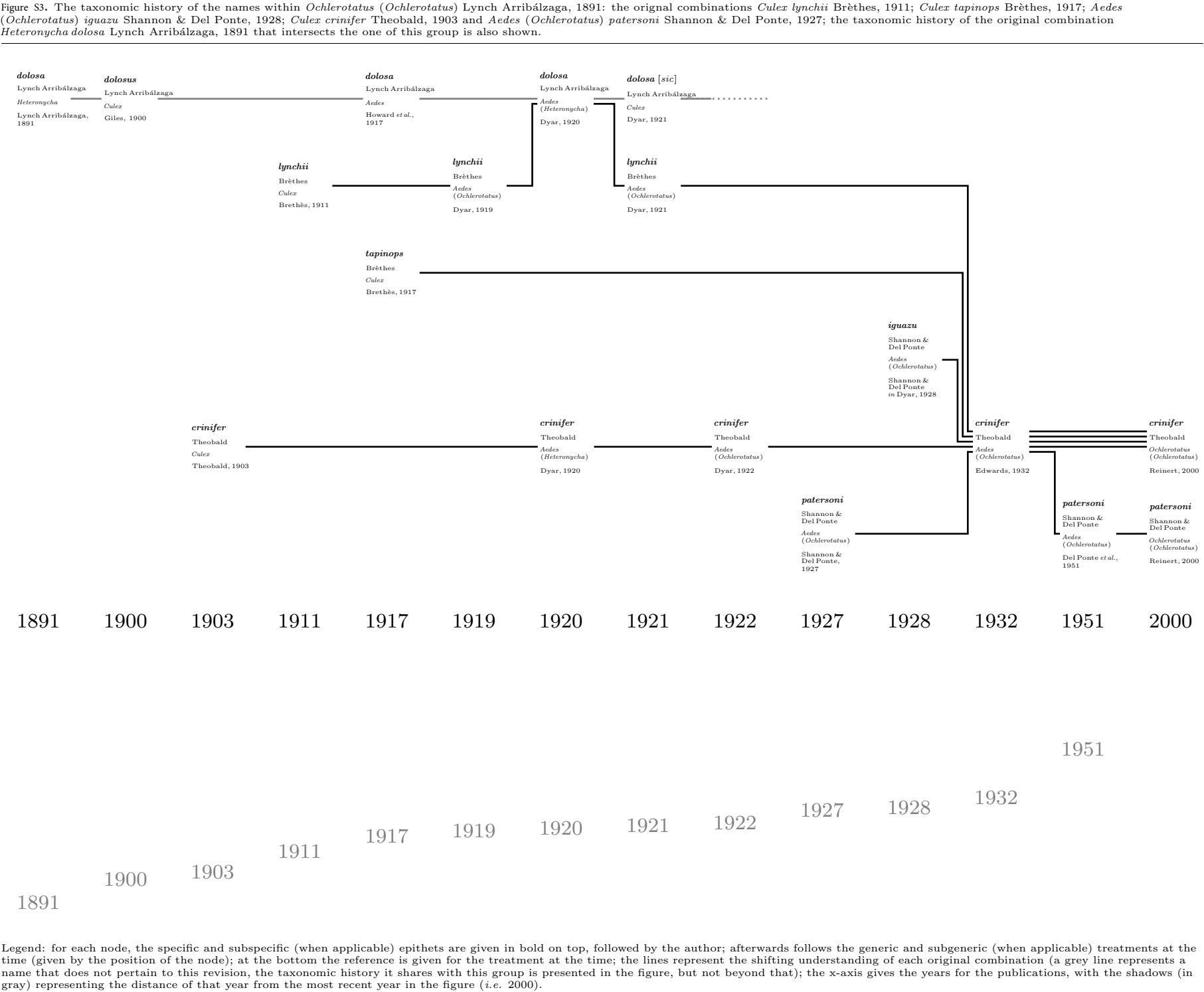
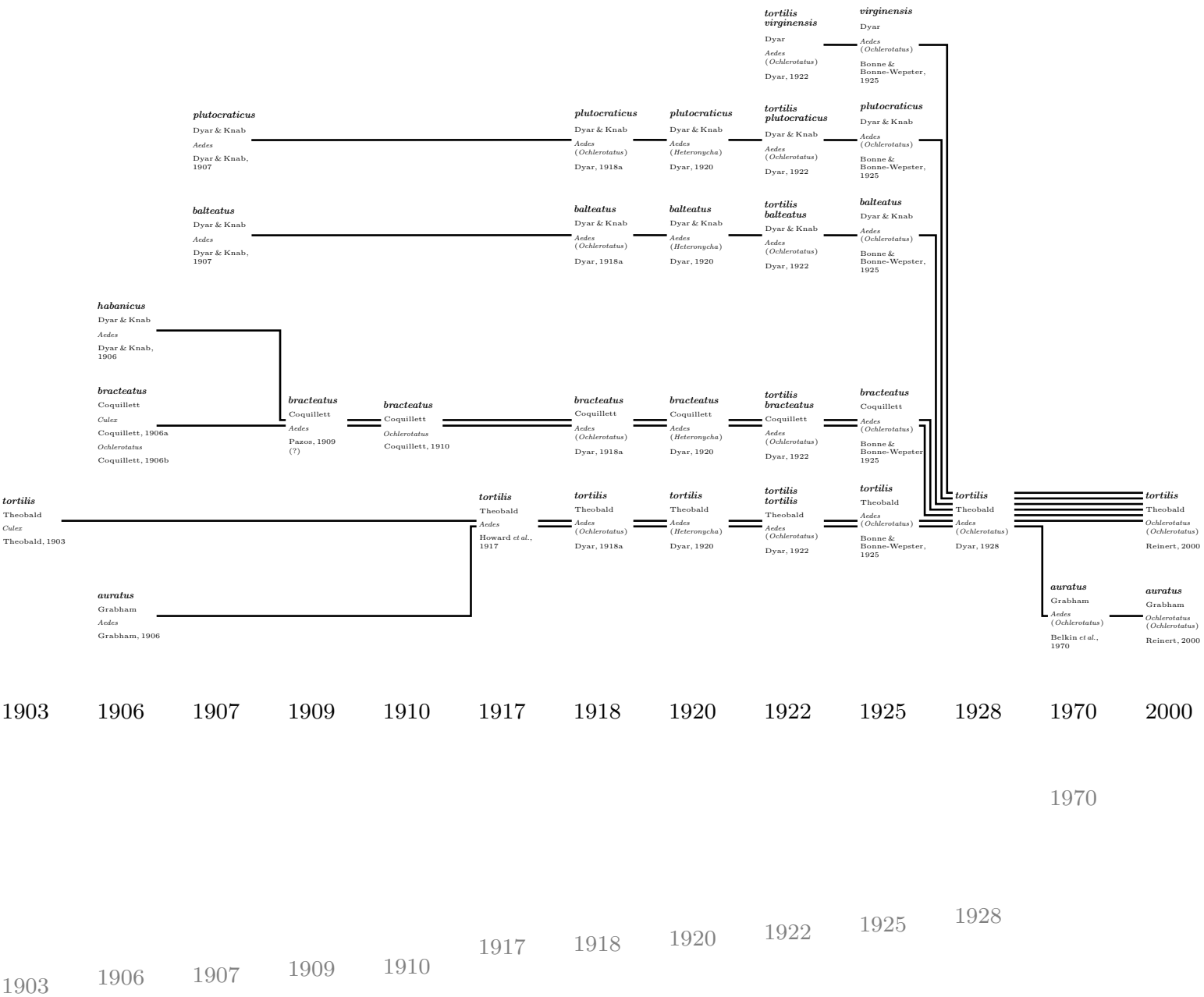


Figure S4. The taxonomic history of the names within *Ochlerotatus* (*Ochlerotatus*) Lynch Arribálzaga, 1891: the original combinations *Aedes* (*Ochlerotatus*) *tortilis virginensis* Dyar, 1922; *Aedes plutocraticus* Dyar & Knab, 1907; *Aedes balteatus* Dyar & Knab, 1907; *Aedes habanicus* Dyar & Knab, 1906; *Aedes bracteatus* Coquillett, 1906a; *Culex tortilis* Theobald, 1903 and *Aedes auratus* Grabham, 1906.



Legend: for each node, the specific and subspecific (when applicable) epithets are given in bold on top, followed by the author; afterwards follows the generic and subgeneric (when applicable) treatments at the time (given by the position of the node); at the bottom the reference is given for the treatment at the time; the lines represent the shifting understanding of each original combination; the x-axis gives the years for the publications, with the shadows (in gray) representing the distance of that year from the most recent year in the figure (*i.e.* 2000).

Figure S5 . The taxonomic history of the names within *Ochlerotatus* (*Ochlerotatus*) Lynch Arribálzaga, 1891: the original combinations *Aedes* (*Ochlerotatus*) *raymondi* Del Ponte *et al.*, 1951; *Aedes* (*Ochlerotatus*) *keyensis* Buren, 1947; *Aedes* (*Taeniorhynchus*) *thelcter* Dyar, 1918 and *Aedes obturbator* Dyar & Knab, 1907; the taxonomic history of the original combinations *Aedes milleri* Dyar, 1922 and *Culex bilineatus* Theobald, 1903 that intersects the one of this group is also shown.

