

Article

The Correlation between Metformin Use and Incident Dementia in Patients with New-Onset Diabetes Mellitus: A Population-Based Study

Kuang-Hua Huang ^{1,†} , Ya-Fang Tsai ^{2,†} , Chiachi Bonnie Lee ¹ , Shuo-Yan Gau ³ , Tung-Han Tsai ¹, Ning-Jen Chung ³ and Chien-Ying Lee ^{4,5,*} 

¹ Department of Health Services Administration, China Medical University, Taichung 406040, Taiwan

² Department of Health Policy and Management, Chung Shan Medical University, Taichung 40201, Taiwan

³ School of Medicine, Chung Shan Medical University, Taichung 40201, Taiwan

⁴ Department of Pharmacology, Chung Shan Medical University, Taichung 40201, Taiwan

⁵ Department of Pharmacy, Chung Shan Medical University Hospital, Taichung 40201, Taiwan

* Correspondence: cshd015@csmu.edu.tw; Tel.: +886-4-24730022 (ext. 11664)

† These authors contributed equally to this work.

Abstract: The evidence of metformin's effect on dementia is conflicting. This study investigates the association between metformin use and the risk of dementia among patients with diabetes mellitus (DM). This study included patients with new-onset DM between 2002 and 2013. We divided the patients into patients who used metformin and patients who did not. Two models were used to assess metformin use: the cumulative defined daily dose (cDDD) of metformin use and the intensity of metformin use. This study with 3-year and 5-year follow-ups investigated the risk of dementia among patients with DM who used metformin. At the 3-year follow-up, patients who received cDDD < 300 had an odds ratio (OR) of developing dementia of 0.92 (95% confidence interval [CI] = 0.89–0.96); patients who used metformin at intensities <10 and 10–25 DDD/month had ORs of 0.92 (95% CI: 0.87–0.97) and 0.92 (95% CI: 0.85–1.00), respectively. Metformin use at cDDD 300–500 (OR = 0.80, 95% CI = 0.56–1.15) or >500 (OR = 1.48, 95% CI = 0.48–4.60) or at an intensity >25 DDD/month (OR = 0.84, 95% CI = 0.60–1.18) were not associated with an incident of dementia. There were similar results at the 5-year follow-up. Patients with a low intensity of metformin use had a lower risk of dementia. However, higher doses of metformin with higher intensity exhibited no protective role in dementia. Prospective clinical trials are warranted to evaluate the actual underlying mechanisms between metformin dosage and the risk of dementia.

Keywords: dementia; metformin; diabetes mellitus; defined daily dose



Citation: Huang, K.-H.; Tsai, Y.-F.; Lee, C.B.; Gau, S.-Y.; Tsai, T.-H.; Chung, N.-J.; Lee, C.-Y. The Correlation between Metformin Use and Incident Dementia in Patients with New-Onset Diabetes Mellitus: A Population-Based Study. *J. Pers. Med.* **2023**, *13*, 738. <https://doi.org/10.3390/jpm13050738>

Academic Editors: Miguel Ortega and Roberto Franceschi

Received: 20 February 2023

Revised: 25 April 2023

Accepted: 25 April 2023

Published: 26 April 2023



Copyright: © 2023 by the authors. Licensee MDPI, Basel, Switzerland. This article is an open access article distributed under the terms and conditions of the Creative Commons Attribution (CC BY) license (<https://creativecommons.org/licenses/by/4.0/>).

1. Introduction

Dementia is one of the main neurodegenerative disorders (NDs) in the elderly [1]. Alzheimer's disease (AD) is the most common type of dementia among older adults and is characterized by progressive cognitive impairment and loss of memory, accounting for 60–80% of all cases [2]. The hippocampus is vulnerable to damage at early stages of AD.

Several studies have indicated that insulin signaling is involved in brain functions, such as cognition and memory, which are impaired in the brains of AD patients and AD experimental models. Neuronal insulin resistance (IR) is also present in the brain and can be induced by amyloid β -peptide oligomers in primary cultures of hippocampal neurons in mice and monkeys [3–5]. IR in diabetes mellitus (DM) and obesity has been linked with functional and structural brain change in AD brains and is associated with a risk of developing AD [6]. Evidence has indicated a clear positive association between type 2 diabetes mellitus (T2DM) and AD risk [7]; patients with T2DM are at higher risk of dementia. An epidemiological study shows that T2DM patients has been linked to a

1.5–2-fold increased risk for developing mild cognitive impairment [8]. Metformin is an orally effective and insulin-sensitizing antidiabetic medication and is the first-line treatment of T2DM for most patients [9]. Metformin has been suggested to potentially provide neuroprotective effects through the mediation of inflammatory response inhibition [10] and the improvement of cognitive function [11]. Several studies have demonstrated that T2DM patients who receive metformin exhibit a lower risk of dementia [12–15].

Several possible mechanisms have been proposed that link metformin use with the risk of dementia [16,17] [18]. However, several longitudinal studies have challenged findings on the protective role of metformin during dementia pathogenesis [19–21]. More studies have instead indicated that metformin use may increase the risk of dementia [16,22–24]. Therefore, the correlation between metformin use for T2DM and the risk of dementia warrant further research. However, few epidemiological studies have employed a nationwide database to examine the association between metformin use and the risk of dementia. We conducted a population-based study to investigate the association between metformin use and the risk of dementia in patients with T2DM.

2. Materials and Methods

2.1. Data Source

This study was based on Taiwan's National Health Insurance Research Database (NHIRD) released by the Health and Welfare Data Science Center (HWDC) at the Ministry of Health and Welfare in Taiwan. The NHIRD contains the information of beneficiaries from the Taiwanese National Health Insurance (NHI) program and can serve as a foundation for the procurement of real-world evidence to support clinical decisions and healthcare policymaking [25,26]. The NHI is a government-run, single-payer, national social insurance program that has operated since 1995. As the NHI covers more than 99% of residents in Taiwan, we utilized the NHIRD to examine the risk of dementia among T2DM patients receiving metformin.

2.2. Study Subjects

The subjects of this study were patients with new-onset DM aged ≥ 50 from 2002 to 2013, who were enrolled in this study. DM was defined as receiving a DM diagnosis at least three times a year, in accordance with the International Classification of Diseases, Ninth Revision, Clinical Modification [ICD-9-CM] code 250 [27], and the first DM diagnosis date was defined as the index date. Metformin was defined in accordance with the anatomical therapeutic chemical code A10BA02 and measured based on the first year after the index date. To reduce bias, we excluded the following patients: those with type 1 DM, those who had a diagnosis of dementia before DM or a diagnosis of dementia in the first year after DM, and those who were hospitalized within 1 year after DM diagnosis. A total of 736,473 new-onset patients with DM were included from 2002 to 2013. The study included 382,328 patients in the exposure group who received metformin medication within the first year after their DM diagnosis and 354,145 patients in the comparison group who did not receive any metformin medication. The selection process for study subjects is shown in Figure 1.

2.3. Study Design

This was a population-based study that followed patients with DM for 3 and 5 years to investigate the risk of dementia associated with metformin use. We assessed metformin intake using the defined daily dose (DDD), a standard measure of drug use and exposure. The DDD is defined by the World Health Organization as the assumed average maintenance dose per day in adults, although it may not reflect the recommended or prescribed daily dose [28]. We considered a 1-year observation period before initiating metformin treatment, following DM diagnosis, and used a baseline dose of 2 g metformin, based on the DDD [29]. The study subjects were divided into 3 groups according to the following ranges of the cumulative DDD (cDDD) of metformin: 0, <300, 300–500, and >500. In addition, the study

subjects were divided into 4 groups according to the following ranges of average monthly DDD: 0, <10, 10–25, and >25. All patients were observed at 3 and 5 years after their DM diagnosis. Dementia was indicated by 3 or more outpatient visits for a dementia diagnosis within 1 year, according to the ICD-9-CM codes 290, 294.1, 331.0, and 331.82 and the ICD-10-CM codes F00–F03, F05.1, G30.0, G30.1, G30.8, and G30.9. The first dementia diagnosis date was defined as the date of incident dementia. The comorbidities consisted of hypertension (ICD-9-CM 401–405), hyperlipidemia (ICD-9-CM 272.0–272.4), hyperuricemia (ICD-9-CM 790.6), cerebrovascular disease (CVD; ICD-9 CM 430–438), coronary artery disease (CAD; ICD-9 CM 414.0), arrhythmia (ICD-9-CM 427), heart failure (ICD-9-CM 428.0), anxiety (ICD-9-CM 300.0), depression (ICD-9-CM 311), chronic obstructive pulmonary disease (COPD; ICD-9-CM 490–492, 494–496), chronic kidney disease (CKD; ICD-9-CM 585), obesity (ICD-9-CM 278.00), and alcoholism (ICD-9-CM 303).

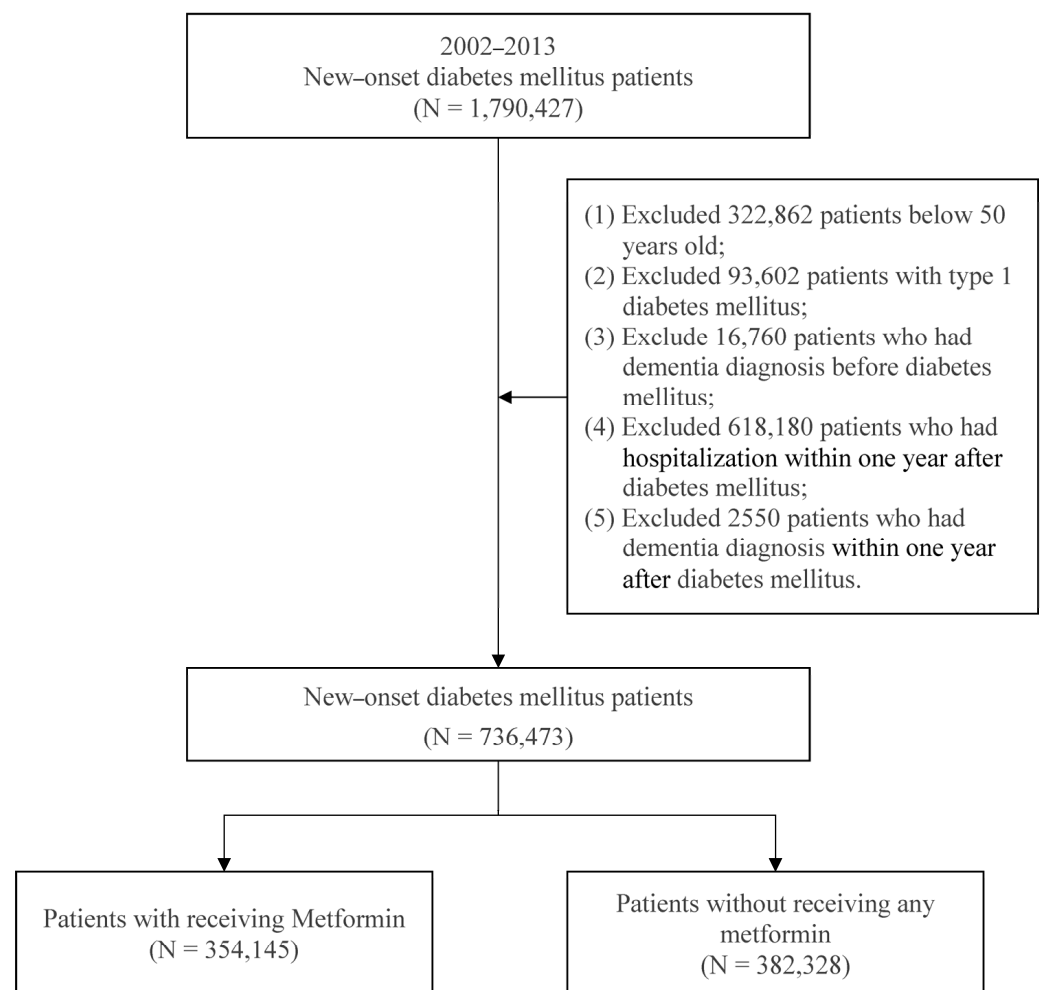


Figure 1. Patient selection process.

2.4. Statistical Analysis

We conducted all analyses using SAS version 9.4, and the statistical significance level is a p value of <0.05. We used a chi-squared test to assess whether there were differences in baseline characteristics between patients receiving metformin and patients not receiving metformin. Multiple logistic regression with adjustments for variables was used to estimate the risk of dementia in different cDDDs of metformin use and intensities of metformin use (expressed as DDD/month). The adjusted variables in the logistic model were gender, age, income level, urbanization, DCSI, and comorbidities.

3. Results

3.1. Participant Characteristics

The average age of participants was 62.03 ± 8.76 years old (Table 1). Moreover, 51.36% of participants were women, and 48.64% were men. With regards to age groups, 64.63% were 50–64 years old, 24.66% were 65–74 years, and 10.72% were aged 75 years or older. The average age of participants who were administered metformin was 61.22 years, with a standard deviation of 8.39 years. With regard to comorbidities, 166,995 patients (43.68%) had hypertension, 68,843 patients (18.01%) had hyperlipidemia, 2821 patients (0.74%) had hyperuricemia, 17,000 patients (4.45%) had CVD, 29,886 patients (7.82%) had CAD, 14,243 patients (3.73%) had arrhythmia, 6803 patients (1.78%) had heart failure, 33,802 patients (8.84%) had anxiety, 1741 patients (0.46%) had depression, 20,361 patients (5.33%) had COPD, 1522 patients (0.40%) had CKD, 1742 patients (0.46%) had obesity, and 227 patients (0.06%) had alcoholism. Furthermore, the distribution of each comorbidity, except for alcoholism, differed significantly between patients who were and were not administered metformin ($p < 0.001$).

Table 1. Baseline characteristics of study subjects.

| Variables | Total | | Metformin | | | | p-Value |
|---------------------------------|--------------|--------|--------------|-------|--------------|-------|---------|
| | | | Non-Users | | Users | | |
| | N | % | N | % | N | % | |
| Total | 736,473 | 100.00 | 354,145 | 51.36 | 382,328 | 48.64 | |
| Gender | | | | | | | |
| Female | 378,225 | 51.36 | 187,099 | 52.83 | 191,126 | 49.99 | <0.001 |
| Male | 358,248 | 48.64 | 167,046 | 47.17 | 191,202 | 50.01 | |
| Age (year) (Mean ± SD) | 62.03 ± 8.76 | | 62.90 ± 9.06 | | 61.22 ± 8.39 | | <0.001 |
| 50–64 | 475,964 | 64.63 | 215,283 | 60.79 | 260,681 | 68.18 | <0.001 |
| 65–74 | 181,583 | 24.66 | 92,699 | 26.18 | 88,884 | 23.25 | |
| 75+ | 78,926 | 10.72 | 46,163 | 13.04 | 32,763 | 8.57 | |
| Income level (NTD) ^a | | | | | | | <0.001 |
| ≤21,000 | 381,282 | 51.77 | 187,444 | 52.93 | 193,838 | 50.70 | <0.001 |
| 21,001–33,000 | 174,995 | 23.76 | 78,427 | 22.15 | 96,568 | 25.26 | |
| ≥33,001 | 180,196 | 24.47 | 88,274 | 24.93 | 91,922 | 24.04 | |
| Urbanization | | | | | | | <0.001 |
| Level 1 | 203,376 | 27.61 | 103,603 | 29.25 | 99,773 | 26.10 | <0.001 |
| Level 2 | 238,177 | 32.34 | 113,779 | 32.13 | 124,398 | 32.54 | |
| Level 3 | 114,530 | 15.55 | 52,472 | 14.82 | 62,058 | 16.23 | |
| Level 4 | 103,176 | 14.01 | 48,606 | 13.72 | 54,570 | 14.27 | |
| Level 5 | 17,291 | 2.35 | 8405 | 2.37 | 8886 | 2.32 | |
| Level 6 | 31,369 | 4.26 | 14,398 | 4.07 | 16,971 | 4.44 | |
| Level 7 | 28,554 | 3.88 | 12,882 | 3.64 | 15,672 | 4.10 | |
| DCSI score ^b | | | | | | | <0.001 |
| 0 | 447,130 | 60.71 | 211,227 | 59.64 | 235,903 | 61.70 | <0.001 |
| 1 | 157,532 | 21.39 | 75,610 | 21.35 | 81,922 | 21.43 | |
| 2+ | 131,811 | 17.90 | 67,308 | 19.01 | 64,503 | 16.87 | |
| Hypertension | | | | | | | <0.001 |
| No | 404,777 | 54.96 | 189,444 | 53.49 | 215,333 | 56.32 | <0.001 |
| Yes | 331,696 | 45.04 | 164,701 | 46.51 | 166,995 | 43.68 | |
| Hyperlipidemia | | | | | | | <0.001 |
| No | 579,453 | 78.68 | 265,968 | 75.10 | 313,485 | 81.99 | <0.001 |
| Yes | 157,020 | 21.32 | 88,177 | 24.90 | 68,843 | 18.01 | |
| Hyperuricemia | | | | | | | <0.001 |
| No | 730,080 | 99.13 | 350,573 | 98.99 | 379,507 | 99.26 | <0.001 |
| Yes | 6393 | 0.87 | 3572 | 1.01 | 2821 | 0.74 | |
| Cerebrovascular disease | | | | | | | <0.001 |
| No | 699,849 | 95.03 | 334,521 | 94.46 | 365,328 | 95.55 | <0.001 |
| Yes | 36,624 | 4.97 | 19,624 | 5.54 | 17,000 | 4.45 | |

Table 1. Cont.

| Variables | Total | | Metformin | | | | p-Value |
|-------------------------|---------|-------|-----------|-------|---------|-------|---------|
| | | | Non-Users | | Users | | |
| | N | % | N | % | N | % | |
| Coronary artery disease | | | | | | | <0.001 |
| No | 672,668 | 91.34 | 320,226 | 90.42 | 352,442 | 92.18 | |
| Yes | 63,805 | 8.66 | 33,919 | 9.58 | 29,886 | 7.82 | |
| Arrhythmia | | | | | | | <0.001 |
| No | 705,090 | 95.74 | 337,005 | 95.16 | 368,085 | 96.27 | |
| Yes | 31,383 | 4.26 | 17,140 | 4.84 | 14,243 | 3.73 | |
| Heart failure | | | | | | | <0.001 |
| No | 722,542 | 98.11 | 347,017 | 97.99 | 375,525 | 98.22 | |
| Yes | 13,931 | 1.89 | 7128 | 2.01 | 6803 | 1.78 | |
| Anxiety | | | | | | | <0.001 |
| No | 663,384 | 90.08 | 314,858 | 88.91 | 348,526 | 91.16 | |
| Yes | 73,089 | 9.92 | 39,287 | 11.09 | 33,802 | 8.84 | |
| Depression | | | | | | | <0.001 |
| No | 732,707 | 99.49 | 352,120 | 99.43 | 380,587 | 99.54 | |
| Yes | 3766 | 0.51 | 2025 | 0.57 | 1741 | 0.46 | |
| COPD ^b | | | | | | | <0.001 |
| No | 692,329 | 94.01 | 330,362 | 93.28 | 361,967 | 94.67 | |
| Yes | 44,144 | 5.99 | 23,783 | 6.72 | 20,361 | 5.33 | |
| Chronic kidney disease | | | | | | | <0.001 |
| No | 730,618 | 99.20 | 349,812 | 98.78 | 380,806 | 99.60 | |
| Yes | 5855 | 0.80 | 4333 | 1.22 | 1522 | 0.40 | |
| Obesity | | | | | | | 0.012 |
| No | 733,254 | 99.56 | 352,668 | 99.58 | 380,586 | 99.54 | |
| Yes | 3219 | 0.44 | 1477 | 0.42 | 1742 | 0.46 | |
| Alcoholism | | | | | | | 0.950 |
| No | 736,037 | 99.94 | 353,936 | 99.94 | 382,101 | 99.94 | |
| Yes | 436 | 0.06 | 209 | 0.06 | 227 | 0.06 | |

^a 1 NTD \approx 0.03 USD. ^b Abbreviations: DCSI, diabetes complications severity index; COPD, chronic obstructive pulmonary disease.

3.2. Incident Dementia among New-Onset Patients with DM Who Used Metformin

Table 2 illustrates the risk of dementia after the 3-year follow-up; a total of 7590 patients (1.03%) developed dementia in the 3 years after DM diagnosis. Among patients not treated with metformin, the incidence of dementia was 1.20%. For those treated with metformin, the incidence of dementia was 0.88% for cDDD < 300, 0.59% for cDDD between 300 and 500, and 1.28% for cDDD \geq 500. In terms of the intensity of metformin use, the incident rate of dementia was 0.91% for DDD/month <10, 0.78% for DDD/month 10–25, and 0.62% for DDD/month >25. After adjusting relevant variables, the OR for cDDD < 300 was 0.92 (95% CI: 0.88–0.96), the OR for cDDD = 300–500 was 0.80 (95% CI: 0.56–1.15), and the OR for cDDD \geq 500 was 1.48 (95% CI: 0.48–4.60). Patients with DM who received a DDD/month <10 and developed dementia had an OR of 0.92 (95% CI: 0.87–0.97), DDD/month 10–25 had an OR of 0.92 (95% CI: 0.85–1.00), and DDD/month >25 had an OR of 0.84 (95% CI: 0.60–1.18).

Table 3 displays the risk of incident dementia in the 5-year follow-up. After adjusting for related variables, we determined that patients with DM who received metformin at cDDD < 300, cDDD = 300–500, and cDDD \geq 500 had ORs of developing dementia of 0.94 (95% CI: 0.91–0.97), 0.88 (95% CI: 0.70–1.12), and 1.61 (95% CI: 0.77–3.83), respectively. In terms of metformin use intensity, the ORs for dementia were 0.94 (95% CI: 0.91–0.97), 0.95 (95% CI: 0.90–1.00), and 0.92 (95% CI: 0.74–1.15) for patients who received metformin at <10, 10–25, and >25 DDD/month, respectively. In addition, the risk of dementia increased with age and the DCSI score. In terms of comorbidities, patients with CVD (OR: 1.45, 95% CI:

1.38–1.52), anxiety (OR: 1.44, 95% CI: 1.38–1.50), depression (OR: 1.58, 95% CI: 1.35–1.84), or COPD (OR: 1.08, 95% CI: 1.02–1.13) demonstrated a higher risk of dementia.

Table 2. Risk of dementia in new-onset diabetes mellitus patients in three-year follow-up.

| Variables | Three-Year Follow-Up of Incident Dementia | | | | | | | |
|---------------------------------|---|------|---------|-------------|---------|---------|-------------|---------|
| | Events | | Model 1 | | | Model 2 | | |
| | N | % | OR | 95% CI | p-Value | OR | 95% CI | p-Value |
| Total | 7590 | 1.03 | | | | | | |
| cDDD of metformin use | | | | | | | | |
| Non-users | 4245 | 1.20 | 1 | | | | | |
| DDD < 300 | 3312 | 0.88 | 0.92 | 0.88–0.96 | <0.001 | - | - | - |
| DDD 300–500 | 30 | 0.59 | 0.80 | 0.56–1.15 | 0.235 | - | - | - |
| DDD 500+ | 3 | 1.28 | 1.48 | 0.48–4.60 | 0.496 | - | - | - |
| Intensity of metformin use | | | | | | | | |
| Non-users | 4245 | 1.20 | | | | 1 | | |
| <10 | 2526 | 0.91 | - | - | - | 0.92 | 0.87–0.97 | <0.001 |
| 10~25 | 786 | 0.78 | - | - | - | 0.92 | 0.85–1.00 | 0.037 |
| 25+ | 33 | 0.62 | - | - | - | 0.84 | 0.60–1.18 | 0.317 |
| Gender | | | | | | | | |
| Female | 4115 | 1.09 | 1 | | | 1 | | |
| Male | 3475 | 0.97 | 0.94 | 0.90–0.98 | 0.006 | 0.94 | 0.90–0.98 | 0.006 |
| Age (year) | | | | | | | | |
| 50–64 | 1145 | 0.24 | 1 | | | 1 | | |
| 65–74 | 2981 | 1.64 | 6.27 | 5.85–6.72 | <0.001 | 6.27 | 5.85–6.72 | <0.001 |
| 75+ | 3464 | 4.39 | 15.94 | 14.86–17.09 | <0.001 | 15.94 | 14.86–17.09 | <0.001 |
| Income level (NTD) ^a | | | | | | | | |
| ≤21,000 | 4884 | 1.28 | 1 | | | 1 | | |
| 21,001–33,000 | 1402 | 0.80 | 0.90 | 0.85–0.96 | <0.001 | 0.90 | 0.85–0.96 | <0.001 |
| ≥33,001 | 1304 | 0.72 | 0.91 | 0.86–0.97 | 0.005 | 0.91 | 0.86–0.97 | 0.005 |
| Urbanization | | | | | | | | |
| Level 1 | 1907 | 0.94 | 1 | | | 1 | | |
| Level 2 | 2182 | 0.92 | 0.98 | 0.92–1.04 | 0.430 | 0.98 | 0.92–1.04 | 0.429 |
| Level 3 | 1147 | 1.00 | 0.98 | 0.91–1.06 | 0.586 | 0.98 | 0.91–1.05 | 0.584 |
| Level 4 | 1251 | 1.21 | 1.00 | 0.93–1.08 | 0.909 | 1.00 | 0.93–1.08 | 0.911 |
| Level 5 | 281 | 1.63 | 1.07 | 0.95–1.22 | 0.280 | 1.07 | 0.95–1.22 | 0.279 |
| Level 6 | 458 | 1.46 | 1.07 | 0.97–1.19 | 0.202 | 1.07 | 0.97–1.19 | 0.202 |
| Level 7 | 364 | 1.27 | 0.99 | 0.89–1.11 | 0.883 | 0.99 | 0.89–1.11 | 0.884 |
| DCSI score ^b | | | | | | | | |
| 0 | 3382 | 0.76 | 1 | | | 1 | | |
| 1 | 1595 | 1.01 | 1.06 | 1.00–1.13 | 0.059 | 1.06 | 1.00–1.13 | 0.059 |
| 2+ | 2613 | 1.98 | 1.44 | 1.35–1.53 | <0.001 | 1.44 | 1.35–1.53 | <0.001 |
| Hypertension | | | | | | | | |
| No | 3239 | 0.80 | 1 | | | 1 | | |
| Yes | 4351 | 1.31 | 0.98 | 0.94–1.03 | 0.529 | 0.98 | 0.94–1.03 | 0.529 |
| Hyperlipidemia | | | | | | | | |
| No | 5976 | 1.03 | 1 | | | 1 | | |
| Yes | 1614 | 1.03 | 0.89 | 0.84–0.94 | <0.001 | 0.89 | 0.84–0.94 | <0.001 |
| Hyperuricemia | | | | | | | | |
| No | 7509 | 1.03 | 1 | | | 1 | | |
| Yes | 81 | 1.27 | 1.05 | 0.84–1.30 | 0.692 | 1.05 | 0.84–1.30 | 0.693 |
| Cerebrovascular disease | | | | | | | | |
| No | 6500 | 0.93 | 1 | | | 1 | | |
| Yes | 1090 | 2.98 | 1.53 | 1.42–1.64 | <0.001 | 1.53 | 1.42–1.64 | <0.001 |
| Coronary artery disease | | | | | | | | |
| No | 6535 | 0.97 | 1 | | | 1 | | |
| Yes | 1055 | 1.65 | 0.91 | 0.84–0.97 | 0.007 | 0.91 | 0.84–0.97 | 0.007 |
| Arrhythmia | | | | | | | | |
| No | 7014 | 0.99 | 1 | | | 1 | | |
| Yes | 576 | 1.84 | 1.01 | 0.93–1.11 | 0.785 | 1.01 | 0.93–1.11 | 0.784 |

Table 2. Cont.

| Variables | Three-Year Follow-Up of Incident Dementia | | | | | | | |
|------------------------|---|------|---------|-----------|---------|---------|-----------|---------|
| | Events | | Model 1 | | | Model 2 | | |
| | N | % | OR | 95% CI | p-Value | OR | 95% CI | p-Value |
| Heart failure | | | | | | | | |
| No | 7253 | 1.00 | 1 | | | 1 | | |
| Yes | 337 | 2.42 | 0.95 | 0.85–1.07 | 0.379 | 0.95 | 0.85–1.07 | 0.379 |
| Anxiety | | | | | | | | |
| No | 6331 | 0.95 | 1 | | | 1 | | |
| Yes | 1259 | 1.72 | 1.50 | 1.41–1.59 | <0.001 | 1.50 | 1.41–1.59 | <0.001 |
| Depression | | | | | | | | |
| No | 7496 | 1.02 | 1 | | | 1 | | |
| Yes | 94 | 2.50 | 1.76 | 1.43–2.16 | <0.001 | 1.76 | 1.43–2.16 | <0.001 |
| COPD ^b | | | | | | | | |
| No | 6723 | 0.97 | 1 | | | 1 | | |
| Yes | 867 | 1.96 | 1.11 | 1.03–1.20 | 0.004 | 1.11 | 1.03–1.20 | 0.004 |
| Chronic kidney disease | | | | | | | | |
| No | 7455 | 1.02 | 1 | | | 1 | | |
| Yes | 135 | 2.31 | 0.99 | 0.83–1.18 | 0.927 | 0.99 | 0.83–1.18 | 0.927 |
| Obesity | | | | | | | | |
| No | 7573 | 1.03 | 1 | | | 1 | | |
| Yes | 17 | 0.53 | 0.75 | 0.47–1.21 | 0.237 | 0.75 | 0.47–1.21 | 0.238 |
| Alcoholism | | | | | | | | |
| No | 7583 | 1.03 | 1 | | | 1 | | |
| Yes | 7 | 1.61 | 2.47 | 1.18–5.20 | 0.017 | 2.47 | 1.18–5.19 | 0.017 |

^a 1 NTD \approx 0.03 USD. ^b Abbreviations: DCSI, diabetes complications severity index; COPD, chronic obstructive pulmonary disease.

Table 3. Risk of dementia in new-onset diabetes mellitus patients in five-year follow-up.

| Variables | Five-Year Follow-Up of Incident Dementia | | | | | | | |
|---------------------------------|--|------|---------|-------------|---------|---------|-------------|---------|
| | Events | | Model 1 | | | Model 2 | | |
| | N | % | OR | 95% CI | p-Value | OR | 95% CI | p-Value |
| Total | 15,989 | 2.17 | | | | | | |
| cDDD of metformin use | | | | | | | | |
| Non-users | 8801 | 2.49 | 1 | | | | | |
| DDD < 300 | 7111 | 1.89 | 0.94 | 0.91–0.97 | <0.001 | - | - | - |
| DDD 300–500 | 70 | 1.37 | 0.88 | 0.70–1.12 | 0.304 | - | - | - |
| DDD 500+ | 7 | 2.98 | 1.61 | 0.77–3.38 | 0.207 | - | - | - |
| Intensity of metformin use | | | | | | | | |
| Non-users | 8801 | 2.49 | | | | 1 | | |
| <10 | 5409 | 1.96 | - | - | - | 0.94 | 0.91–0.97 | <0.001 |
| 10~25 | 1702 | 1.70 | - | - | - | 0.95 | 0.90–1.00 | 0.035 |
| 25+ | 77 | 1.44 | - | - | - | 0.92 | 0.74–1.15 | 0.477 |
| Gender | | | | | | | | |
| Female | 8811 | 2.33 | 1 | | | 1 | | |
| Male | 7178 | 2.00 | 0.90 | 0.88–0.93 | <0.001 | 0.90 | 0.88–0.93 | <0.001 |
| Age (year) | | | | | | | | |
| 50–64 | 2657 | 0.56 | 1 | | | 1 | | |
| 65–74 | 6487 | 3.57 | 5.88 | 5.62–6.16 | <0.001 | 5.88 | 5.62–6.16 | <0.001 |
| 75+ | 6845 | 8.67 | 13.92 | 13.28–14.59 | <0.001 | 13.92 | 13.28–14.60 | <0.001 |
| Income level (NTD) ^a | | | | | | | | |
| ≤21,000 | 10,557 | 2.77 | 1 | | | 1 | | |
| 21,001–33,000 | 2692 | 1.54 | 0.78 | 0.75–0.82 | <0.001 | 0.78 | 0.75–0.82 | <0.001 |
| ≥33,001 | 2740 | 1.52 | 0.87 | 0.84–0.91 | <0.001 | 0.87 | 0.84–0.91 | <0.001 |

Table 3. Cont.

| Variables | Five-Year Follow-Up of Incident Dementia | | | | | | | |
|-------------------------|--|------|---------|-----------|---------|---------|-----------|---------|
| | Events | | Model 1 | | | Model 2 | | |
| | N | % | OR | 95% CI | p-Value | OR | 95% CI | p-Value |
| Urbanization | | | | | | | | |
| Level 1 | 3915 | 1.93 | 1 | | | 1 | | |
| Level 2 | 4633 | 1.95 | 1.01 | 0.97–1.05 | 0.731 | 1.01 | 0.97–1.05 | 0.733 |
| Level 3 | 2397 | 2.09 | 1.00 | 0.95–1.05 | 0.997 | 1.00 | 0.95–1.05 | 0.994 |
| Level 4 | 2720 | 2.64 | 1.07 | 1.02–1.13 | 0.006 | 1.07 | 1.02–1.13 | 0.007 |
| Level 5 | 572 | 3.31 | 1.08 | 0.99–1.18 | 0.091 | 1.08 | 0.99–1.18 | 0.090 |
| Level 6 | 972 | 3.10 | 1.12 | 1.04–1.20 | 0.003 | 1.12 | 1.04–1.20 | 0.003 |
| Level 7 | 780 | 2.73 | 1.05 | 0.97–1.13 | 0.264 | 1.05 | 0.97–1.13 | 0.263 |
| DCSI score ^b | | | | | | | | |
| 0 | 7311 | 1.64 | 1 | | | 1 | | |
| 1 | 3510 | 2.23 | 1.09 | 1.04–1.13 | <0.001 | 1.09 | 1.04–1.13 | <0.001 |
| 2+ | 5168 | 3.92 | 1.38 | 1.32–1.44 | <0.001 | 1.38 | 1.32–1.44 | <0.001 |
| Hypertension | | | | | | | | |
| No | 6976 | 1.72 | 1 | | | 1 | | |
| Yes | 9013 | 2.72 | 0.97 | 0.94–1.01 | 0.112 | 0.97 | 0.94–1.01 | 0.112 |
| Hyperlipidemia | | | | | | | | |
| No | 12,577 | 2.17 | 1 | | | 1 | | |
| Yes | 3412 | 2.17 | 0.91 | 0.87–0.94 | <0.001 | 0.91 | 0.87–0.94 | <0.001 |
| Hyperuricemia | | | | | | | | |
| No | 15,821 | 2.17 | 1 | | | 1 | | |
| Yes | 168 | 2.63 | 1.05 | 0.91–1.23 | 0.498 | 1.05 | 0.91–1.23 | 0.499 |
| Cerebrovascular disease | | | | | | | | |
| No | 13,905 | 1.99 | 1 | | | 1 | | |
| Yes | 2084 | 5.69 | 1.45 | 1.38–1.52 | <0.001 | 1.45 | 1.38–1.52 | <0.001 |
| Coronary artery disease | | | | | | | | |
| No | 13,744 | 2.04 | 1 | | | 1 | | |
| Yes | 2245 | 3.52 | 0.95 | 0.91–1.00 | 0.049 | 0.95 | 0.91–1.00 | 0.049 |
| Arrhythmia | | | | | | | | |
| No | 14,787 | 2.10 | 1 | | | 1 | | |
| Yes | 1202 | 3.83 | 1.05 | 0.99–1.11 | 0.129 | 1.05 | 0.99–1.11 | 0.129 |
| Heart failure | | | | | | | | |
| No | 15,331 | 2.12 | 1 | | | 1 | | |
| Yes | 658 | 4.72 | 0.93 | 0.85–1.01 | 0.071 | 0.93 | 0.85–1.01 | 0.071 |
| Anxiety | | | | | | | | |
| No | 13,457 | 2.03 | 1 | | | 1 | | |
| Yes | 2532 | 3.46 | 1.44 | 1.38–1.50 | <0.001 | 1.44 | 1.38–1.50 | <0.001 |
| Depression | | | | | | | | |
| No | 15,820 | 2.16 | 1 | | | 1 | | |
| Yes | 169 | 4.49 | 1.58 | 1.35–1.84 | <0.001 | 1.58 | 1.35–1.84 | <0.001 |
| COPD ^b | | | | | | | | |
| No | 14,266 | 2.06 | 1 | | | 1 | | |
| Yes | 1723 | 3.90 | 1.08 | 1.02–1.13 | 0.004 | 1.08 | 1.02–1.13 | 0.004 |
| Chronic kidney disease | | | | | | | | |
| No | 15,745 | 2.16 | 1 | | | 1 | | |
| Yes | 244 | 4.17 | 0.92 | 0.81–1.05 | 0.194 | 0.92 | 0.81–1.05 | 0.195 |
| Obesity | | | | | | | | |
| No | 15,943 | 2.17 | 1 | | | 1 | | |
| Yes | 46 | 1.43 | 0.94 | 0.71–1.26 | 0.699 | 0.95 | 0.71–1.26 | 0.701 |
| Alcoholism | | | | | | | | |
| No | 15,979 | 2.17 | 1 | | | 1 | | |
| Yes | 10 | 2.29 | 1.69 | 0.91–3.14 | 0.098 | 1.69 | 0.91–3.14 | 0.098 |

^a 1 NTD \approx 0.03 USD. ^b Abbreviations: DCSI, diabetes complications severity index; COPD, chronic obstructive pulmonary disease.

4. Discussion

There have been limited large-scale epidemiological studies examining the potential link between metformin intake and dementia risk among T2DM patients. However, in our study, we found that metformin use was associated with increased dementia risk among patients with T2DM. Our results indicated that patients receiving <300 cDDD of metformin and <10 and 10–25 DDD/month exhibited a reduced risk of dementia at both the 3- and 5-year follow-ups. Conversely, we observed no protective effect against dementia for cDDD > 300 and >25 DDD/month during the 3- and 5-year follow-ups among patients with T2DM. Additionally, we found that among patients with T2DM who received metformin, an increased risk of dementia was associated with older age and a higher DCSI score.

Our results indicated that patients with DM who received a metformin at cDDD < 300, <10 DDD/month, or 10–25 DDD/month exhibited a lower risk of dementia. Several mechanisms explaining the beneficial role of metformin in the prophylaxis of dementia have been proposed. Metformin may have neuroprotective effects among older patients with T2DM. Activation of adenosine monophosphate-activated protein kinase (AMPK) by metformin could partly help in realizing the minor protective effect on improving cognitive function. Metformin is an AMPK activator that suppresses hepatic glucose production and increases insulin-stimulated glucose uptake [30]. AMPK plays a major physiological role in regulating the plasticity of the hippocampal synapse and in cognitive impairment [31]. Impaired AMPK function is associated with DM and can affect neurological disorders, such as AD [32]. Metformin also plays a neuroprotective role through the AMPK/mTOR signaling pathway to control inflammatory conditions and improve the oxidative status [33]. Metformin decreased histopathological changes in AD [34], improved cognitive performance and neuronal survival in the hippocampus of animals with diabetes, and can significantly reduce neuroinflammation [35]. Metformin may also promote angiogenesis and neurogenesis in the brain [33]. Several epidemiological studies have revealed that metformin use was associated with a lower risk of dementia [13,14] and better cognitive function [15]. A meta-analysis study reported that metformin use was associated with a lower prevalence of cognitive impairment and fewer cases of incident dementia [12].

One study reported that the use of metformin for longer than 2 years was associated with a lower incidence of ND among elderly patients with T2DM; however, metformin exposure did not significantly affect the development of ND during the first 2 years [8]. Our results revealed that the protective role in dementia afforded by metformin was nonsignificant at the 3-year and 5-year follow-ups at a cDDD of 300–500 and >500 and at 10–25 and >25 DDD/month. Studies have suggested possible harmful mechanisms between metformin use and dementia risk [16,17,22]. Metformin also increased the β -amyloid accumulation [22]. However, the claim that metformin plays a protective role during dementia pathogenesis has been challenged in several longitudinal studies. One study from the United Kingdom revealed that long-term metformin use is associated with an increased risk of AD [19]. Another study indicated that metformin use can induce vitamin B12 deficiencies in a dose-dependent manner [36]. A study from Australia found that metformin-induced vitamin B12 deficiencies were associated with cognitive impairment among patients with DM [20]. A retrospective cohort study in Taiwan demonstrated that metformin use among patients with T2DM may be a risk factor for ND, including dementia and Parkinson's disease [21]. Several studies have indicated that this effect could be due to vitamin B12 deficiencies that are potentiated by metformin usage and that contribute to cognitive impairment [18,37,38]. Several studies have expressed that metformin use was associated with lower plasma vitamin B12 levels [18,39,40]. A meta-analysis study revealed that a negative association between metformin use and vitamin B12 levels in patients with T2DM [18], and greater cumulative exposure to metformin and a longer duration of metformin treatment were associated with a higher risk of vitamin B12 deficiency [41]; a metformin dosage of >2000 mg/day increased the risk of vitamin B12 deficiency 22 times [42]. T2DM patients undergoing metformin treatment, particularly those taking metformin at a large dosage (>2000 mg/day) and for a long duration (>4 years),

should be regularly screened for serum vitamin B12 levels [43]. However, the mechanism underlying vitamin B12 deficiency in patients with long-term metformin use remains unclear. Nevertheless, the proposed underlying mechanisms include an alteration in the small intestine's motility, leading to small intestinal bacterial overgrowth and subsequent inhibition of vitamin B12 calcium-dependent intrinsic factor complex absorption [44]; malabsorption leads to a decreased serum vitamin B12 plasma level. Although metformin use may lower the risk of dementia [34,35,45], the B12 deficiencies associated with long-term metformin use and high doses of metformin exhibited no protective role in dementia. Therefore, long-term metformin use is associated with vitamin B12 deficiencies, which may counteract the potential protective benefit in dementia. Vitamin B12 deficiencies play a role in the risk of dementia in patients with T2DM who receive long-term metformin treatment and higher doses. The results of our study are consistent with those of an animal study demonstrating that a low metformin dose (100 mg/kg) may improve scopolamine-induced cognitive impairment, whereas higher doses of metformin resulted in no harmful effect [46]. A lower metformin dose may have been associated with milder DM severity, which could have affected the dementia risk. However, the actual underlying mechanisms between the metformin dosage and the risk of dementia remain unclear, and prospective clinical trials should be conducted in the future.

The DCSI is a useful tool for predicting the risk of hospitalization and mortality among patients with DM [47]. The adapted DCSI (aDCSI) has seven categories of complications and is a modified version of a risk assessment scheme that does not include medical laboratory values [47,48]. Patients with new-onset DM and with higher aDCSI scores exhibited a higher risk of developing dementia [49]. Our study indicated that patients with DM who had higher DCSI scores demonstrated a higher risk of developing dementia. The DCSI may be used as an indicator for estimating the risk of dementia.

Our findings indicated that older patients with DM exhibited a higher risk of dementia, especially among patients with DM who were above 75 years old. Aging is the largest risk factor for the development and progression of dementia. Among older patients, multiple pathologies contribute to the progression of dementia, including dementia with Lewy bodies and vascular changes [50]. Metformin-related vitamin B12 deficiencies have been documented for over 40 years [18], and both T2DM and B12 deficiencies increase with age [51].

Depression is more common among patients with cognitive impairments. Depression is a key risk factor of dementia and significant cognitive decline among patients with DM [52]. We determined that depression was associated with an increased risk of incident dementia. These findings were consistent with previous studies, in which depression was associated with accelerated cognitive decline among patients with T2DM [53]. A meta-analysis revealed that anxiety is significantly associated with an increased risk of dementia [54]. Anxiety has also been recognized as a potentially modifiable dementia risk factor. Additionally, CVD is a major cause of cognitive impairment and dementia among older patients [55]. Finally, COPD may also contribute to dementia. A systematic and meta-analysis study indicated that patients with COPD exhibit a higher risk of dementia [56]. COPD may lead to chronic hypoxemia and pulmonary encephalopathy, which may considerably affect brain dysfunction [57]. The prevalence of cognitive decline among patients with COPD was associated with the severity of the COPD case [58].

Our study has several strengths. First, our study used a population-based design. Patients were selected from the total population of Taiwan; thus, the sample was representative. We believe that the combination of the NHIRD with multiple databases could be used as a powerful research engine. The population-based design may also minimize the selection bias that is common in observational studies. Second, the characteristics of the database provided sufficient statistical power to investigate the risk of dementia among patients with T2DM and who were treated with metformin. Third, we assessed patients 3 and 5 years after their T2DM diagnosis. We categorized metformin use based on cumulative defined daily doses (cDDD) as <300, 300–500, and >500, and based on monthly

dose intensity as <10, 10–25, and >25 DDD. Additionally, we explored the influence of various comorbidities on the risk of dementia in patients with T2DM.

Our study has some limitations to note. First, we did not have access to lifestyle data, such as tobacco use, alcohol consumption, and physical activity, which may impact the development and progression of dementia. Second, the ICD-9-CM and ICD-10-CM codes used to identify T2DM severity and dementia do not provide precise information; therefore, we were unable to conduct a severity-based subgroup analysis. For instance, the NHIRD database lacks information on HbA1c. Third, using the NHIRD led to some validity concerns, such as the accuracy of diagnosis codes; the NHIRD does not contain records of medical conditions. However, the NHI implements various measures to maintain the validity and accuracy of the NHIRD. For example, the NHI randomly reviews medical charts and conducts patient interviews to verify the accuracy of diagnoses. These rigorous processes help ensure the reliability and accuracy of the NHIRD.

5. Conclusions

The present study did not reveal a dose–response relationship of metformin use with incident dementia in DM patients. Specifically, patients with DM who received lower doses of metformin and had a lower metformin use intensity showed a comparatively reduced risk of dementia. However, higher doses of metformin with higher intensity exhibited no protective role in dementia. The mechanisms between metformin dosage and incident dementia remain unclear. It is necessary to conduct further prospective clinical trials with adequate statistical tests to evaluate the actual underlying mechanisms between metformin dosage and the risk of dementia.

Author Contributions: Study conception and design: K.-H.H., Y.-F.T., C.B.L., S.-Y.G., T.-H.T., N.-J.C. and C.-Y.L. Data acquisition: K.-H.H. and C.-Y.L. Data analysis and demonstration: K.-H.H., T.-H.T. and C.-Y.L. Original draft preparation: K.-H.H., Y.-F.T., C.B.L., S.-Y.G., T.-H.T., N.-J.C. and C.-Y.L. All the authors involved in drafting or revising the article approved of the submitted version. All authors have read and agreed to the published version of the manuscript.

Funding: This research was supported by the Ministry of Science and Technology Taiwan (MOST 111-2410-H-039-003-MY3), China Medical University Taiwan (CMU110-MF-120, CMU110-S-16, and CMU111-MF-111), and the Chung Shan Medical University Hospital, Taiwan (CSH-2020-C-006). The funders had no role in study design, data collection and analysis, decision to publish, or preparation of the manuscript.

Institutional Review Board Statement: The database of the present study was provided by the Health and Welfare Data Science Center, Ministry of Health and Welfare, Taiwan (HWDC, MOHW). The database is an anonymous database, and the HWDC assigns scrambled random identification numbers to protect the privacy of insured patients. The requirement for informed consent was waived. The study protocol was approved by the Central Regional Research Ethics Committee of China Medical University, Taiwan (No. CRREC-109-011).

Informed Consent Statement: Not applicable.

Data Availability Statement: The National Health Insurance Database used to support the findings of this study were provided by the Health and Welfare Data Science Center, Ministry of Health and Welfare (HWDC, MOHW), under license and so cannot be made freely available. Requests for access to these data should be made to HWDC (<https://dep.mohw.gov.tw/dos/np-2497-113.html>, accessed on 20 February 2023).

Acknowledgments: Our special thanks to China Medical University Taiwan, Chung Shan Medical University Taiwan, Chung Shan Medical University Hospital Taiwan, and the Health Data Science Center, China Medical University Hospital, for providing administrative, technical, and funding support that contributed to the completion of this study. This study is based in part on data from the NHIRD. The interpretation and conclusions contained herein do not represent those of the National Health Insurance Administration, Ministry of Health and Welfare, or National Health Research Institutes.

Conflicts of Interest: The authors declare no conflict of interest.

References

- Erkkinen, M.G.; Kim, M.O.; Geschwind, M.D. Clinical Neurology and Epidemiology of the Major Neurodegenerative Diseases. *Cold Spring Harb. Perspect Biol.* **2018**, *10*, a033118. [\[CrossRef\]](#) [\[PubMed\]](#)
- Perl, D.P. Neuropathology of Alzheimer's disease. *Mt. Sinai. J. Med.* **2010**, *77*, 32–42. [\[CrossRef\]](#) [\[PubMed\]](#)
- Bomfim, T.R.; Forny-Germano, L.; Sathler, L.B.; Brito-Moreira, J.; Houzel, J.C.; Decker, H.; Silverman, M.A.; Kazi, H.; Melo, H.M.; McClean, P.L.; et al. An anti-diabetes agent protects the mouse brain from defective insulin signaling caused by Alzheimer's disease-associated Aβ oligomers. *J. Clin. Invest.* **2012**, *122*, 1339–1353. [\[CrossRef\]](#)
- Hiltunen, M.; Khandelwal, V.K.; Yaluri, N.; Tiilikainen, T.; Tusa, M.; Koivisto, H.; Krzisch, M.; Vepsäläinen, S.; Mäkinen, P.; Kemppainen, S.; et al. Contribution of genetic and dietary insulin resistance to Alzheimer phenotype in APP/PS1 transgenic mice. *J. Cell Mol. Med.* **2012**, *16*, 1206–1222. [\[CrossRef\]](#) [\[PubMed\]](#)
- Talbot, K.; Wang, H.Y.; Kazi, H.; Han, L.Y.; Bakshi, K.P.; Stucky, A.; Fuino, R.L.; Kawaguchi, K.R.; Samoyedny, A.J.; Wilson, R.S.; et al. Demonstrated brain insulin resistance in Alzheimer's disease patients is associated with IGF-1 resistance, IRS-1 dysregulation, and cognitive decline. *J. Clin. Invest.* **2012**, *122*, 1316–1338. [\[CrossRef\]](#)
- Ferreira, L.S.S.; Fernandes, C.S.; Vieira, M.N.N.; De Felice, F.G. Insulin Resistance in Alzheimer's Disease. *Front. Neurosci.* **2018**, *12*, 830. [\[CrossRef\]](#)
- Li, X.; Song, D.; Leng, S.X. Link between type 2 diabetes and Alzheimer's disease: From epidemiology to mechanism and treatment. *Clin. Interv. Aging* **2015**, *10*, 549–560. [\[CrossRef\]](#)
- Shi, Q.; Liu, S.; Fonseca, V.A.; Thethi, T.K.; Shi, L. Effect of metformin on neurodegenerative disease among elderly adult US veterans with type 2 diabetes mellitus. *BMJ Open* **2019**, *9*, e024954. [\[CrossRef\]](#)
- Soukas, A.A.; Hao, H.; Wu, L. Metformin as Anti-Aging Therapy: Is It for Everyone? *Trends Endocrinol. Metab.* **2019**, *30*, 745–755. [\[CrossRef\]](#)
- Han, J.; Li, Y.; Liu, X.; Zhou, T.; Sun, H.; Edwards, P.; Gao, H.; Yu, F.S.; Qiao, X. Metformin suppresses retinal angiogenesis and inflammation in vitro and in vivo. *PLoS ONE* **2018**, *13*, e0193031. [\[CrossRef\]](#)
- Ahuja, S.; Uniyal, A.; Akhtar, A.; Sah, S.P. Alpha lipoic acid and metformin alleviates experimentally induced insulin resistance and cognitive deficit by modulation of TLR2 signalling. *Pharmacol. Rep.* **2019**, *71*, 614–623. [\[CrossRef\]](#) [\[PubMed\]](#)
- Campbell, J.M.; Stephenson, M.D.; de Courten, B.; Chapman, I.; Bellman, S.M.; Aromataris, E. Metformin Use Associated with Reduced Risk of Dementia in Patients with Diabetes: A Systematic Review and Meta-Analysis. *J. Alzheimer's Dis.* **2018**, *65*, 1225–1236. [\[CrossRef\]](#) [\[PubMed\]](#)
- Orkaby, A.R.; Cho, K.; Cormack, J.; Gagnon, D.R.; Driver, J.A. Metformin vs sulfonylurea use and risk of dementia in US veterans aged ≥65 years with diabetes. *Neurology* **2017**, *89*, 1877–1885. [\[CrossRef\]](#) [\[PubMed\]](#)
- Hsu, C.C.; Wahlqvist, M.L.; Lee, M.S.; Tsai, H.N. Incidence of dementia is increased in type 2 diabetes and reduced by the use of sulfonylureas and metformin. *J. Alzheimer's Dis.* **2011**, *24*, 485–493. [\[CrossRef\]](#) [\[PubMed\]](#)
- Herath, P.M.; Cherbuin, N.; Eramudugolla, R.; Anstey, K.J. The Effect of Diabetes Medication on Cognitive Function: Evidence from the PATH Through Life Study. *Biomed. Res. Int.* **2016**, *2016*, 7208429. [\[CrossRef\]](#) [\[PubMed\]](#)
- Chen, Y.; Zhou, K.; Wang, R.; Liu, Y.; Kwak, Y.D.; Ma, T.; Thompson, R.C.; Zhao, Y.; Smith, L.; Gasparini, L.; et al. Antidiabetic drug metformin (GlucophageR) increases biogenesis of Alzheimer's amyloid peptides via up-regulating BACE1 transcription. *Proc. Natl. Acad. Sci. USA* **2009**, *106*, 3907–3912. [\[CrossRef\]](#)
- Barini, E.; Antico, O.; Zhao, Y.; Asta, F.; Tucci, V.; Catelani, T.; Marotta, R.; Xu, H.; Gasparini, L. Metformin promotes tau aggregation and exacerbates abnormal behavior in a mouse model of tauopathy. *Mol. Neurodegener.* **2016**, *11*, 16. [\[CrossRef\]](#)
- Chapman, L.E.; Darling, A.L.; Brown, J.E. Association between metformin and vitamin B12 deficiency in patients with type 2 diabetes: A systematic review and meta-analysis. *Diabetes Metab.* **2016**, *42*, 316–327. [\[CrossRef\]](#)
- Imfeld, P.; Bodmer, M.; Jick, S.S.; Meier, C.R. Metformin, other antidiabetic drugs, and risk of Alzheimer's disease: A population-based case-control study. *J. Am. Geriatr. Soc.* **2012**, *60*, 916–921. [\[CrossRef\]](#)
- Moore, E.M.; Mander, A.G.; Ames, D.; Kotowicz, M.A.; Carne, R.P.; Brodaty, H.; Woodward, M.; Boundy, K.; Ellis, K.A.; Bush, A.I.; et al. Increased risk of cognitive impairment in patients with diabetes is associated with metformin. *Diabetes Care* **2013**, *36*, 2981–2987. [\[CrossRef\]](#)
- Kuan, Y.C.; Huang, K.W.; Lin, C.L.; Hu, C.J.; Kao, C.H. Effects of metformin exposure on neurodegenerative diseases in elderly patients with type 2 diabetes mellitus. *Prog. Neuropsychopharmacol. Biol. Psychiatry* **2017**, *79*, 77–83. [\[CrossRef\]](#) [\[PubMed\]](#)
- Picone, P.; Nuzzo, D.; Caruana, L.; Messina, E.; Barera, A.; Vasto, S.; Di Carlo, M. Metformin increases APP expression and processing via oxidative stress, mitochondrial dysfunction and NF-κB activation: Use of insulin to attenuate metformin's effect. *Biochim. Biophys. Acta* **2015**, *1853*, 1046–1059. [\[CrossRef\]](#) [\[PubMed\]](#)
- Sridhar, G.R.; Lakshmi, G.; Nagamani, G. Emerging links between type 2 diabetes and Alzheimer's disease. *World J. Diabetes* **2015**, *6*, 744–751. [\[CrossRef\]](#) [\[PubMed\]](#)
- Ha, J.; Choi, D.W.; Kim, K.J.; Cho, S.Y.; Kim, H.; Kim, K.Y.; Koh, Y.; Nam, C.M.; Kim, E. Association of metformin use with Alzheimer's disease in patients with newly diagnosed type 2 diabetes: A population-based nested case-control study. *Sci. Rep.* **2021**, *11*, 24069. [\[CrossRef\]](#) [\[PubMed\]](#)
- Hsieh, C.Y.; Su, C.C.; Shao, S.C.; Sung, S.F.; Lin, S.J.; Kao Yang, Y.H.; Lai, E.C. Taiwan's National Health Insurance Research Database: Past and future. *Clin. Epidemiol.* **2019**, *11*, 349–358. [\[CrossRef\]](#)

26. Lai, S.W.; Liao, K.F.; Lin, C.L.; Lin, C.C.; Lin, C.H. Longitudinal data of multimorbidity and polypharmacy in older adults in Taiwan from 2000 to 2013. *Biomedicine* **2020**, *10*, 1–4. [\[CrossRef\]](#)
27. Wang, C.Y.; Wu, Y.L.; Sheu, W.H.; Tu, S.T.; Hsu, C.C.; Tai, T.Y. Accountability and utilization of diabetes care from 2005 to 2014 in Taiwan. *J. Formos. Med. Assoc.* **2019**, *118* (Suppl. S2), S111–S121. [\[CrossRef\]](#)
28. Grimmsmann, T.; Himmel, W. Discrepancies between prescribed and defined daily doses: A matter of patients or drug classes? *Eur. J. Clin. Pharmacol.* **2011**, *67*, 847–854. [\[CrossRef\]](#)
29. Wellington, K. Rosiglitazone/Metformin. *Drugs* **2005**, *65*, 1581–1592. [\[CrossRef\]](#)
30. Ferrannini, E. The target of metformin in type 2 diabetes. *N. Engl. J. Med.* **2014**, *371*, 1547–1548. [\[CrossRef\]](#)
31. Marinangeli, C.; Didier, S.; Ahmed, T.; Caillerez, R.; Domise, M.; Laloux, C.; Begard, S.; Carrier, S.; Colin, M.; Marchetti, P.; et al. AMP-Activated Protein Kinase Is Essential for the Maintenance of Energy Levels during Synaptic Activation. *iScience* **2018**, *9*, 1–13. [\[CrossRef\]](#)
32. Seixas da Silva, G.S.; Melo, H.M.; Lourenco, M.V.; Lyra, E.S.N.M.; de Carvalho, M.B.; Alves-Leon, S.V.; de Souza, J.M.; Klein, W.L.; da-Silva, W.S.; Ferreira, S.T.; et al. Amyloid-beta oligomers transiently inhibit AMP-activated kinase and cause metabolic defects in hippocampal neurons. *J. Biol. Chem.* **2017**, *292*, 7395–7406. [\[CrossRef\]](#)
33. Zhao, M.; Li, X.W.; Chen, Z.; Hao, F.; Tao, S.X.; Yu, H.Y.; Cheng, R.; Liu, H. Neuro-Protective Role of Metformin in Patients with Acute Stroke and Type 2 Diabetes Mellitus via AMPK/Mammalian Target of Rapamycin (mTOR) Signaling Pathway and Oxidative Stress. *Med. Sci. Monit.* **2019**, *25*, 2186–2194. [\[CrossRef\]](#) [\[PubMed\]](#)
34. Li, J.; Deng, J.; Sheng, W.; Zuo, Z. Metformin attenuates Alzheimer’s disease-like neuropathology in obese, leptin-resistant mice. *Pharmacol. Biochem. Behav.* **2012**, *101*, 564–574. [\[CrossRef\]](#) [\[PubMed\]](#)
35. Oliveira, W.H.; Nunes, A.K.; Franca, M.E.; Santos, L.A.; Los, D.B.; Rocha, S.W.; Barbosa, K.P.; Rodrigues, G.B.; Peixoto, C.A. Effects of metformin on inflammation and short-term memory in streptozotocin-induced diabetic mice. *Brain Res.* **2016**, *1644*, 149–160. [\[CrossRef\]](#)
36. Liu, Q.; Li, S.; Quan, H.; Li, J. Vitamin B12 status in metformin treated patients: Systematic review. *PLoS ONE* **2014**, *9*, e100379. [\[CrossRef\]](#) [\[PubMed\]](#)
37. Moore, E.; Mander, A.; Ames, D.; Carne, R.; Sanders, K.; Watters, D. Cognitive impairment and vitamin B12: A review. *Int. Psychogeriatr.* **2012**, *24*, 541–556. [\[CrossRef\]](#) [\[PubMed\]](#)
38. Wong, C.W.; Leung, C.S.; Leung, C.P.; Cheng, J.N. Association of metformin use with vitamin B12 deficiency in the institutionalized elderly. *Arch. Gerontol. Geriatr.* **2018**, *79*, 57–62. [\[CrossRef\]](#)
39. Huang, K.H.; Lee, C.H.; Cheng, Y.D.; Gau, S.Y.; Tsai, T.H.; Chung, N.J.; Lee, C.Y. Correlation between long-term use of metformin and incidence of NAFLD among patients with type 2 diabetes mellitus: A real-world cohort study. *Front. Endocrinol.* **2022**, *13*, 1027484. [\[CrossRef\]](#)
40. Huang, K.H.; Chang, Y.L.; Gau, S.Y.; Tsai, T.H.; Lee, C.Y. Dose-Response Association of Metformin with Parkinson’s Disease Odds in Type 2 Diabetes Mellitus. *Pharmaceutics* **2022**, *14*, 946. [\[CrossRef\]](#)
41. Khattar, D.; Khaliq, F.; Vaney, N.; Madhu, S.V. Is Metformin-Induced Vitamin B12 Deficiency Responsible for Cognitive Decline in Type 2 Diabetes? *Indian J. Psychol. Med.* **2016**, *38*, 285–290. [\[CrossRef\]](#) [\[PubMed\]](#)
42. Ko, S.H.; Ko, S.H.; Ahn, Y.B.; Song, K.H.; Han, K.D.; Park, Y.M.; Ko, S.H.; Kim, H.S. Association of vitamin B12 deficiency and metformin use in patients with type 2 diabetes. *J. Korean Med. Sci.* **2014**, *29*, 965–972. [\[CrossRef\]](#)
43. Alharbi, T.J.; Tourkmani, A.M.; Abdelhay, O.; Alkhashan, H.I.; Al-Asmari, A.K.; Bin Rashed, A.M.; Abuhaimed, S.N.; Mohammed, N.; AlRasheed, A.N.; AlHarbi, N.G. The association of metformin use with vitamin B12 deficiency and peripheral neuropathy in Saudi individuals with type 2 diabetes mellitus. *PLoS ONE* **2018**, *13*, e0204420. [\[CrossRef\]](#) [\[PubMed\]](#)
44. Damiao, C.P.; Rodrigues, A.O.; Pinheiro, M.F.; Cruz, R.A.F.; Cardoso, G.P.; Taboada, G.F.; Lima, G.A. Prevalence of vitamin B12 deficiency in type 2 diabetic patients using metformin: A cross-sectional study. *Sao Paulo Med. J.* **2016**, *134*, 473–479. [\[CrossRef\]](#) [\[PubMed\]](#)
45. Kickstein, E.; Krauss, S.; Thornhill, P.; Rutschow, D.; Zeller, R.; Sharkey, J.; Williamson, R.; Fuchs, M.; Kohler, A.; Glossmann, H.; et al. Biguanide metformin acts on tau phosphorylation via mTOR/protein phosphatase 2A (PP2A) signaling. *Proc. Natl. Acad. Sci. USA* **2010**, *107*, 21830–21835. [\[CrossRef\]](#) [\[PubMed\]](#)
46. Mostafa, D.K.; Ismail, C.A.; Ghareeb, D.A. Differential metformin dose-dependent effects on cognition in rats: Role of Akt. *Psychopharmacology* **2016**, *233*, 2513–2524. [\[CrossRef\]](#)
47. Young, B.A.; Lin, E.; Von Korff, M.; Simon, G.; Ciechanowski, P.; Ludman, E.J.; Everson-Stewart, S.; Kinder, L.; Oliver, M.; Boyko, E.J.; et al. Diabetes complications severity index and risk of mortality, hospitalization, and healthcare utilization. *Am. J. Manag. Care* **2008**, *14*, 15–23.
48. Chang, H.Y.; Weiner, J.P.; Richards, T.M.; Bleich, S.N.; Segal, J.B. Validating the adapted Diabetes Complications Severity Index in claims data. *Am. J. Manag. Care* **2012**, *18*, 721–726.
49. Chiu, W.C.; Ho, W.C.; Liao, D.L.; Lin, M.H.; Chiu, C.C.; Su, Y.P.; Chen, P.C.; Health Data Analysis in Taiwan Research Group. Progress of Diabetic Severity and Risk of Dementia. *J. Clin. Endocrinol. Metab.* **2015**, *100*, 2899–2908. [\[CrossRef\]](#)
50. LoGiudice, D.; Watson, R. Dementia in older people: An update. *Intern. Med. J.* **2014**, *44*, 1066–1073. [\[CrossRef\]](#) [\[PubMed\]](#)
51. Reinstatler, L.; Qi, Y.P.; Williamson, R.S.; Garn, J.V.; Oakley, G.P., Jr. Association of biochemical B(1)(2) deficiency with metformin therapy and vitamin B(1)(2) supplements: The National Health and Nutrition Examination Survey, 1999–2006. *Diabetes Care* **2012**, *35*, 327–333. [\[CrossRef\]](#) [\[PubMed\]](#)

52. Jorm, A.F. Is depression a risk factor for dementia or cognitive decline? A review. *Gerontology* **2000**, *46*, 219–227. [[CrossRef](#)] [[PubMed](#)]
53. Sullivan, M.D.; Katon, W.J.; Lovato, L.C.; Miller, M.E.; Murray, A.M.; Horowitz, K.R.; Bryan, R.N.; Gerstein, H.C.; Marcovina, S.; Akpunonu, B.E.; et al. Association of depression with accelerated cognitive decline among patients with type 2 diabetes in the ACCORD-MIND trial. *JAMA Psychiatry* **2013**, *70*, 1041–1047. [[CrossRef](#)] [[PubMed](#)]
54. Santabarbara, J.; Lipnicki, D.M.; Olaya, B.; Villagrasa, B.; Bueno-Notivol, J.; Nuez, L.; Lopez-Anton, R.; Gracia-Garcia, P. Does Anxiety Increase the Risk of All-Cause Dementia? An Updated Meta-Analysis of Prospective Cohort Studies. *J. Clin. Med.* **2020**, *9*, 1791. [[CrossRef](#)]
55. Knopman, D.S. Dementia and cerebrovascular disease. *Mayo Clin. Proc.* **2006**, *81*, 223–230. [[CrossRef](#)]
56. Wang, Y.; Li, X.; Wei, B.; Tung, T.H.; Tao, P.; Chien, C.W. Association between Chronic Obstructive Pulmonary Disease and Dementia: Systematic Review and Meta-Analysis of Cohort Studies. *Dement. Geriatr. Cogn. Dis. Extra* **2019**, *9*, 250–259. [[CrossRef](#)]
57. Barnes, P.J. The cytokine network in asthma and chronic obstructive pulmonary disease. *J. Clin. Investig.* **2008**, *118*, 3546–3556. [[CrossRef](#)]
58. Torres-Sanchez, I.; Rodriguez-Alzueta, E.; Cabrera-Martos, I.; Lopez-Torres, I.; Moreno-Ramirez, M.P.; Valenza, M.C. Cognitive impairment in COPD: A systematic review. *J. Bras. Pneumol.* **2015**, *41*, 182–190. [[CrossRef](#)]

Disclaimer/Publisher’s Note: The statements, opinions and data contained in all publications are solely those of the individual author(s) and contributor(s) and not of MDPI and/or the editor(s). MDPI and/or the editor(s) disclaim responsibility for any injury to people or property resulting from any ideas, methods, instructions or products referred to in the content.