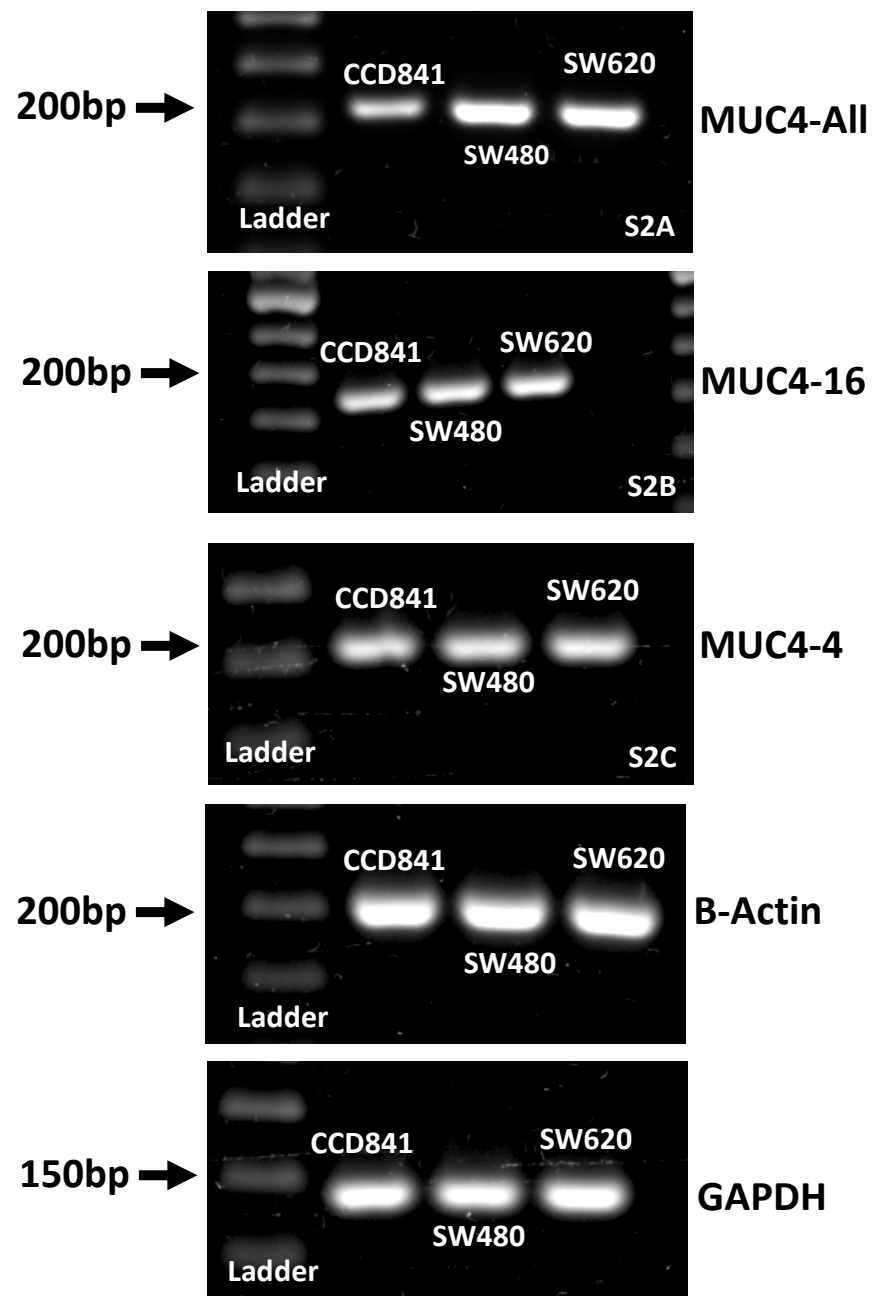


Supplementary Figure S1: EndPoint PCR for the primers ADAM12-All (S1A), ADAM12-13 (S1B), and ADAM12-245 (S1C). The primers B-Actin and GAPDH were expression and loading controls. The templates were the cell lines: CCD841, SW480, and SW620.



Supplementary Figure S2: EndPoint PCR for the primers MUC4-All (S2A), MUC4-16 (S2B), and MUC4-4 (S2C). The primers B-Actin and GAPDH were expression and loading controls. The templates were the cell lines: CCD841, SW480, and SW620.