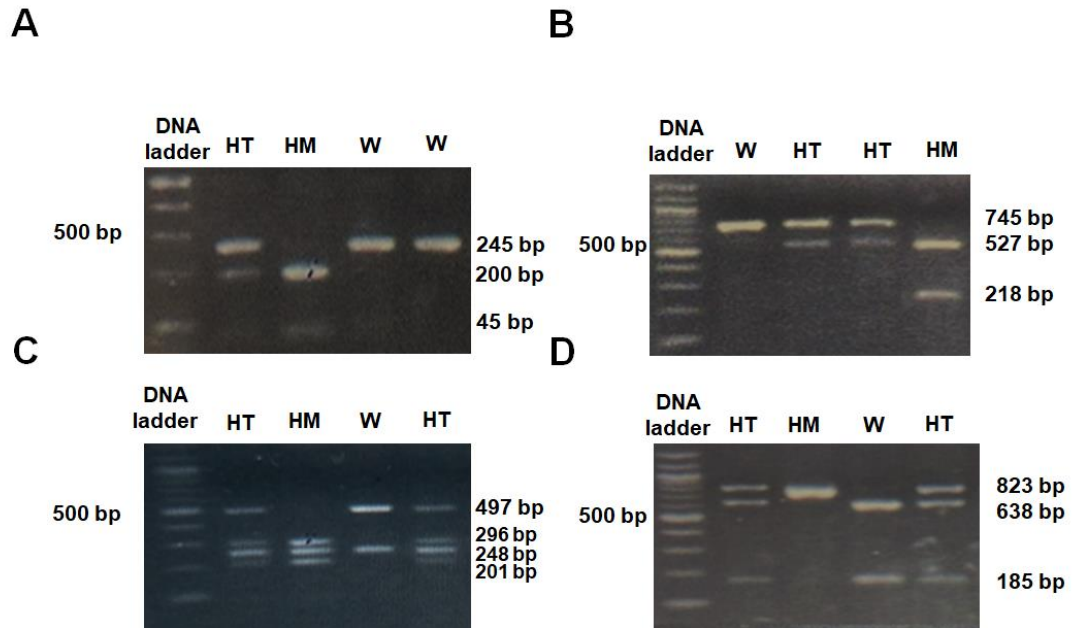


Supplementary Figure S1. The PCR products of *VDR* gene fragments containing *FoxI* (A), *ApaI* and *TaqI* (B), and *BsmI* (C). The numbers 1 to 3 represents random samples of patients used in this study.



Supplementary Figure S2. Genotyping of *VDR* major genetic alleles using PCR-FRLP. (A) represents the genotype of *FoxI*, (B) represents the genotype of *Apal*, (C) represents the genotype of *TaqI*, and (D) represents the genotype of *BsmI* genetic allele. "W" is the abbreviation of the wild genotype, "HT" is the abbreviation of heterozygous genotype, and "HM" is the abbreviation of homozygous genotype.