

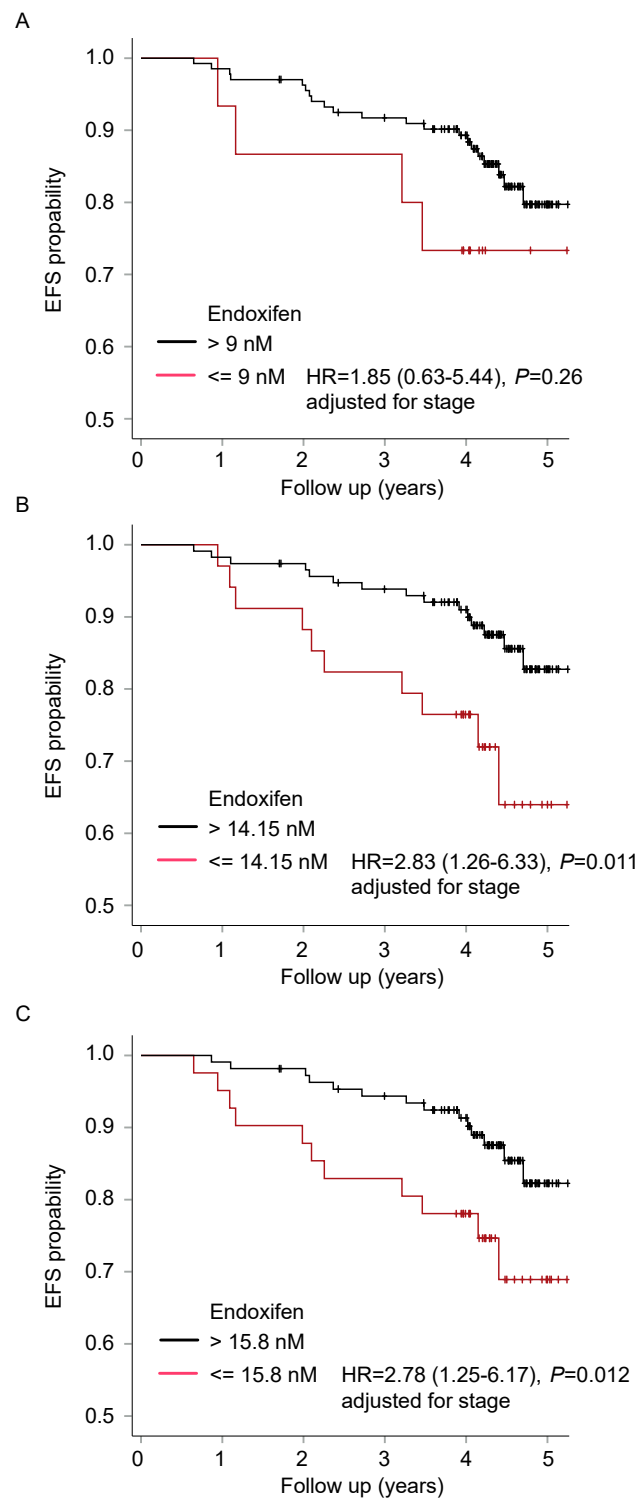
Supplementary Table S1. Univariate Cox regression analyses for an association of factors with event-free survival.

Variable(s)	Value	Total (n)	Events [n (%)]	HR	95% CI	p
Age (years)	≥ 69	28	7 (25)	1 (Reference)		
	50–69	59	7 (11.9)	0.61	0.24–1.57	0.31
	≤49	61	11 (18)	0.38	0.13–1.08	0.07
Stage	I	50	3 (6.0)	1 (Reference)		
	II	74	12 (16.2)	2.88	0.81–10.24	0.10
	III	24	10 (41.7)	10.38	2.82–38.14	<0.001
Molecular subtype	Luminal A	48	5 (10.4)	1 (Reference)		
	Luminal B	82	16 (19.5)	2.11	0.77–5.76	0.14
	HER2	18	4 (22.2)	2.14	0.57–7.98	0.26
Ki67 (%)	≤14	49	5 (10.2)	1 (Reference)		
	>14	99	20 (20.2)	2.21	0.83–5.89	0.11
CYP2D6 phenotype class	EM/UM	97	19 (19.6)	1 (Reference)		
	IM/PM	52	6 (11.5)	0.53	0.21–1.33	0.18
Chemotherapy	No	55	8 (14.5)	1 (Reference)		
	Yes	94	17 (18.1)	1.25	0.54–2.90	0.60
BMI (kg/m ²)	≤30	61	10 (16.4)	1 (Reference)		
	>30	26	5 (19.2)	1.32	0.45–3.87	0.61
Adherence	Low	16	1 (6.3)	1 (Reference)		
	High/ Intermedi- ary	116	19 (16.4)	2.91	0.39–22.07	0.291

Supplementary Table S2. CYP2D6 alleles and their interpretation, activity scores, and CYP2D6 phenotypes.

CYP2D6 genotypes		CYP2D6 phenotypes	
Alleles (haplotypes)	Enzymatic activity of alleles	CYP2D6 activity score	CYP2D6 phenotype
*1XN	UM	UM/EM (3.0)	UM
*1, *2	EM	EM/EM (2.0)	EM
		EM/IM (1.5)	
*9, *10, *17, *29, *41	IM	EM/PM (1.0)	IM
		IM/IM (0.75)	
		PM/IM (0.5)	
*3, *4, *5, *6, *7, *8	PM	PM/PM (0.0)	PM

Abbreviations: *1XN, gene duplication; UM, ultrarapid metabolizer; EM, extensive metabolizer; IM, intermediate metabolizer; PM, poor metabolizer.



Supplementary Figure S1. Kaplan-Meier curves of (Z)-endoxifen stratified by three thresholds reported from literature. (A) 9 nM [10]; (B) 14.15 nM [9]; (C) 15.8 nM [11]. Hazard ratios and 95% confidence intervals (given in brackets) for below versus above threshold were calculated by multivariate Cox proportional hazard regression, adjusted for stage.