

# Supplementary Information

## Recombinant TBEV protein E of the Siberian subtype is a candidate antigen in the ELISA test system for differential diagnostics

Victoria Baryshnikova <sup>1,†</sup>, Yuriy Turchenko <sup>1,‡</sup>, Ksenia Tuchynskaya <sup>1,†</sup>, Ilmira Belyaletdinova <sup>1</sup>, Alexander Butenko <sup>2</sup>, Alena Dereventsova <sup>1</sup>, Georgy Ignatiev <sup>1</sup>, Ivan Kholodilov <sup>1</sup>, Victor Larichev <sup>2</sup>, Ekaterina Lyapeykova <sup>3</sup>, Anastasiya Rogova <sup>1</sup>, Armen Shakaryan <sup>1,4</sup>, Anna Shishova <sup>1,5</sup>, Anatoly Gmyl <sup>1,‡</sup> and Galina Karganova <sup>1,5,\*</sup>

1 FSASI "Chumakov FSC R&D IBP RAS" (Institute of Poliomyelitis), Moscow 108819, Russia

2 D.I. Ivanovsky Institute of Virology Division of N.F. Gamaleya National Research Center of Epidemiology and Microbiology of the Ministry of Health of the Russian Federation, Moscow 123098, Russia

3 Infectious Clinical Hospital No. 1 of the Moscow City Health Department, Moscow 125310, Russia

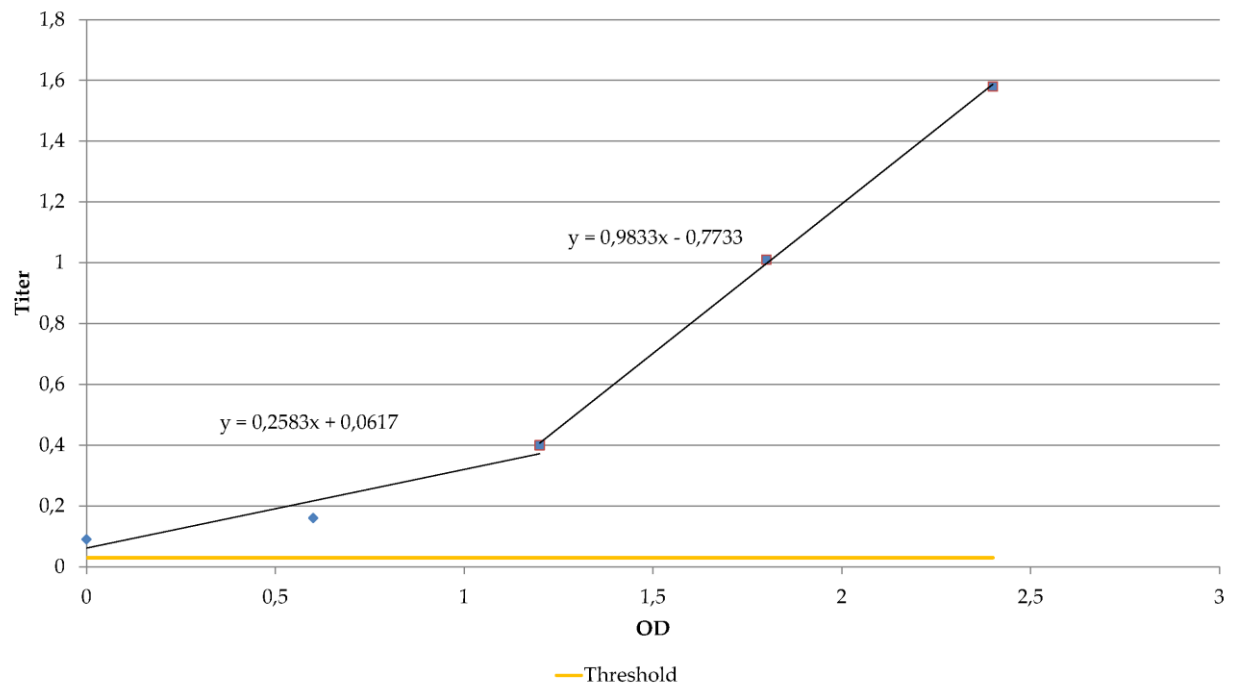
4 Pirogov Russian National Research Medical University, Department of Infectious Diseases in Children, Faculty of Pediatrics, Moscow 117997, Russia

5 Institute of Translational Medicine and Biotechnology, Sechenov First Moscow State Medical University, Moscow 119991, Russia

\* Correspondence: karganova@bk.ru

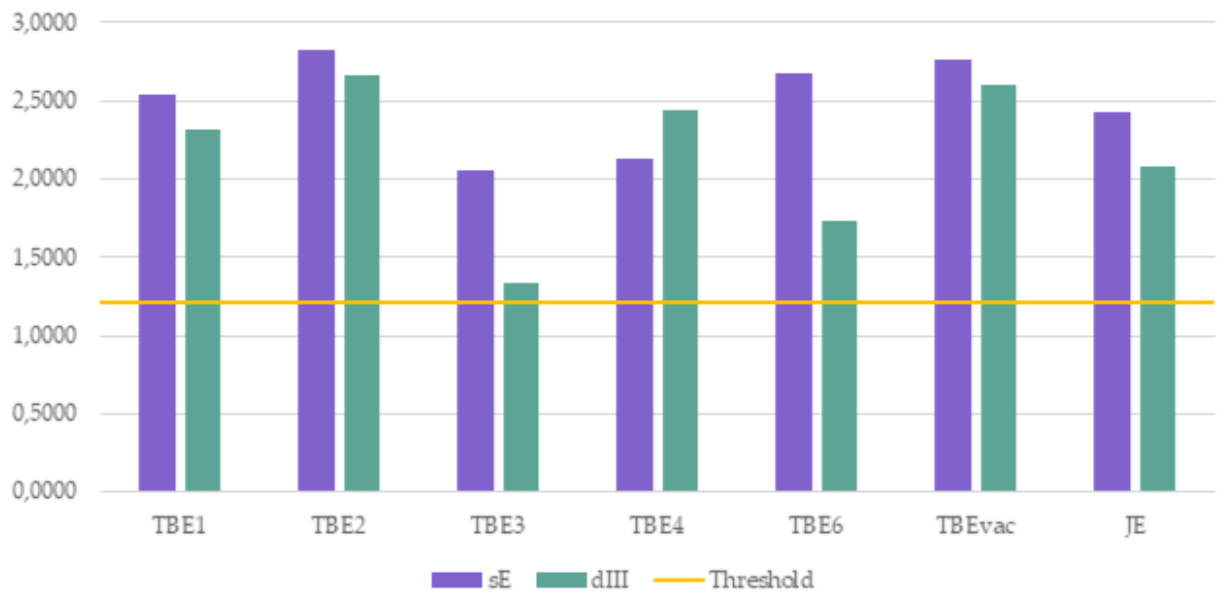
† These authors contributed equally to this work.

‡ Deceased

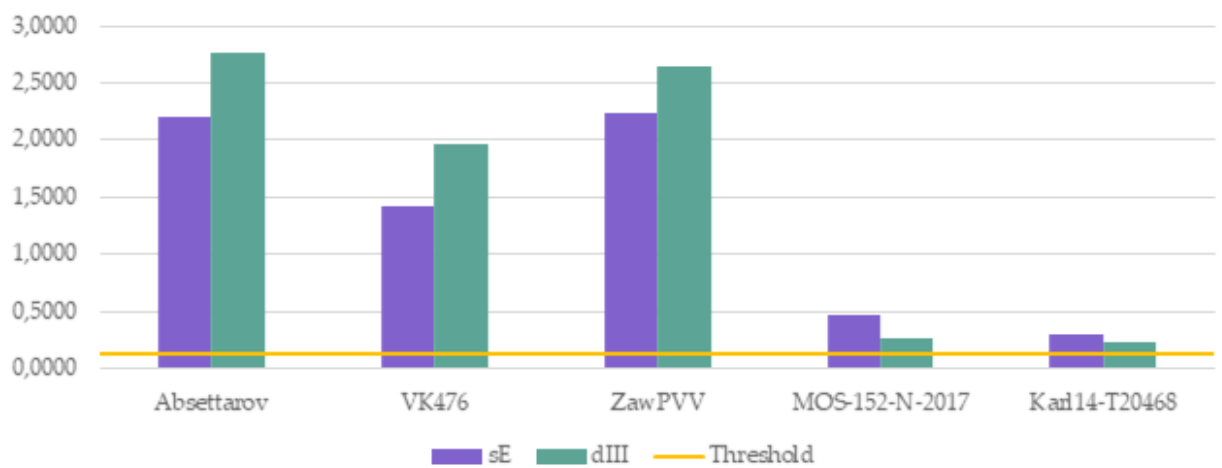


**Figure S1.** An example of a calibration curve to calculate the titer of the determined serum of the patient vaccinated against TBEV by 'Tick-E-Vac' vaccine.

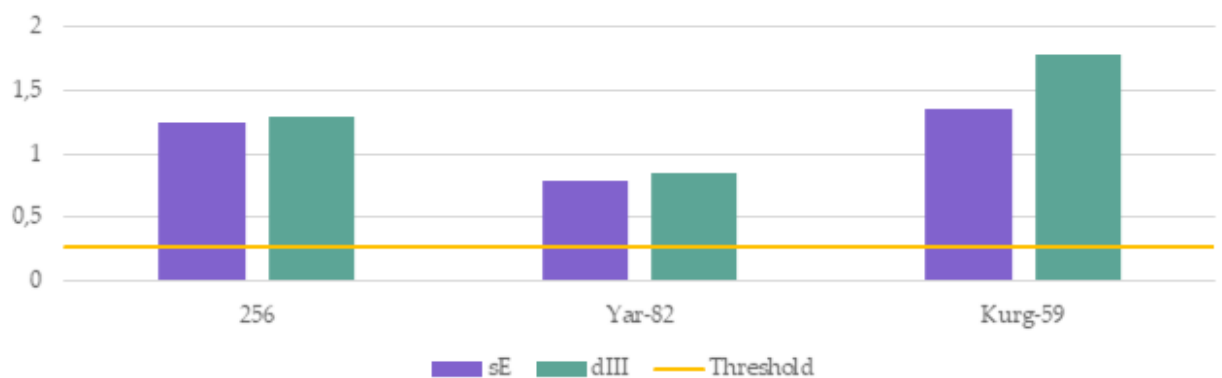
### Some of positive sera from table 3 (humans)



### Positive sera from table 7 (mice)



### Positive sera from table 7 (rabbits)



**Figure S2.** OD values of positive to presence of TBEV antibodies serum from people, mice and rabbits obtained from different ELISA, showing the difference in the antibody response to different proteins