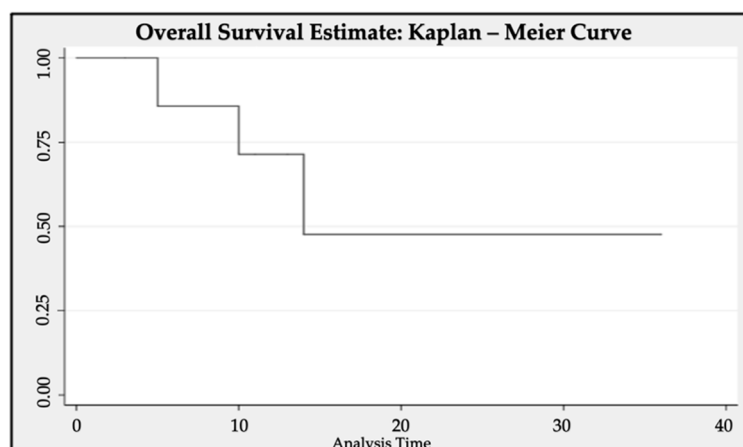
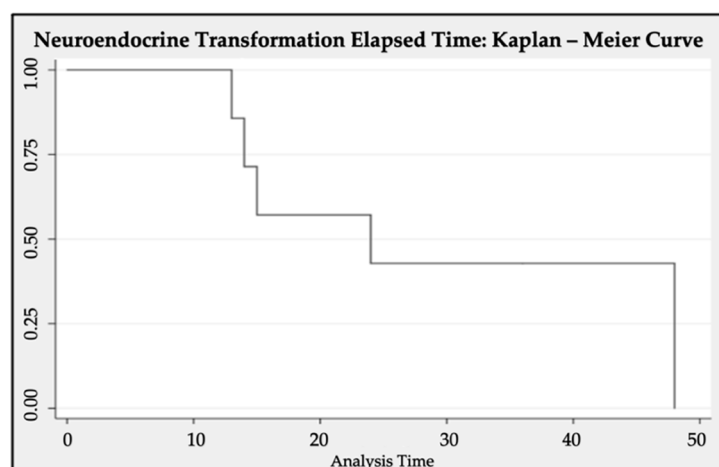


**Table S1 Supplementary.** Neuroendocrine immunohistochemical markers.

IMMUNOHISTOCHEMICAL MARKERS			N (%)
<b>Performed in all patients</b>			
Synaptophysin (+)			8 (100%)
Chromogranin (+)			8 (100%)
<b>Not performed in all patients</b>			
<b>Other analysed markers</b>	<b>6 (75%)</b>	<b>Patients with no additional markers</b>	<b>2 (25%)</b>
PSA (-)	3 (50%)		
PSA (-) & Somatostatin (+)	1 (16.67%)		
CD56 (+), CKAE3 (+)	1 (16.67%)		
NKX3 (-) in NEC	1 (16.67%)		



**Figure S1 Supplmenetary. Overall suvival Curves after confirmation of Neurendocrine differentiation**



**Figure S2 Supplementary. Time elapsed since diagnostic of prostate adenocarcinoma to Neurendocrine differentiation**