

Figure S1. Balance between the groups before and after propensity score matching of AJOURMC cohort for all cancer occurrence.

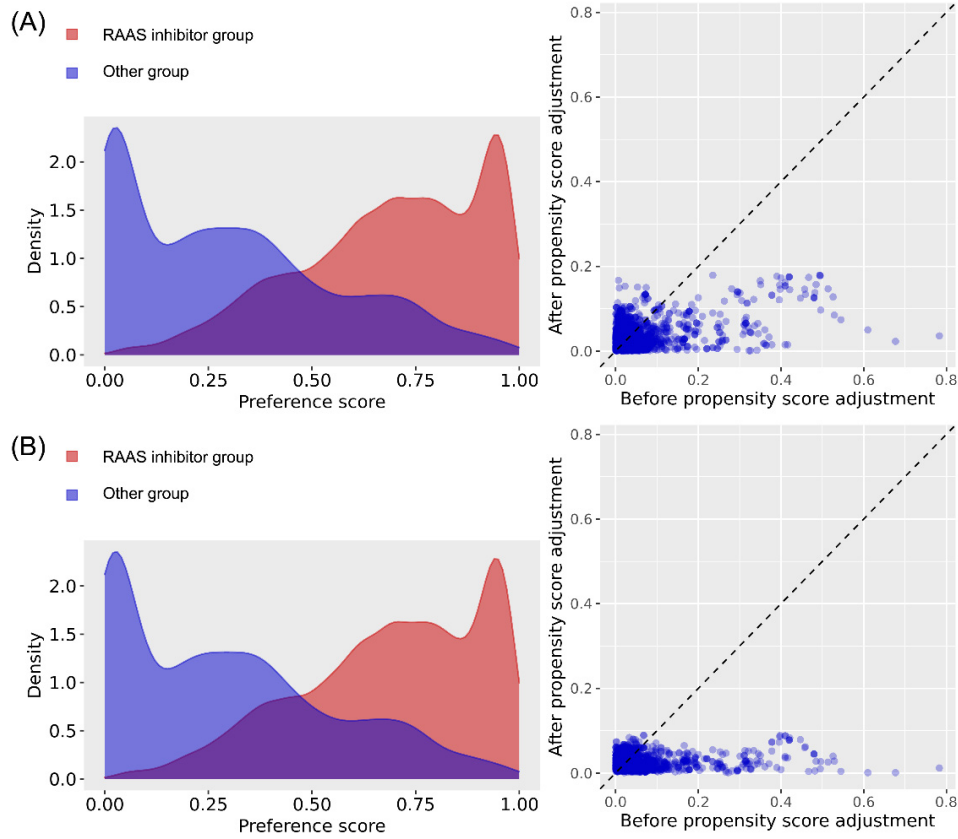


Figure S2. Balance between the groups before and after propensity score matching of DCMC cohort for all cancer occurrence.

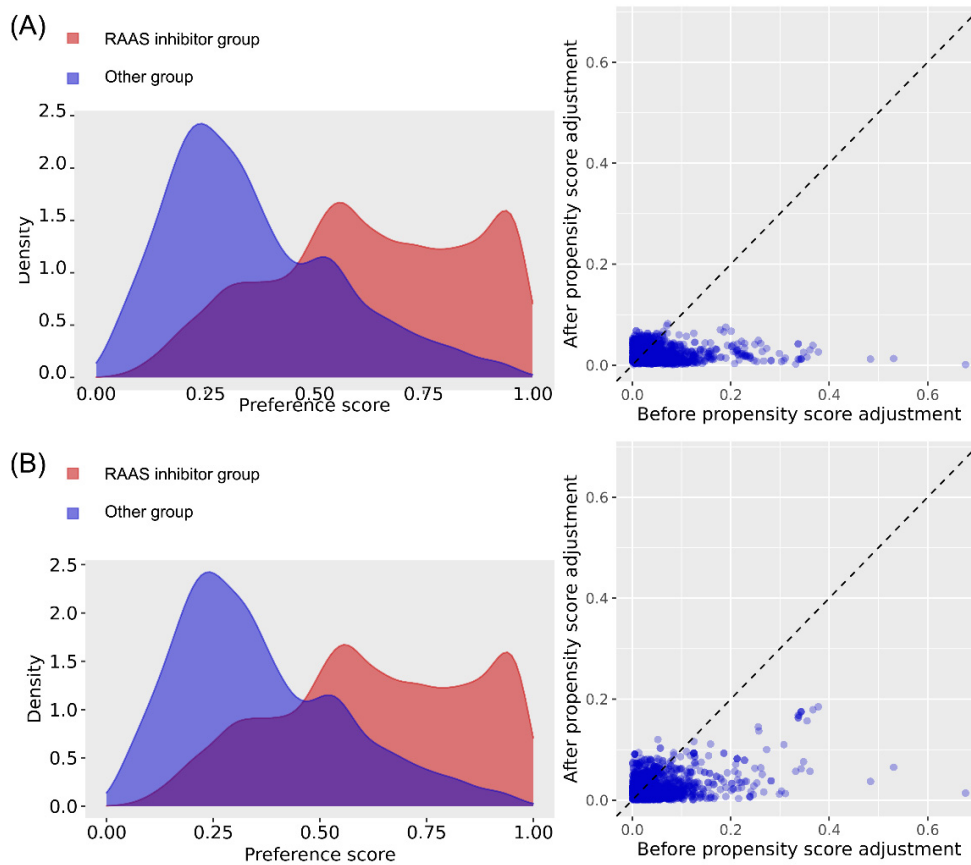


Figure S3. Balance between the groups before and after propensity score matching of KDH cohort for all cancer occurrence.

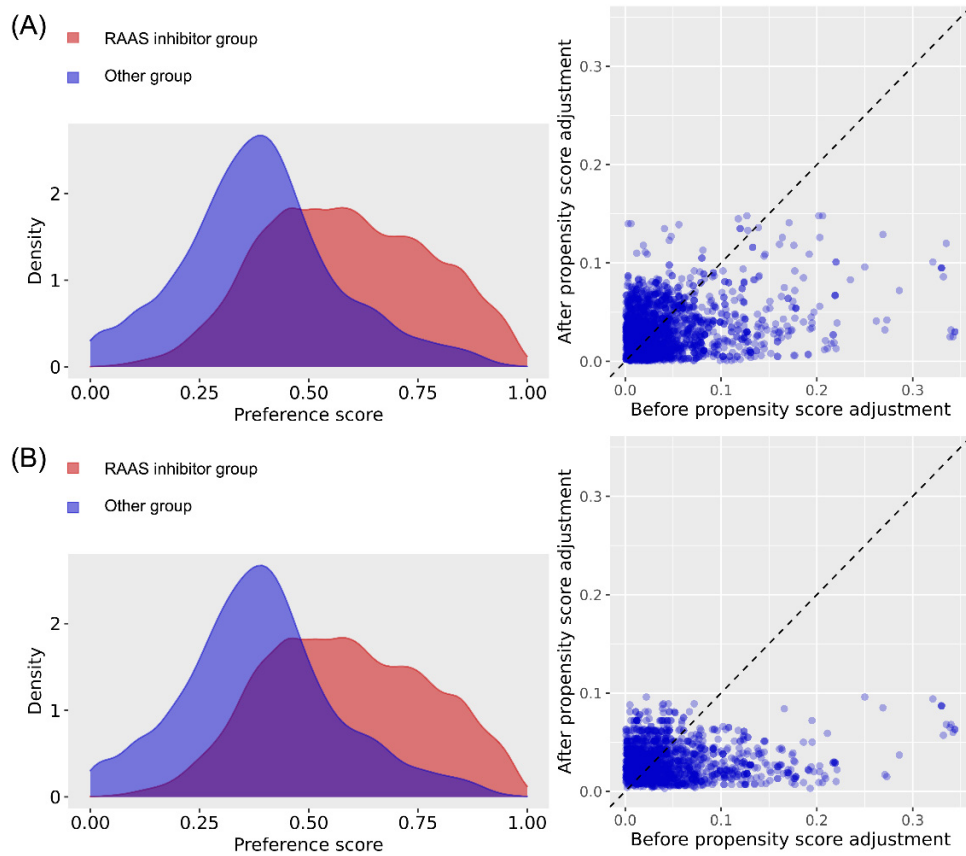


Figure S4. Balance between the groups before and after propensity score matching of KHNMC cohort for all cancer occurrence.

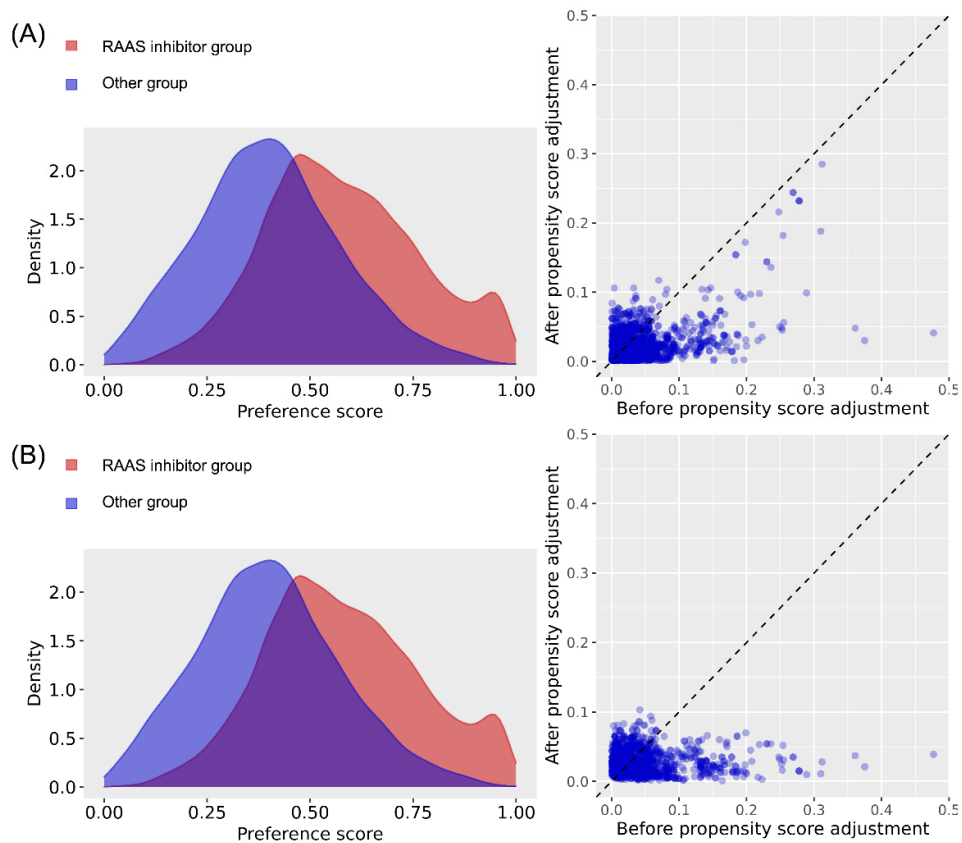


Figure S5. Balance between the groups before and after propensity score matching of KWMC cohort for all cancer occurrence.

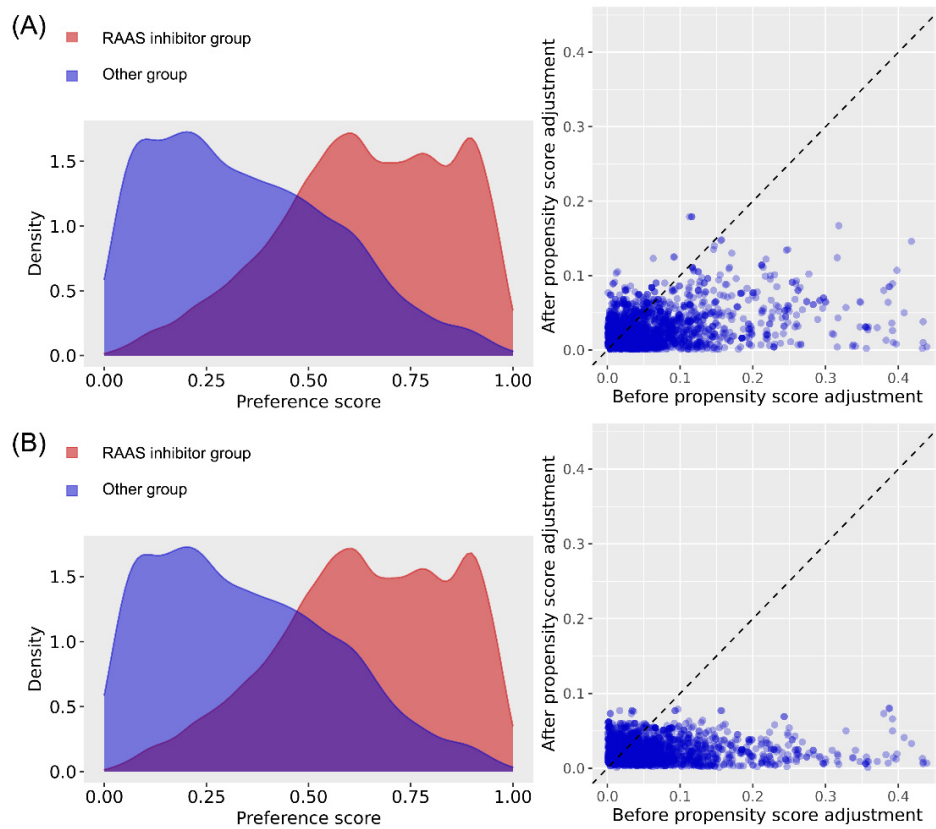


Figure S6. Balance between the groups before and after propensity score matching of PNUH cohort for all cancer occurrence.

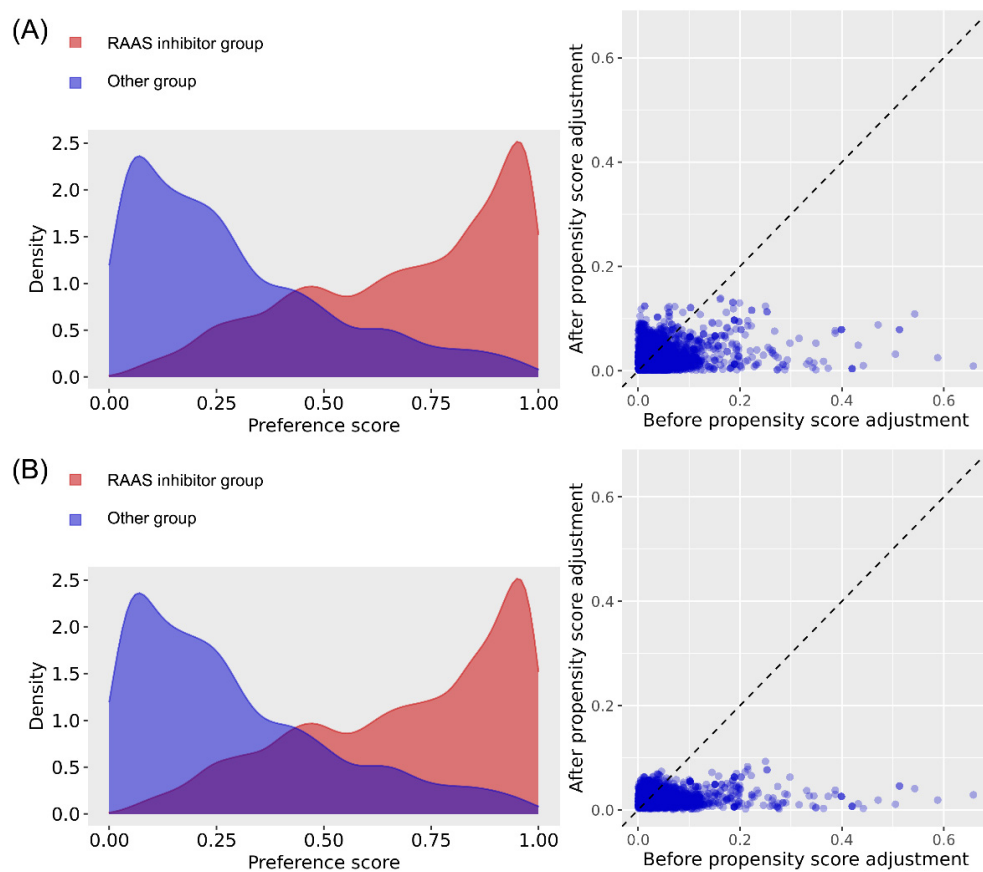


Figure S7. Balance between the groups before and after propensity score matching of WKUH cohort for all cancer occurrence.

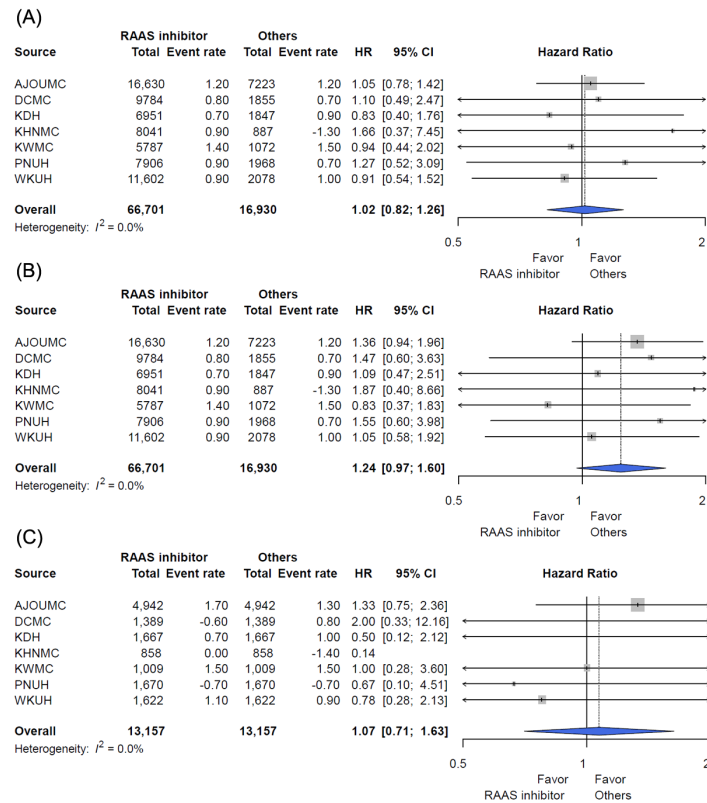


Figure S8. Incidence rate of breast cancer in the entire cohort (A) adjusted for sex and age, (B) propensity score stratified and (C) propensity-score matched population.

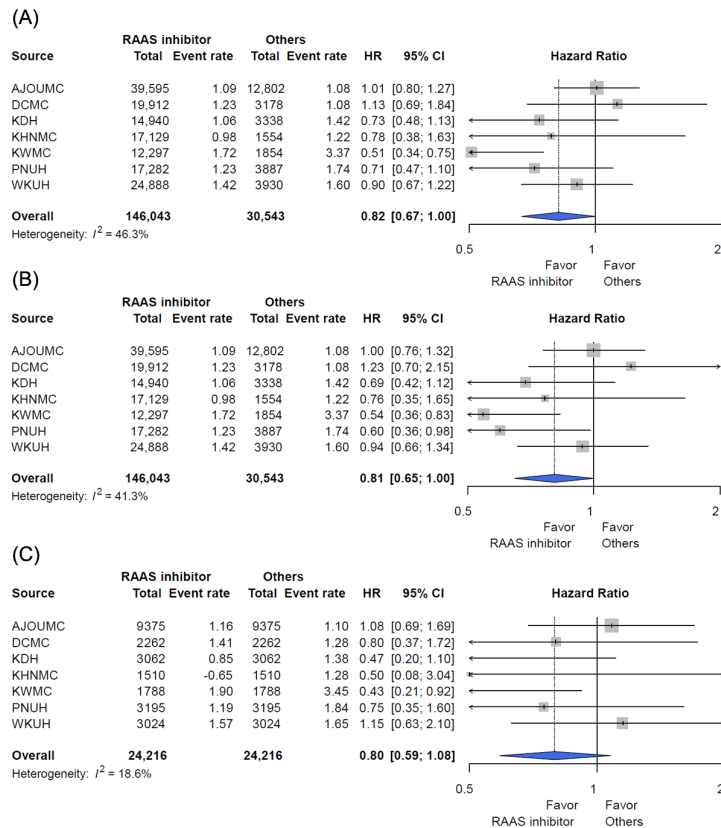


Figure S9. Incidence rate of colon cancer in the entire cohort (A) adjusted for sex and age, (B) propensity score stratified and (C) propensity-score matched population.

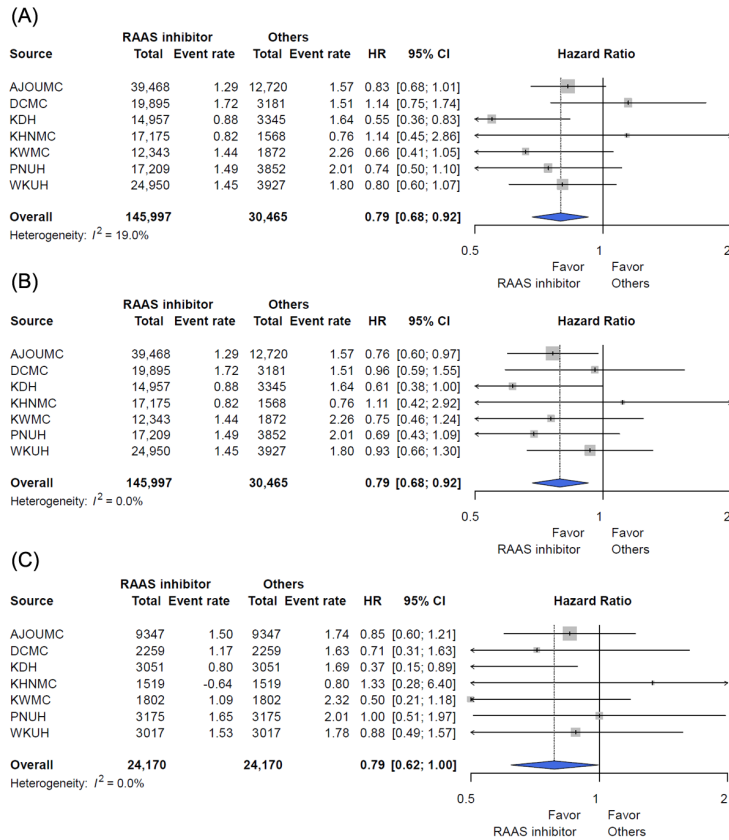


Figure S10. Incidence rate of gastric cancer in the entire cohort (A) adjusted for sex and age, (B) propensity score stratified and (C) propensity-score matched population.

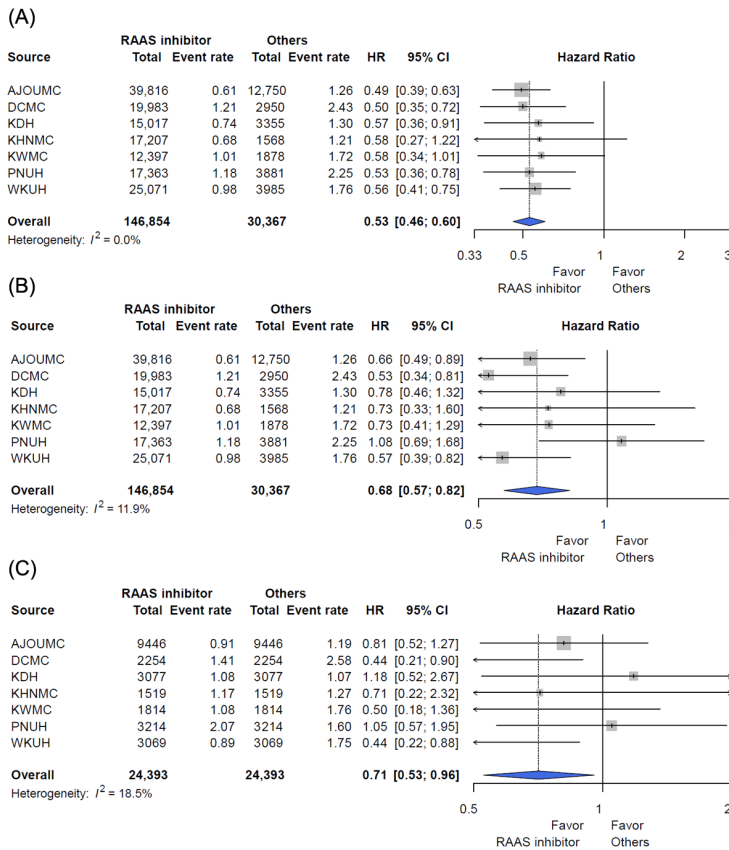


Figure S11. Incidence rate of liver cancer in the entire cohort (A) adjusted for sex and age, (B) propensity score stratified and (C) propensity-score matched population.

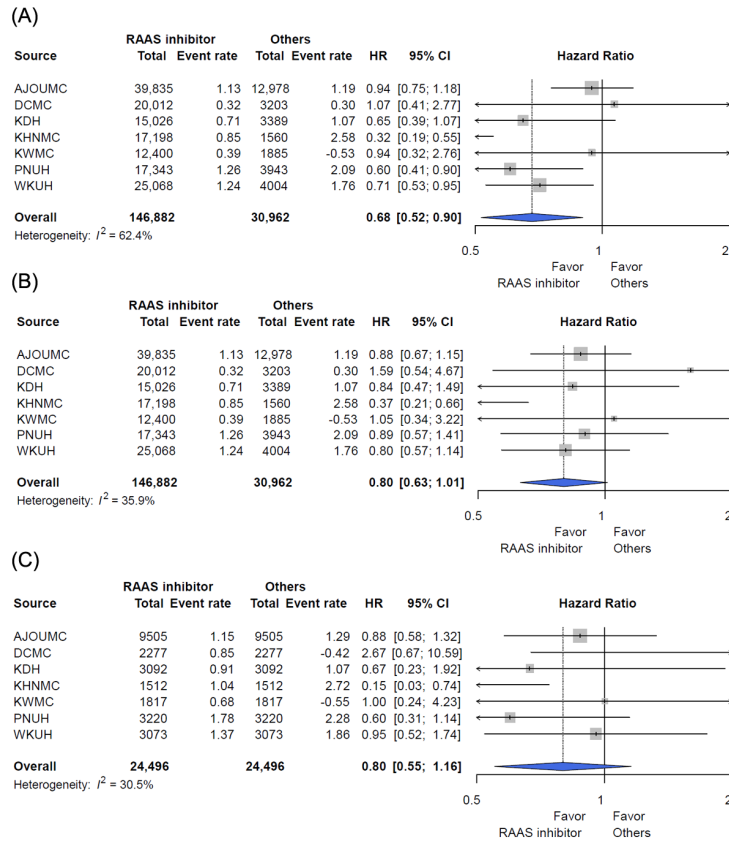


Figure S12. Incidence rate of lung cancer in the entire cohort (A) adjusted for sex and age, (B) propensity score stratified and (C) propensity-score matched population.

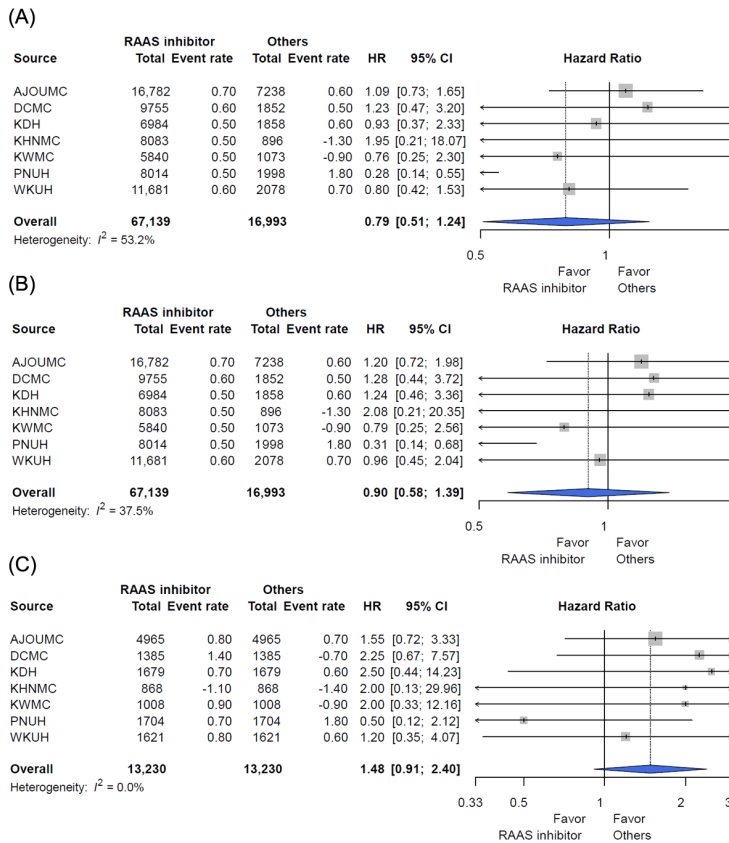


Figure S13. Incidence rate of gynecological cancer in the entire cohort (A) adjusted for sex and age, (B) propensity score stratified and (C) propensity-score matched population.

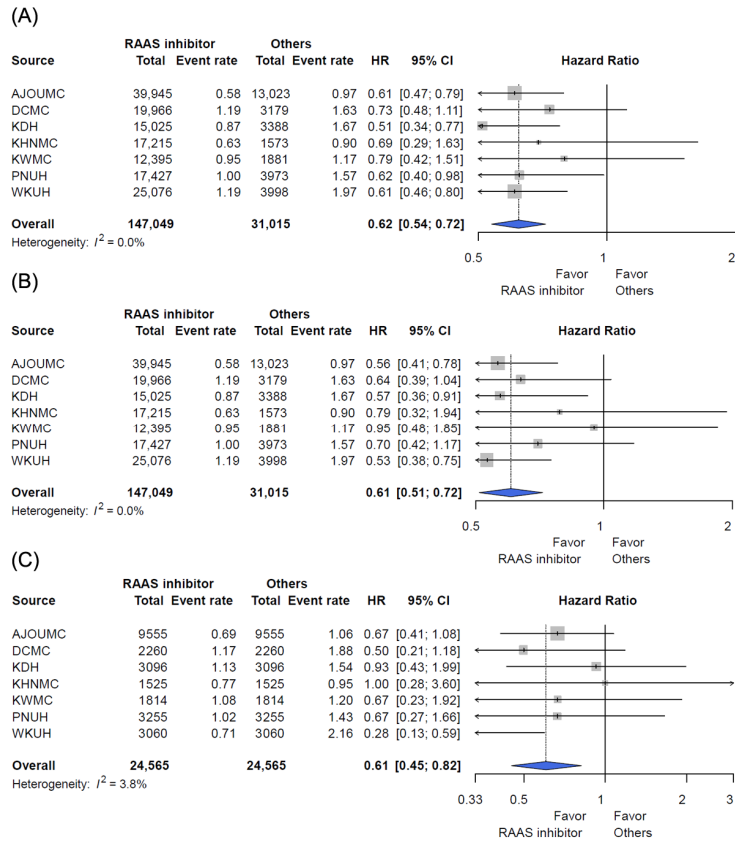


Figure S14. Incidence rate of pancreaticobiliary cancer in the entire cohort (A) adjusted for sex and age, (B) propensity score stratified and (C) propensity-score matched population.

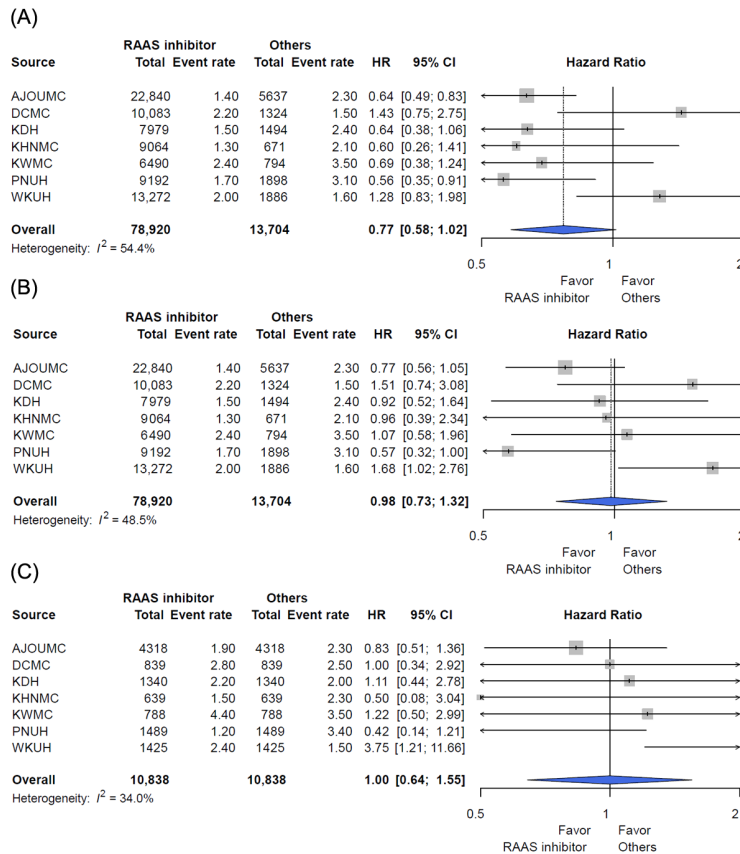


Figure S15. Incidence rate of prostate cancer in the entire cohort (A) adjusted for sex and age, (B) propensity score stratified and (C) propensity-score matched population.