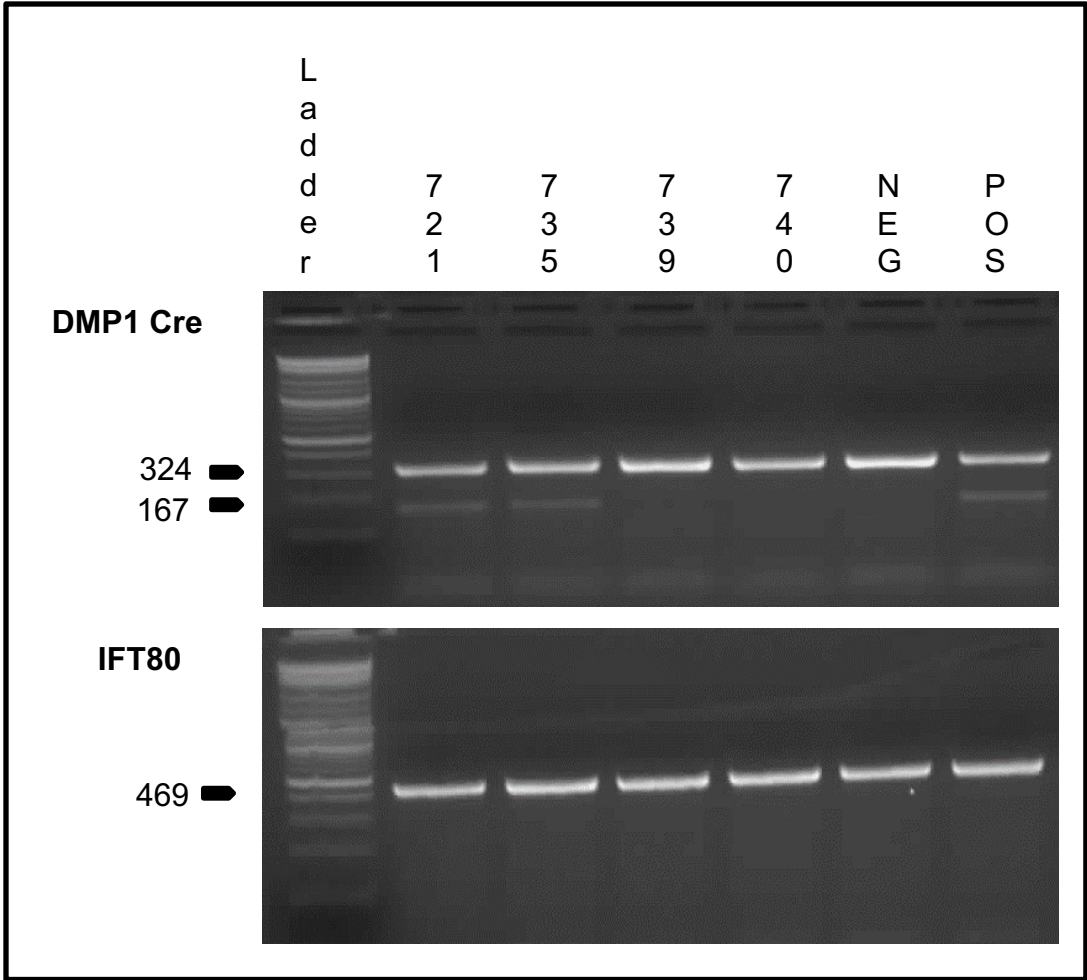


Supplementary Figure S1



Supplementary Figure S1. Genotyping results for DMP1 Cre and IFT80. Genotyping was performed using the primers for DMP1-cre and IFT80 according to the manufacturer’s instructions (Jackson Laboratory). [DMP1-cre] Transgene = 167bp and Internal positive control = 324 bp. [IFT80] Transgene = 469bp and WT =247 bp.