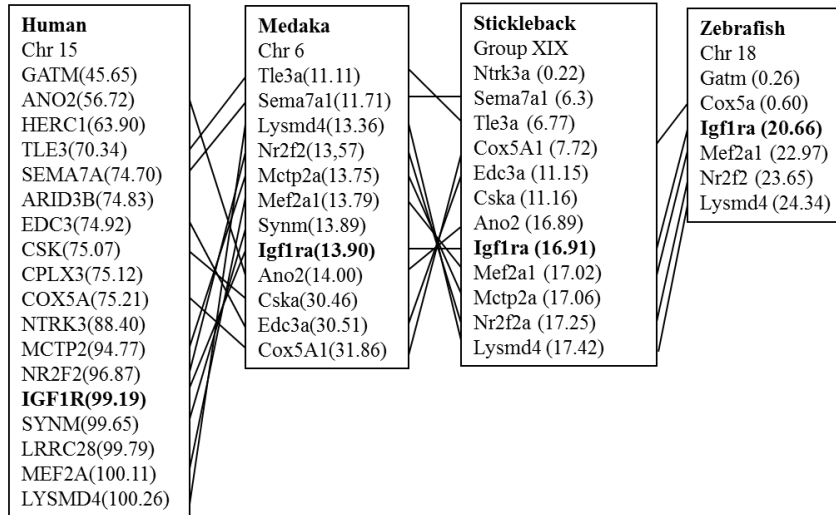


Figure S1. Nucleotide and deduced amino acid sequence of medaka *igf1ra*. The putative translation initiation codons (underlined) located in the reading frame.



Figure S3. Multiple sequence alignment of IGF1 receptors. In these organisms, Igf1r was used as the ortholog for comparison for both medaka Igf1ra and Igf1rb as the existence of paralogous isoforms of the IGF1R in mammals and amphibians.

A



B

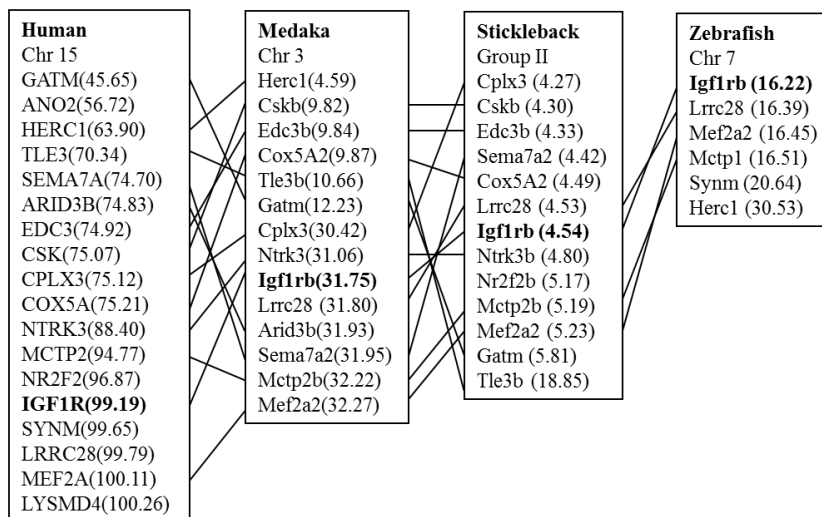


Figure S4. Chromosome synteny diagrams for Igf1rs. (A) Synteny for Igf1ra. (B) Synteny for Igf1rb. Chr, chromosome. Numbers in parentheses correspond to the position on the chromosome in Mb.