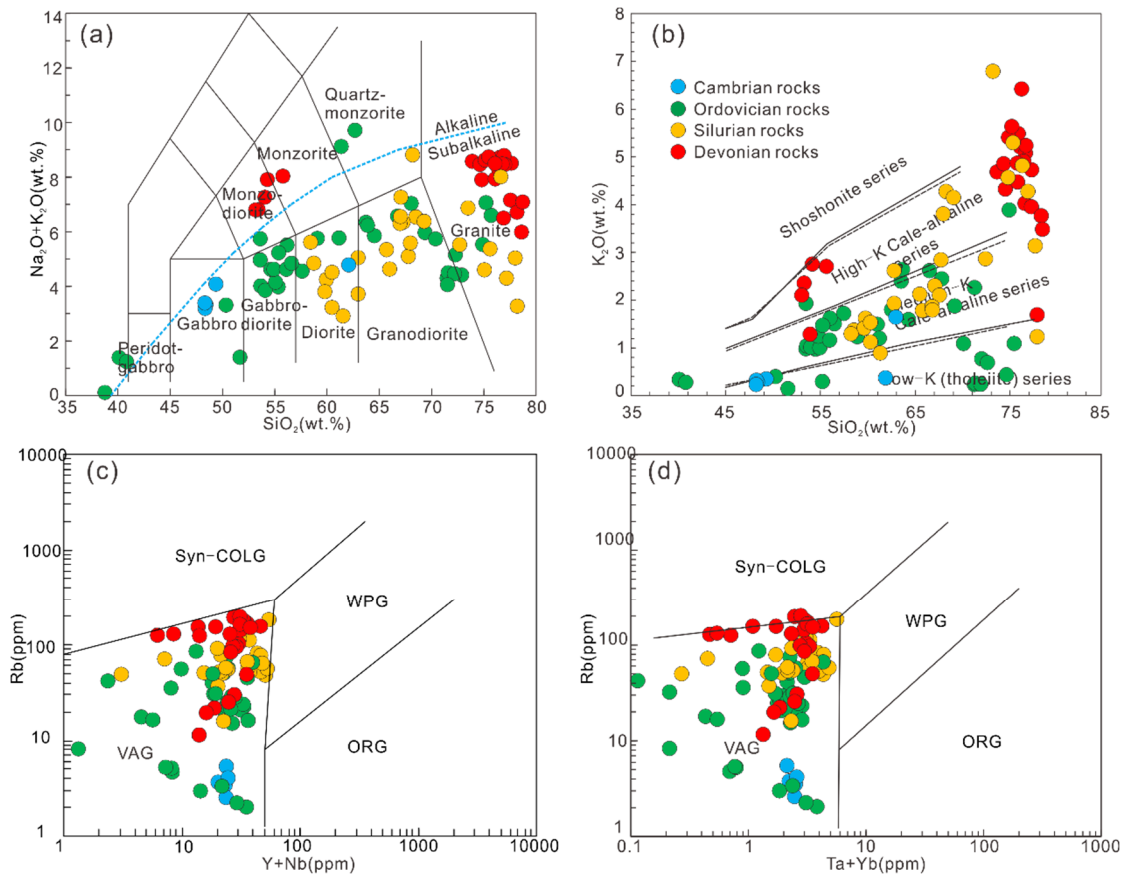
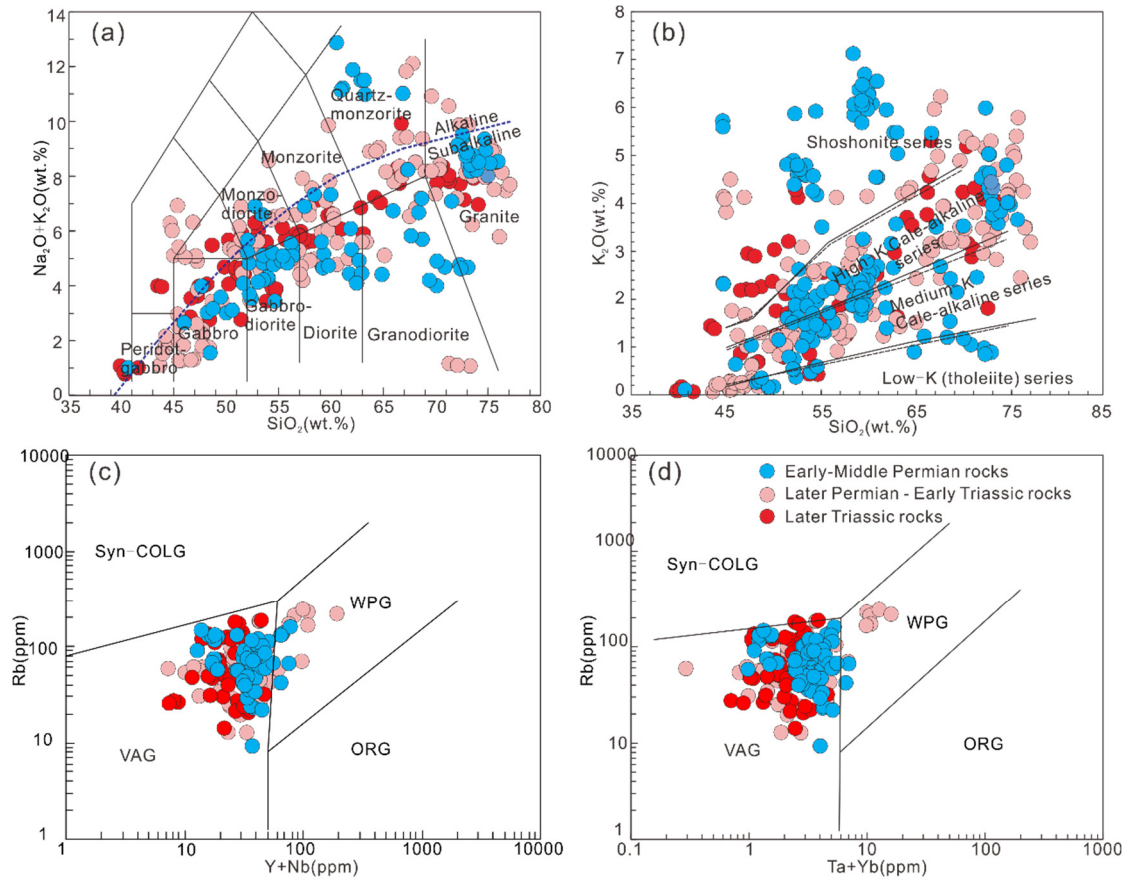


Supplementary Figure S1. Tectonic map of China (revised after [Yuan et al., 2010](#)).



Supplementary Figure S2. Geochemistry of the Cambrian to Devonian rocks of central Jilin Province in the southeastern CAOB. (a) Total alkali vs SiO_2 (TAS) diagrams; (b) SiO_2 vs K_2O diagrams. (After [Irvine and Baragar, 1971](#); [Peccerillo and Taylor, 1976](#)). Tectonic discrimination diagrams of $(\text{Y} + \text{Nb})$ -Rb (c); $(\text{Ta} + \text{Yb})$ -Rb (d) for the Cambrian to Devonian rocks in the central Jilin Province (after [Pearce et al., 1984](#)). The data source is from same as Figure 7.



Supplementary Figure S3. Geochemistry of the Early Permian to Late Triassic rocks of central Jilin Province in the southeastern CAOB. (a) Total alkali vs SiO_2 (TAS) diagrams; (b) SiO_2 vs K_2O diagrams. (After [Irvine and Baragar, 1971](#); [Peccerillo and Taylor, 1976](#)). Tectonic discrimination diagrams of (Y + Nb)-Rb (c); (Ta + Yb)-Rb (d) for the Early Permian to Late Triassic rocks in the central Jilin Province (after [Pearce et al., 1984](#)). The data source is from same as Figure 7.