

Interface Asymmetry Induced and Surface Pressure Controlled Valence Tautomerism in Monolayers of *bis*-Phthalocyaninates of Lanthanides

Daria S. Kutsybala ¹, Alexander V. Shokurov ^{1,2}, Alexander G. Martynov ¹, Alexey V. Yagodin ¹, Vladimir V. Arslanov ¹, Yulia G. Gorbunova ^{1,3,*} and Sofiya L. Selektor ^{1,*}

¹ Frumkin Institute of Physical Chemistry and Electrochemistry of Russian Academy of Sciences, Leninsky pr. 31-4, 119071 Moscow, Russia; dariakutsybala@gmail.com (D.S.K.); dr.shokurov@gmail.com (A.V.S.); martynov.alexandre@gmail.com (A.G.M.); vladimir.arslanov@gmail.com (V.V.A.), sofs@list.ru (S.L.S.)

² Enikolopov Institute of Synthetic Polymeric Materials of Russian Academy of Sciences, Profsoyuznaya 70, 117393 Moscow, Russia

³ Kurnakov Institute of General and Inorganic Chemistry of Russian Academy of Sciences, Leninsky pr. 31, 119071 Moscow, Russia; e-mail@e-mail.com

* Correspondence: sofs@list.ru (S.L.S.); yulia@igic.ras.ru (Y.G.G.)

MALDI-TOF mass spectral characterization of lanthanide bisphthalocyaninates ... 2

Figure S1. MALDI-TOF mass-spectrum of Sm[(BuO) ₈ Pc] ₂	2
Figure S2. MALDI-TOF mass-spectrum of Er[(BuO) ₈ Pc] ₂	2
Figure S3. MALDI-TOF mass-spectrum of Tm[(BuO) ₈ Pc] ₂	3
Figure S4. MALDI-TOF mass-spectrum of Yb[(BuO) ₈ Pc] ₂	3
Figure S5. MALDI-TOF mass-spectrum of Sm[(15C5) ₄ Pc] ₂	4

MALDI-TOF mass spectral characterization of lanthanide bisphthalocyaninates

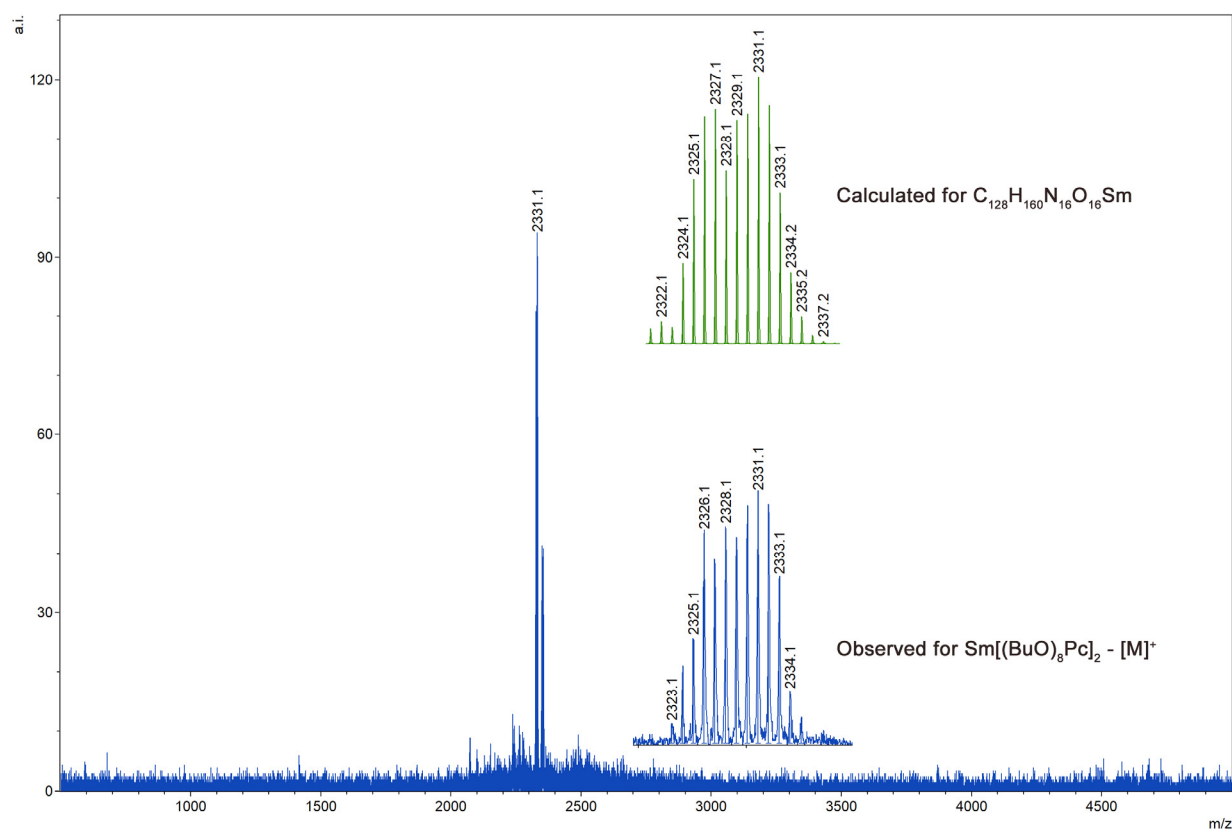


Figure S1. MALDI-TOF mass-spectrum of $\text{Sm}[(\text{BuO})_8\text{Pc}]_2$

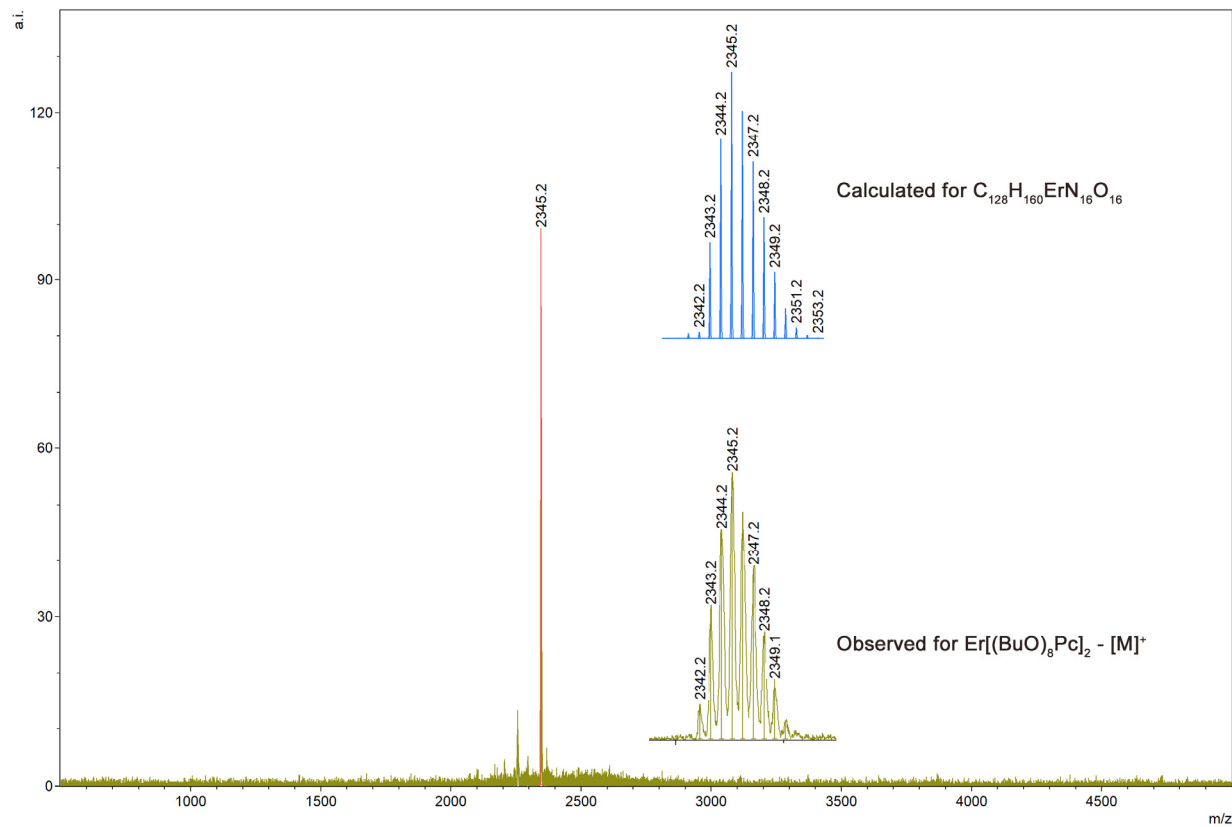


Figure S2. MALDI-TOF mass-spectrum of $\text{Er}[(\text{BuO})_8\text{Pc}]_2$

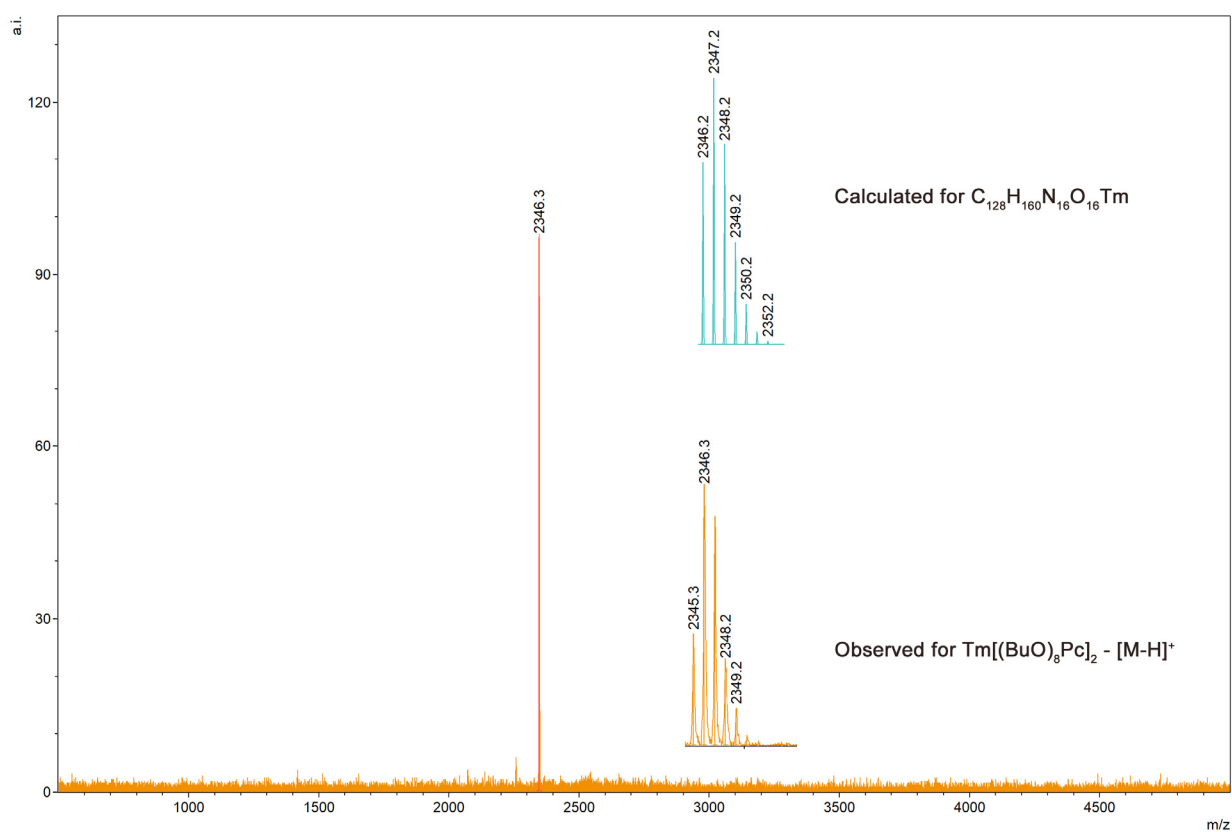


Figure S3. MALDI-TOF mass-spectrum of $Tm[(BuO)_8Pc]_2$

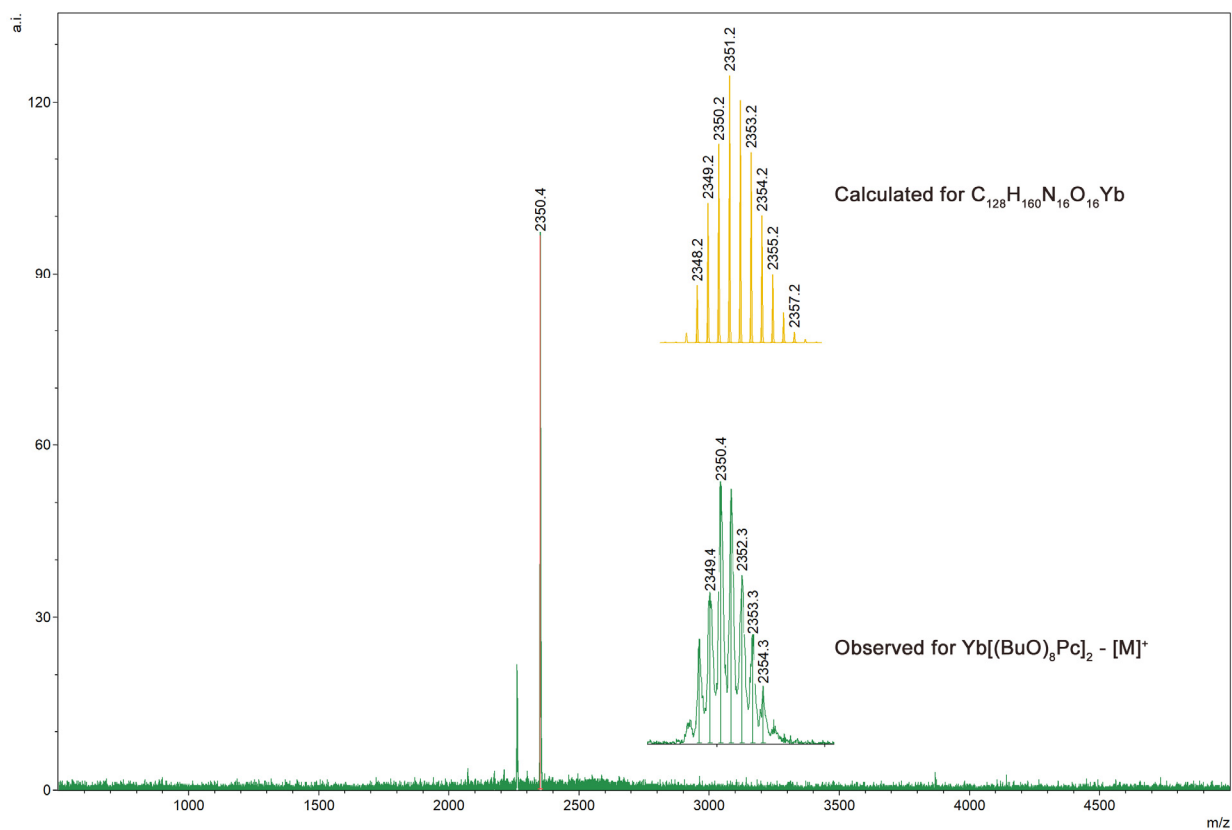


Figure S4. MALDI-TOF mass-spectrum of $Yb[(BuO)_8Pc]_2$

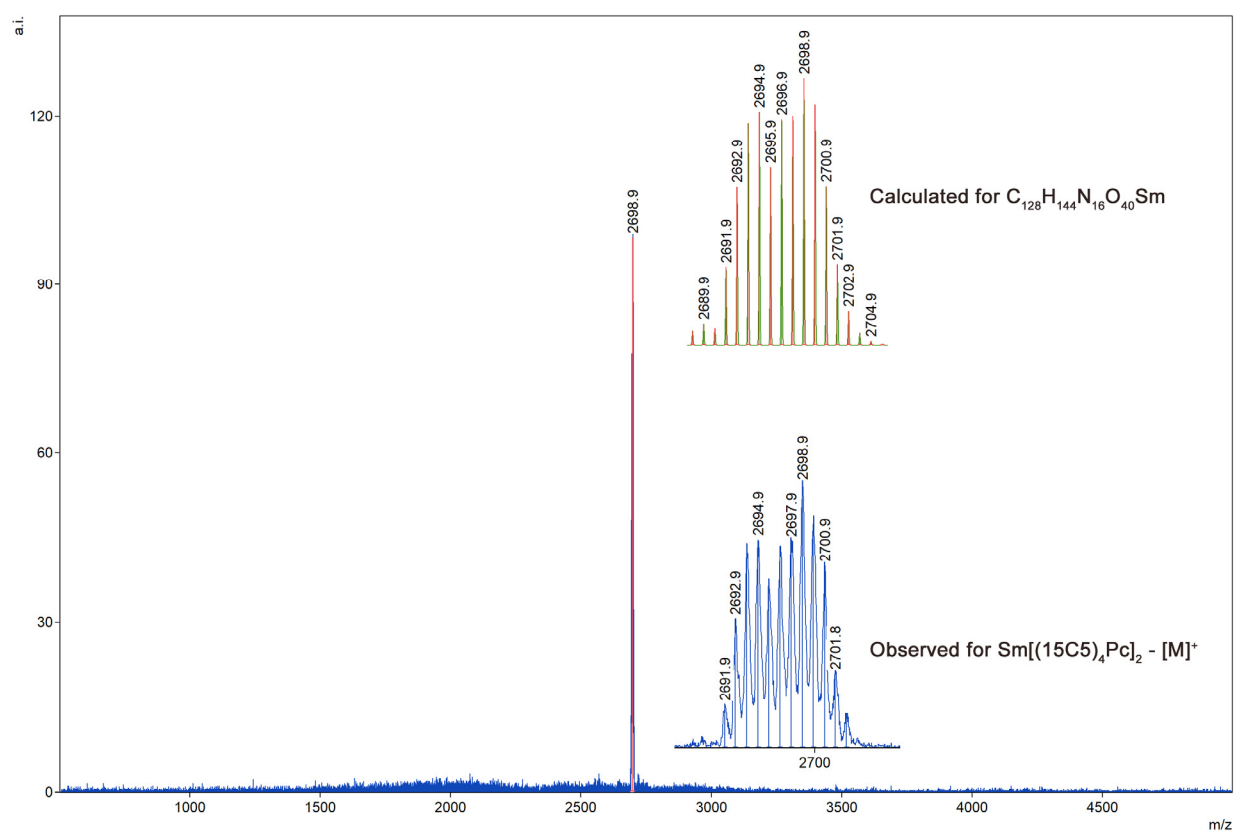


Figure S5. MALDI-TOF mass-spectrum of $Sm[(15C5)_4Pc]_2$