

Symmetry of Post-Translational Modifications in a Human Enzyme

Teresa Maria Carusone and Giuseppe Manco *

Institute of Biochemistry and Cell Biology, National Research Council of Italy, 80131 Naples, Italy;
tcarusone@embl.fr

*Correspondence: giuseppe.manco@cnr.it

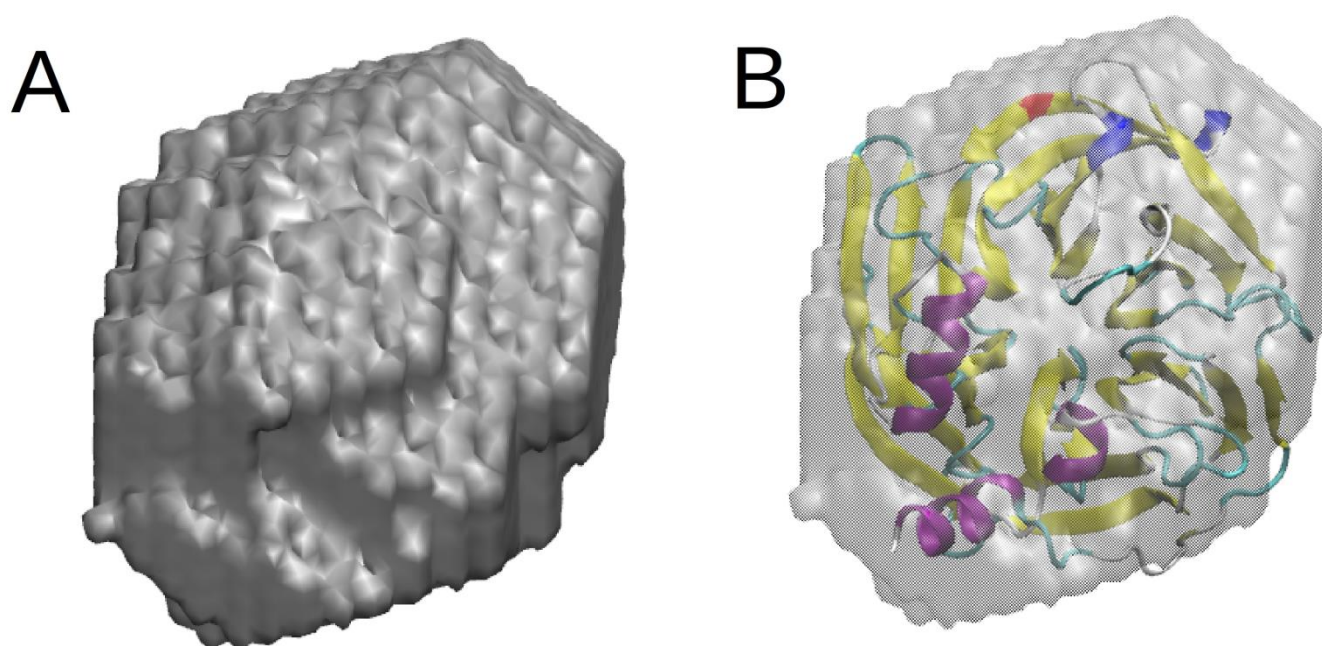


Figure S1. SAXS-based reconstruction of the PON2 wild type structure. The semi-transparent envelope in (A) represents the low resolution model of PON2, where the homology 3D structural model has been docked (B) [modified from ref. 49 of main text].

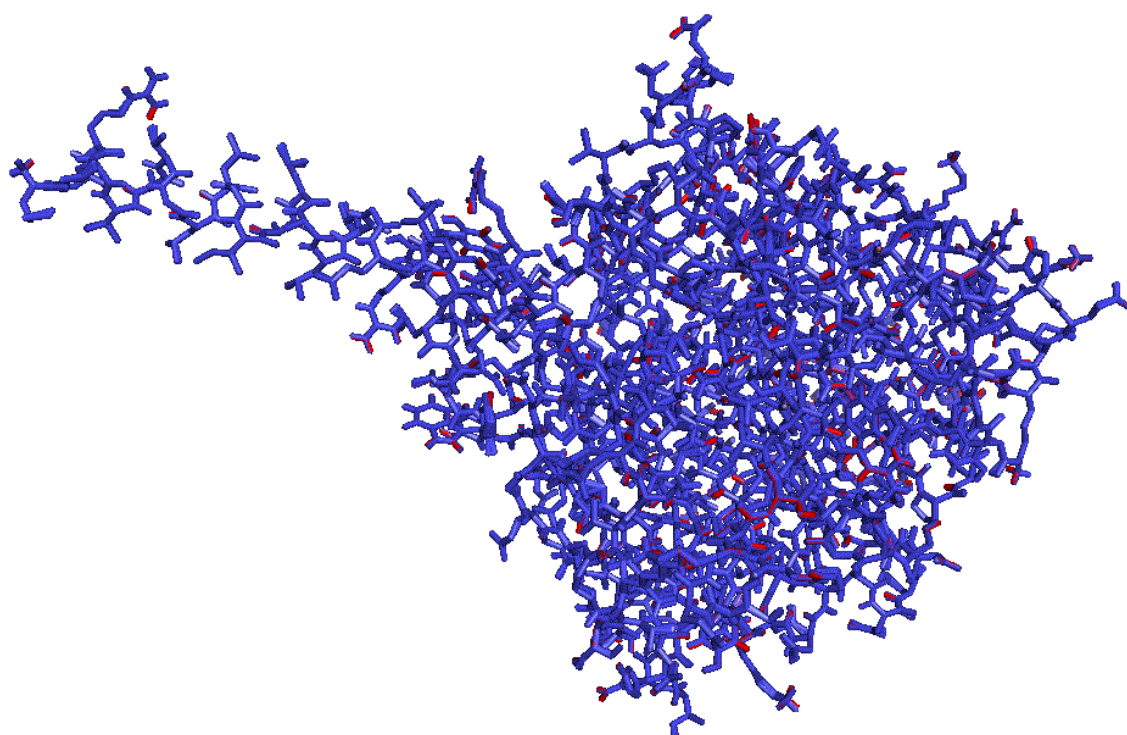


Figure S2. Superposition of the wildtype (blue) and double mutant A148G_ S311C (red) showing small differences all along the structure toward the active site but with not prominent effects.