

Supplementary Materials

Expanding the Anti-Phl p 7 Antibody Toolkit: An Anti-Idiotypic Nanobody Inhibitor

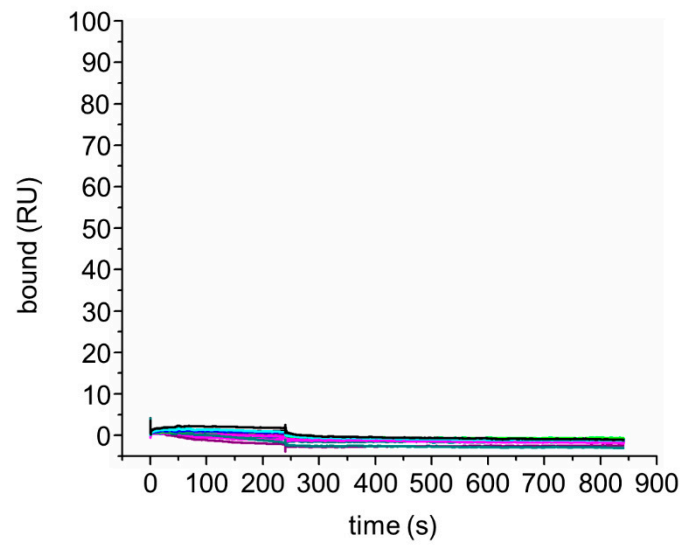
Susan K. Vester ¹, Anna M. Davies ¹, Rebecca L. Beavil ^{1,2}, Balraj S. Sandhar ^{1,3}, Andrew J. Beavil ¹, Hannah J. Gould ¹, Brian J. Sutton ¹ and James M. McDonnell ^{1,*}

¹ Randall Centre for Cell and Molecular Biophysics, King's College London, New Hunt's House, London SE1 1UL, UK

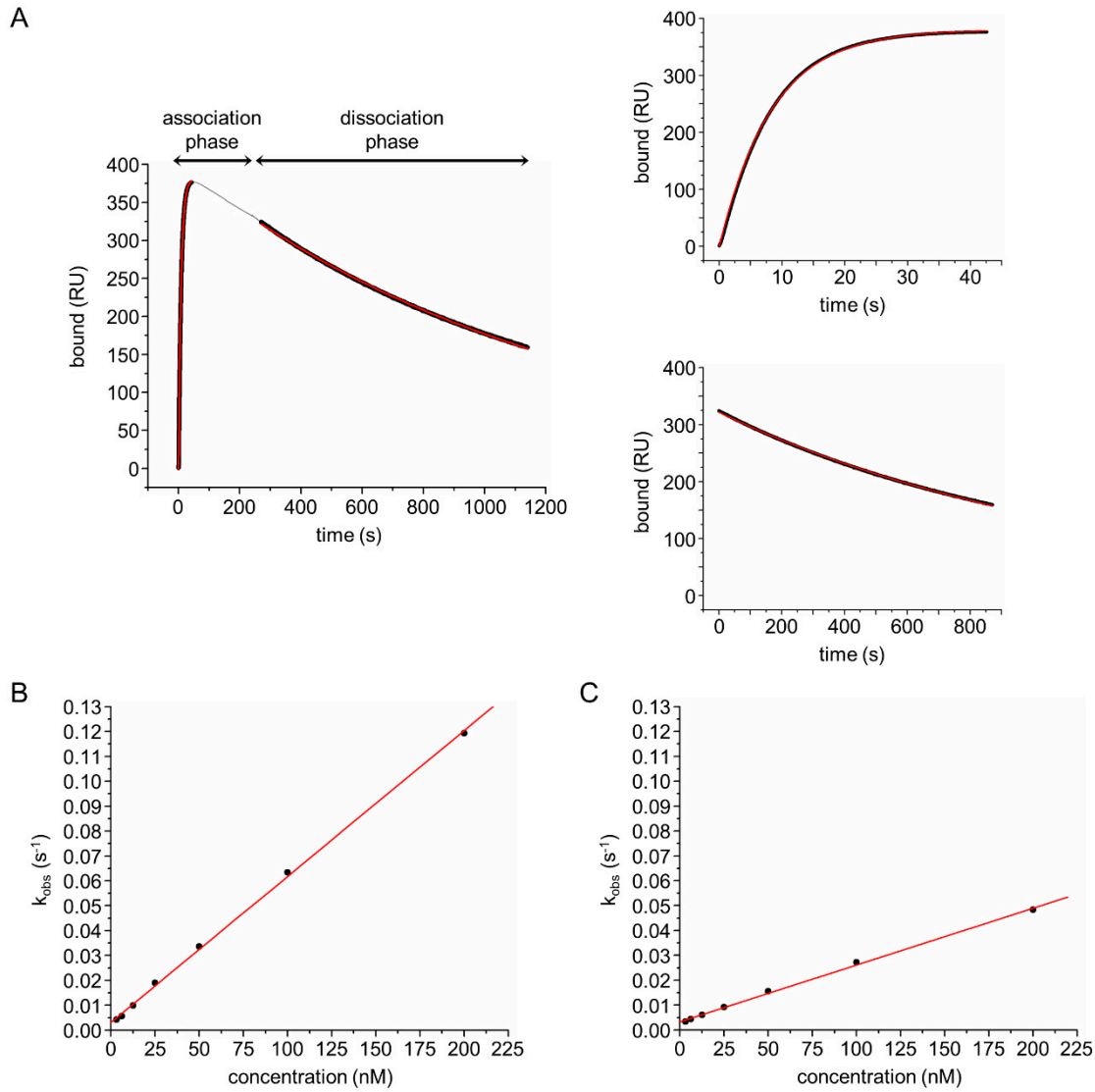
² Current address: 272BIO Limited, The Pirbright Institute, B-Block, Ash Road, Pirbright, Woking, Surrey GU24 0NF, UK

³ Current address: William Harvey Research Institute, Barts and The London School of Medicine and Dentistry, Queen Mary University of London, London EC1M 6BQ, UK

*Corresponding author (james.mcdonnell@kcl.ac.uk)



Supplementary Figure S1: HAPPID2 Fab binding to a δ Nb072. a δ Nb072 was captured on an anti-His-tag chip and HAPPID2 Fab was flowed over in a two-fold dilution series, with the highest concentration 200 nM HAPPID2 Fab (black line) and the lowest concentration 3 nM HAPPID2 Fab (purple line), as in Figure 1. Data are shown in duplicate. RU, resonance units.



Supplementary Figure S2: SPR data analysis and fitting. (A) Example data from Figure 1A showing 200 nM HAPPID1 Fab flowed over a δ Nb072 captured via an anti-His-tag antibody (gray line). Data ranges that were used for data fitting are shown in black, with the fit of the data shown in red. The right-hand panels illustrate the extracted data used for fitting k_{obs} (top panel) and k_{off} (bottom panel). (B) k_{obs} values (black circles), derived from fitting the association curves of HAPPID1 Fab binding to a δ Nb072, were plotted against concentration of HAPPID1 Fab to estimate k_{on} from the slope of the linear fit (red line). (C) k_{obs} values (black circles), derived from fitting the association curves of HAPPIE1 Fab binding to a δ Nb072, were plotted against concentration of HAPPIE1 Fab to estimate k_{on} from the slope of the linear fit (red line).