

Figure S1. Surface chemical composition of pyrite from the mangrove soil of Ilha de Maré.

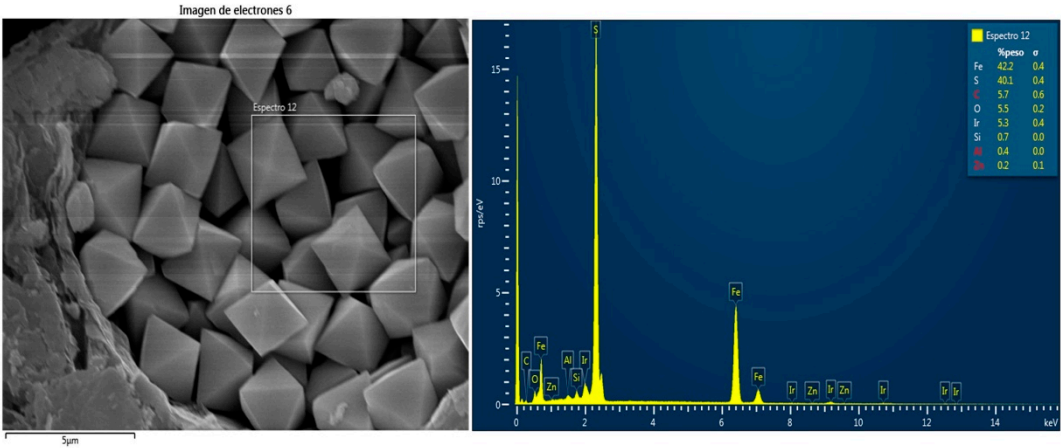


Table S1. Physical chemical attributes and soil components of the mangroves of Ilha de Maré, Ponta Grossa, Pitinga and Cacha Prego.

		pH		Eh (mV)		Fe total (%)		Areia (%)
		DS	WS	DS	WS	DS	WS	
IM	S	6.9 ^{ab} (0.1)	6.7 ^a (0,1)	161 ^{a*} (13)	111 ^b (6)	2.3 ^a (0.3)	2.3 ^a (0.5)	43.7 ^b (6.7)
	D	7.2 ^a (0.1)	7.2 ^a (0.1)	97 ^{b*} (6)	74 ^b (13)	2.1 ^a (0.0)	2.6 ^a (0.1)	51.4 ^c (9.0)
PT	S	4.8 ^{b*} (0.4)	6.8 ^a (0.2)	164 ^a (14)	146 ^a (8)	0.5 ^b (0.3)	0.4 ^c (0.1)	89.8 ^a (2.0)
	D	5.9 ^{a*} (0.4)	7.2 ^a (0.1)	187 ^{a*} (1.0)	140 ^a (13)	0.5 ^b (0.1)	0.6 ^c (0.2)	89.4 ^a (2.4)
CP	S	7.1 ^a (0.2)	7.1 ^a (0.2)	144 ^a (18)	102 ^b (13)	0.8 ^b (0.2)	1.3 ^b (0.3)	84.9 ^a (3.3)
	D	7.0 ^a (0.0)	7.3 ^a (0.3)	111 ^{ab} (17)	77 ^{ab} (41)	1.1 ^b (0.3)	1.2 ^b (0.2)	77.4 ^b (3.1)
PG	S	7.0 ^{ab} (0.0)	7.0 ^a (0.0)	134 ^a (3.5)	112 ^b (3.5)	0.5 ^b (0.5)	0.4 ^c (0.3)	87.3 ^a (8.4)
	D	7.3 ^a (0.1)	7.3 ^a (0.1)	111 ^{ab} (2.1)	96 ^b (15)	0.5 ^b (0.2)	0.3 ^c (0.1)	88.1 ^a (3.6)