

Supplementary material to the article " Soil-to-Atmosphere GHG Fluxes in Hemiboreal Deciduous Tree and Willow Coppice Based Agroforestry Systems with Mineral Soil".

Authors: Andis Bārdulis*, Dana Purviņa, Kristaps Makovskis, Arta Bārdule, Dagnija Lazdiņa

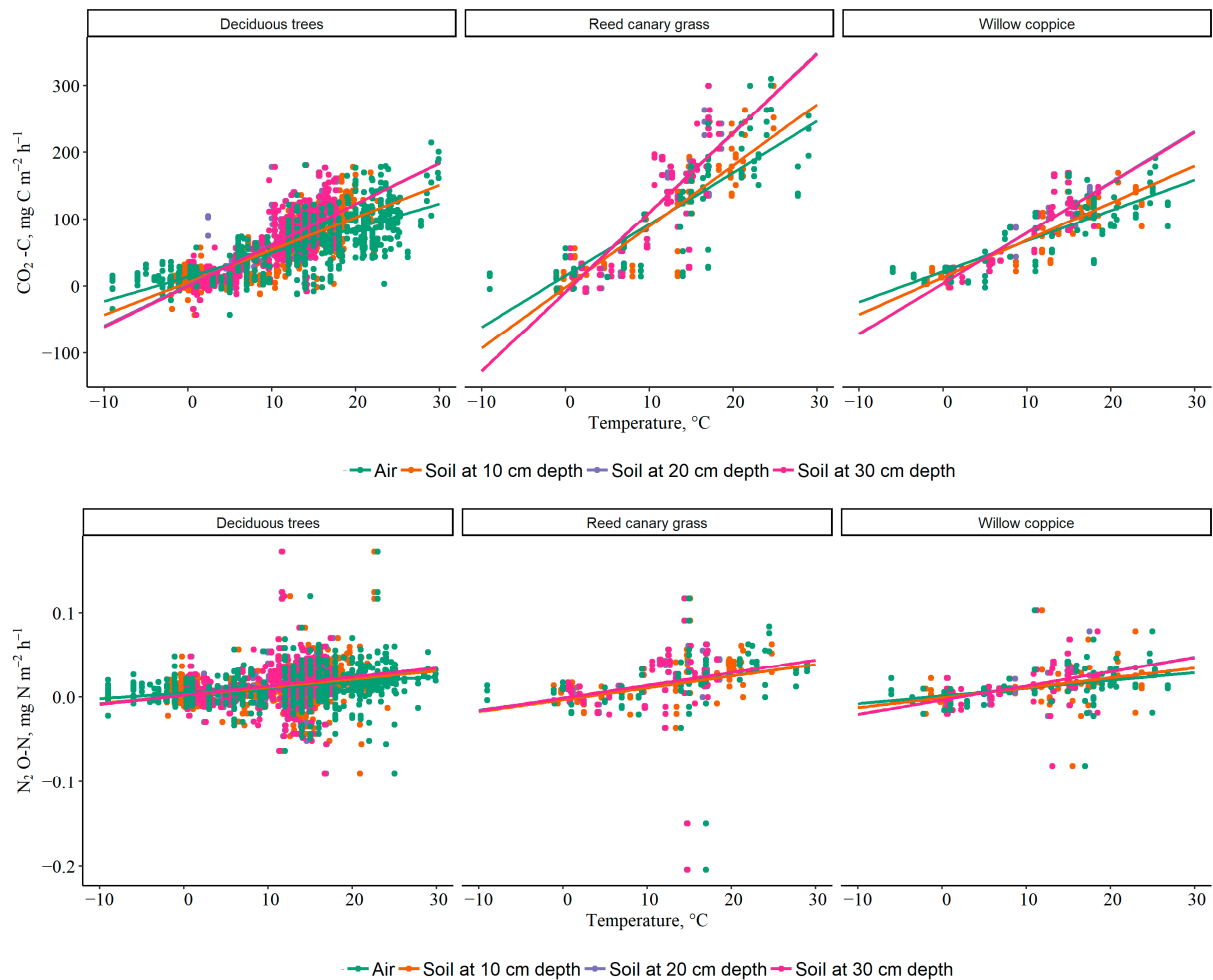


Figure S1. Relationships between soil CO_2 and N_2O fluxes and soil and air temperature, grouped by dominant vegetation type (deciduous trees, willow coppice or RCG) in plots of agroforestry systems.