

# Supplementary Material

Table S1. Validation parameters and information about the chromatographic method

Compounds	Linearity (mg L <sup>-1</sup> )	R <sup>2</sup>	RSD (%) (n = 3)		Recovery (n = 3) (%)
			Repeatability	Reproducibility	
MeP	0.05 - 1	0.9977	2.9	7.8	62
EtP	0.01 - 1	0.9988	2.0	4.0	47
PrP	0.01 - 1	0.9985	1.6	3.3	75
BuP	0.02 - 1	0.9988	1.2	4.8	64
TCS	0.02 - 1	0.9987	1.4	3.9	60
FEN	0.01 - 1	0.9949	3.2	5.7	72
GEM	0.02 - 1	0.9983	1.5	4.9	76

R<sup>2</sup> - regression coefficient; RSD - relative standard deviation;

Table S2. Samples properties – Temperature, pH, and conductivity

Hour	Temperature		pH		Conductivity	
	BA-U	BA-D	BA-U	BA-D	BA-U	BA-D
7:00	13.20	13.30	7.16	7.48	269.00	298.00
9:00	13.13	13.57	7.20	7.26	276.00	293.67
11:00	13.97	14.60	7.93	7.56	268.33	308.00
13:00	15.27	15.77	7.80	7.81	277.67	301.33
15:00	16.13	16.57	7.86	7.81	287.67	359.33
17:00	15.93	16.20	7.78	7.58	284.67	342.33
19:00	15.23	15.57	7.88	7.87	277.33	333.33
21:00	14.50	15.00	7.33	6.88	270.33	329.00
23:00	14.03	14.67	7.31	7.04	267.33	325.33
1:00	13.73	14.27	7.46	7.48	264.33	308.00
3:00	13.47	14.07	7.43	7.35	263.00	301.67
5:00	13.37	13.80	7.68	7.54	263.00	292.00

Table S3. Samples properties – Turbidity, DO, TDS and salinity

Hour	Turbidity		DO		TDS		Salinity	
	BA-U	BA-D	BA-U	BA-D	BA-U	BA-D	BA-U	BA-D
7:00	22.50	17.90	5.40	5.16	173.00	186.00	0.17	0.18
9:00	16.63	16.70	5.44	5.10	177.00	186.33	0.17	0.18
11:00	27.83	22.30	5.08	4.26	169.67	191.00	0.16	0.18
13:00	32.10	37.30	5.40	4.16	170.67	203.00	0.16	0.19
15:00	32.77	52.23	5.65	3.88	173.33	214.00	0.17	0.21
17:00	35.67	40.70	5.10	4.31	172.00	204.67	0.17	0.20
19:00	32.93	41.33	4.60	3.86	170.00	203.33	0.16	0.20
21:00	37.50	43.03	4.82	4.58	169.00	203.00	0.16	0.20
23:00	36.53	49.83	4.79	4.58	168.67	202.67	0.16	0.20
1:00	60.80	60.00	5.34	4.84	168.00	194.33	0.16	0.19
3:00	47.60	68.13	5.20	4.71	166.00	191.33	0.16	0.19
5:00	56.67	68.23	4.90	5.33	168.33	185.00	0.16	0.18

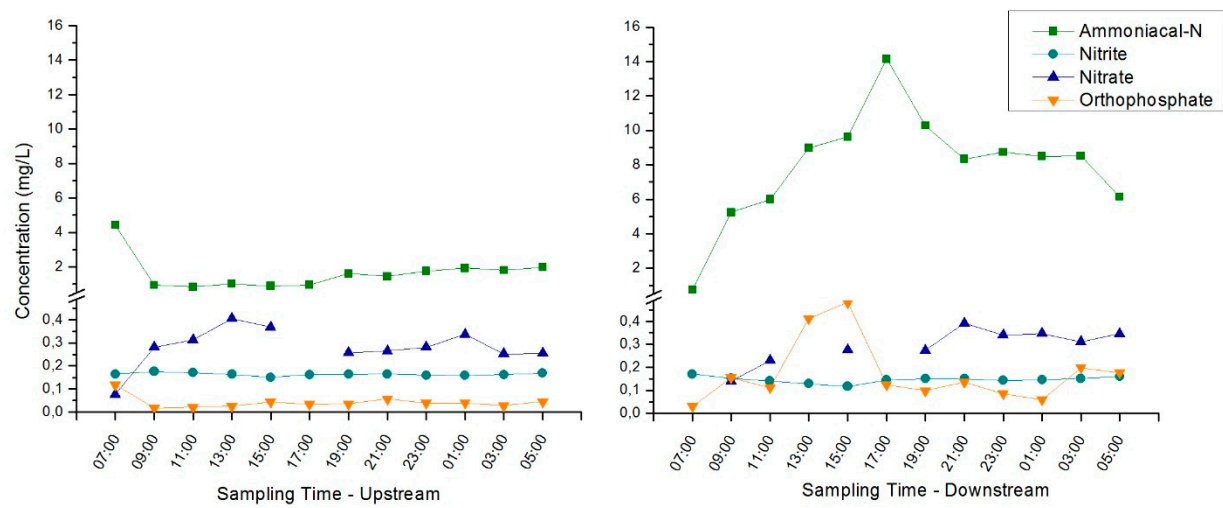


Figure S1 – Nutrients concentrations