

Supplementary Materials

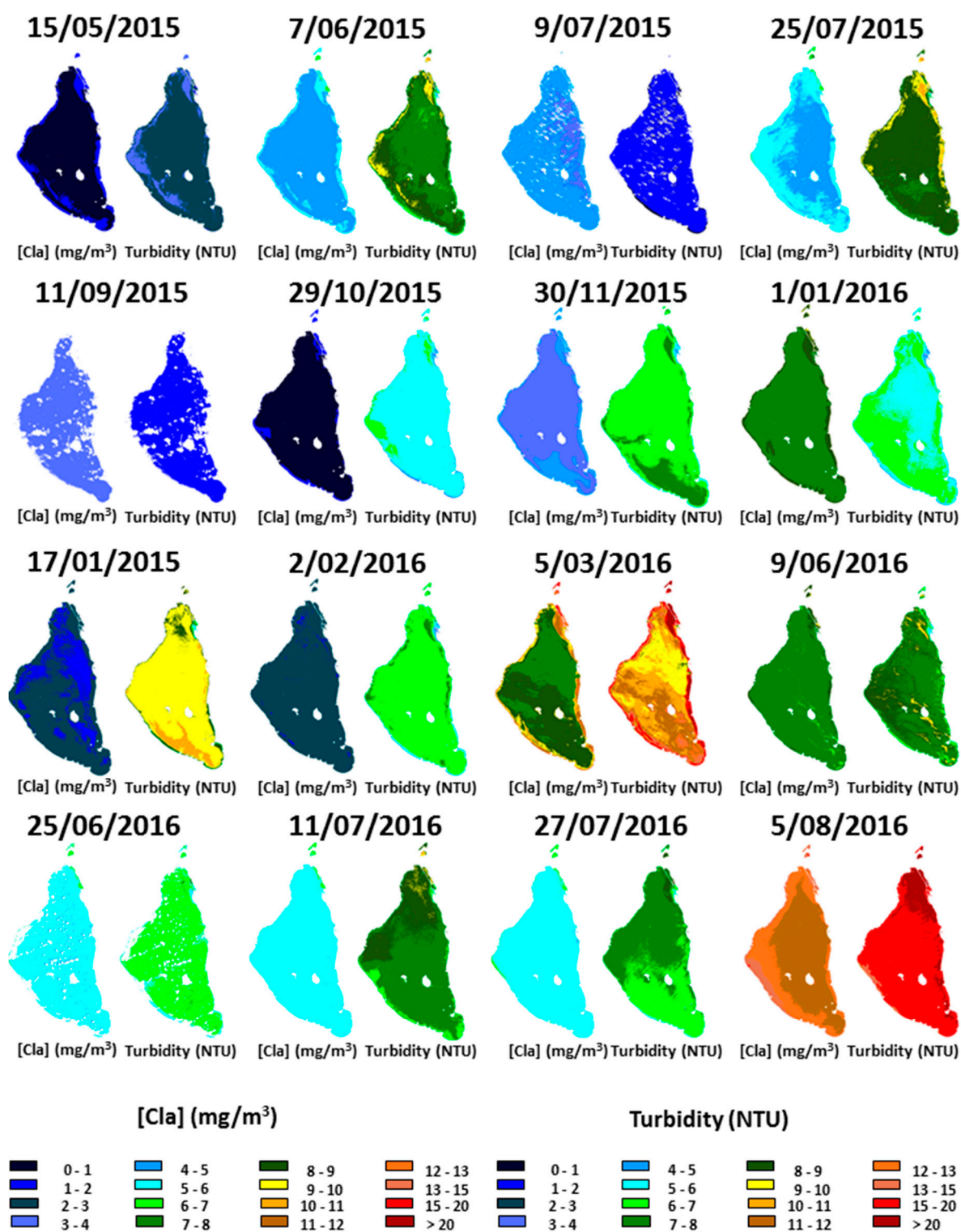


Figure S1. Turbidity and chlorophyll-a concentration thematic maps.

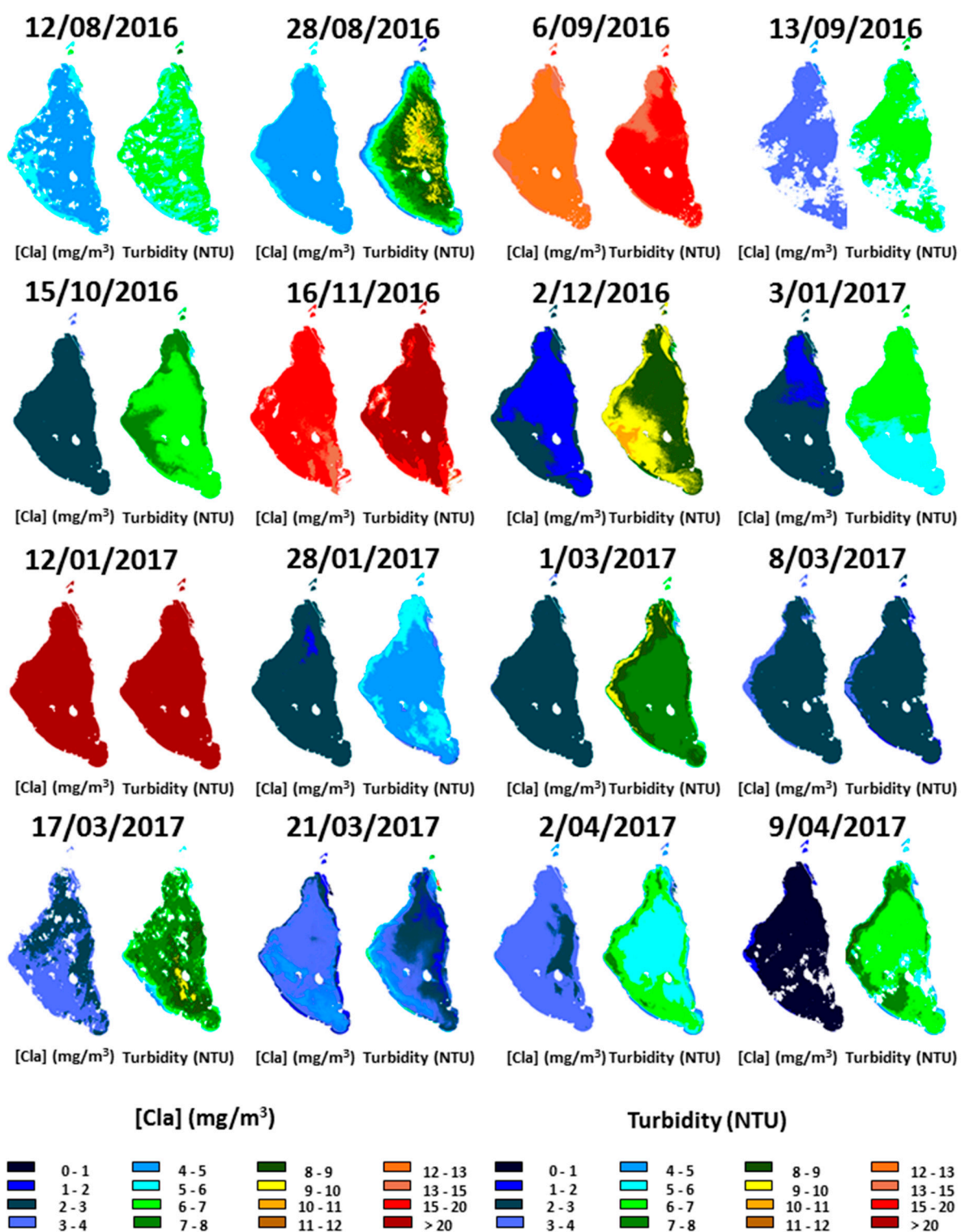


Figure S2. Turbidity and chlorophyll-a concentration thematic maps.

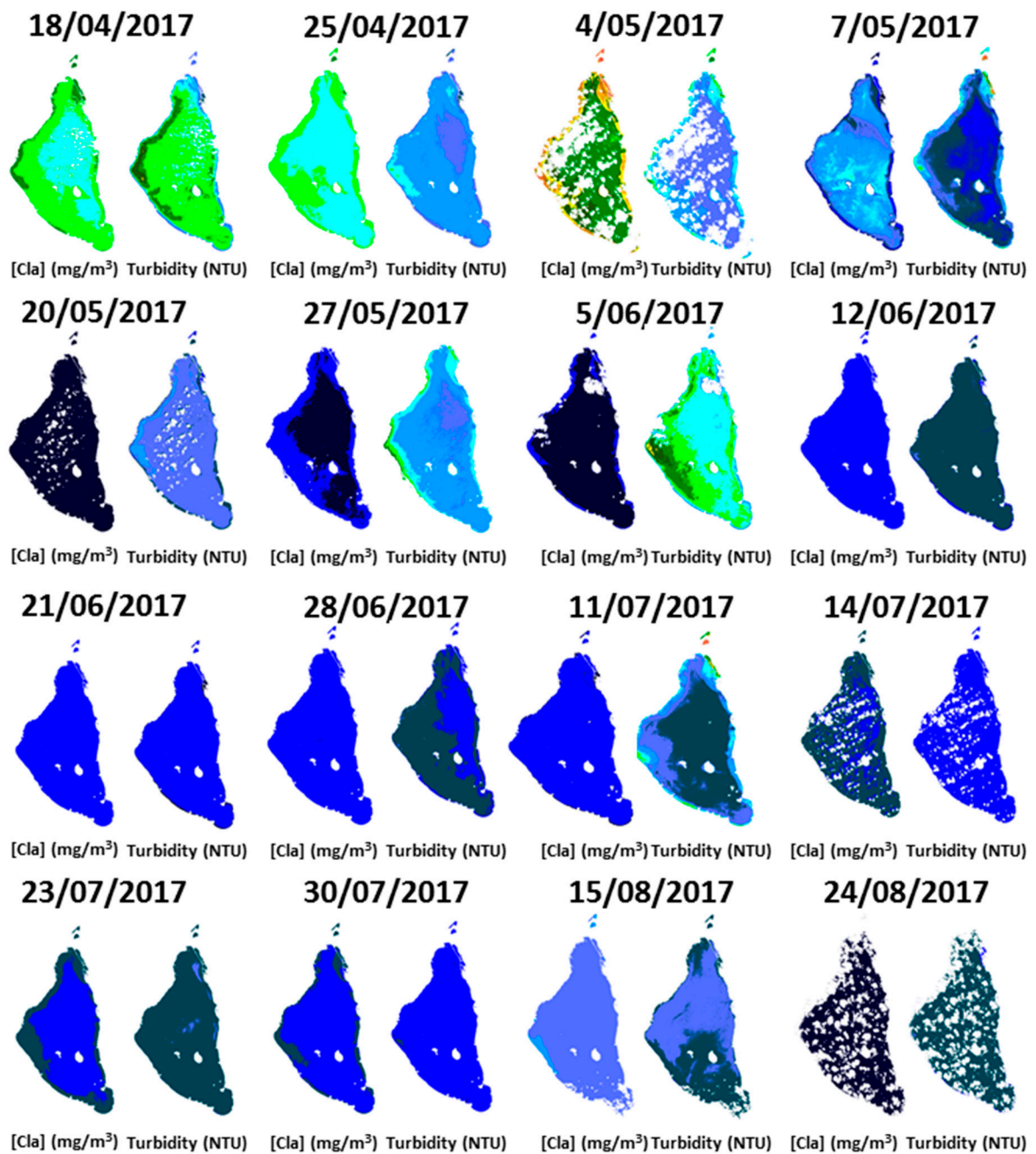


Figure S3. Turbidity and chlorophyll-a concentration thematic maps.

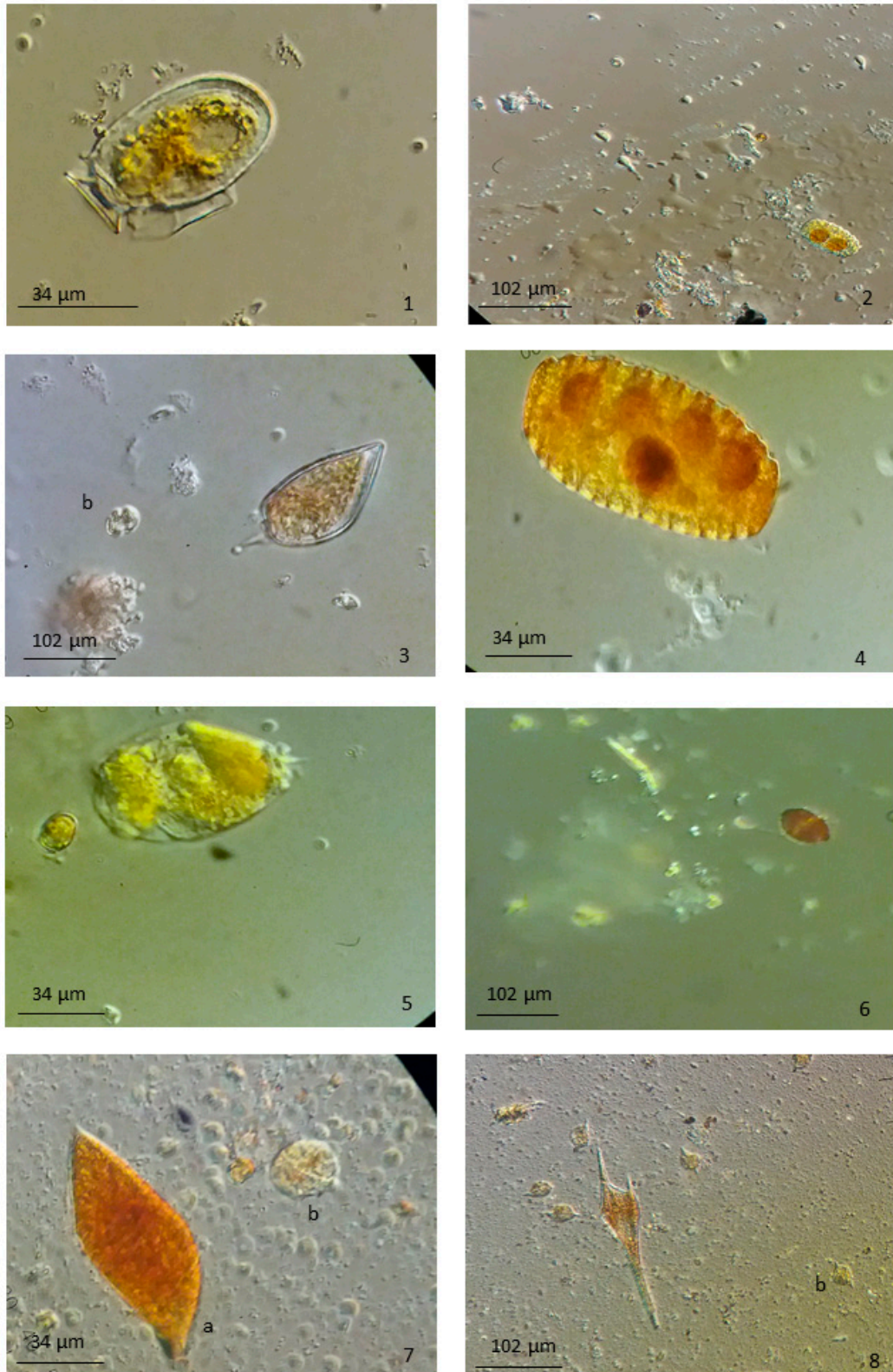


Figure S4. Images of some genera of phytoplankton found in deep samples of the Mar Menor in an approximately central point (by Nuria Hernández-Sáez). The graphical scale is shown in each image. The dates of the samples are 2017-05-08 (1, 2, & 3), 2017-06-25 (4, 5, & 6) and 2017-09-01 (7 & 8). 1- *Dinophysis*; 2. *Euastrum*; 3. *Prorocentrum*. 4. *Polykrikos*; 5 & 6. *Gymnodinium*; 7a. *Gyrodinium*; 8. *Ceratium*; 3b, 7b, & 8b. *Peridinium*. In 7 & 8 there are also nanoplankton, smaller than 3-5 μm , covering the slide.