

Supplementary material

# Evaluation of Rain Estimates from Several Ground-Based Radar Networks and Satellite Products for Two Cases Observed over France in 2022

Antoine Causse <sup>1,2,\*</sup>, Céline Planche <sup>1,3</sup>, Emmanuel Buisson <sup>2</sup> and Jean-Luc Baray <sup>1,\*</sup>

<sup>1</sup> Université Clermont Auvergne, Centre National de la Recherche Scientifique (CNRS), Laboratoire de Météorologie Physique, UMR 6105, F63000 Clermont-Ferrand, France; celine.planche@uca.fr

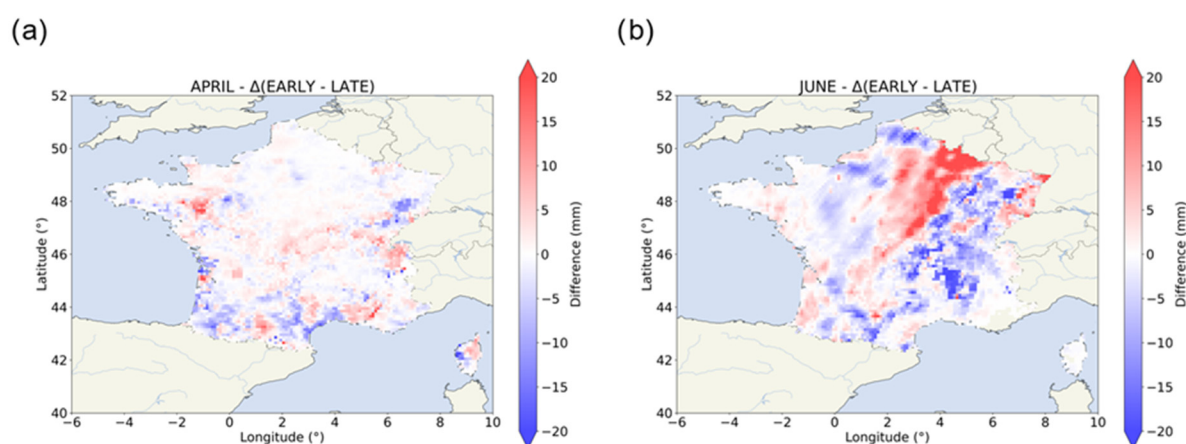
<sup>2</sup> Weather-Measures, F63000 Clermont-Ferrand, France; emmanuel.buisson@weather-measures.com

<sup>3</sup> Institut Universitaire de France (IUF)

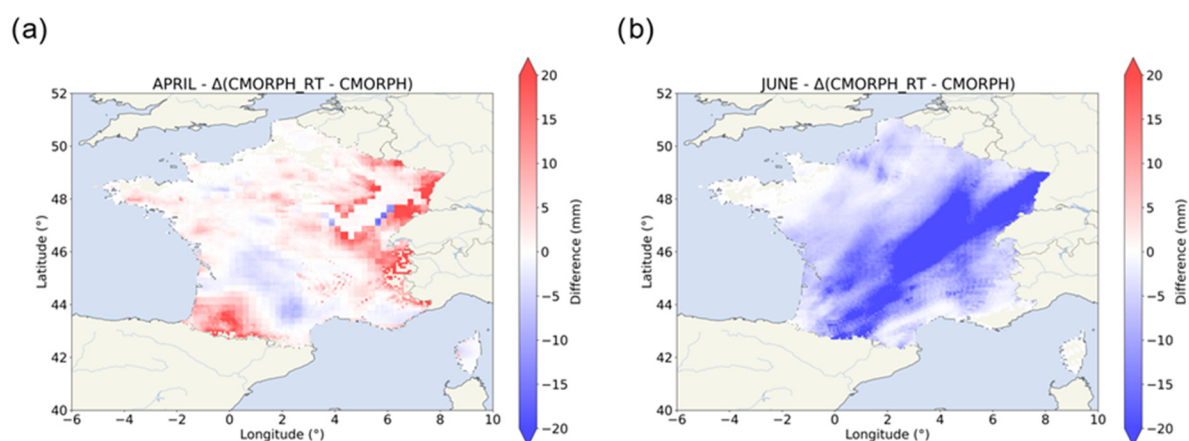
\* Correspondence: antoine.causse63@gmail.com (A.C.); j-luc.baray@uca.fr (J.-L.B.)

## Supplementary Material:

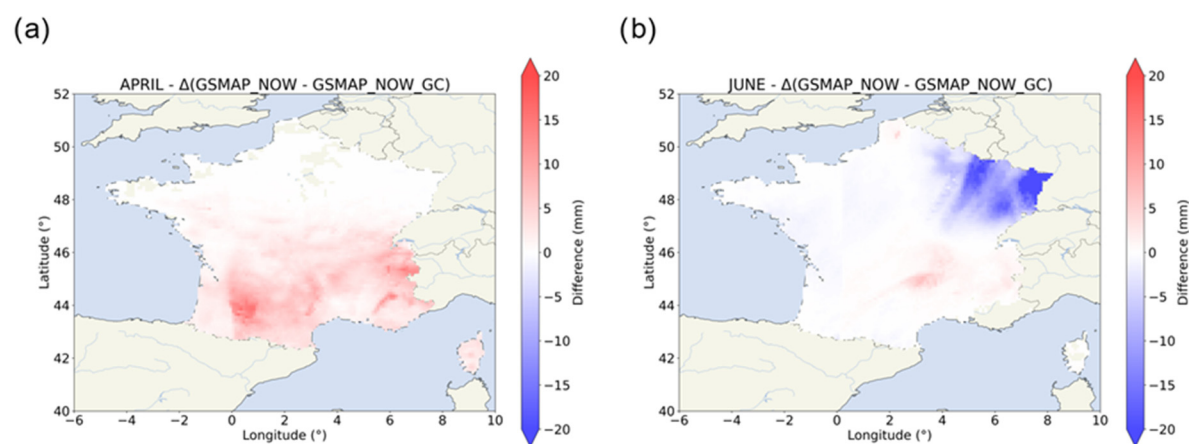
This supplementary material provides for both the April and the June cases a comparative analyse of the rain estimates obtained by the different products from each category (or family) used in the article. Thus, Figures S1-S6 represent the differences in the spatially rain amounts obtained with IMERG-Early and IMERG-Late (Figure S1), CMORPH-RT and CMORPH (Figure S2), GSMaP-Now and GSMaP-Now-GC (Figure S3), GSMaP-NRT and GSMaP-NRT-GC (Figure S4), GSMaP-Now and GSMaP-NRT (Figure S5) and GSMaP-Now-GC and GSMaP-NRT-GC (Figure S6).



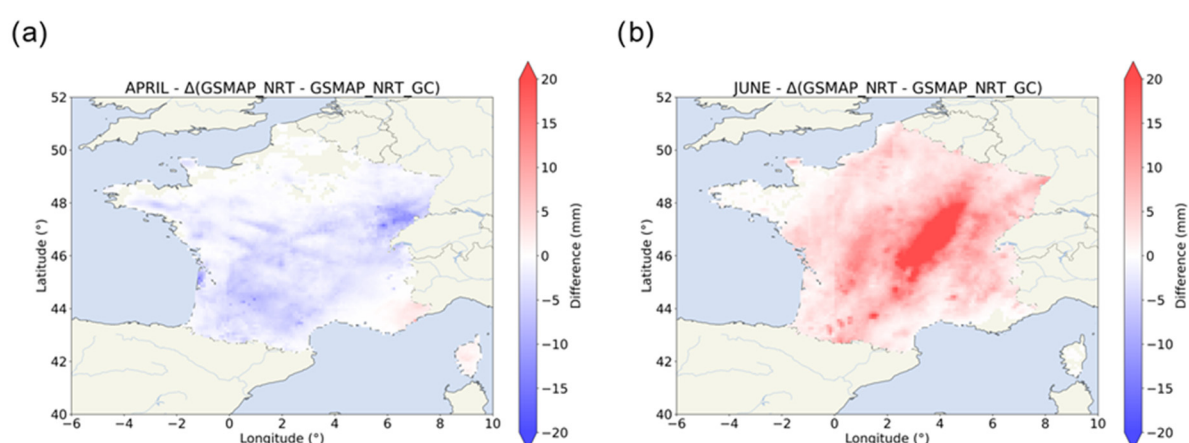
**Figure S1.** Accumulation difference between IMERG-Early and IMERG-Late products for the April (a) and June (b) cases.



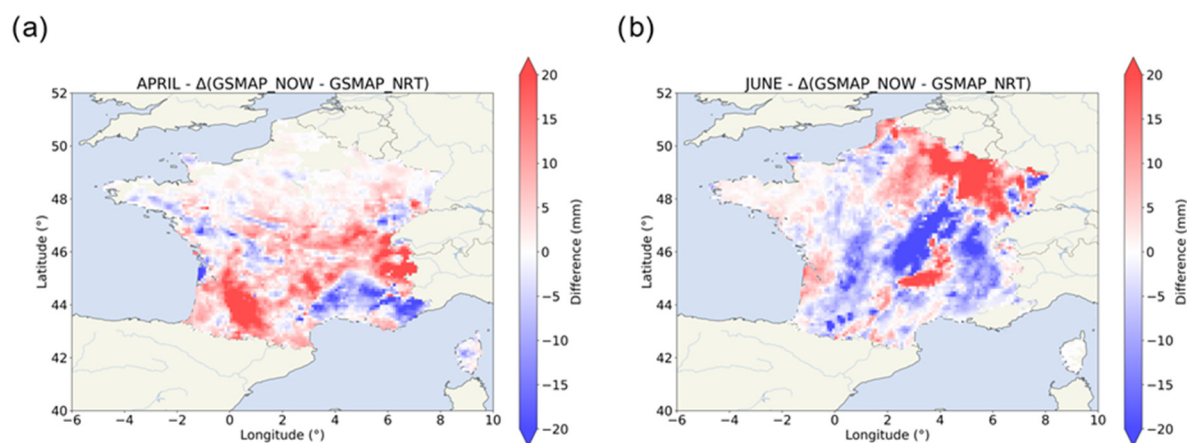
**Figure S2.** Accumulation difference between CMORPH-RT and CMORPH products for the April (a) and June (b) cases.



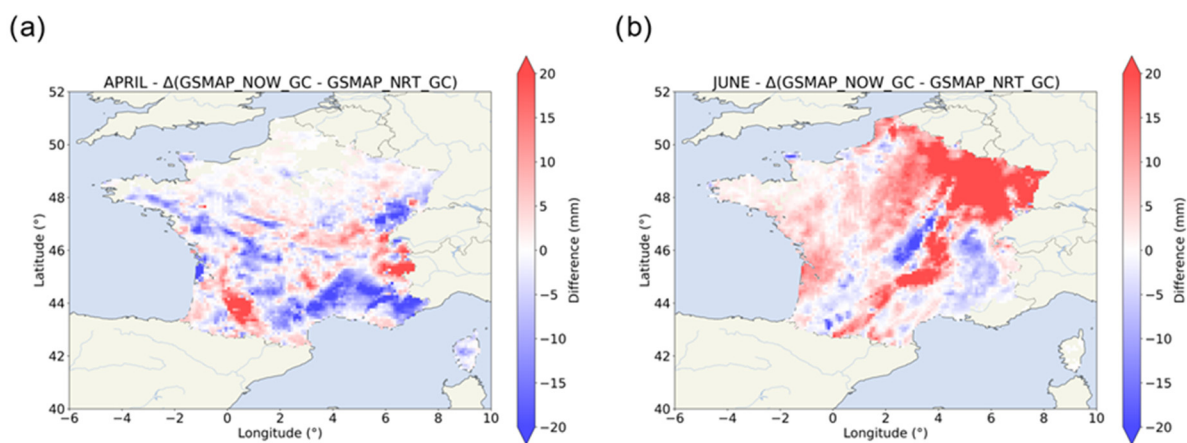
**Figure S3.** Accumulation difference between GSMaP-Now and GSMaP-Now-GC products for the April (a) and June (b) cases.



**Figure S4.** Accumulation difference between GSMaP-NRT and GSMaP-NRT-GC products for the April (a) and June (b) cases.



**Figure S5.** Accumulation difference between GSMaP-Now and GSMaP-NRT products for the April (a) and June (b) cases.



**Figure S6.** Accumulation difference between GSMaP-Now-GC and GSMaP-NRT-GC products for the April (a) and June (b) cases.